

Sliding Wing Wall, 6 Panels, Symmetrical

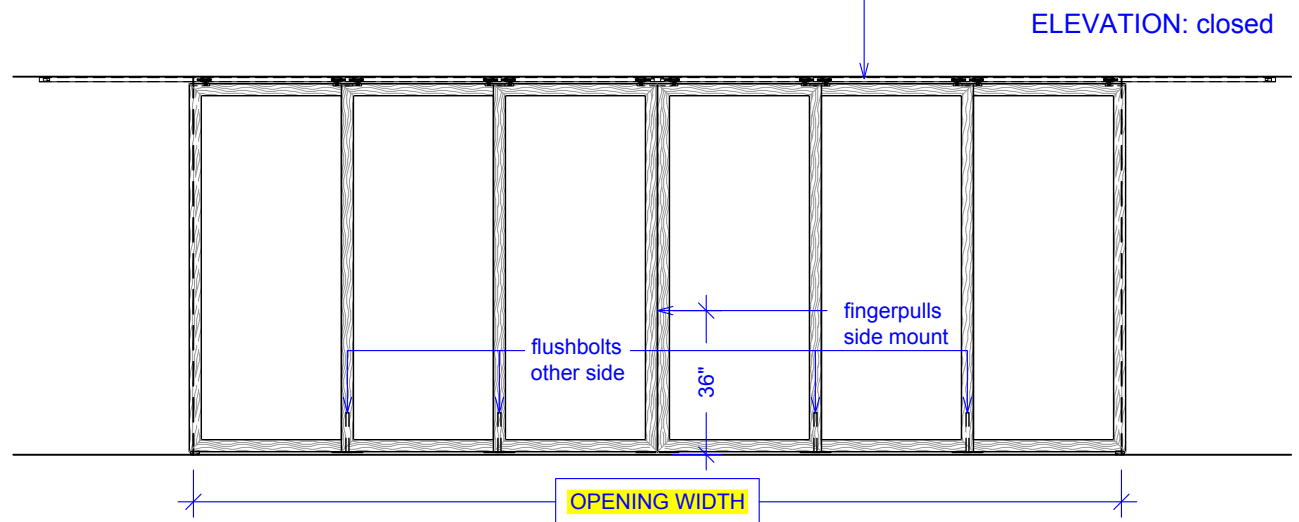
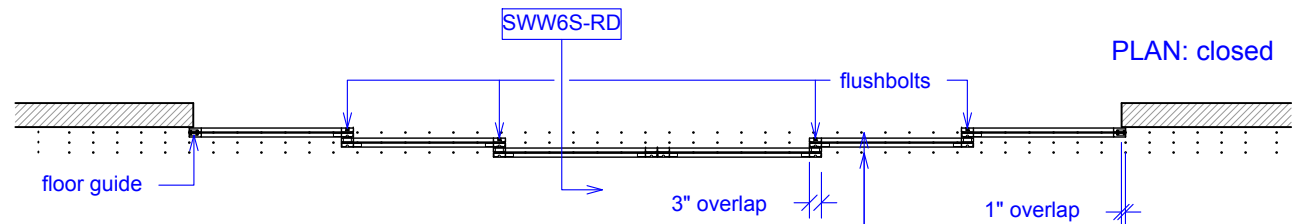
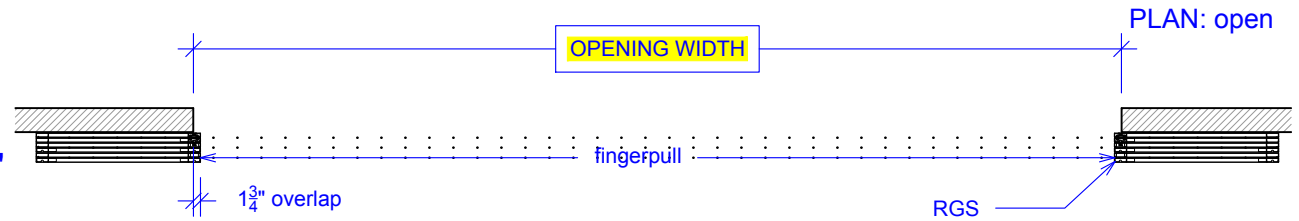
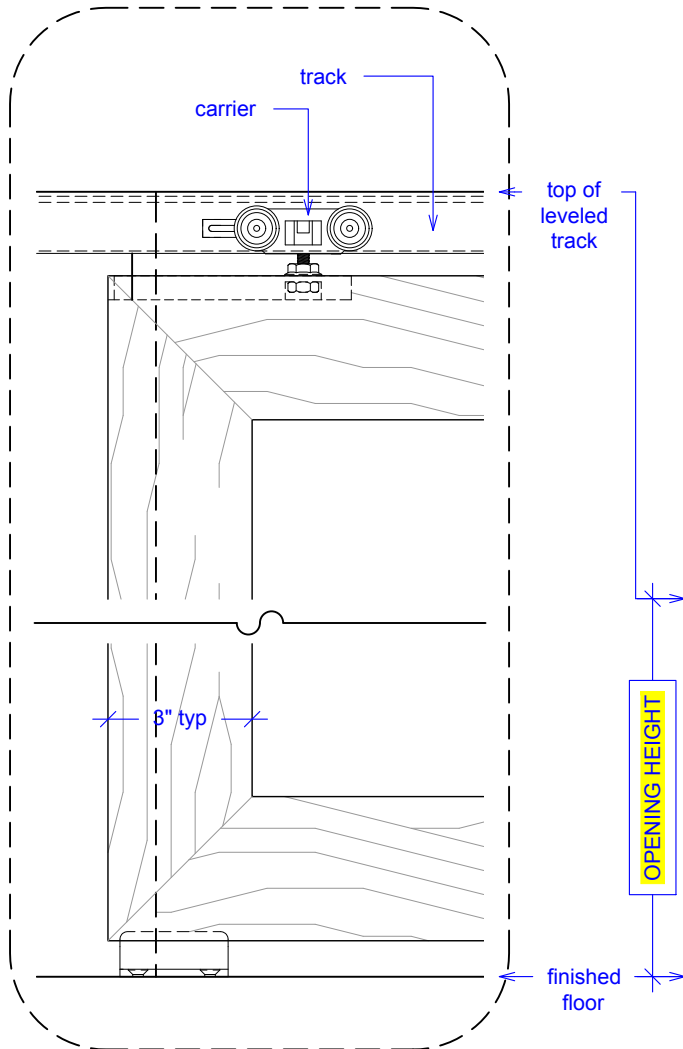
(SWW6S-RD)

ELEVATION

RAYDOOR STANDARD
SYSTEM DRAWINGS
©2020



YOUR OPENING HEIGHT = PANEL + 2 $\frac{1}{2}$ "
YOUR OPENING WIDTH = (6 x PANEL) - 14"

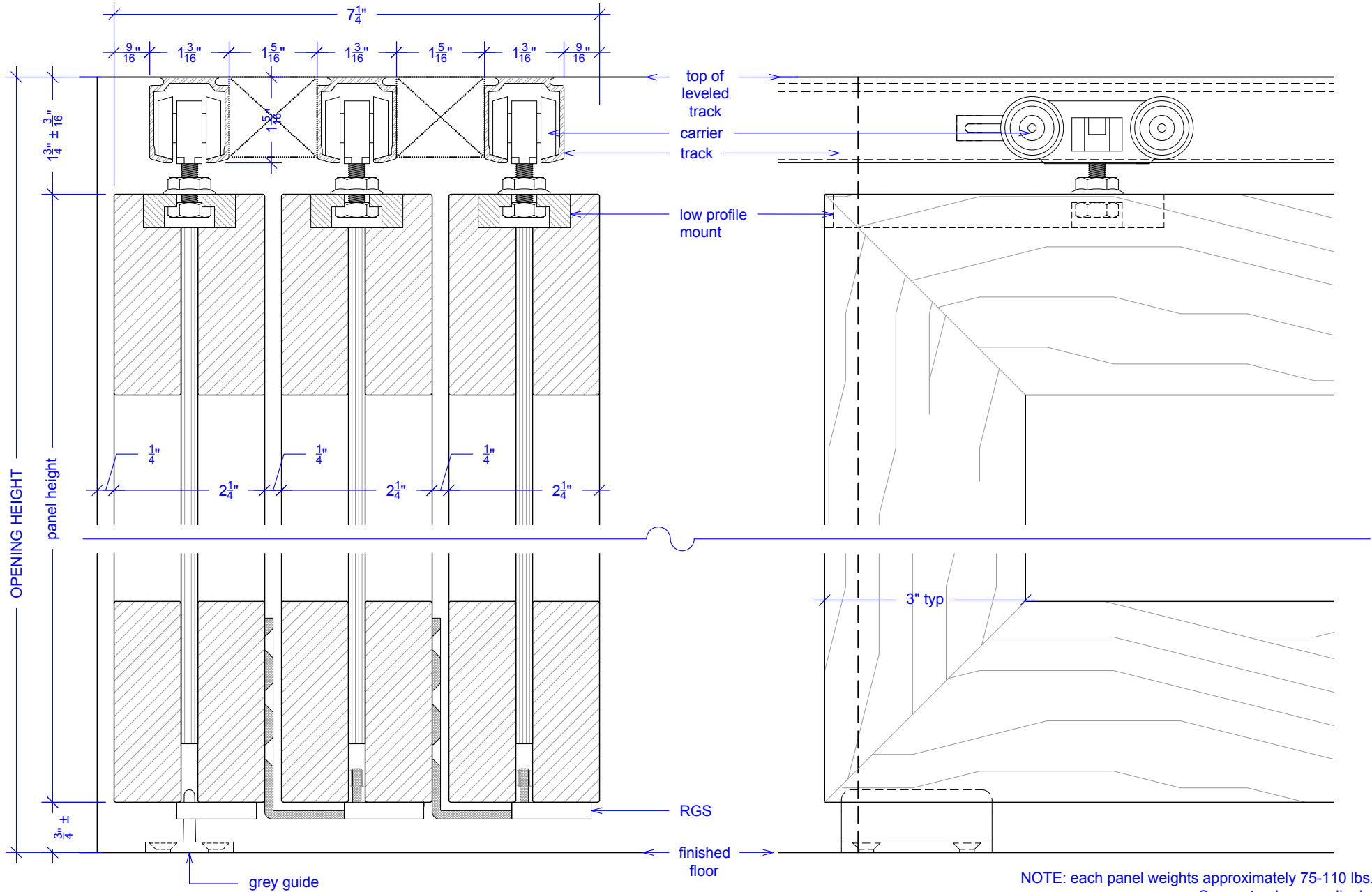


Sliding Wing Wall, 6 Panels, Symmetrical

(Sww6S-RD)

SECTION

RAYDOOR STANDARD
SYSTEM DRAWINGS
©2020

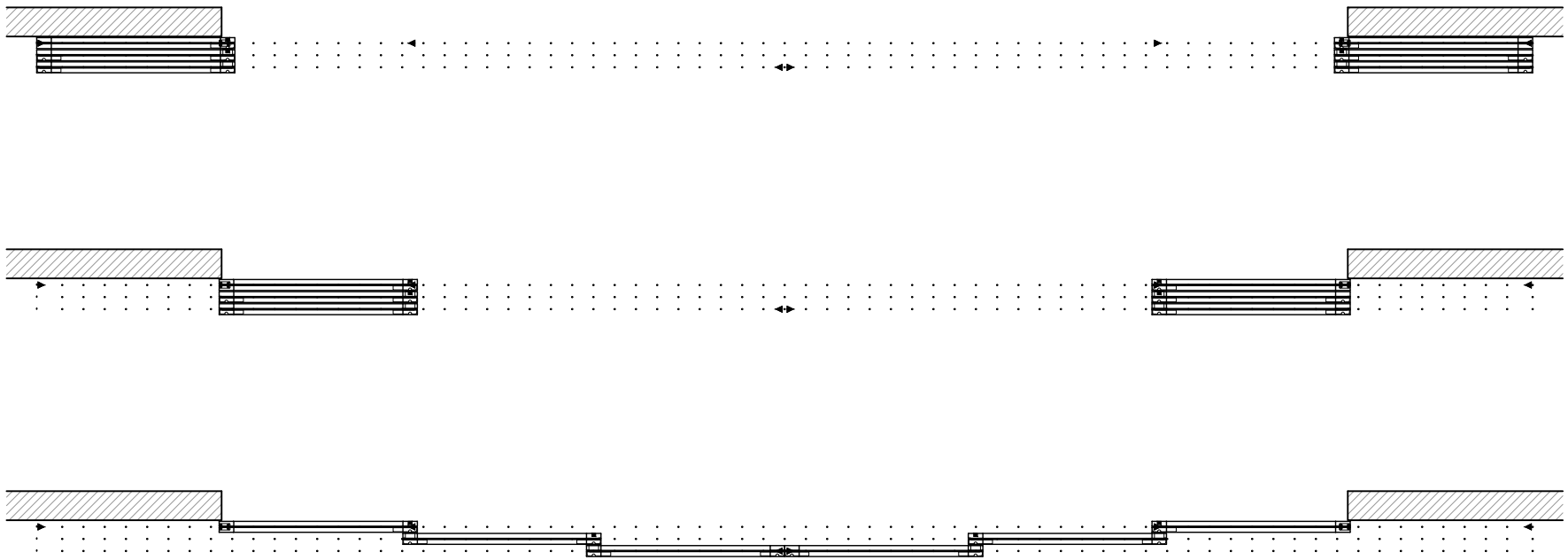


Sliding Wing Wall, 6 Panels, Symmetrical

(SWW6S-RD)

OPERATION OVERVIEW

RAYDOOR STANDARD
SYSTEM DRAWINGS
©2020



KEY:

- ▶ track stop
- RGS hook
- ┌ RGS stop
- flushbolt