

# Sliding Wing Wall w/ Soft-Close, 4 Panels, Symmetrical

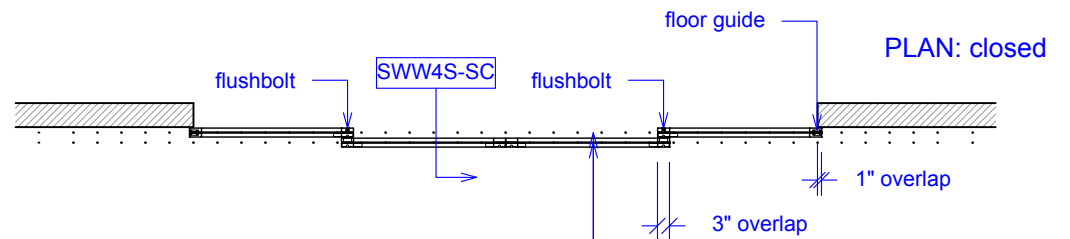
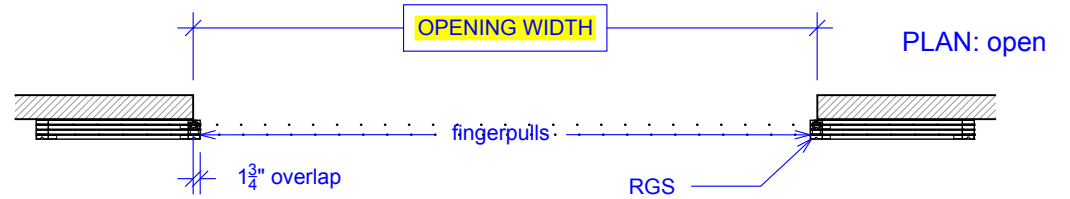
(SWW4S-SC)

ELEVATION

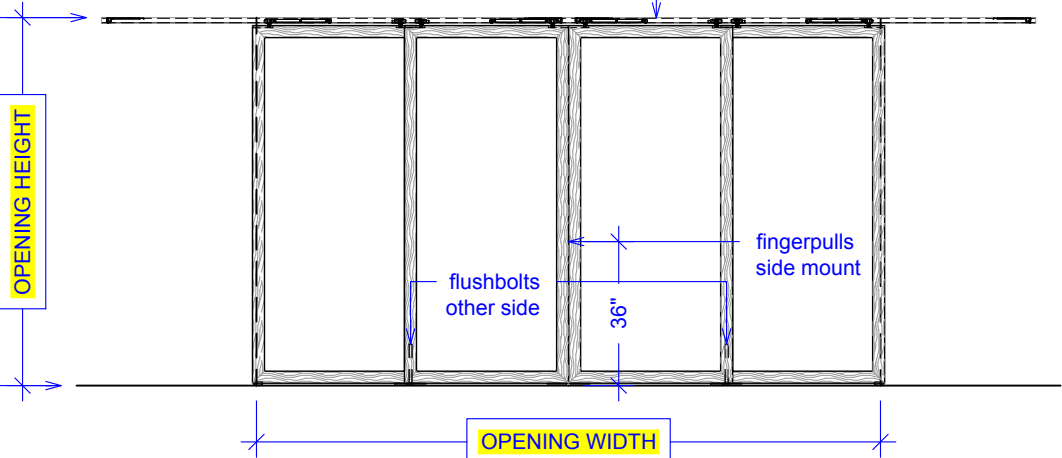
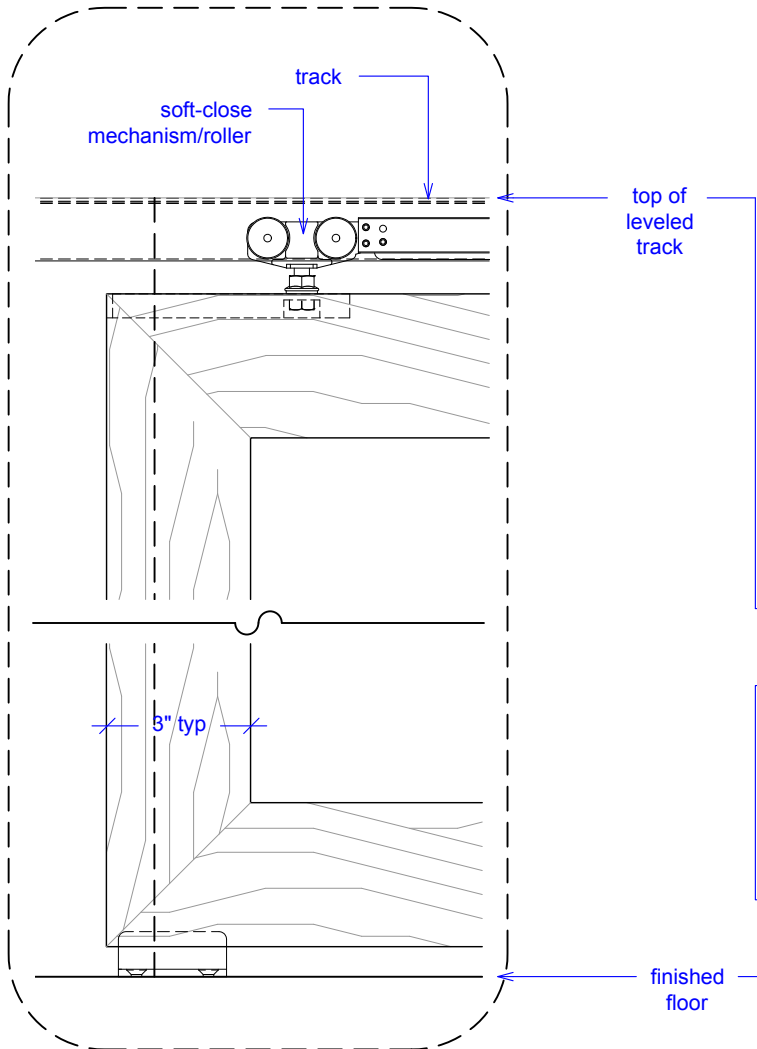
RAYDOOR STANDARD  
SYSTEM DRAWINGS  
©2020



YOUR OPENING HEIGHT = PANEL + 2<sup>5</sup>/<sub>8</sub>"  
YOUR OPENING WIDTH = (4 x PANEL) - 8"



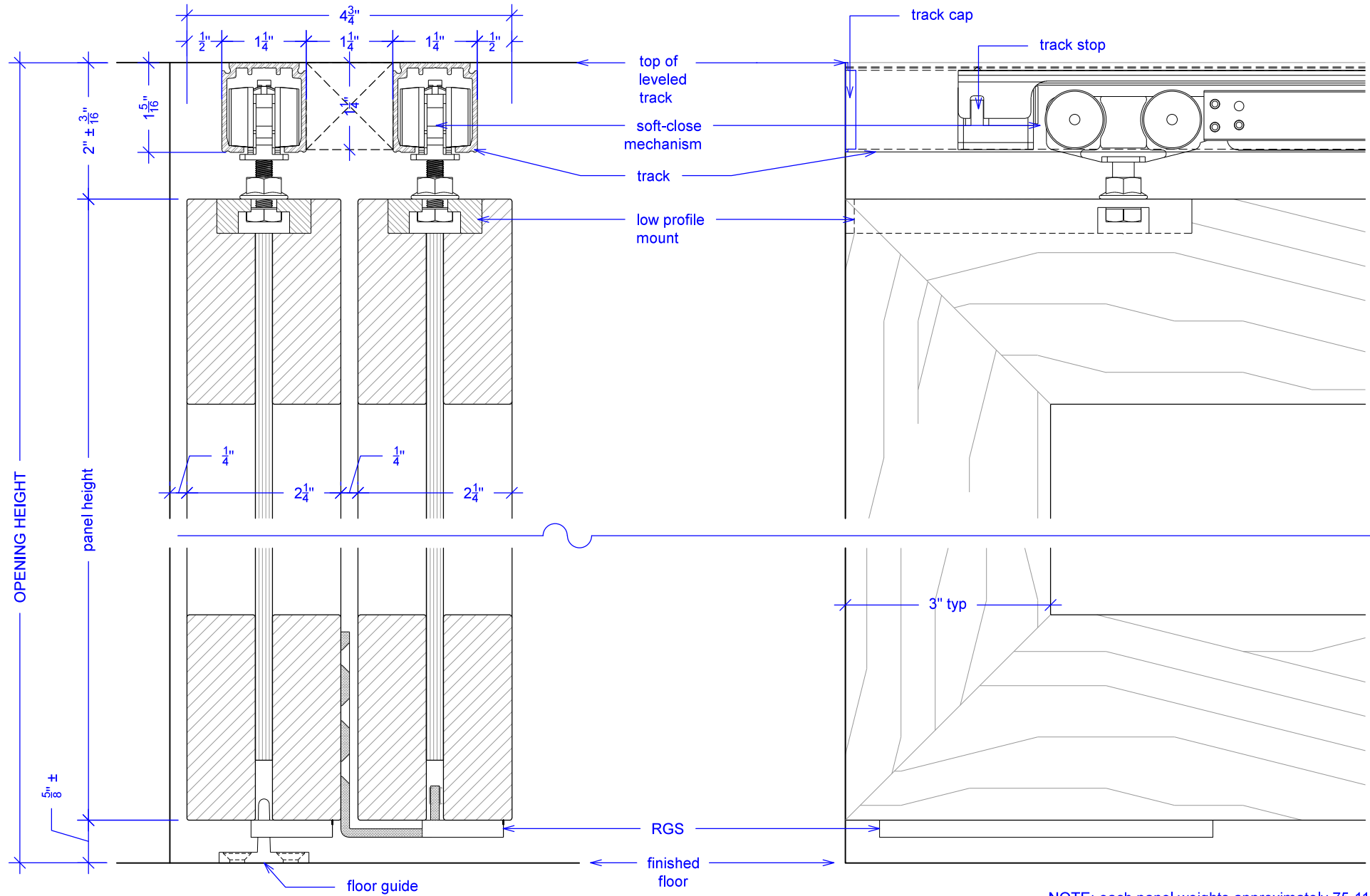
ELEVATION: closed



# Sliding Wing Wall w/ Soft-Close, 4 Panels, Symmetrical

(SWW4S-SC)  
SECTION

RAYDOOR STANDARD  
SYSTEM DRAWINGS  
©2020



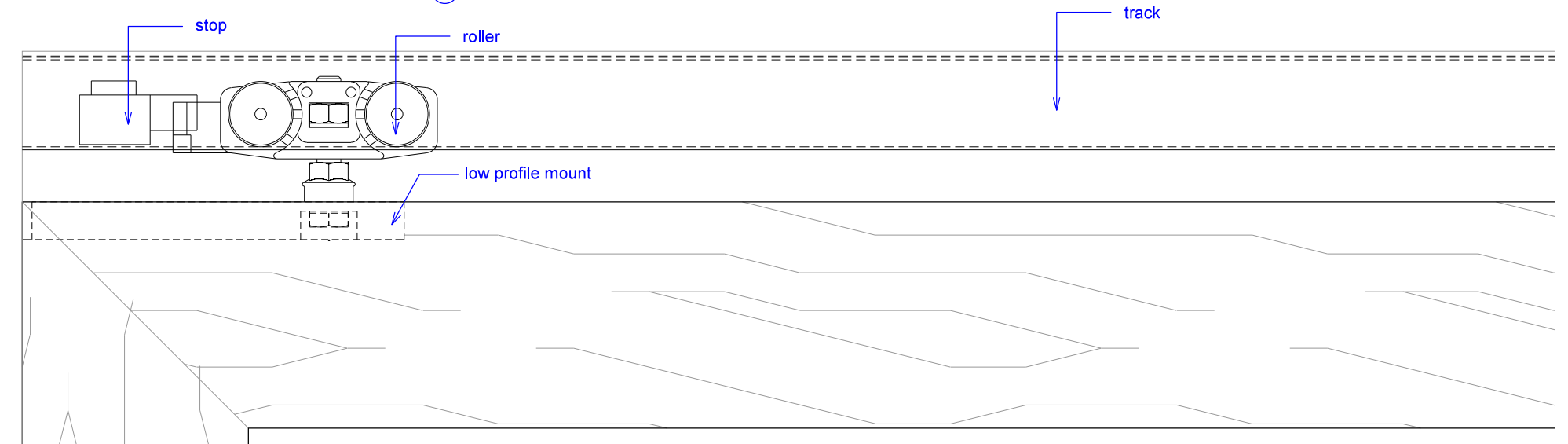
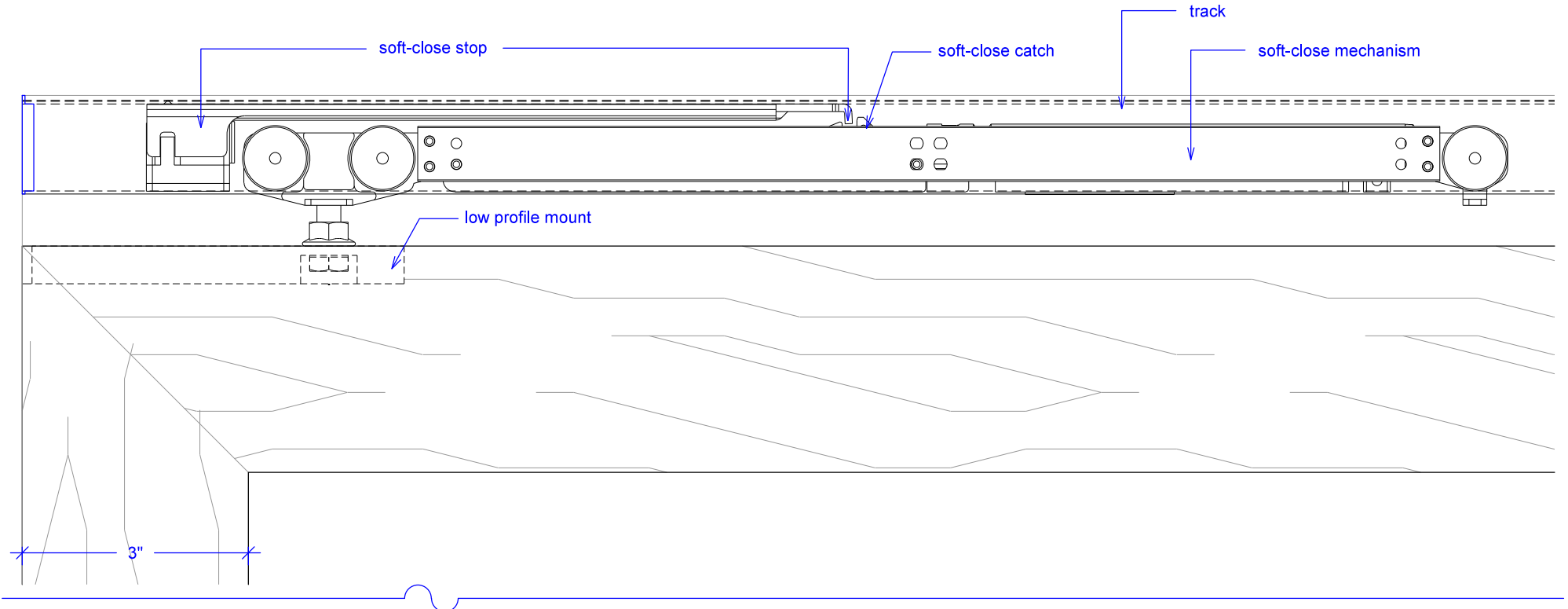
NOTE: each panel weights approximately 75-110 lbs.  
Secure tracks accordingly.

# Sliding Wing Wall w/ Soft-Close, 4 Panels, Symmetrical

(SWW4S-SC)

## SOFT-CLOSE HARDWARE

RAYDOOR STANDARD  
SYSTEM DRAWINGS  
©2020

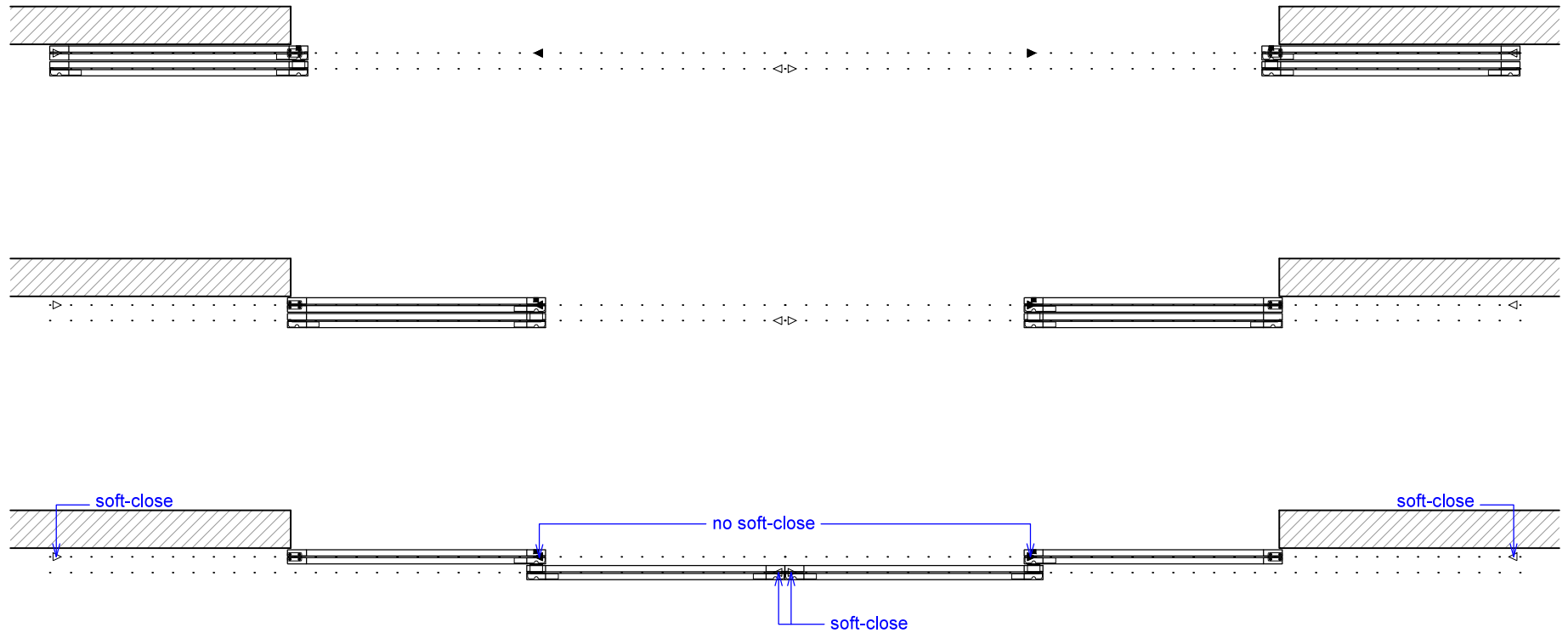


# Sliding Wing Wall w/ Soft-Close, 4 Panels, Symmetrical

(SWW4S-SC)

## OPERATION OVERVIEW

RAYDOOR STANDARD  
SYSTEM DRAWINGS  
©2020



**KEY:**

 floor guide	 stopper / release device	 track stop	 RGS hook	 RGS stop	 flushbolt
---	--	--	--	--	---