

# Sliding Wing Wall, 4 Panels, Symmetrical

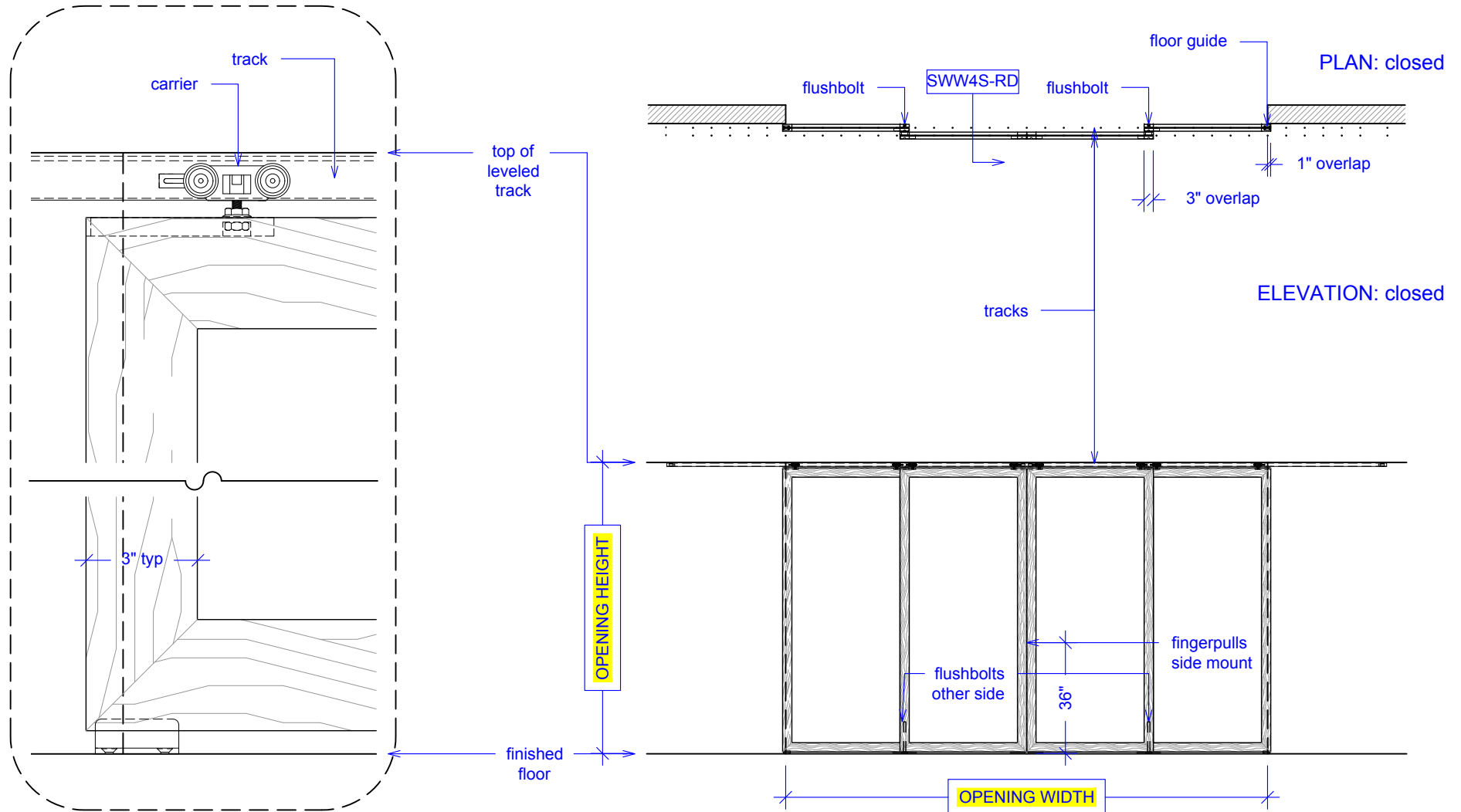
(Sww4S-RD)

ELEVATION

RAYDOOR STANDARD  
SYSTEM DRAWINGS  
©2020



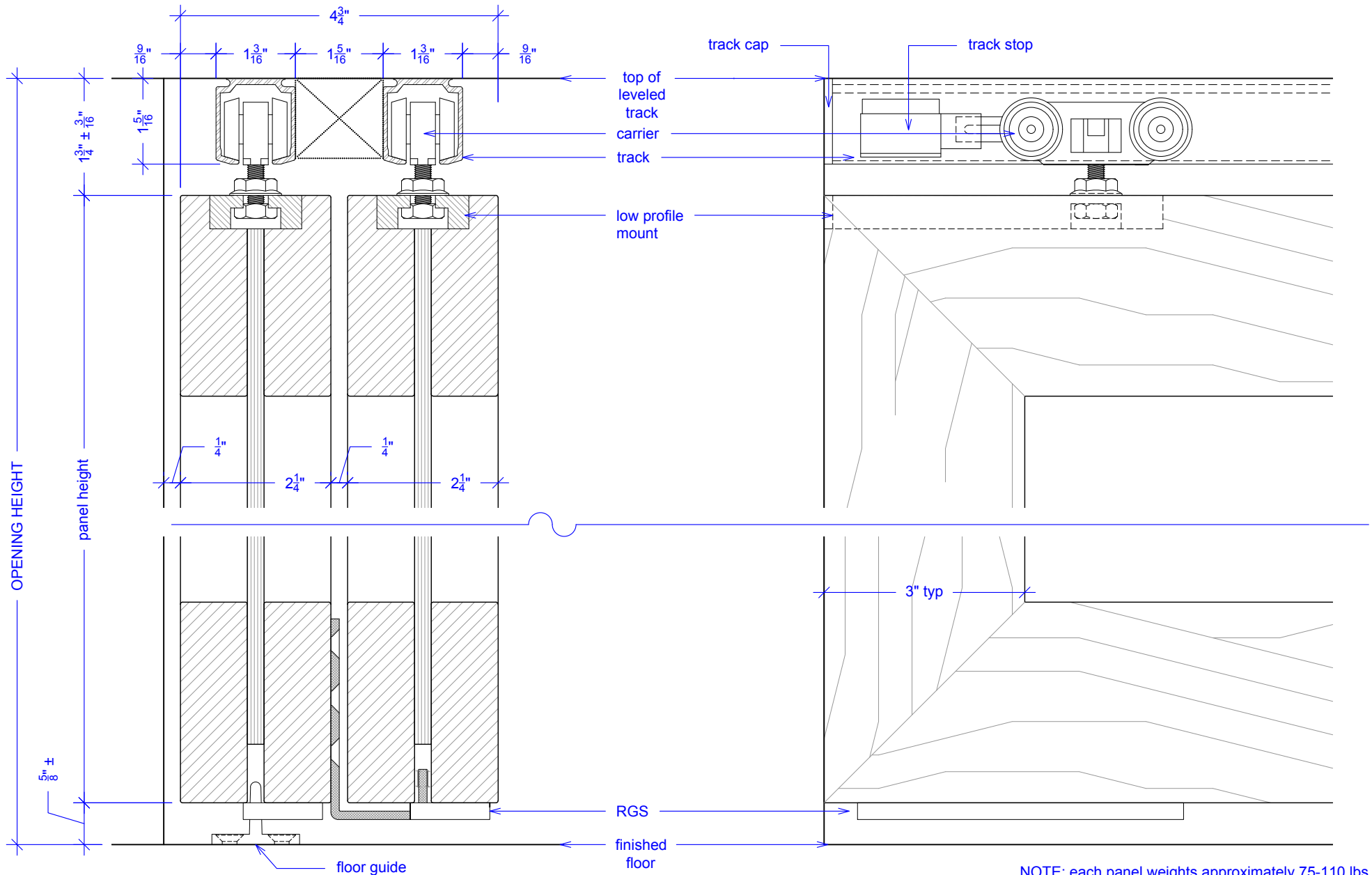
YOUR OPENING HEIGHT = PANEL + 2<sup>3</sup>/<sub>8</sub>"  
YOUR OPENING WIDTH = (4 x PANEL) - 8"



# Sliding Wing Wall, 4 Panels, Symmetrical

(SWW4S-RD)  
SECTION

RAYDOOR STANDARD  
SYSTEM DRAWINGS  
©2020



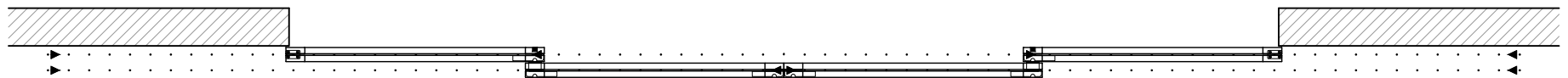
NOTE: each panel weights approximately 75-110 lbs.  
Secure tracks accordingly.

# Sliding Wing Wall, 4 Panels, Symmetrical

(SWW4S-RD)

## OPERATION OVERVIEW

RAYDOOR STANDARD  
SYSTEM DRAWINGS  
©2020



### KEY:

▶ track stop

□ RGS hook

┌ RGS stop

■ flushbolt