

# Sliding Wing Wall w/ Soft-Close, 3 Panels

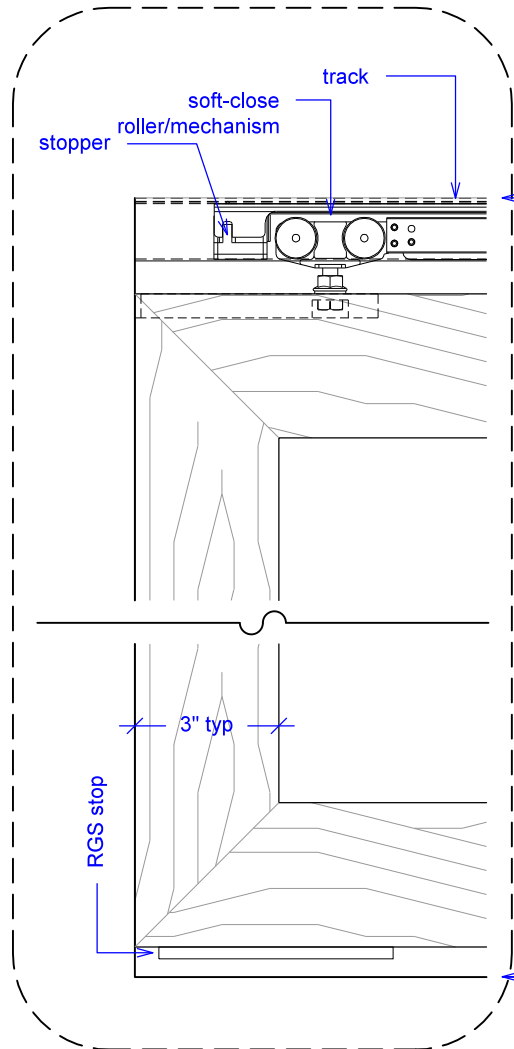
(Sww3-SC)

ELEVATION

RAYDOOR STANDARD  
SYSTEM DRAWINGS  
©2020



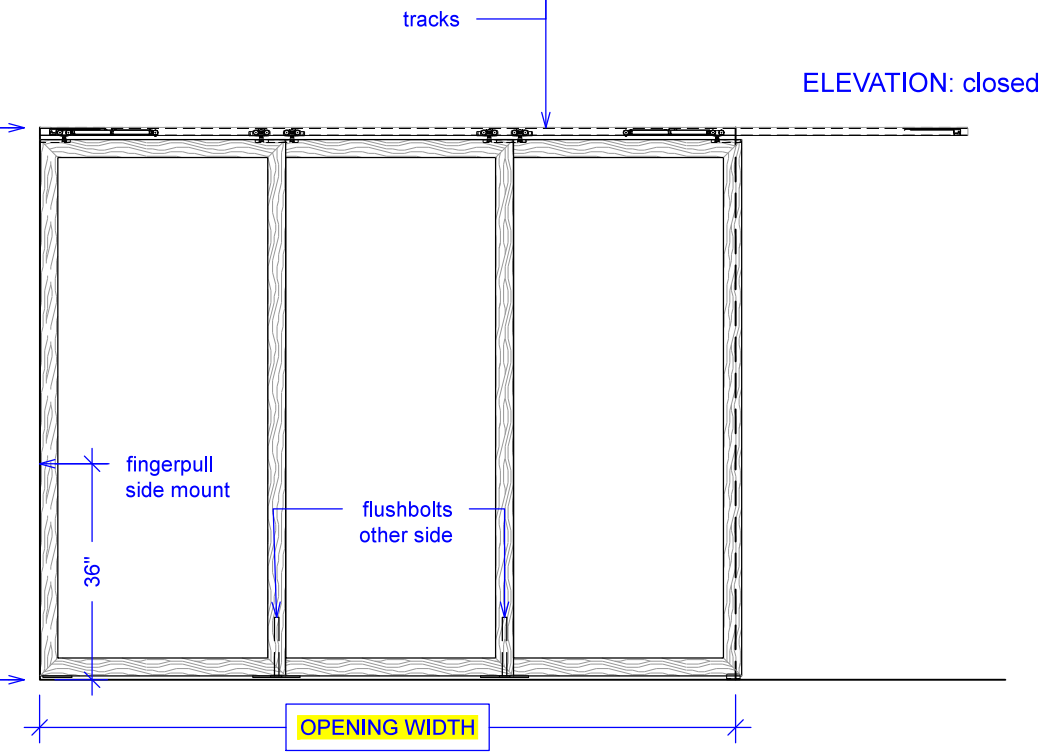
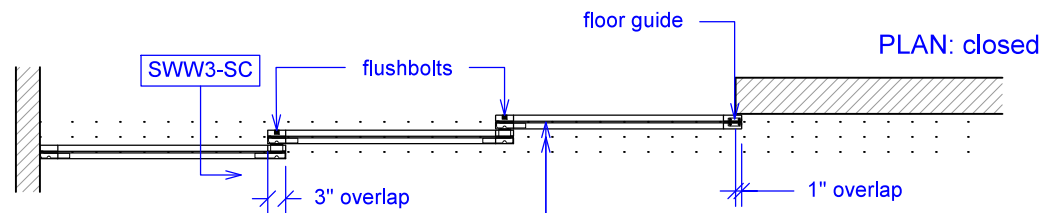
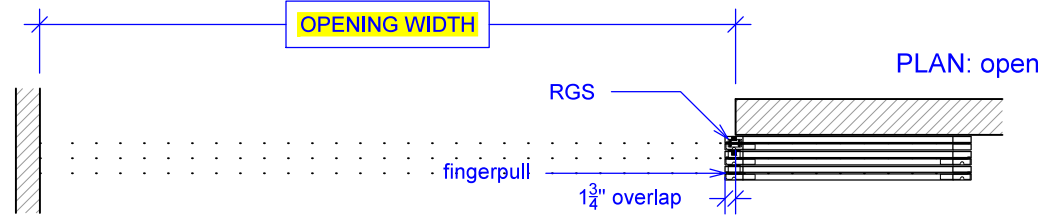
YOUR OPENING HEIGHT = PANEL + 2<sup>5</sup>/<sub>8</sub>"  
YOUR OPENING WIDTH = (3 x PANEL) - 7"



top of leveled track

finished floor

OPENING HEIGHT

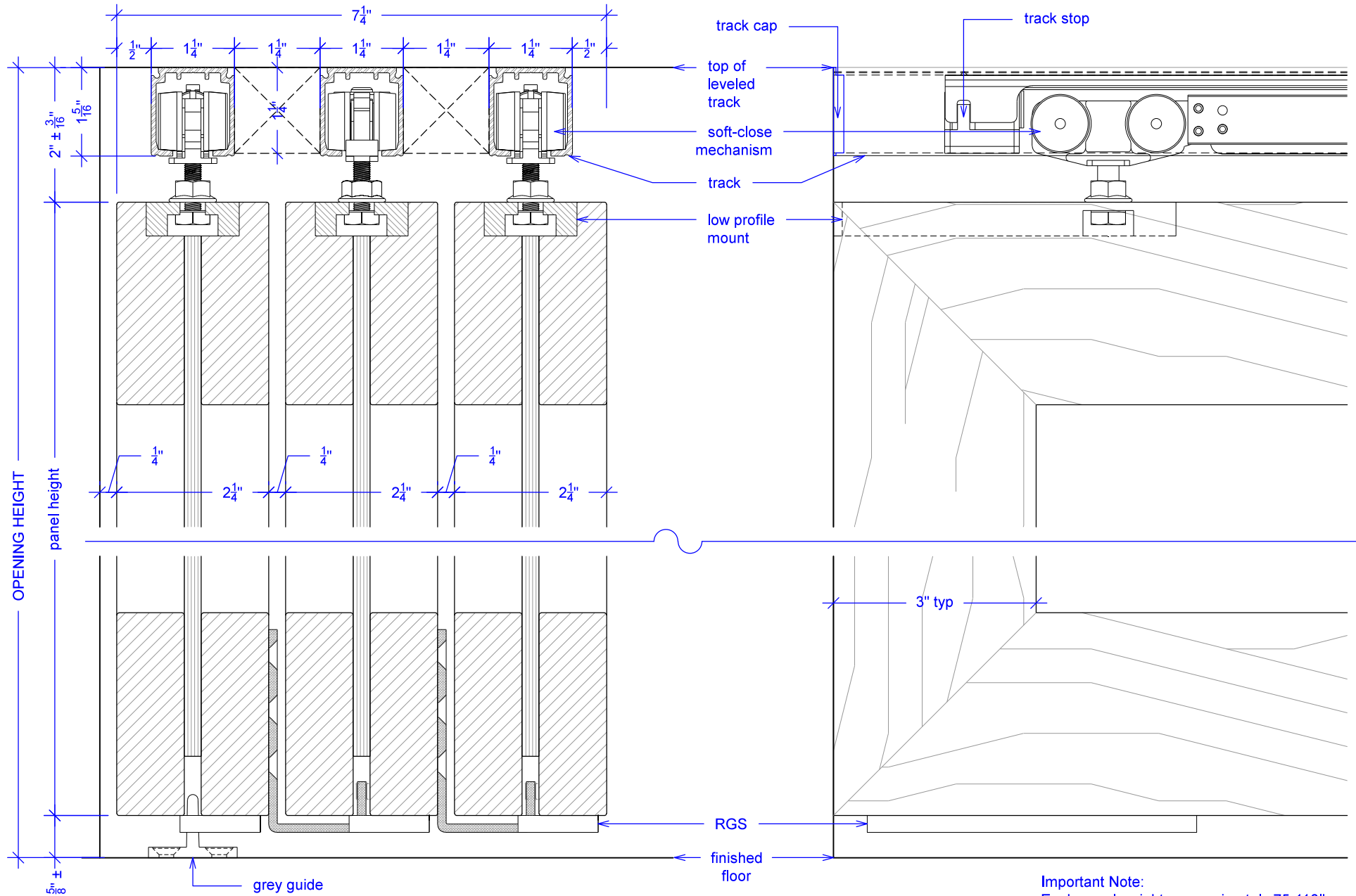


# Sliding Wing Wall w/ Soft-Close, 3 Panels

(Sww3-SC)

## SECTION

RAYDOOR STANDARD  
SYSTEM DRAWINGS  
©2020



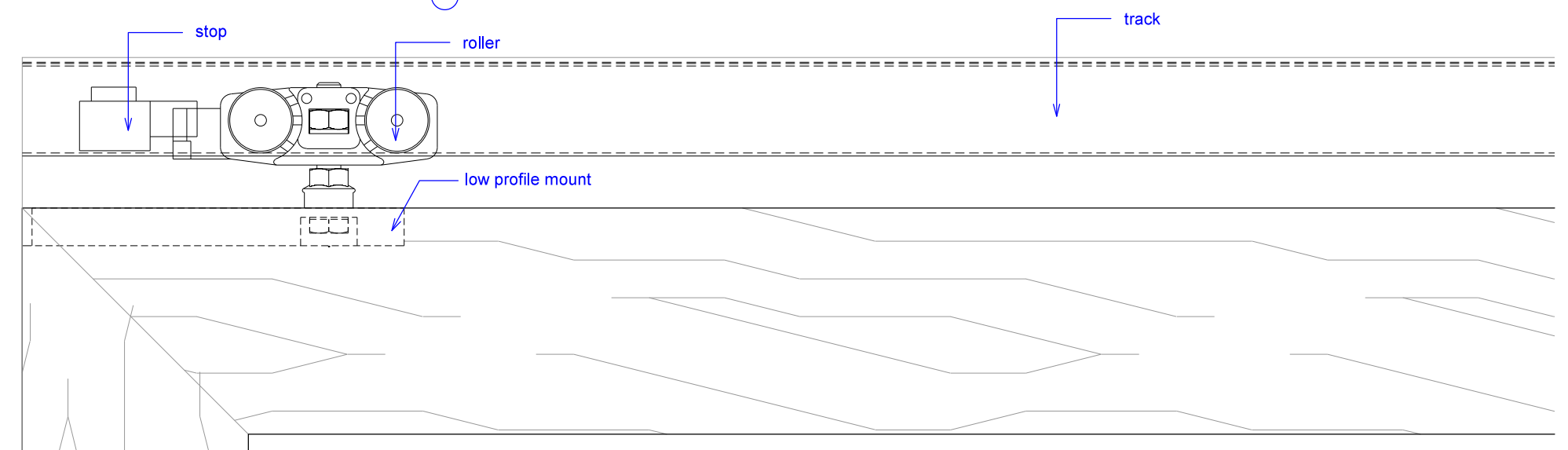
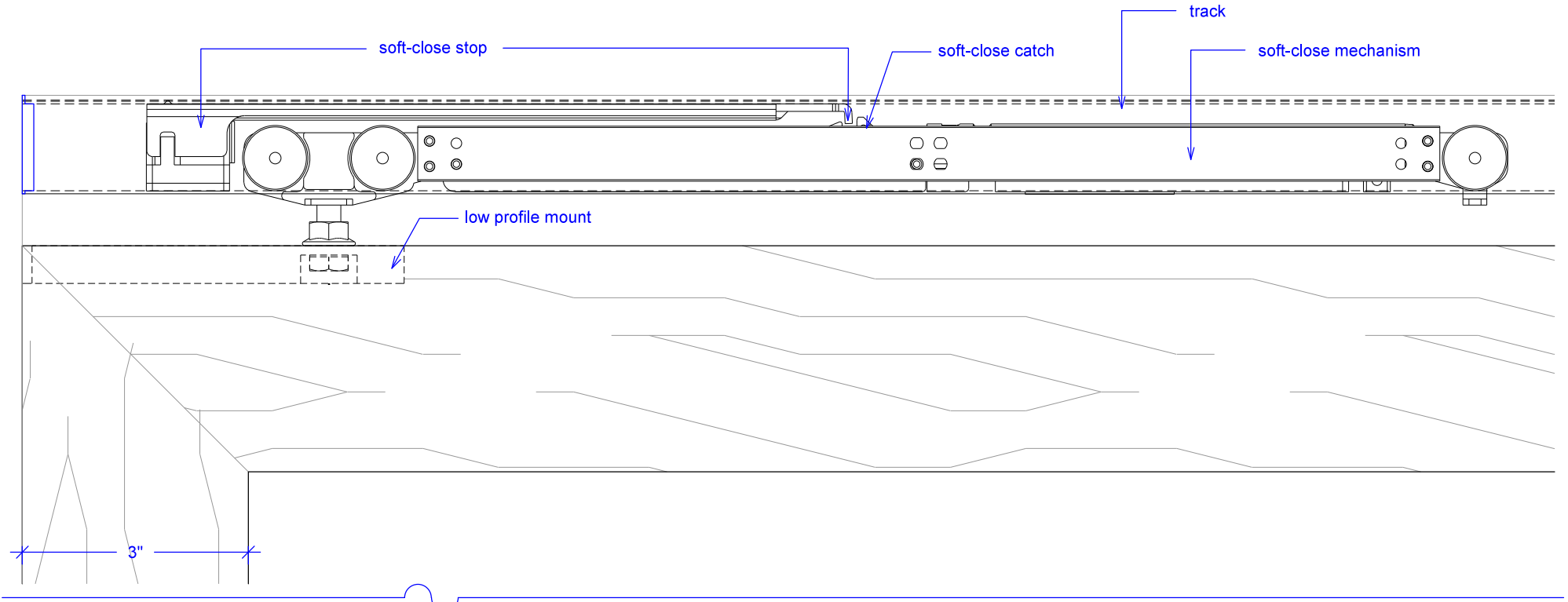
**Important Note:**  
Each panel weights approximately 75-110lbs.  
Secure tracks accordingly.

# Sliding Wing Wall w/ Soft-Close, 3 Panels

(SWW3-SC)

## SOFT-CLOSE HARDWARE

RAYDOOR STANDARD  
SYSTEM DRAWINGS  
©2020

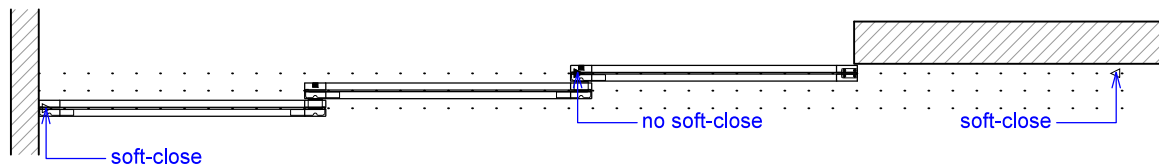
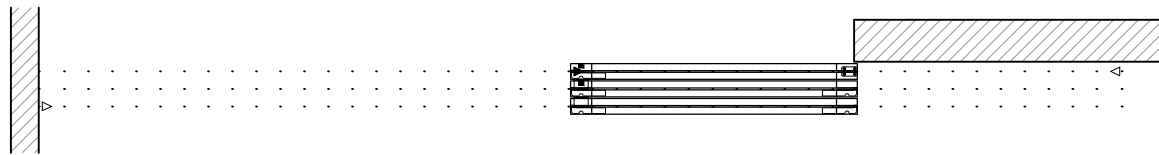
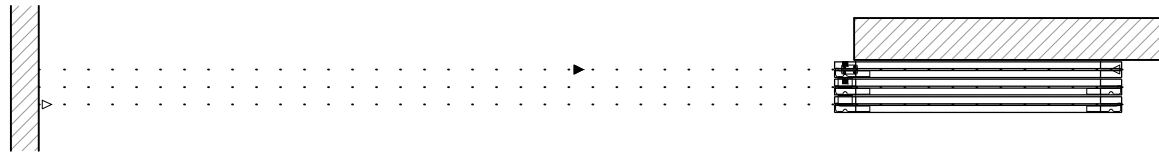


# Sliding Wing Wall w/ Soft-Close, 3 Panels




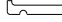

(Sww3-SC)

## OPERATION OVERVIEW

RAYDOOR STANDARD  
SYSTEM DRAWINGS  
©2020



**KEY:**

-  stopper / release device
-  track stop
-  RGS hook
-  RGS stop
-  flushbolt