

Sliding Wing Wall, 3 Panels

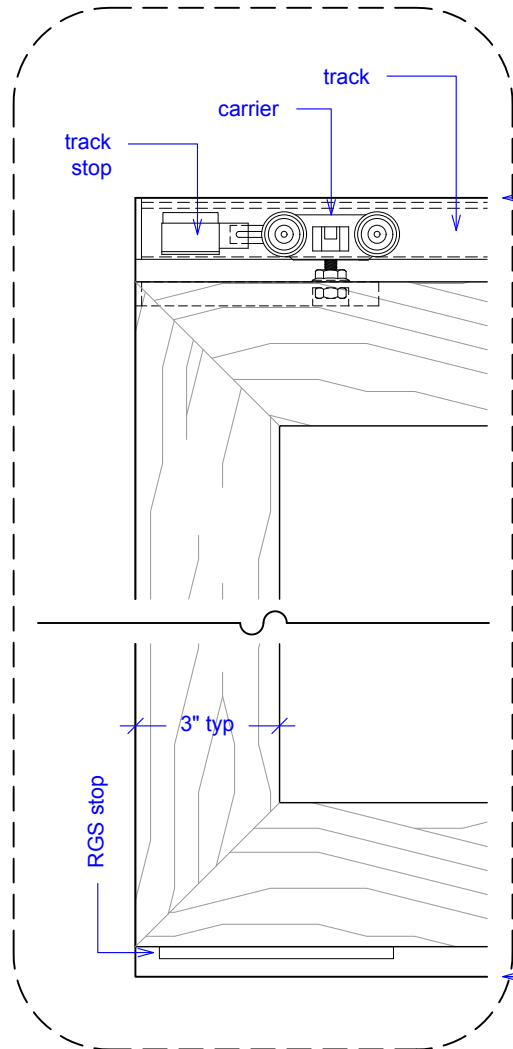
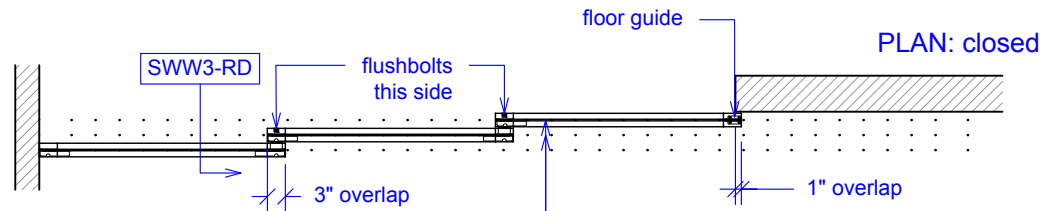
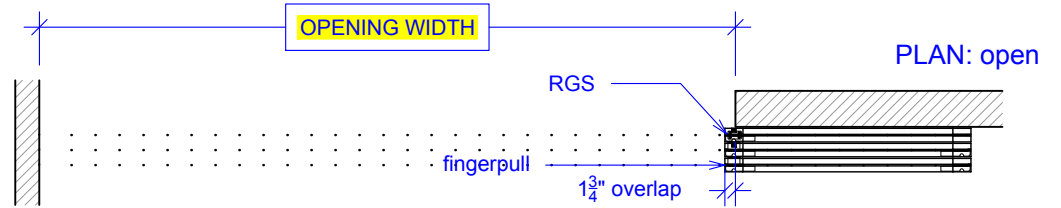
(SWW3-RD)

ELEVATION

RAYDOOR STANDARD
SYSTEM DRAWINGS
©2022



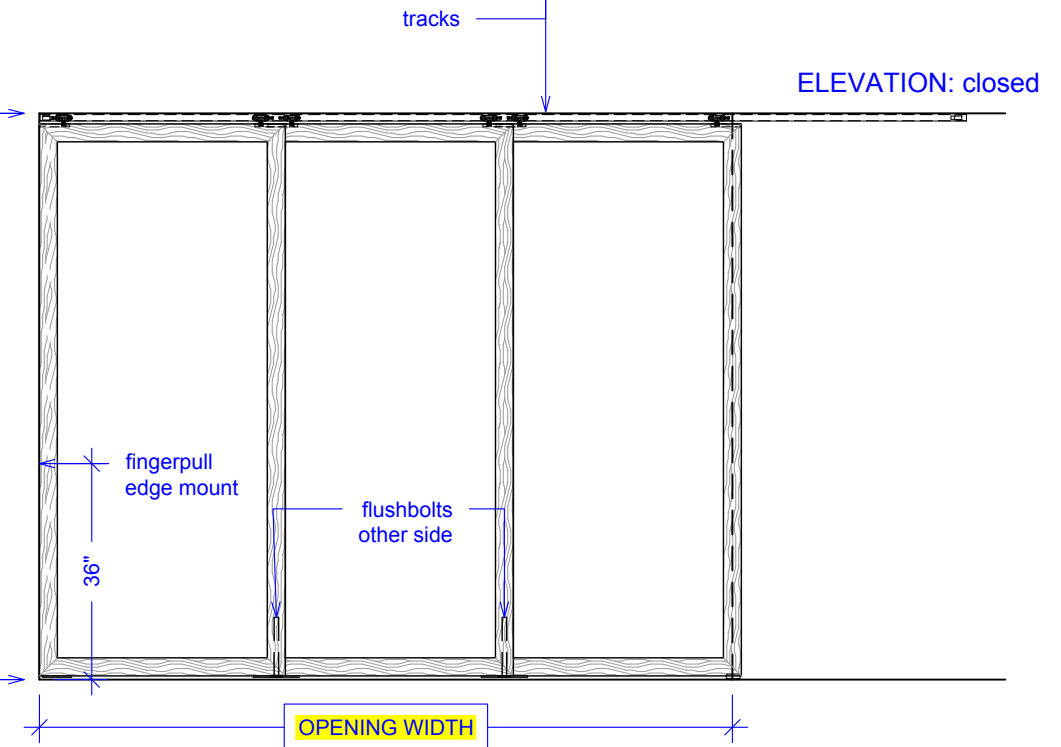
YOUR OPENING HEIGHT = PANEL + 2³/₈"
YOUR OPENING WIDTH = (3 x PANEL) - 7"



top of leveled track

OPENING HEIGHT

finished floor



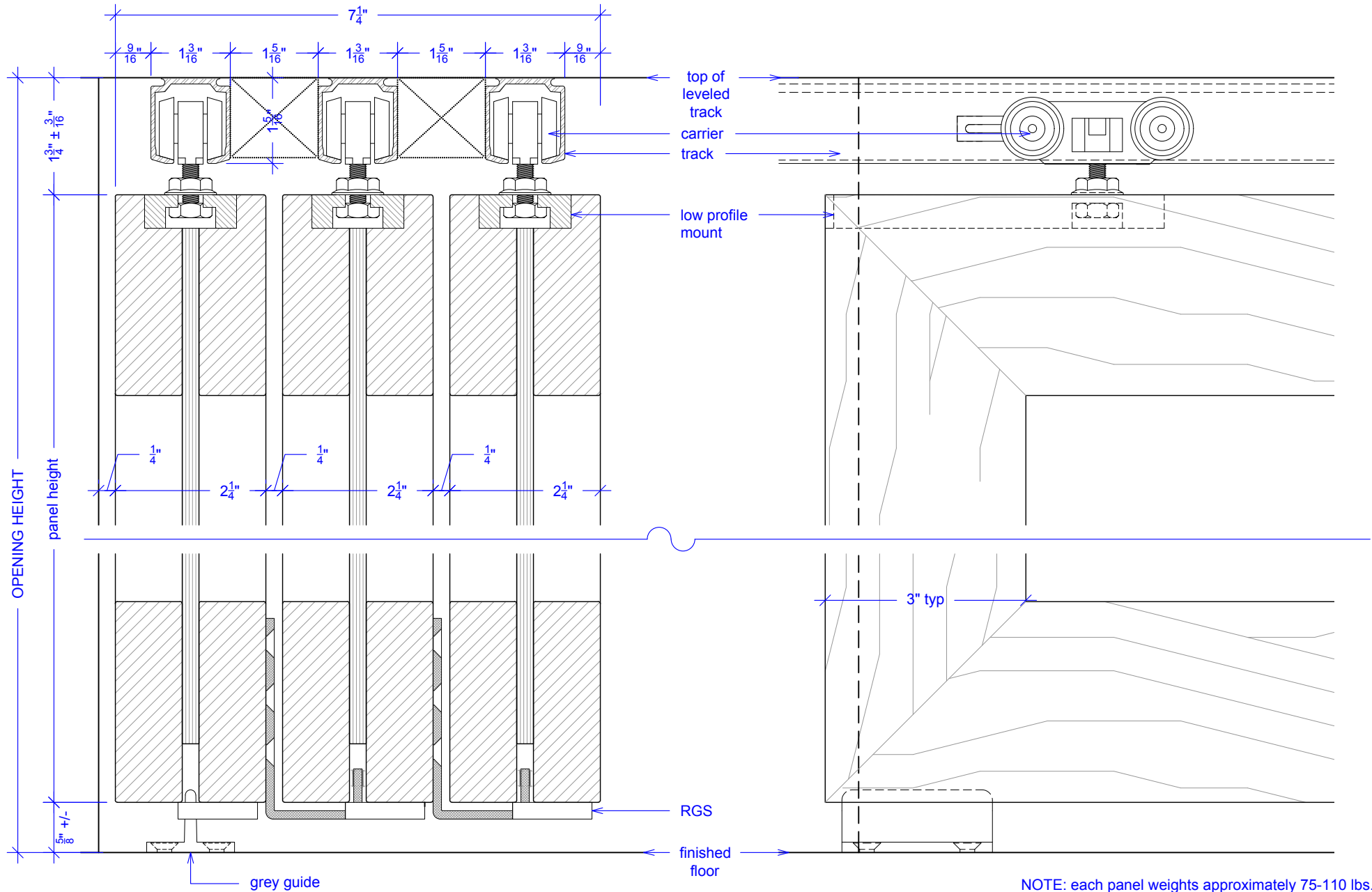
OPENING WIDTH

Sliding Wing Wall, 3 Panels

(SWW3-RD)

SECTION

RAYDOOR STANDARD
SYSTEM DRAWINGS
©2022



Sliding Wing Wall, 3 Panels

(SWW3-RD)

OPERATION OVERVIEW

RAYDOOR STANDARD
SYSTEM DRAWINGS
©2022

