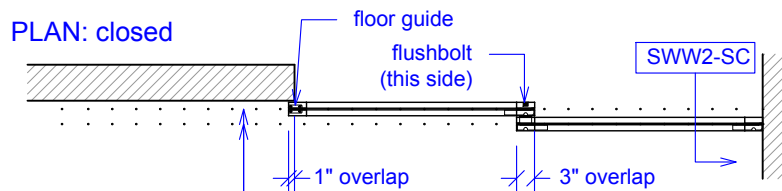
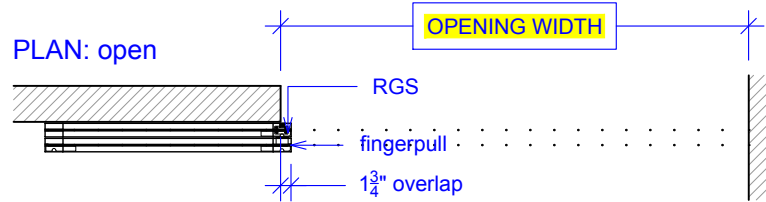


# Sliding Wing Wall w/ Soft-Close, 2 Panels

(SWW2-SC)

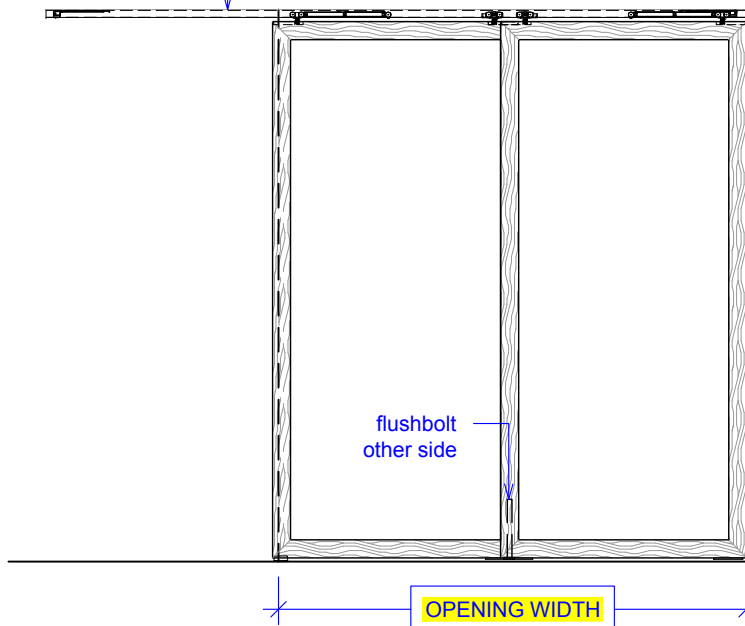
ELEVATION

RAYDOOR STANDARD  
SYSTEM DRAWINGS  
©2020

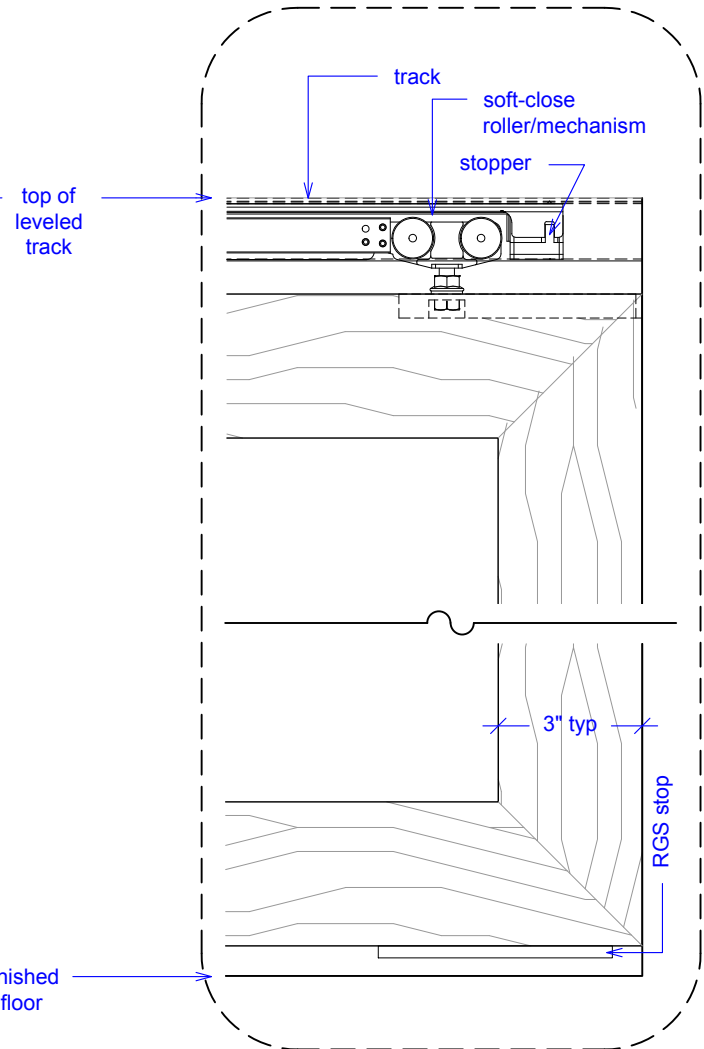


tracks

ELEVATION: closed



YOUR OPENING HEIGHT = PANEL + 2 5/8"  
YOUR OPENING WIDTH = (2 x PANEL) - 4"

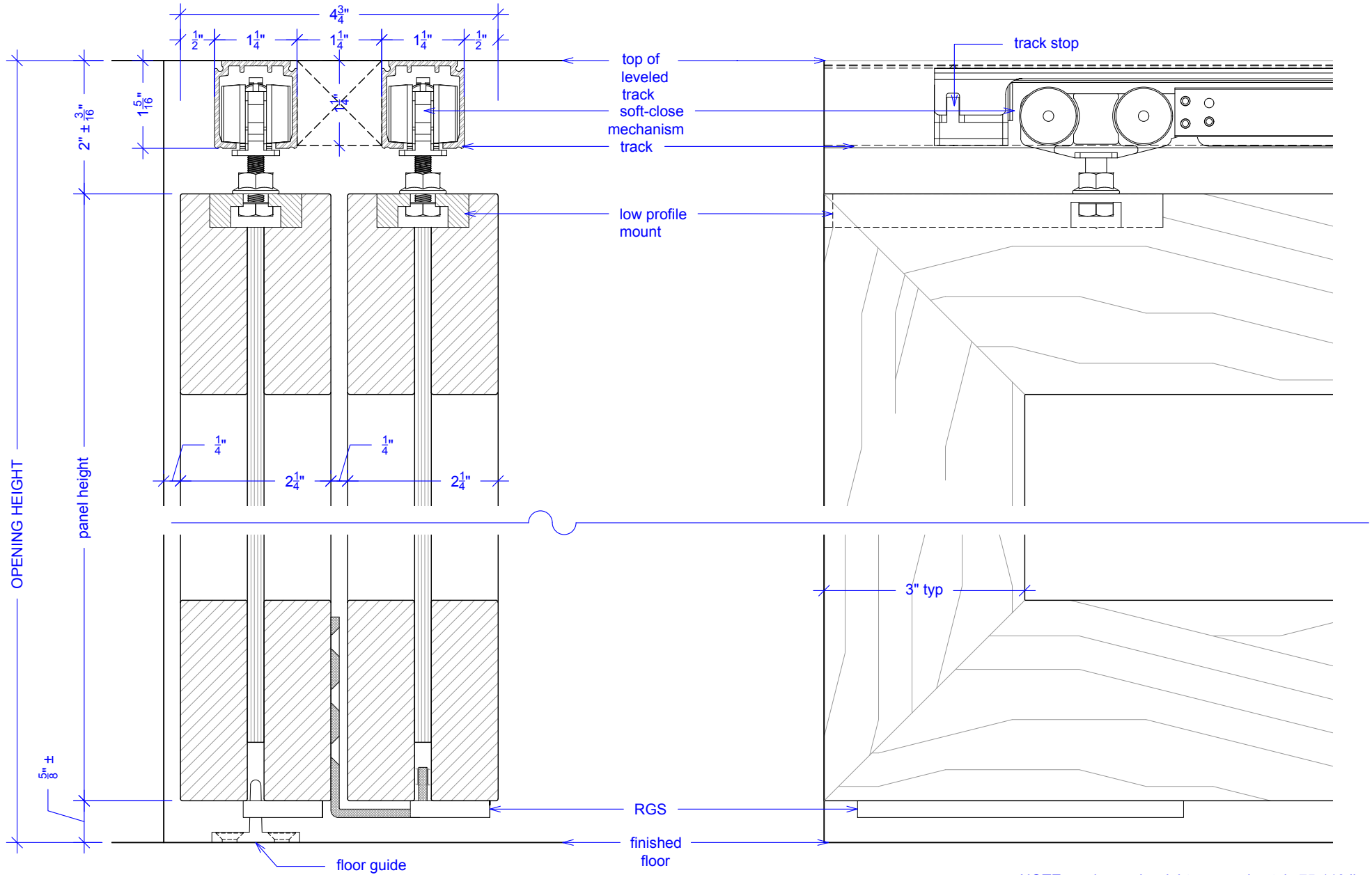


finished floor

# Sliding Wing Wall w/ Soft-Close, 2 Panels

(Sww2-SC)  
SECTION

RAYDOOR STANDARD  
SYSTEM DRAWINGS  
©2020



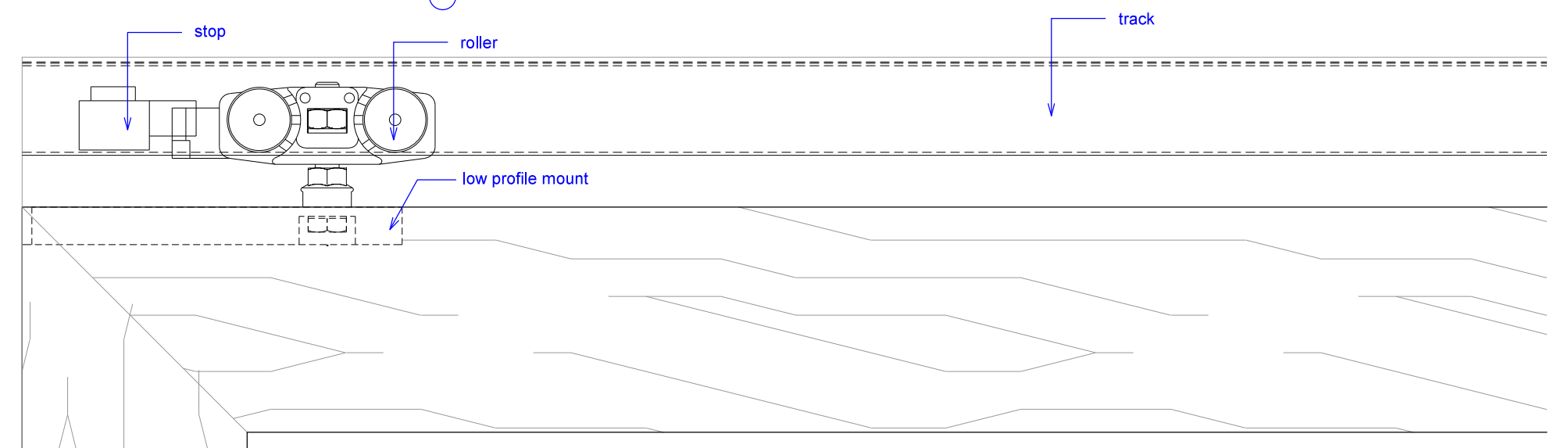
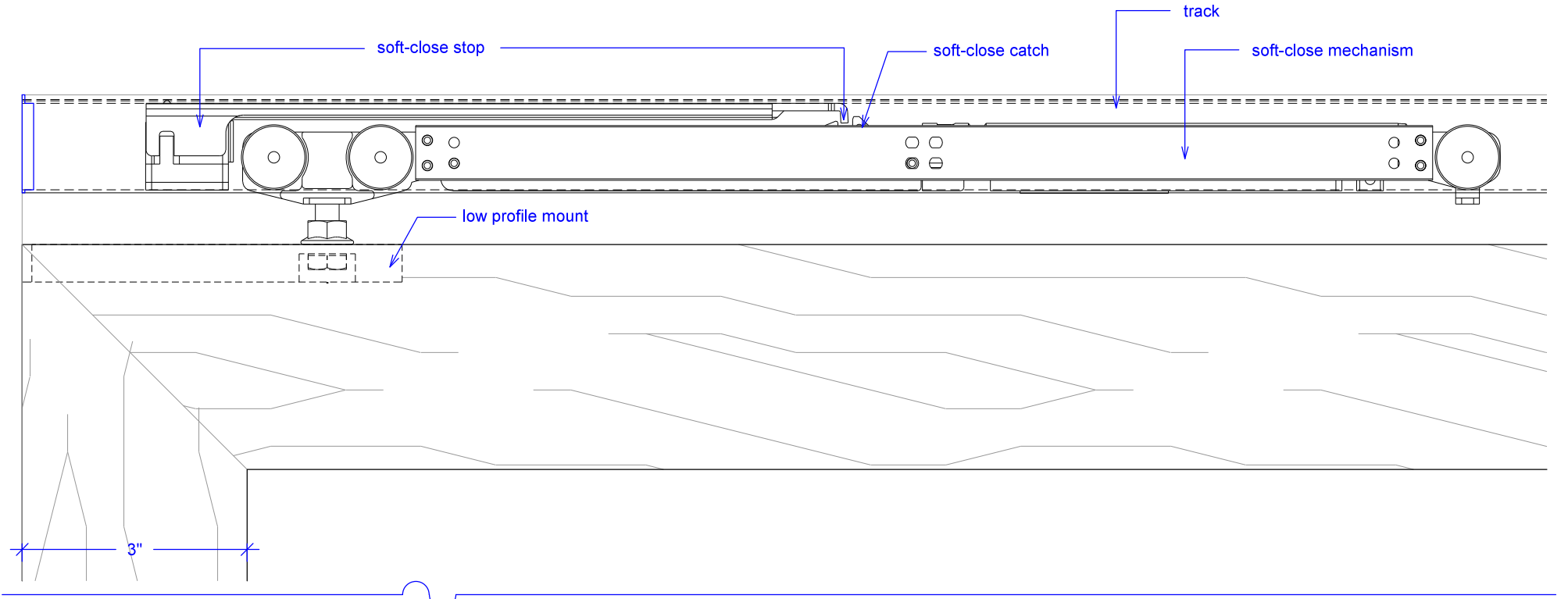
NOTE: each panel weights approximately 75-110 lbs.  
Secure tracks accordingly.

# Sliding Wing Wall w/ Soft-Close, 2 Panels

(SWW2-SC)

## SOFT-CLOSE HARDWARE

RAYDOOR STANDARD  
SYSTEM DRAWINGS  
©2020

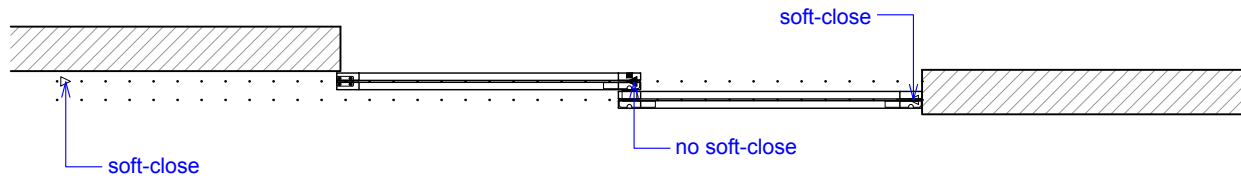


# Sliding Wing Wall w/ Soft-Close, 2 Panels

(SWW2-SC)

## OPERATION OVERVIEW

RAYDOOR STANDARD  
SYSTEM DRAWINGS  
©2020



### KEY:

▷ stopper / release device

▶ track stop

 floor guide

 RGS hook

 RGS stop

■ flushbolt