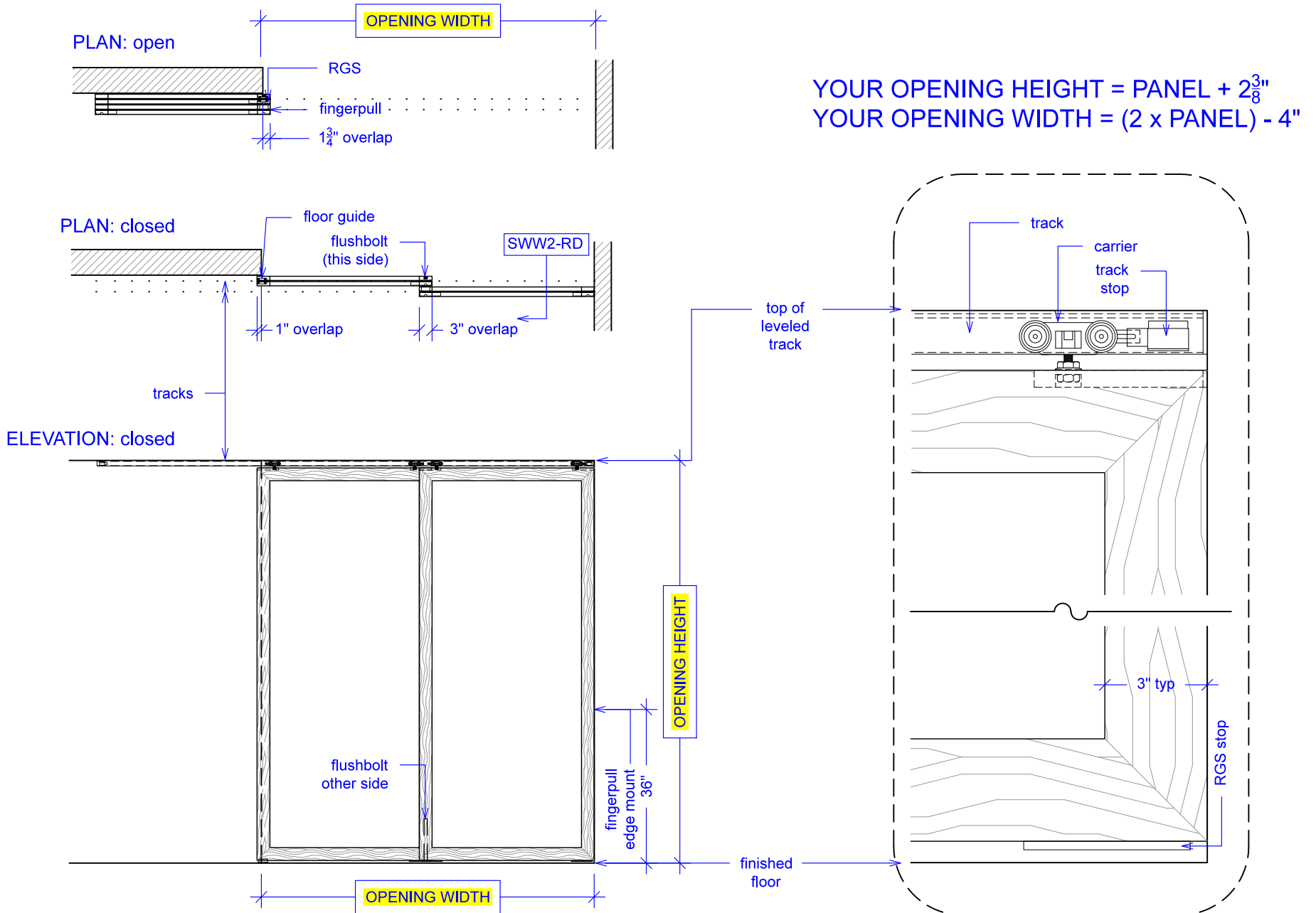


# Sliding Wing Wall, 2 Panels

(SWW2-RD)

## ELEVATION

RAYDOOR STANDARD  
SYSTEM DRAWINGS  
©2020

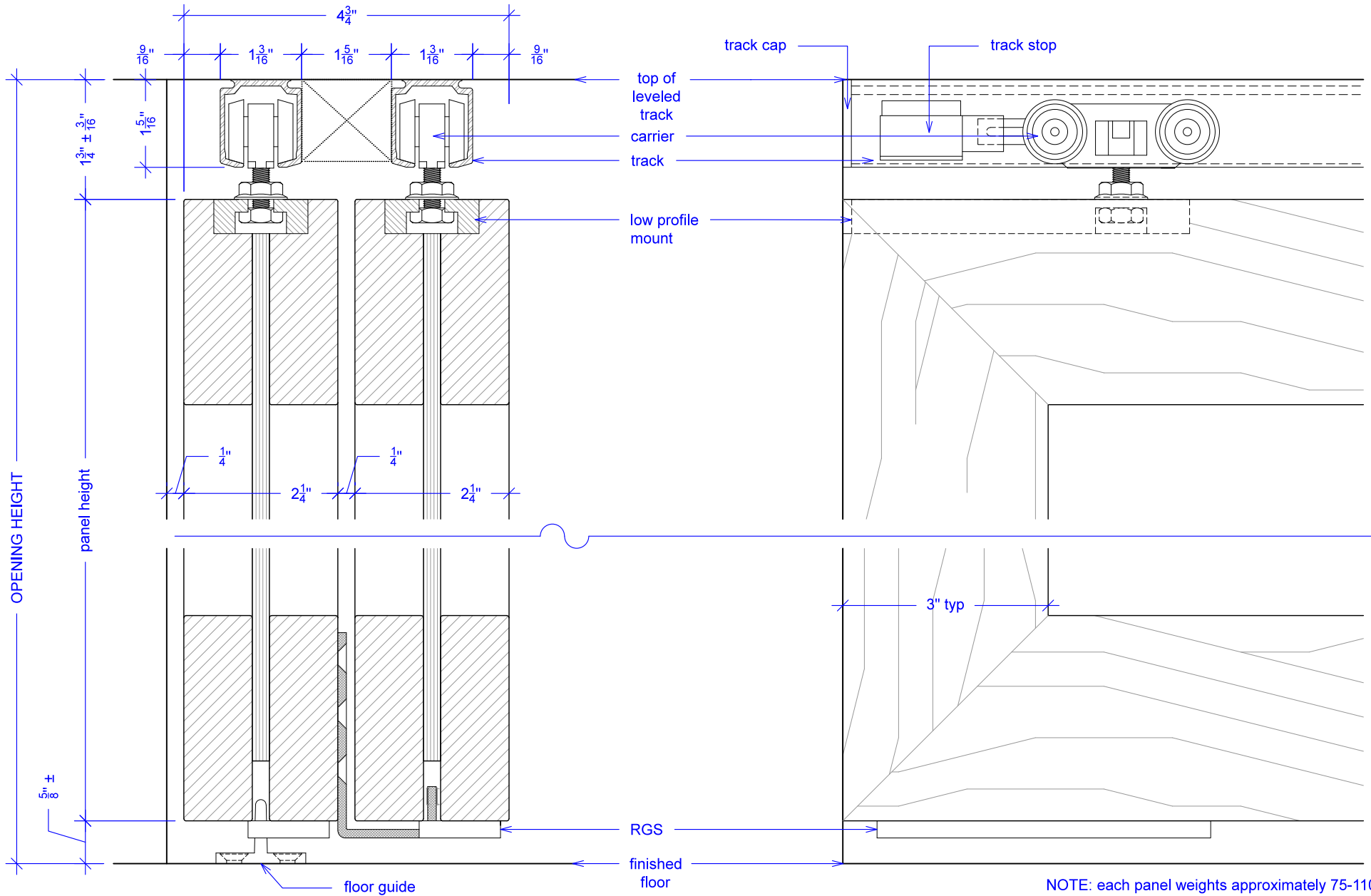


# Sliding Wing Wall, 2 Panels

(SWW2-RD)

SECTION

RAYDOOR STANDARD  
SYSTEM DRAWINGS  
©2020



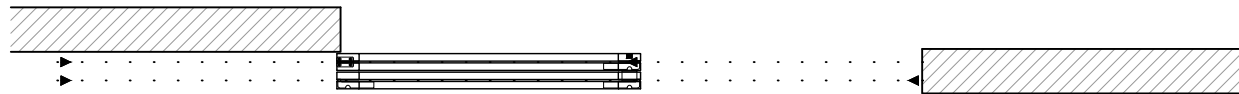
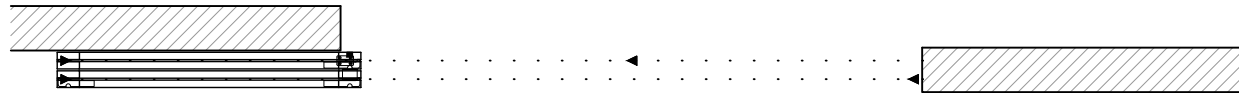
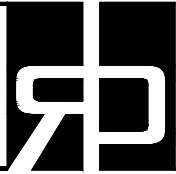
NOTE: each panel weights approximately 75-110 lbs.  
Secure tracks accordingly.

# Sliding Wing Wall, 2 Panels

(SWW2-RD)

## OPERATION OVERVIEW

RAYDOOR STANDARD  
SYSTEM DRAWINGS  
©2020



### KEY:

▶ track stop

□ RGS hook

⌋ RGS stop

■ flushbolt