

# Sliding Wall w/ Soft-Close, 6 Panels, Symmetrical

(SW6S-SC)

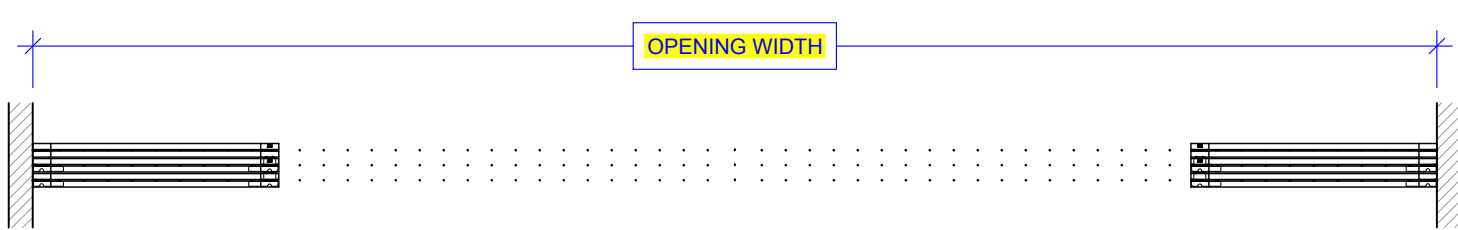
ELEVATION

RAYDOOR STANDARD  
SYSTEM DRAWINGS  
©2020

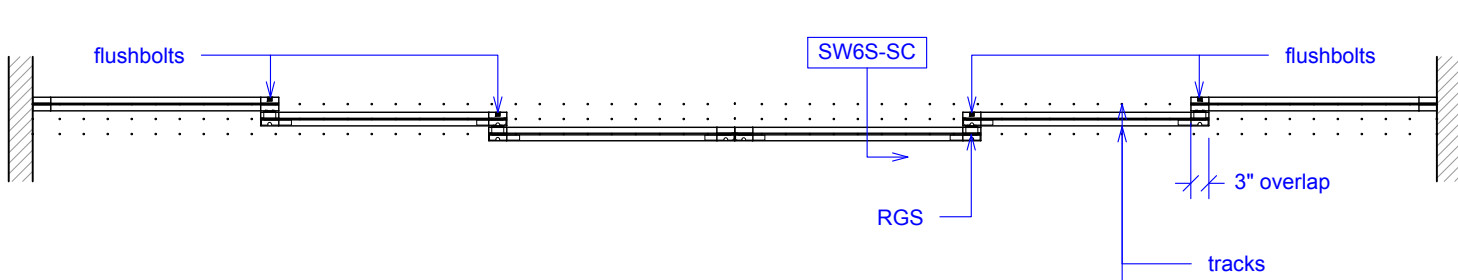


YOUR OPENING HEIGHT  
= PANEL + 2 $\frac{3}{4}$ "

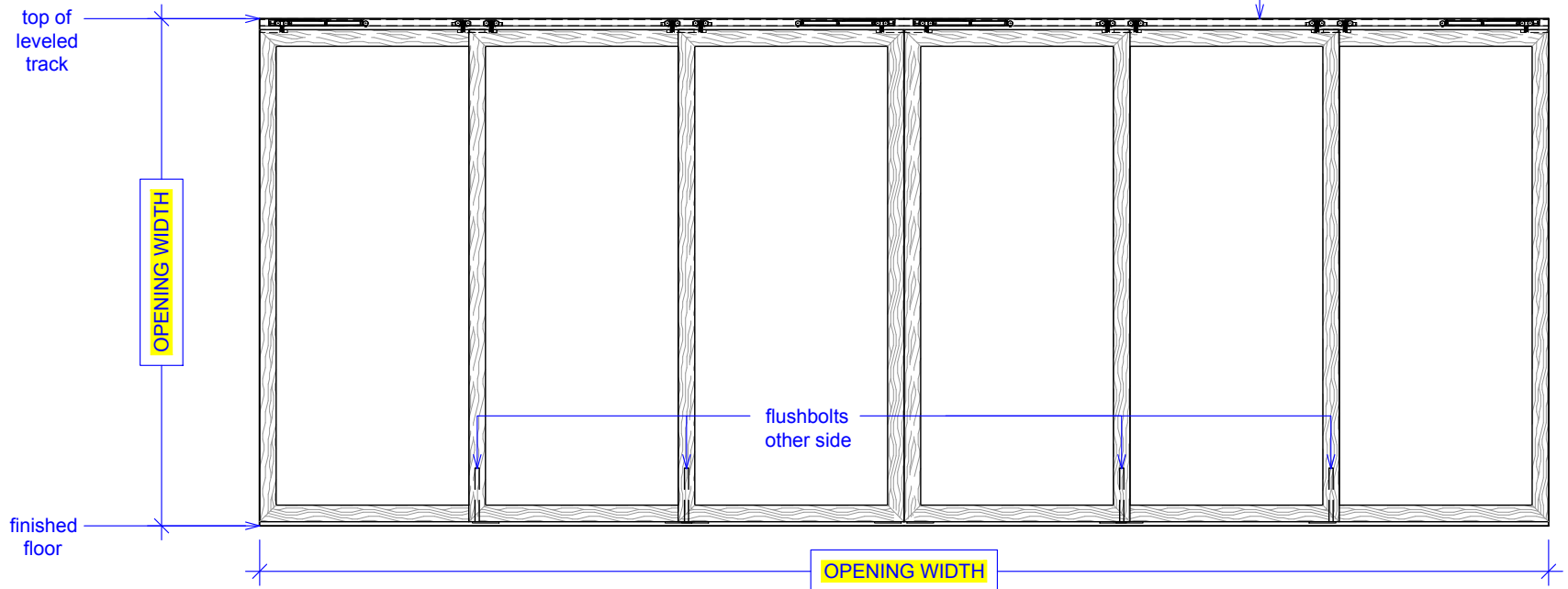
YOUR OPENING WIDTH  
= (6 x PANEL) - 12"



PLAN: open



PLAN: closed



ELEVATION: closed

# Sliding Wall w/ Soft-Close, 6 Panels, Symmetrical

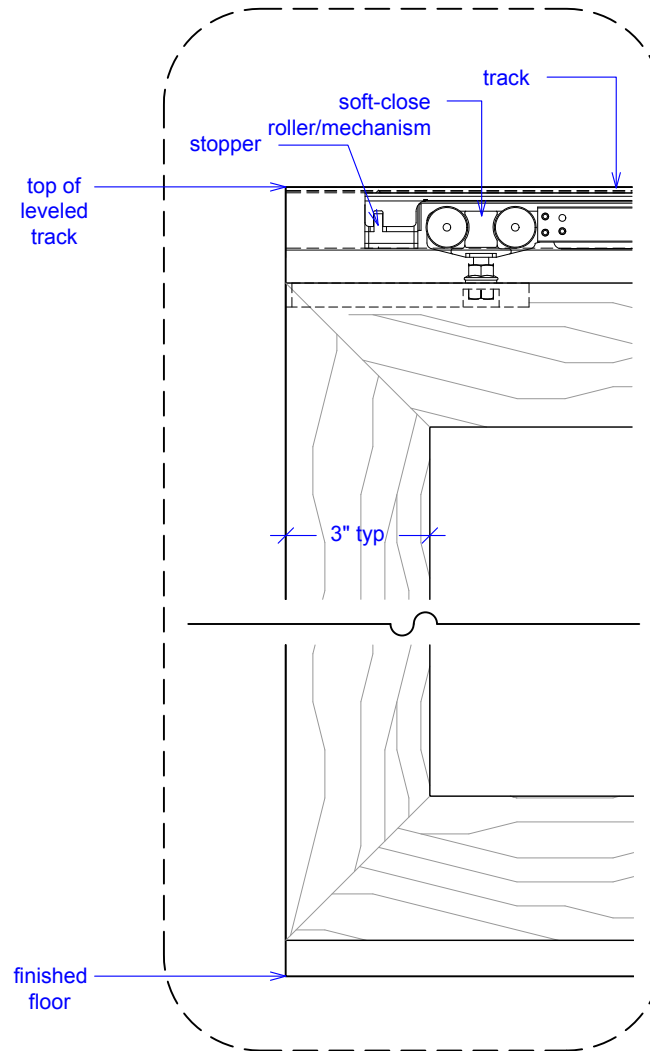
(SW6S-SC)

## ELEVATION DETAILS

RAYDOOR STANDARD  
SYSTEM DRAWINGS  
©2020



ELEVATION: details

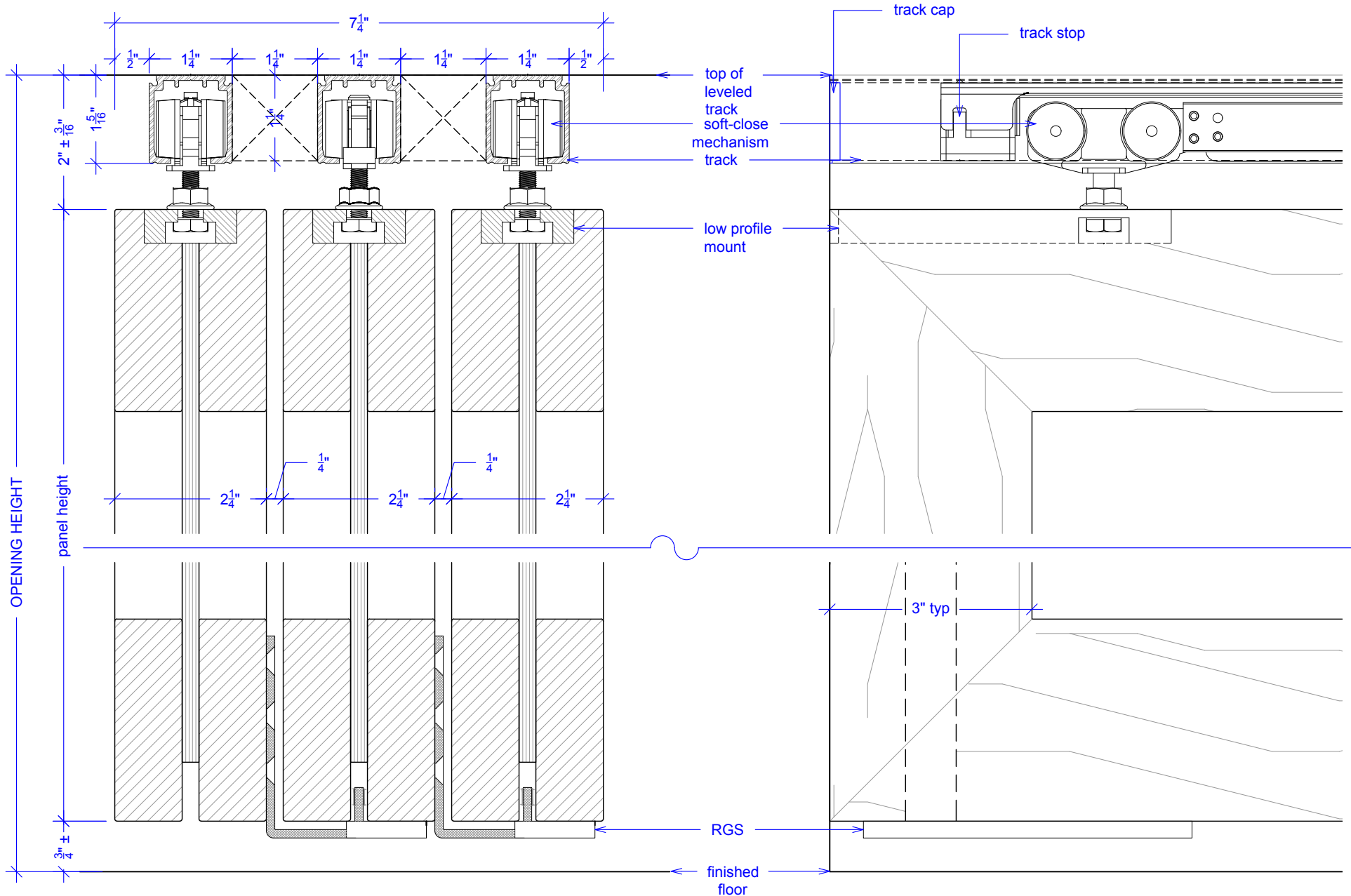


# Sliding Wall w/ Soft-Close, 6 Panels, Symmetrical

(SW6S-SC)

## SECTION

RAYDOOR STANDARD  
SYSTEM DRAWINGS  
©2020



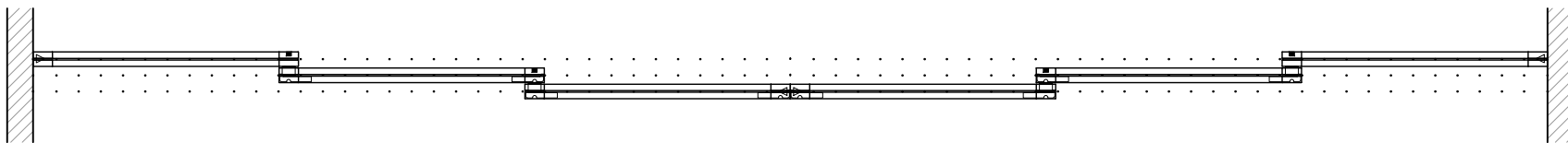
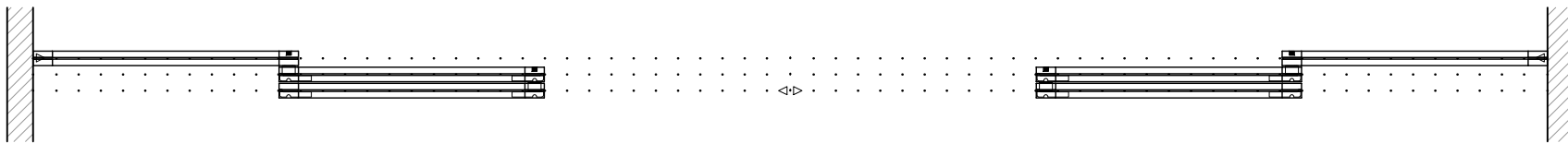
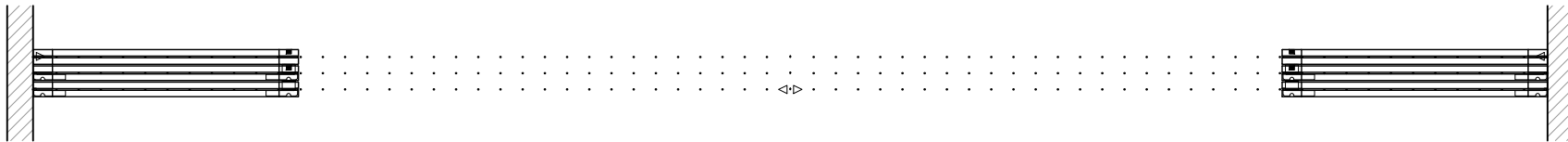
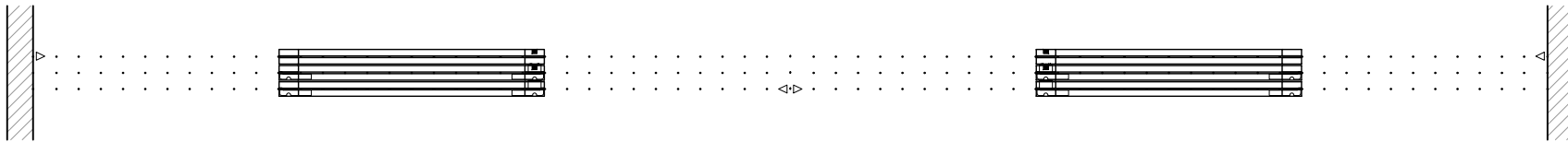
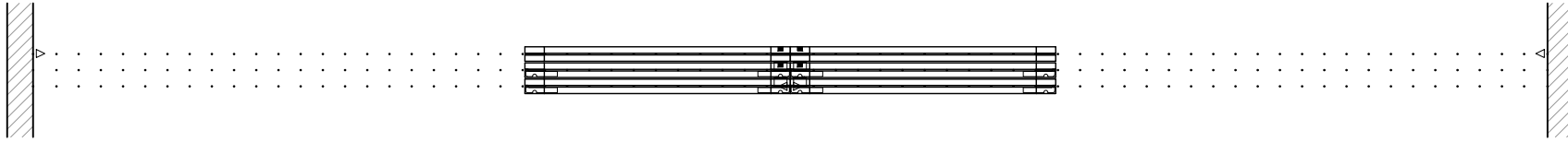
Important Notes:  
Each panel weights approximately 75-110 lbs. Secure tracks accordingly.

# Sliding Wall w/ Soft-Close, 6 Panels, Symmetrical

(SW6S-SC)

## OPERATION OVERVIEW

RAYDOOR STANDARD  
SYSTEM DRAWINGS  
©2020



**KEY:**

- ▶ stopper/  
release  
device
- RGS hook
- └ RGS stop
- flushbolt