

Sliding Wall, 6 Panels, Symmetrical

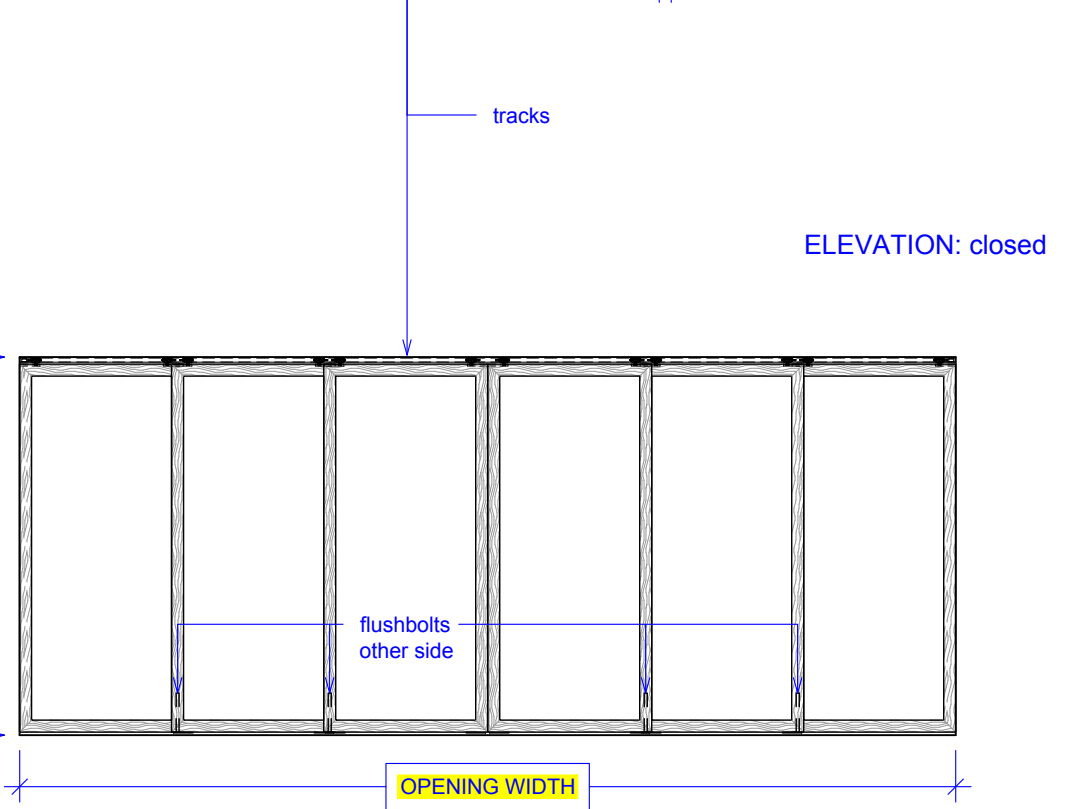
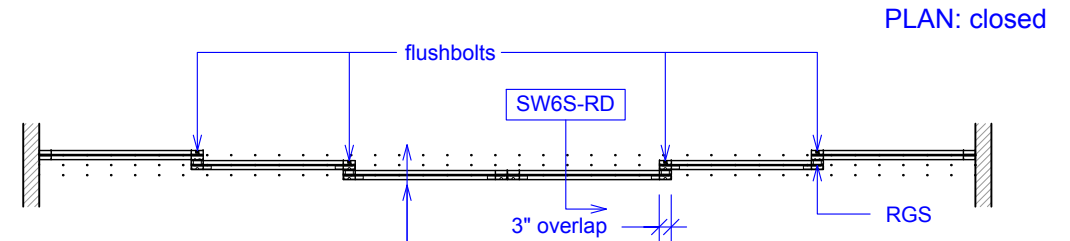
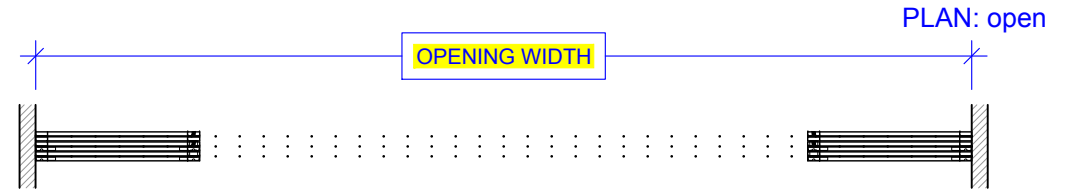
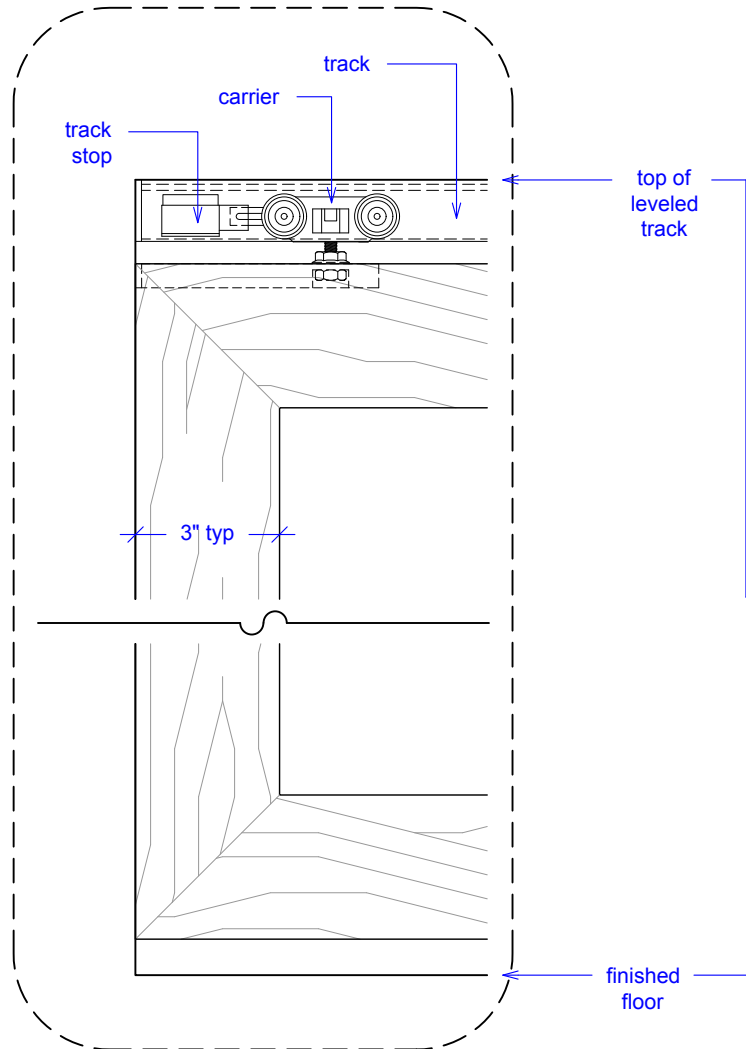
(SW6S-RD)

ELEVATION

RAYDOOR STANDARD
SYSTEM DRAWINGS
©2020



YOUR OPENING HEIGHT = PANEL + 2 $\frac{1}{2}$ "
YOUR OPENING WIDTH = (6 x PANEL) - 12"

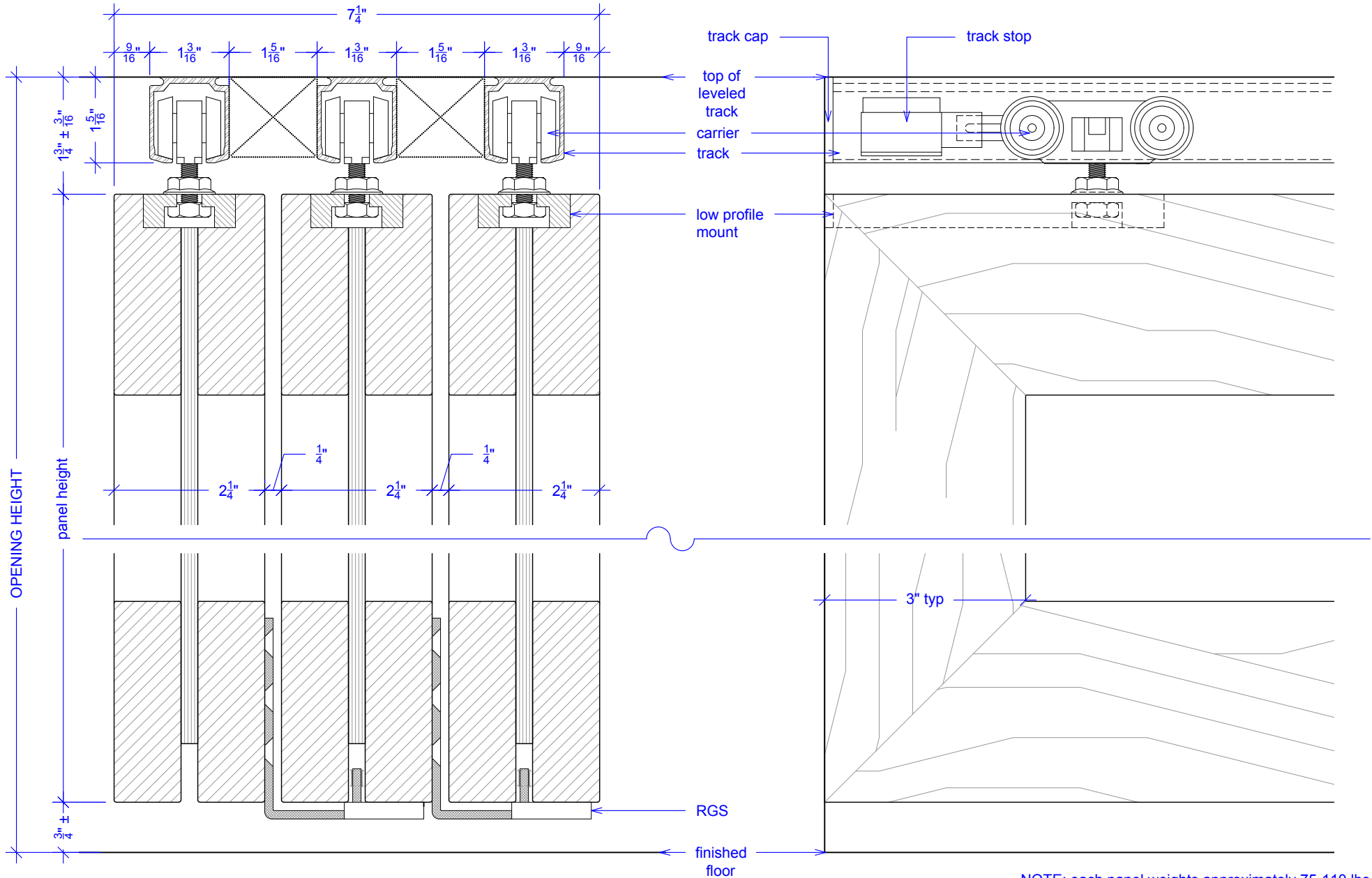


Sliding Wall, 6 Panels, Symmetrical

(SW6S-RD)

SECTION

RAYDOOR STANDARD
SYSTEM DRAWINGS
©2020



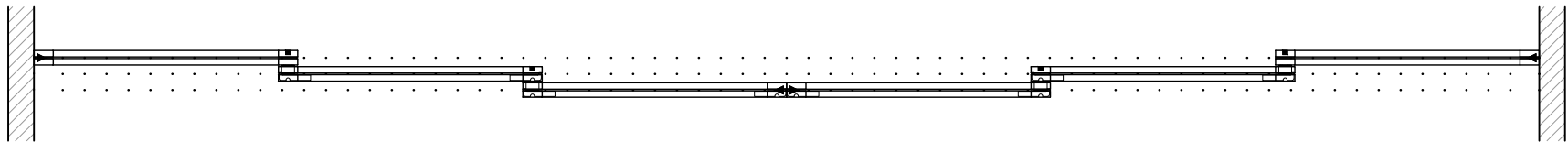
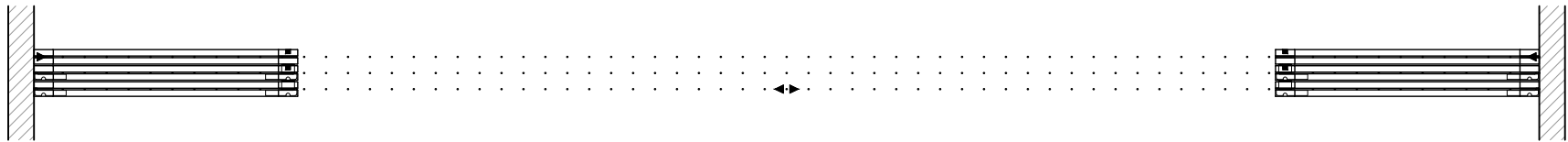
NOTE: each panel weights approximately 75-110 lbs.
Secure tracks accordingly.

Sliding Wall, 6 Panels, Symmetrical

(SW6S-RD)

OPERATION OVERVIEW

RAYDOOR STANDARD
SYSTEM DRAWINGS
©2020



KEY:

▶ track stop

□ RGS hook

⌋ RGS stop

■ flushbolt