

Sliding Wall w/ Soft-Close, 4 Panels

(SW4-SC)

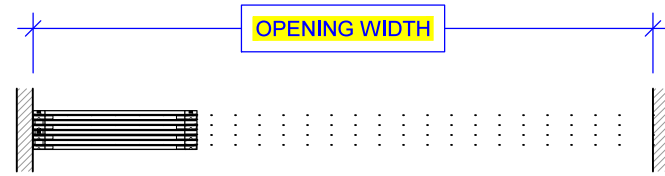
ELEVATION

RAYDOOR STANDARD
SYSTEM DRAWINGS
©2020

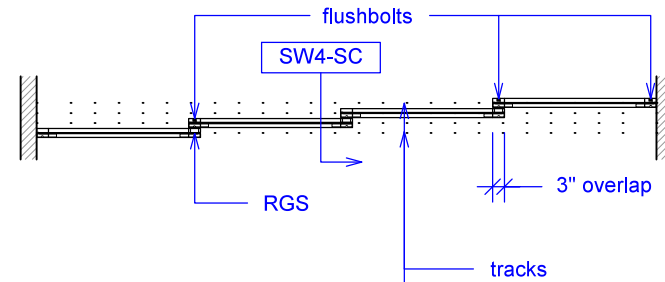


YOUR OPENING HEIGHT = PANEL + 2³/₄"
YOUR OPENING WIDTH = (4 x PANEL) - 9"

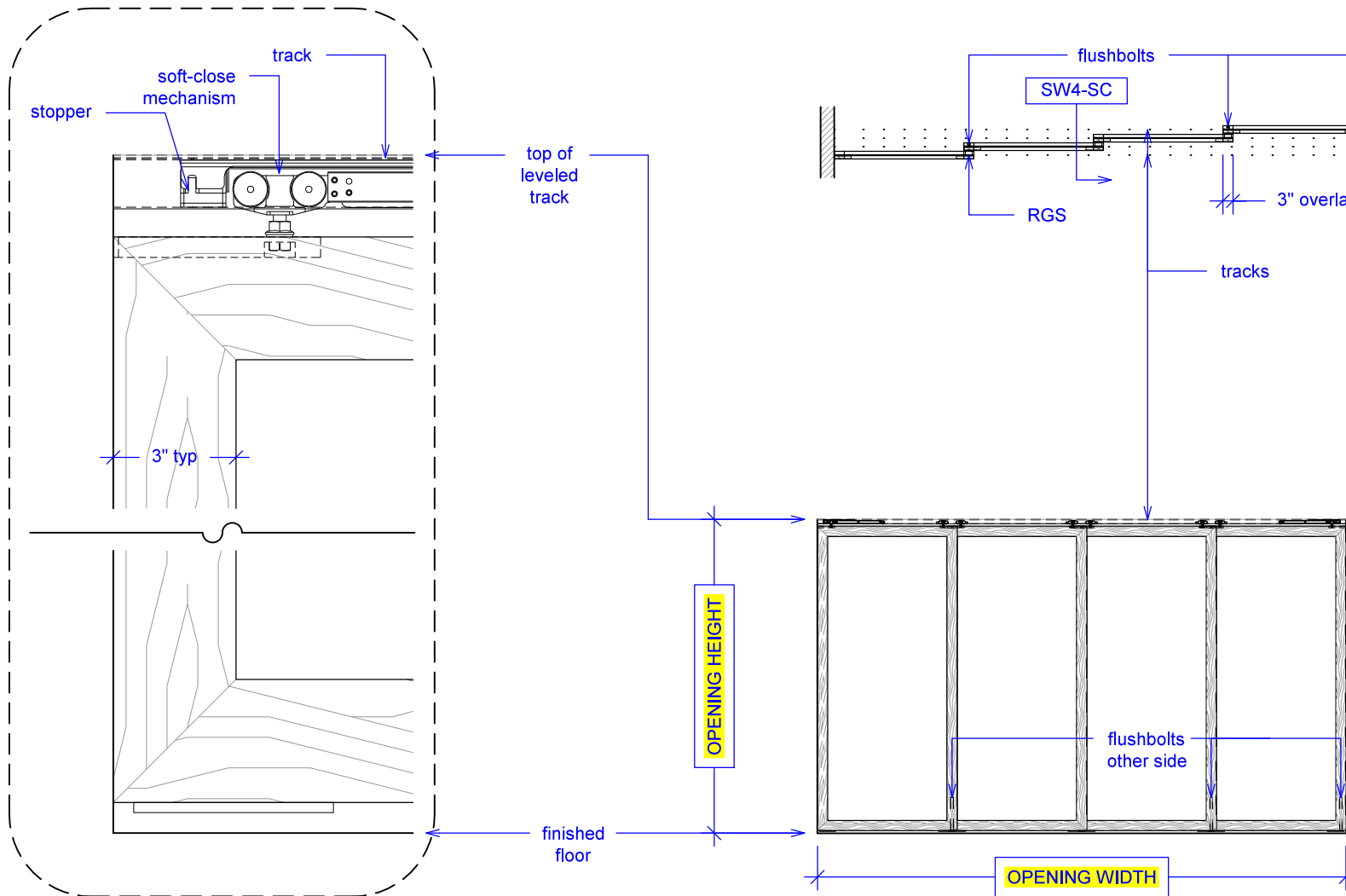
PLAN: open



PLAN: closed



ELEVATION: closed

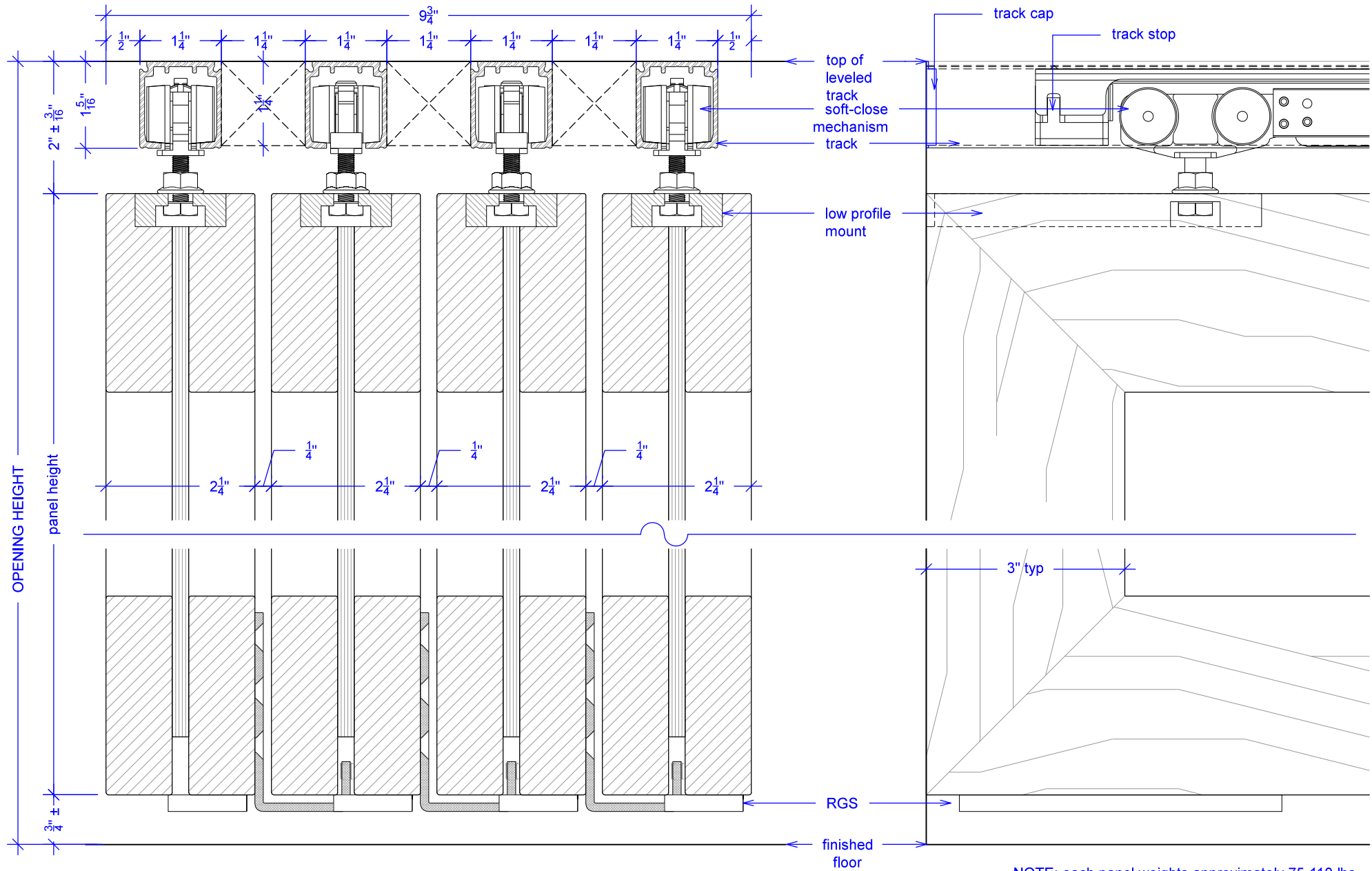


Sliding Wall w/ Soft-Close, 4 Panels

(SW4-SC)

SECTION

RAYDOOR STANDARD
SYSTEM DRAWINGS
©2020



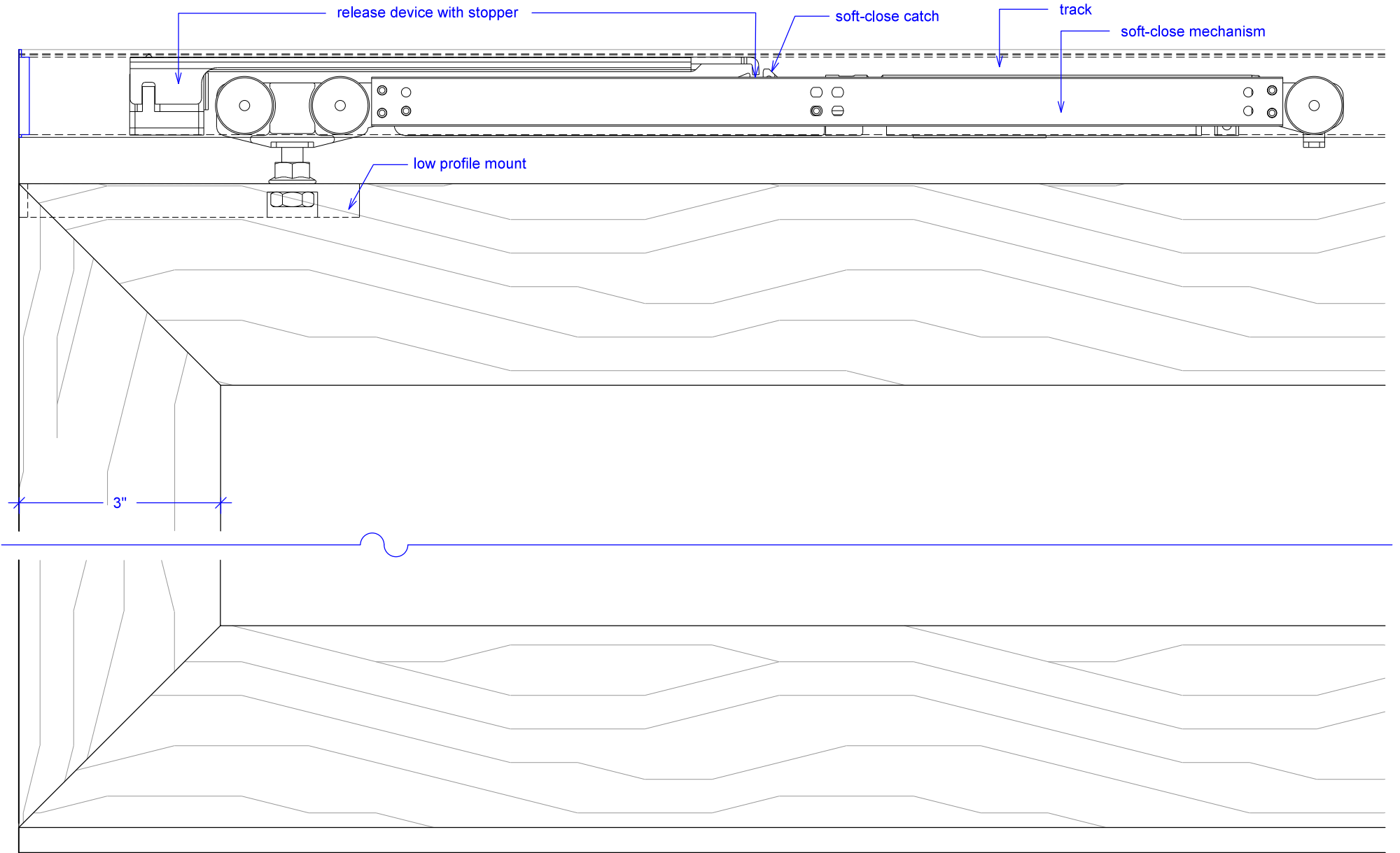
NOTE: each panel weights approximately 75-110 lbs.
Secure tracks accordingly.

Sliding Wall w/ Soft-Close, 4 Panels

(SW4-SC)

SOFT-CLOSE HARDWARE

RAYDOOR STANDARD
SYSTEM DRAWINGS
©2020

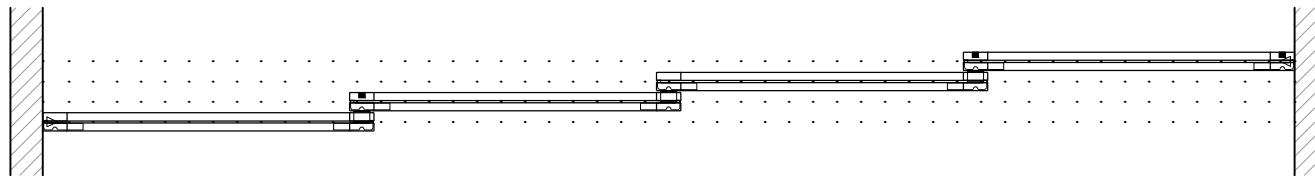
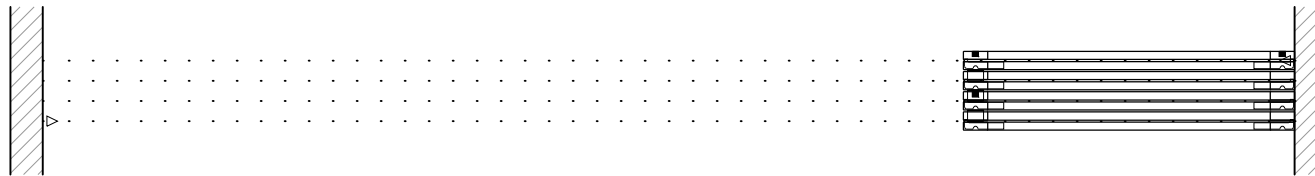
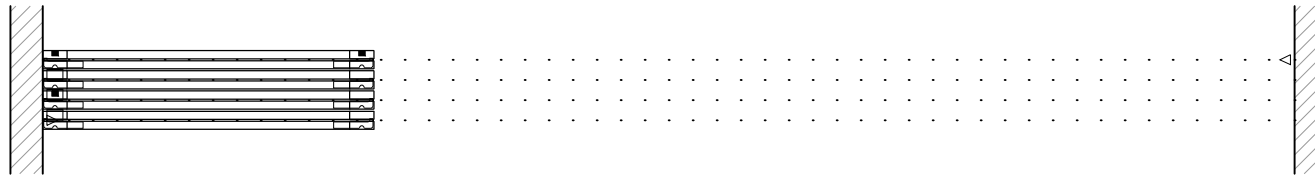


Sliding Wall w/ Soft-Close, 4 Panels





(SW4-SC)

OPERATION OVERVIEW

RAYDOOR STANDARD
SYSTEM DRAWINGS
©2020



KEY:

-  stopper / release device
-  RGS hook
-  RGS stop
-  flushbolt