

Sliding Pocket Wall, 4 Panels, Symmetrical

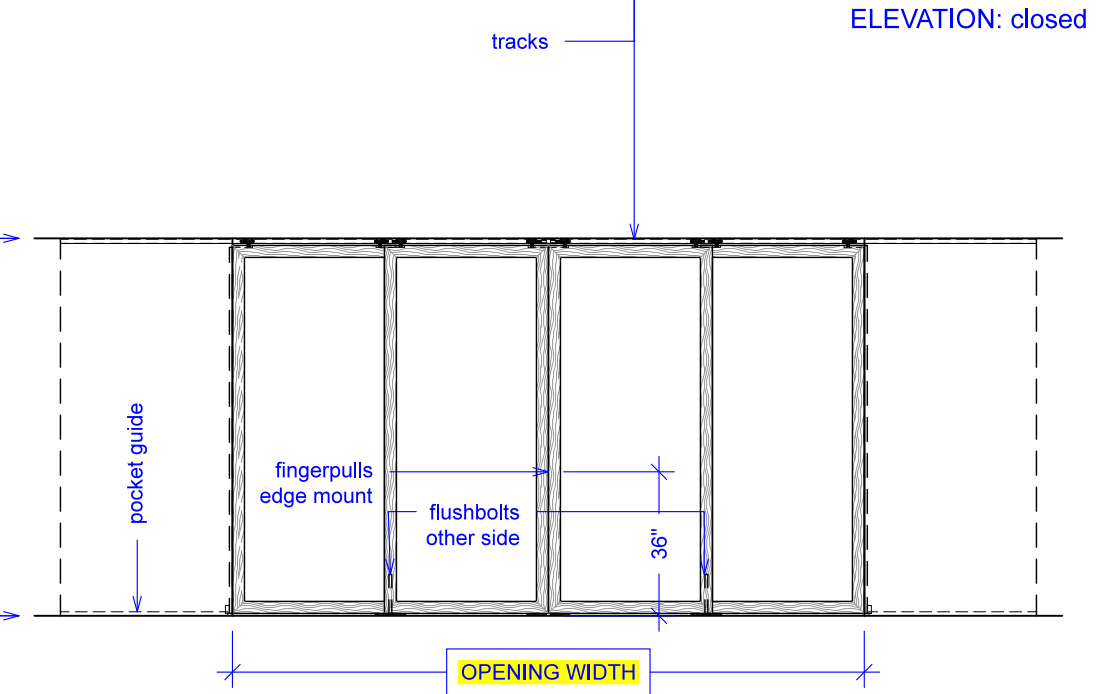
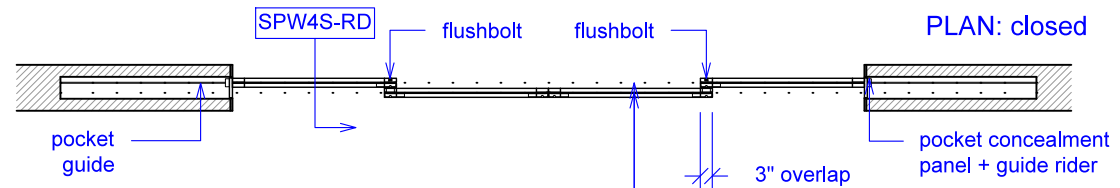
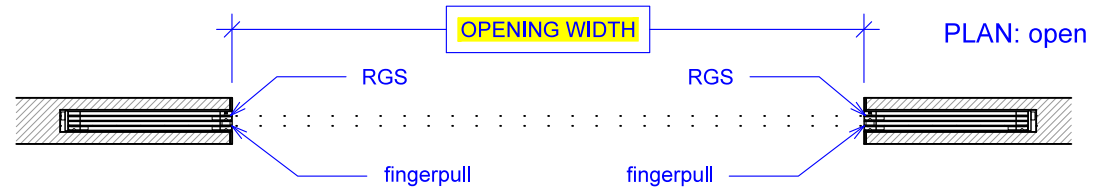
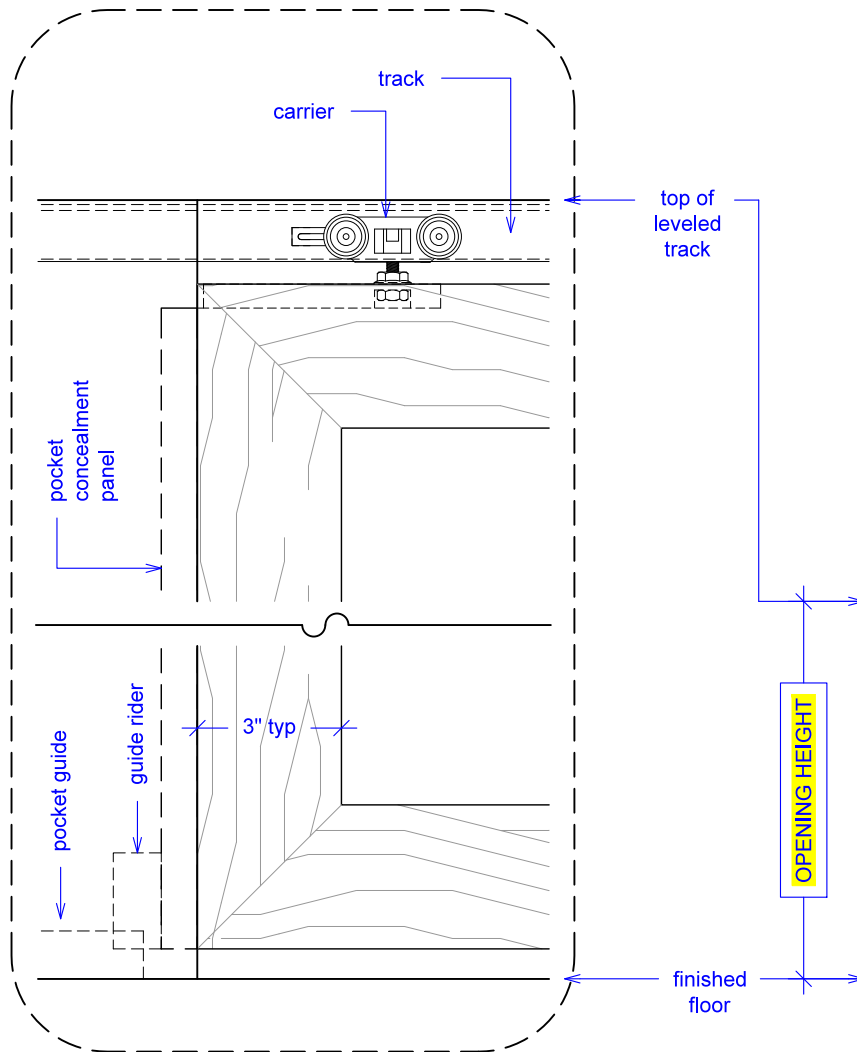
(SPW4S-RD)

ELEVATION

RAYDOOR STANDARD
SYSTEM DRAWINGS
©2020



YOUR OPENING HEIGHT = PANEL + 2³/₈"
YOUR OPENING WIDTH = (4 x PANEL) - 6"





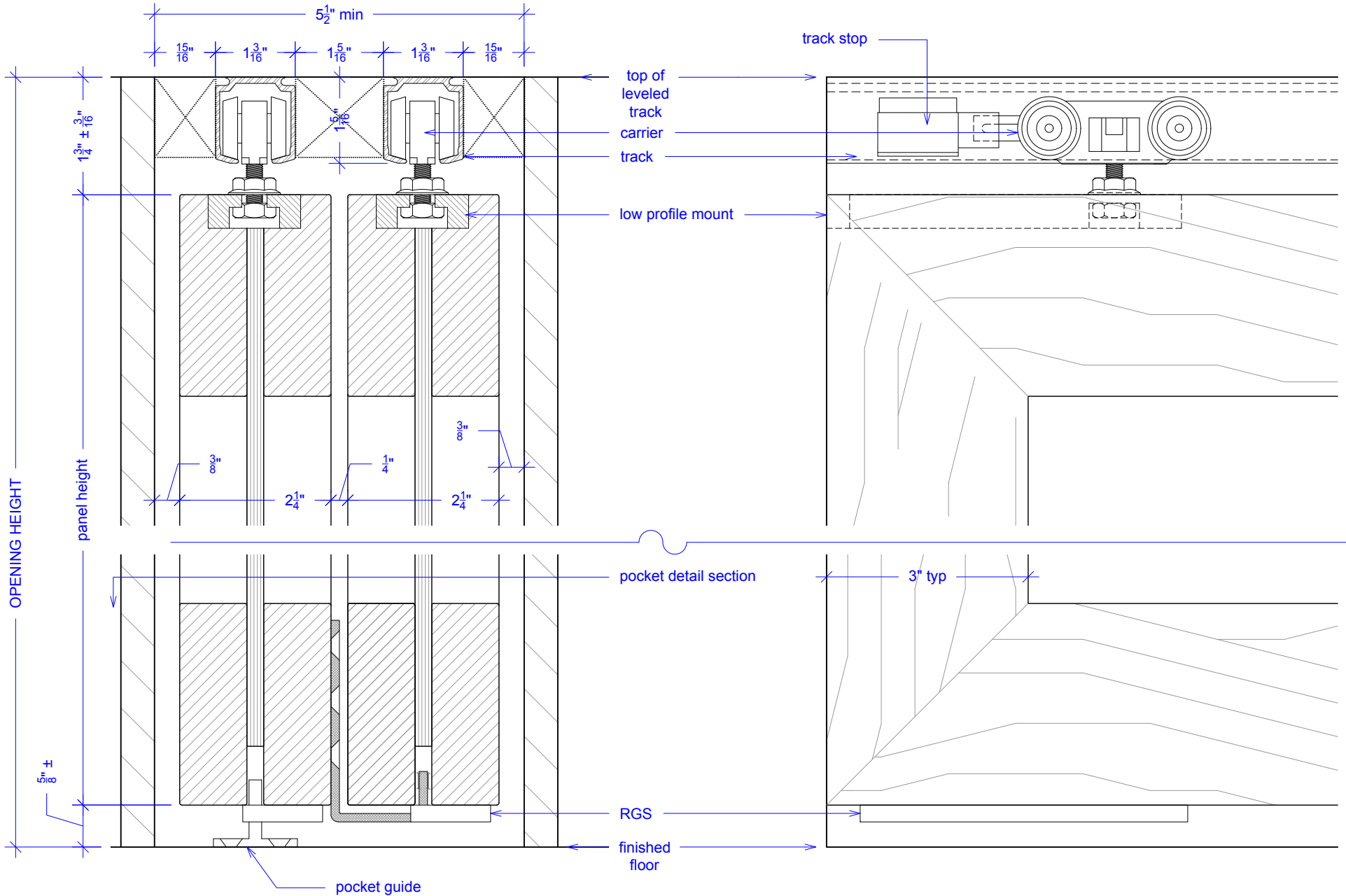
SYSTEM SECTION / DETAILS

SPW4S-XRDLP-225

RAYDOOR®

NOTE: each panel weighs approximately 75-110 lbs.
Secure tracks accordingly.

Scale: half





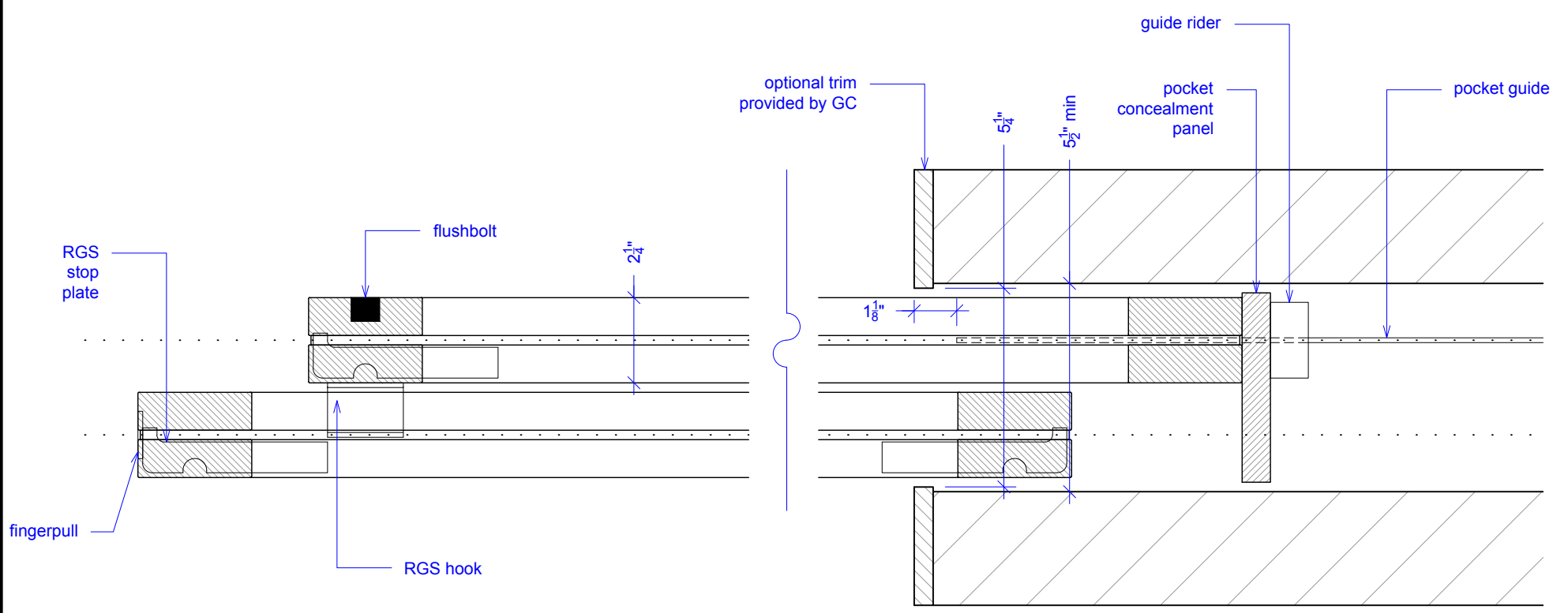
POCKET DETAIL
SPW4S-RD-225

RAYDOOR®

NOTE: each panel weights approximately 75-110 lbs.
 Secure tracks accordingly.

Scale: NTS

NOTE: pocket depth should be 2"
 deeper than width of doors



Guide rider is a block with a slit for the pocket guide; it allows for full extension, attach to bottom of concealment panel.



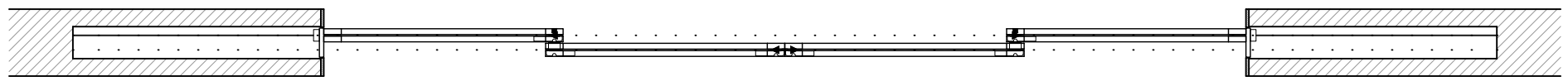
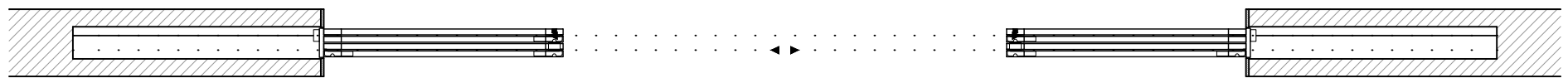
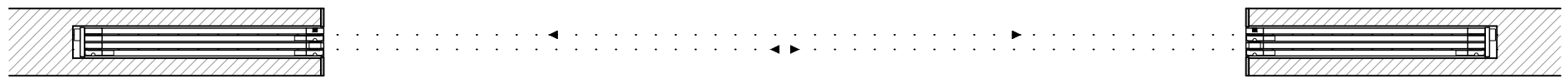
OPERATION OVERVIEW

SPW4S-RD





RAYDOOR®

NOTE: each panel weights approximately 75-110 lbs.
Secure tracks accordingly.

Scale: NTS



KEY:

| | | | |
|--|--|--|--|
|  RGS hook |  RGS stop |  pocket guide |  track stop |
|--|--|--|--|