

Sliding Pocket Wall w/ Soft-Close, 4 Panels

(SPW4-SC)

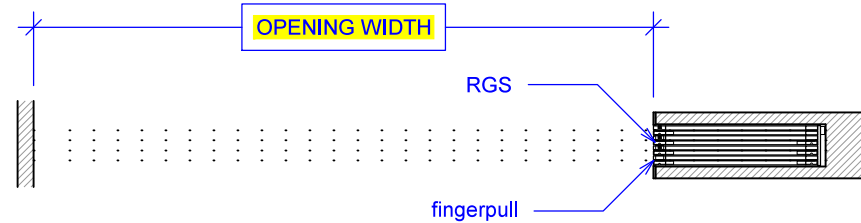
ELEVATION

RAYDOOR STANDARD
SYSTEM DRAWINGS
©2020

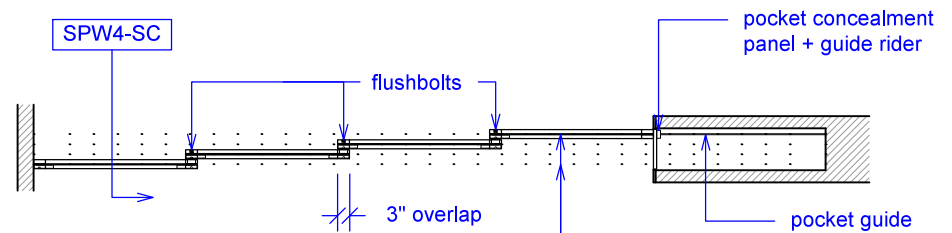


YOUR OPENING HEIGHT = PANEL + 2³/₄"
YOUR OPENING WIDTH = (4 x PANEL) - 9"

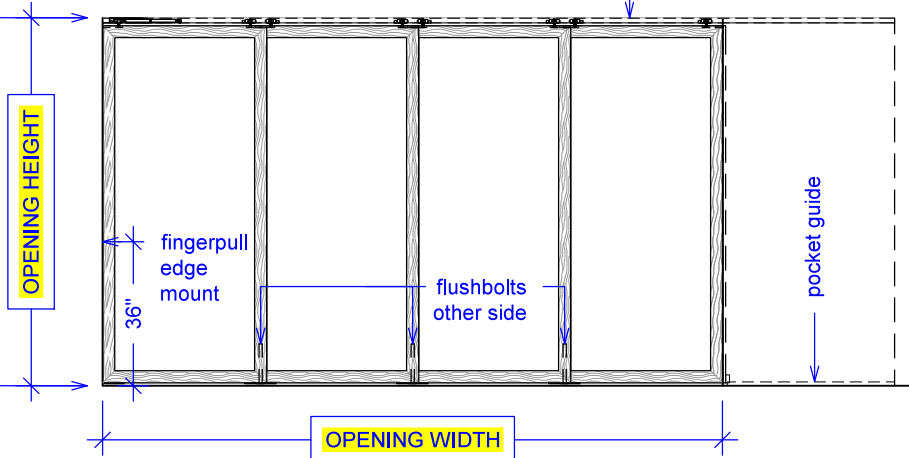
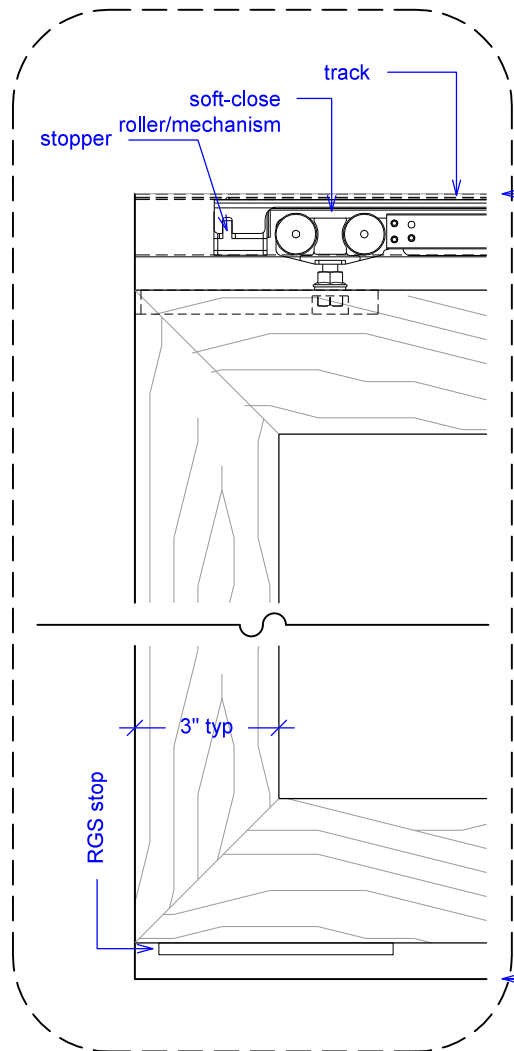
PLAN: open



PLAN: closed



ELEVATION: closed



top of leveled track

finished floor

OPENING HEIGHT

OPENING WIDTH

tracks

flushbolts

3" overlap

RGS

fingerpull

pocket concealment panel + guide rider

pocket guide

pocket guide

fingerpull edge mount

flushbolts other side

RGS stop

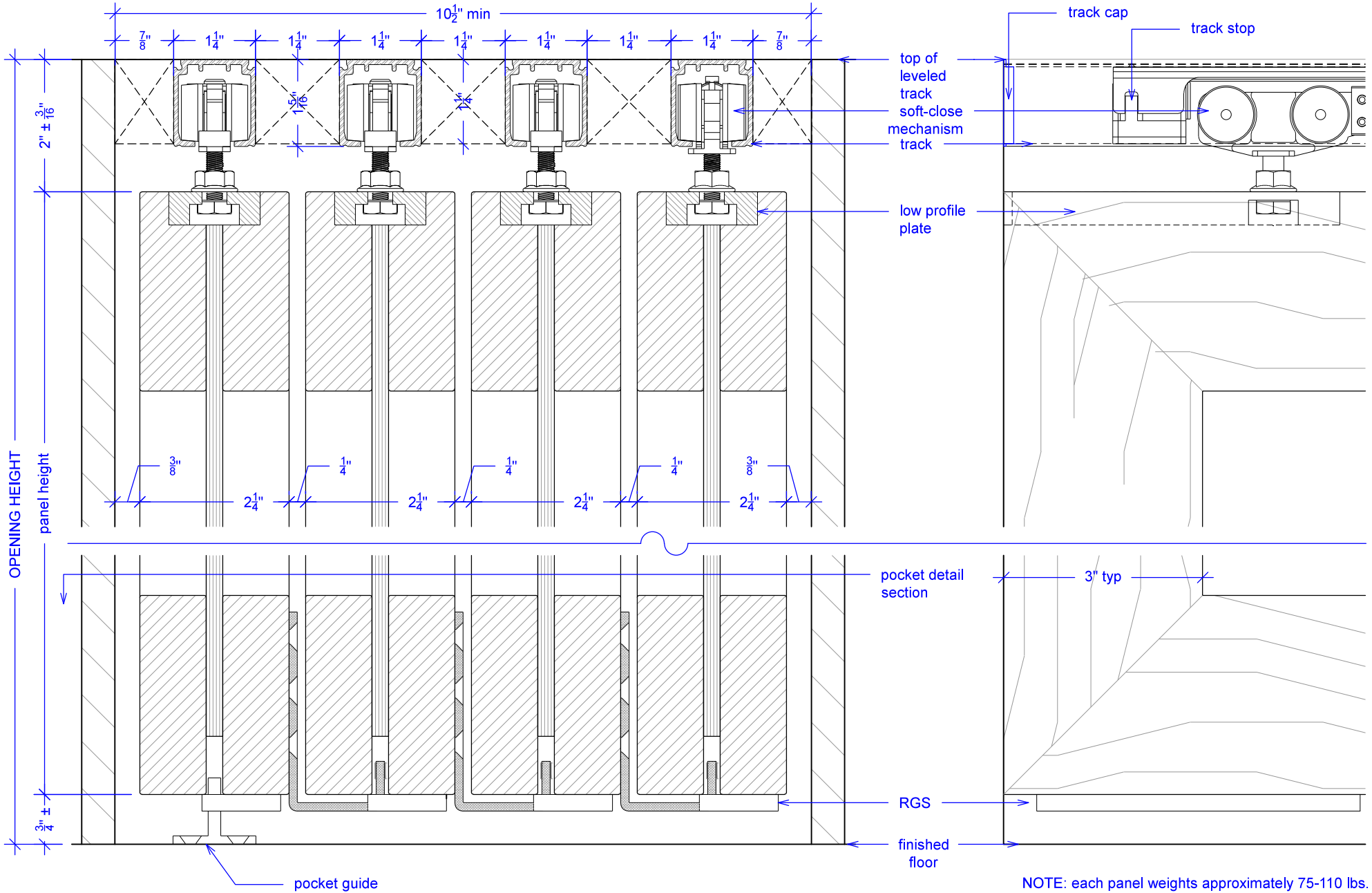
3" typ

Sliding Pocket Wall w/ Soft-Close, 4 Panels

(SPW4-SC)

SECTION

RAYDOOR STANDARD
SYSTEM DRAWINGS
©2020



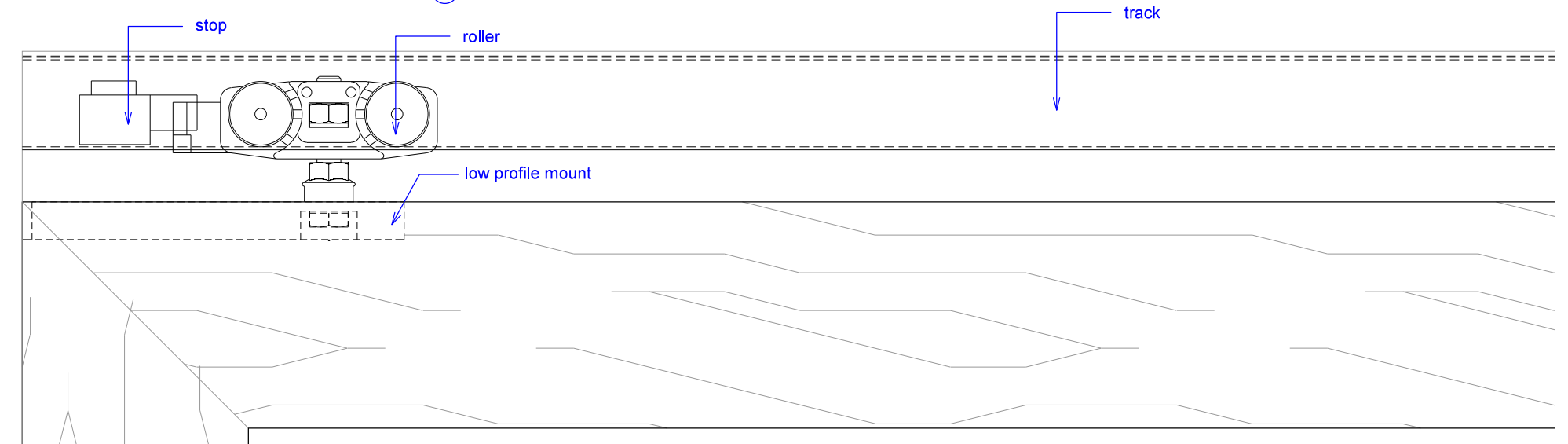
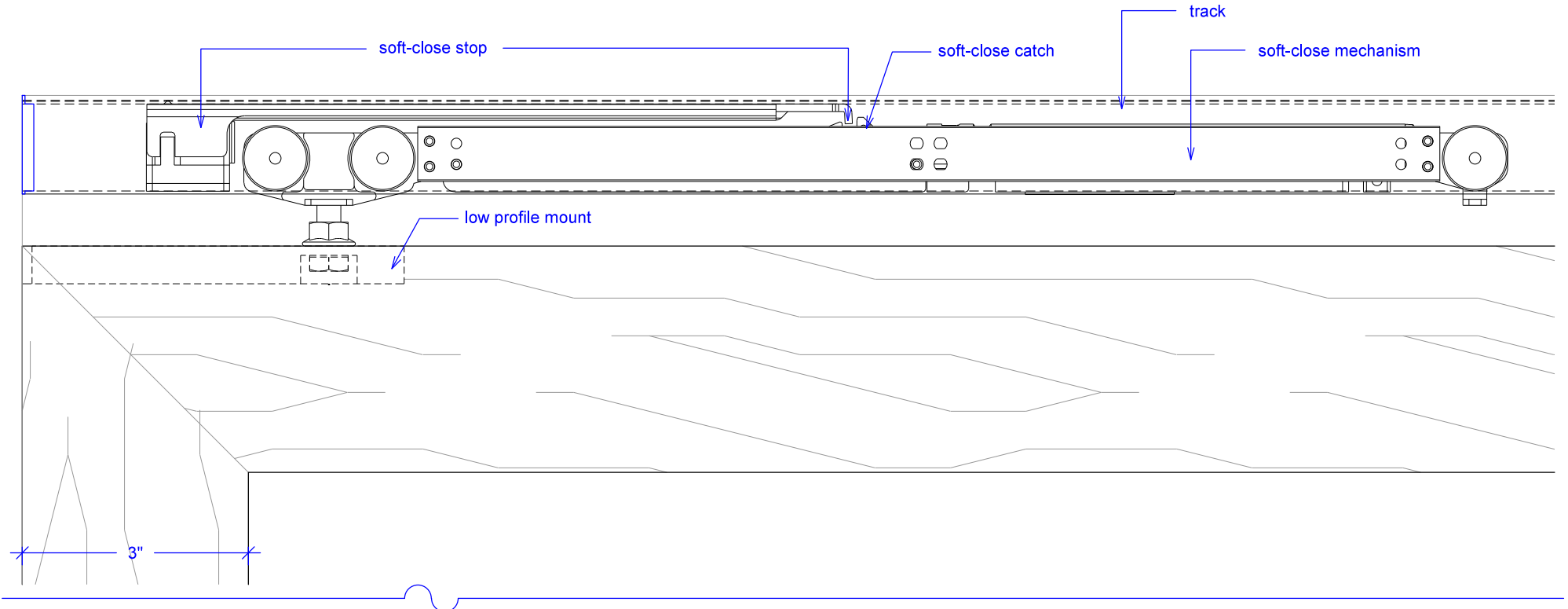
NOTE: each panel weights approximately 75-110 lbs.
Secure tracks accordingly.

Sliding Pocket Wall w/ Soft-Close, 4 Panels

(SPW4-SC)

SOFT-CLOSE HARDWARE

RAYDOOR STANDARD
SYSTEM DRAWINGS
©2020



Sliding Pocket Wall w/ Soft-Close, 4 Panels

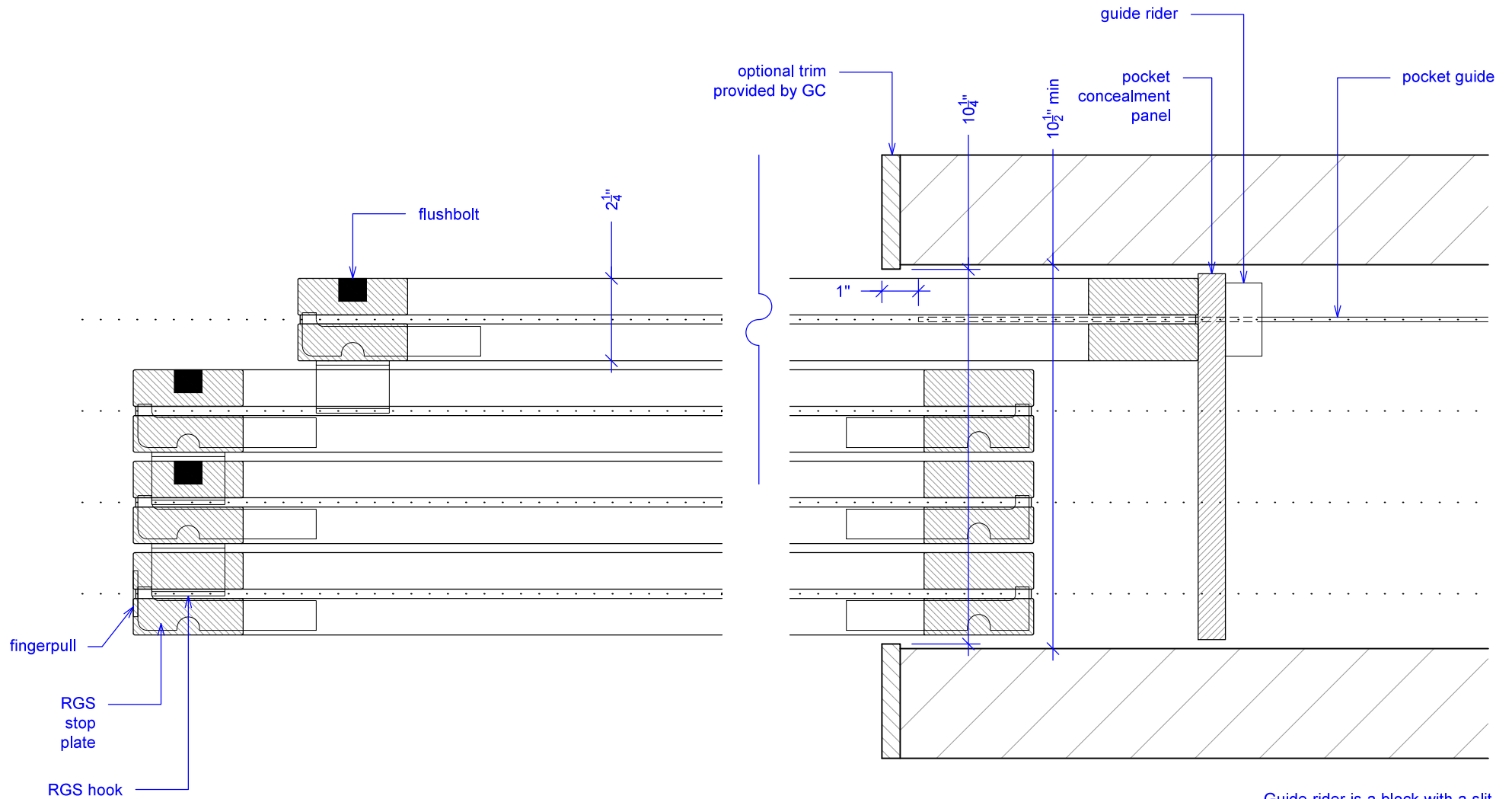
(SPW4-SC)

POCKET DETAIL

RAYDOOR STANDARD
SYSTEM DRAWINGS
©2020



NOTE: pocket depth should be 2"
deeper than width of doors



Guide rider is a block with a slit for the pocket guide; it allows for full extension, attach to bottom of concealment panel.

Sliding Pocket Wall w/ Soft-Close, 4 Panels

(SPW4-SC)

OPERATION OVERVIEW

RAYDOOR STANDARD
SYSTEM DRAWINGS
©2020

