

Sliding Pocket w/ Soft-Close, 1 Panel

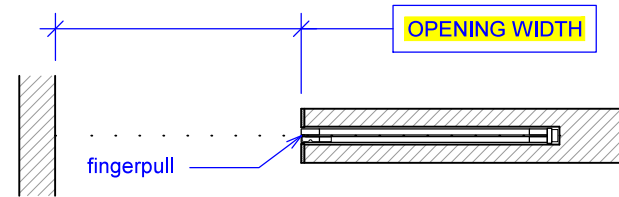
(SP1-SC)

ELEVATION

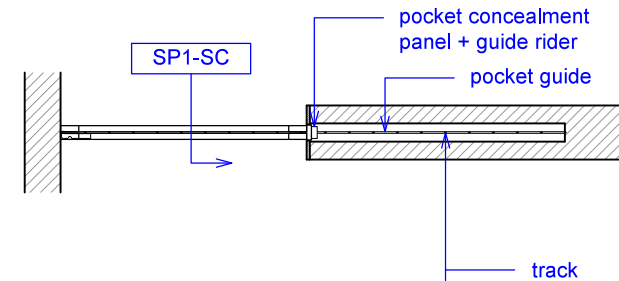
RAYDOOR STANDARD
SYSTEM DRAWINGS
©2020



PLAN: open

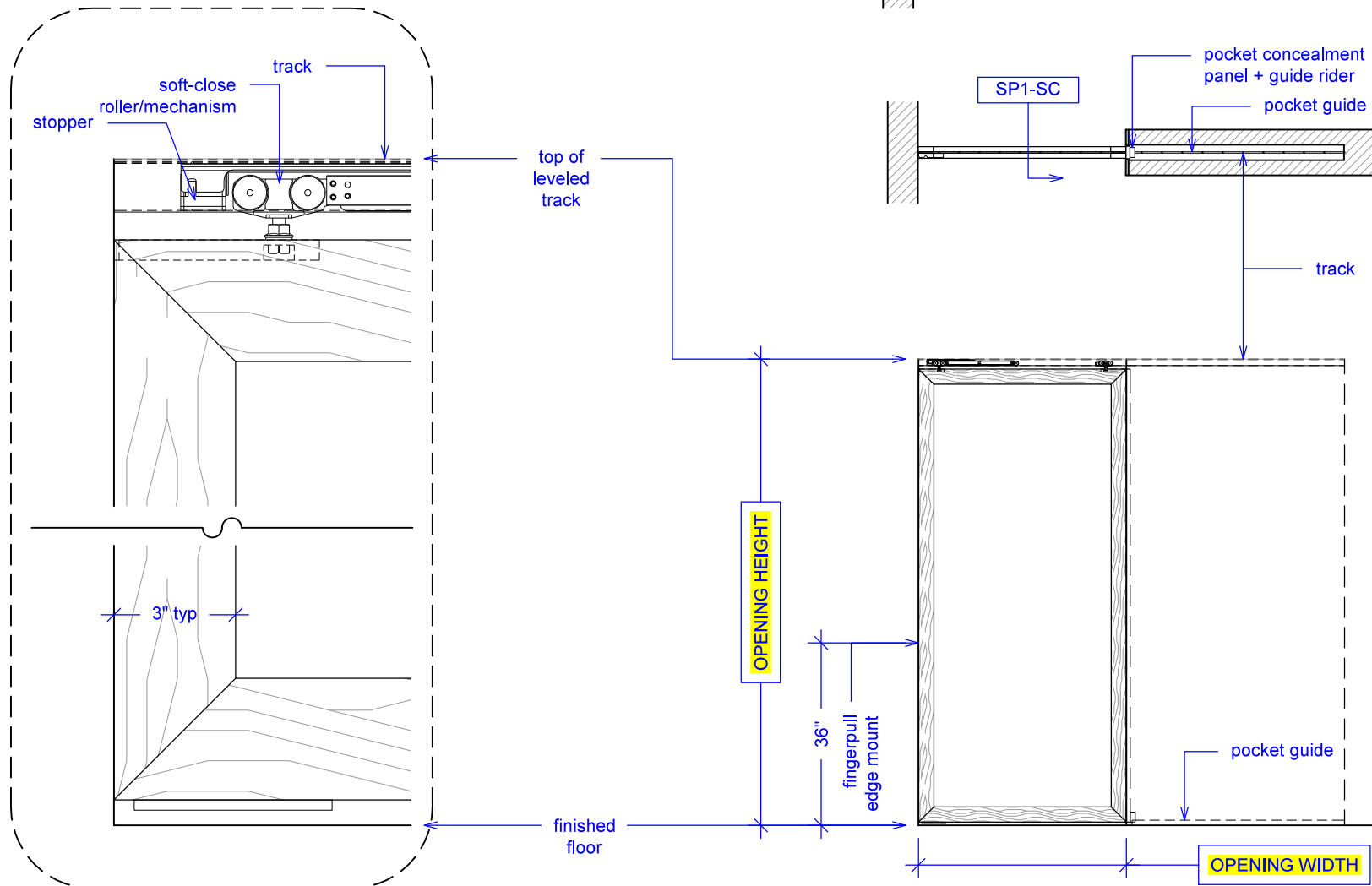


PLAN: closed



ELEVATION: closed

YOUR OPENING HEIGHT = PANEL + 2⁵/₈"
YOUR OPENING WIDTH = PANEL

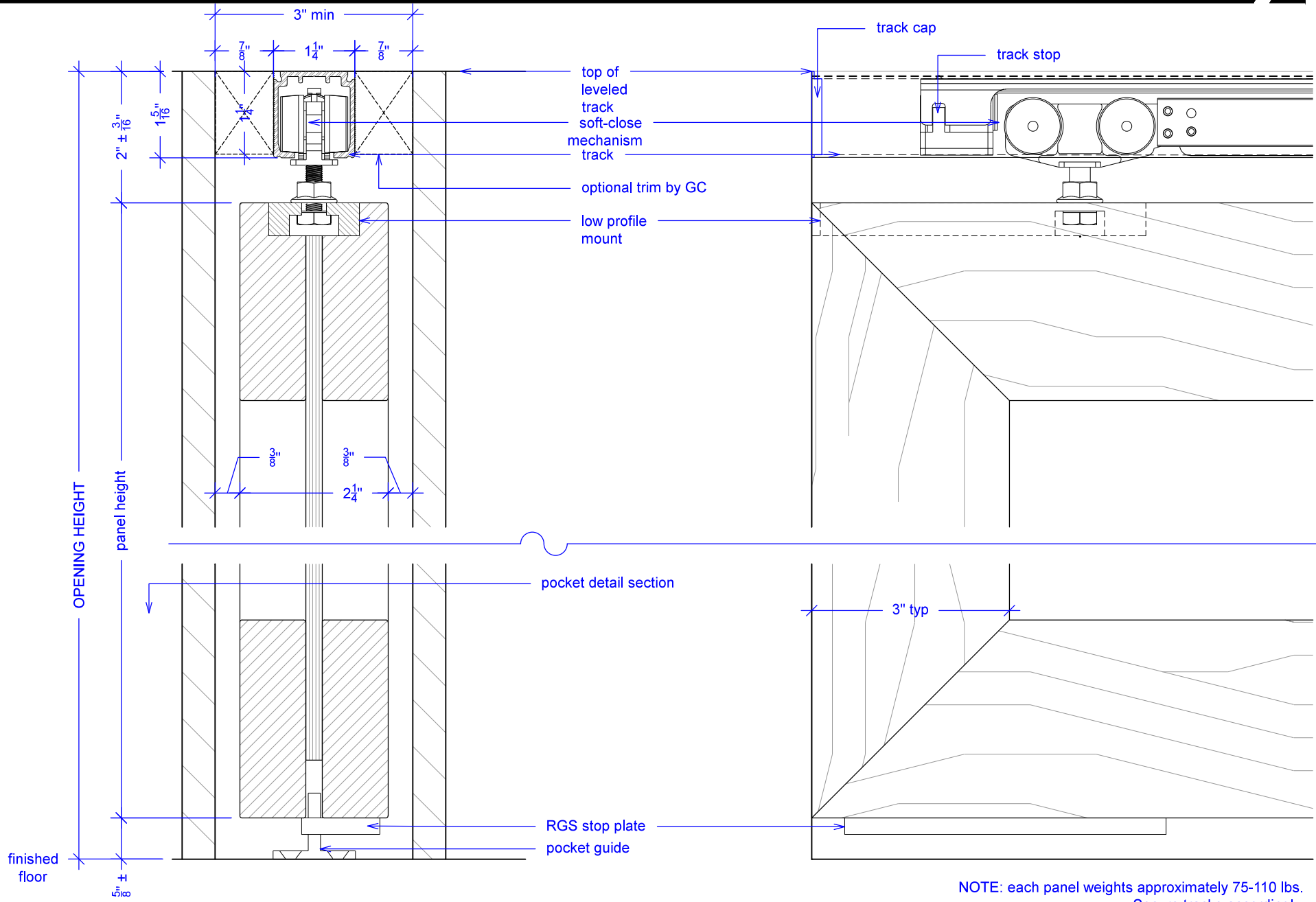


Sliding Pocket w/ Soft-Close, 1 Panel

(SP1-SC)

SECTION

RAYDOOR STANDARD
SYSTEM DRAWINGS
©2020



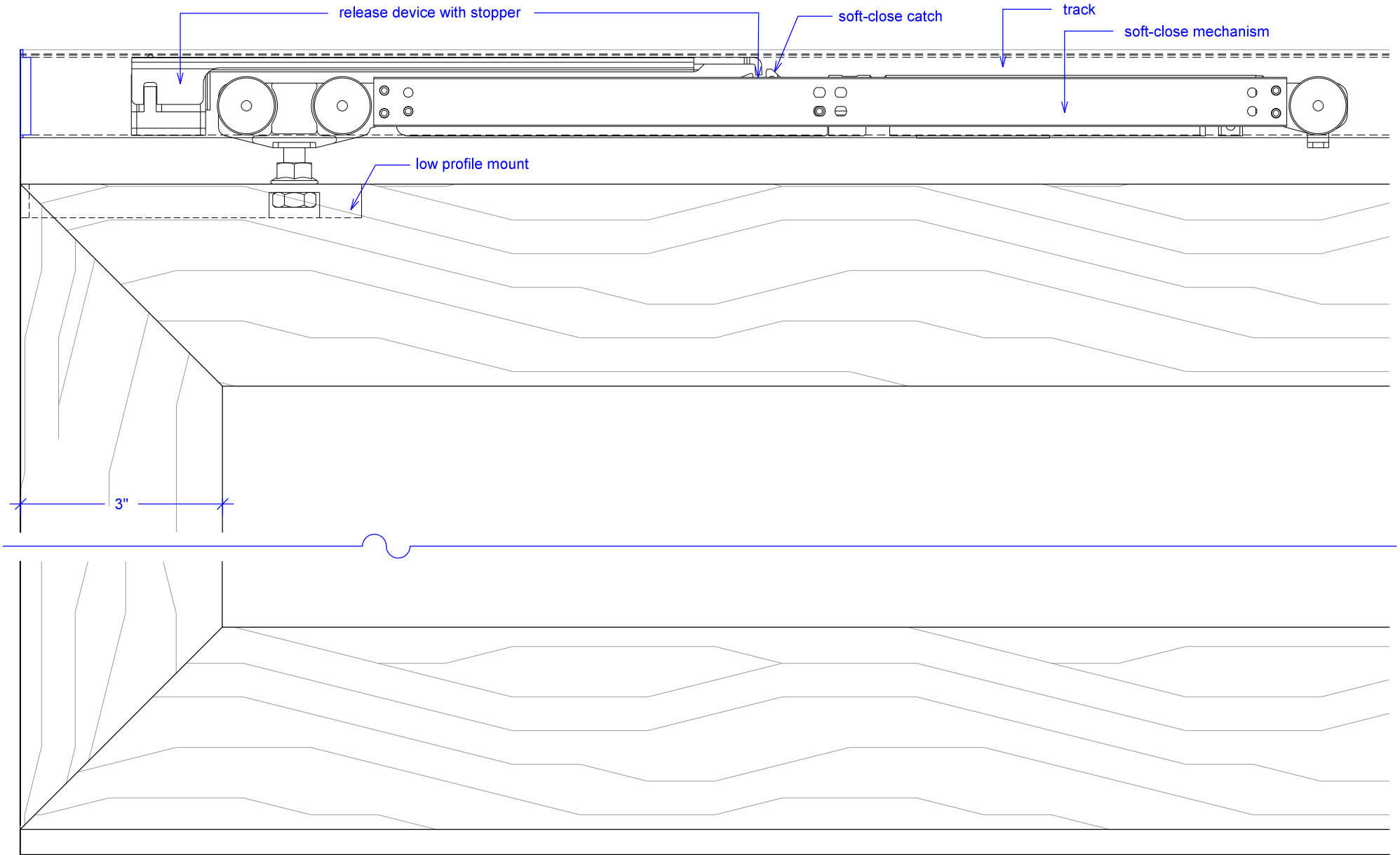
NOTE: each panel weights approximately 75-110 lbs.
Secure tracks accordingly.

Sliding Pocket w/ Soft-Close, 1 Panel

(SP1-SC)

SOFT-CLOSE HARDWARE

RAYDOOR STANDARD
SYSTEM DRAWINGS
©2020



Sliding Pocket w/ Soft-Close, 1 Panel

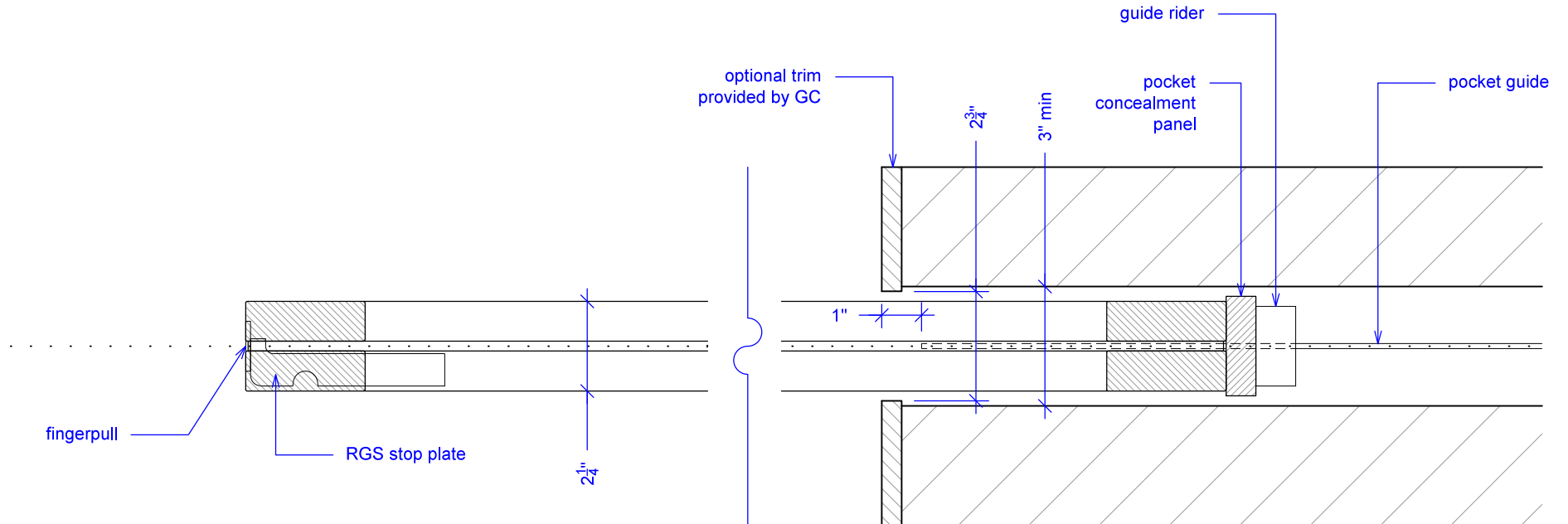
(SP1-SC)

POCKET DETAIL

RAYDOOR STANDARD
SYSTEM DRAWINGS
©2020



NOTE: pocket depth should be 2"
deeper than width of doors



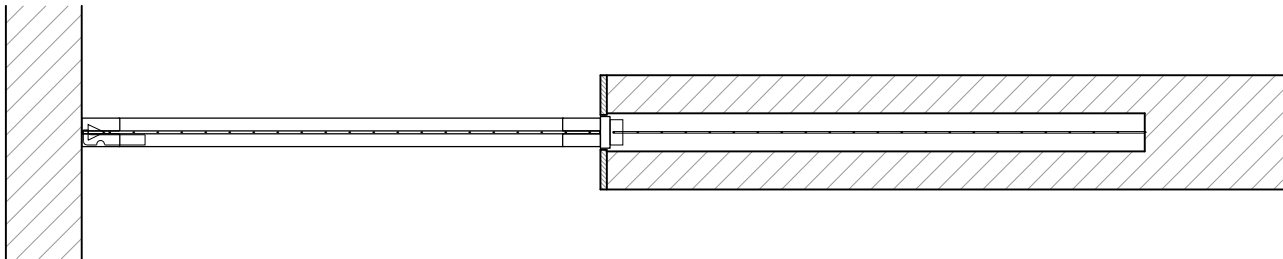
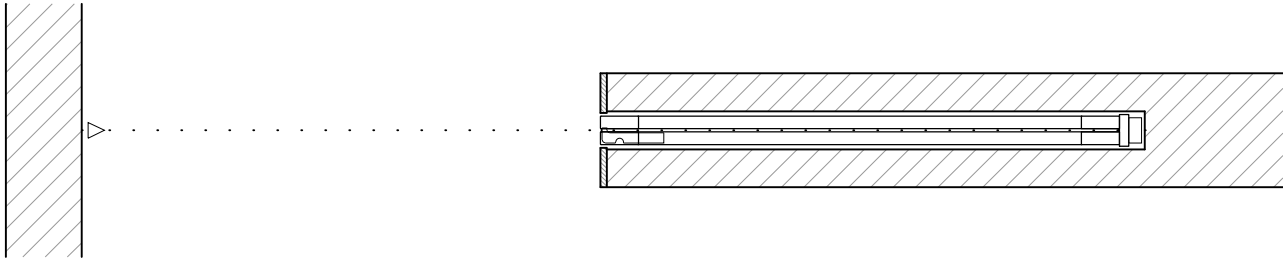
Guide rider is a block with a slit for the pocket guide; it allows for full extension, attach to bottom of concealment panel.

Sliding Pocket w/ Soft-Close, 1 Panel




(SP1-SC)

OPERATION OVERVIEW

RAYDOOR STANDARD
SYSTEM DRAWINGS
©2020



KEY:

 RGS stop	 pocket guide	 stopper/release device
--	--	--