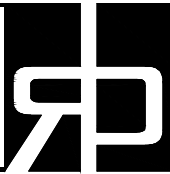


Sliding Bypass w/ Soft-Close, 5 Panels

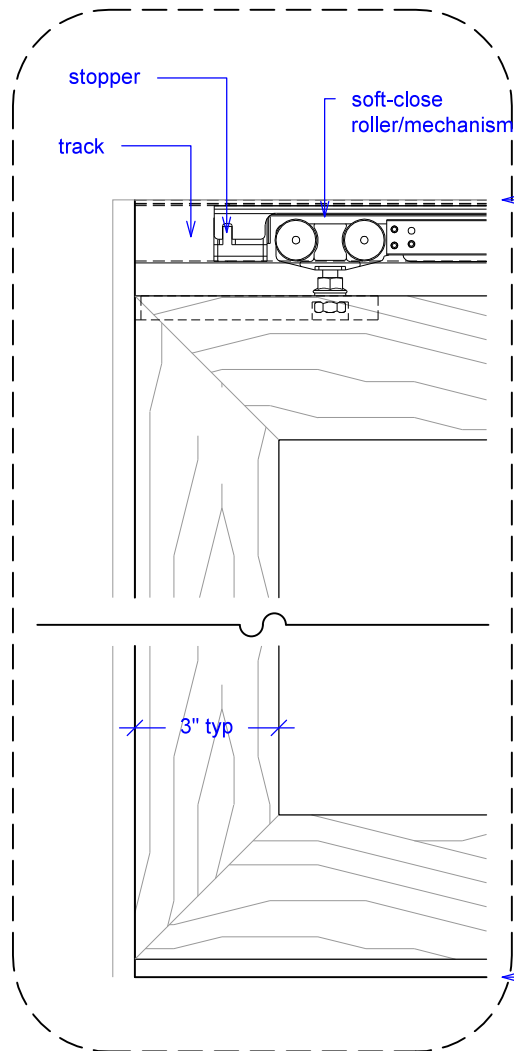
(SB5-SC)

ELEVATION

RAYDOOR STANDARD
SYSTEM DRAWINGS
©2020

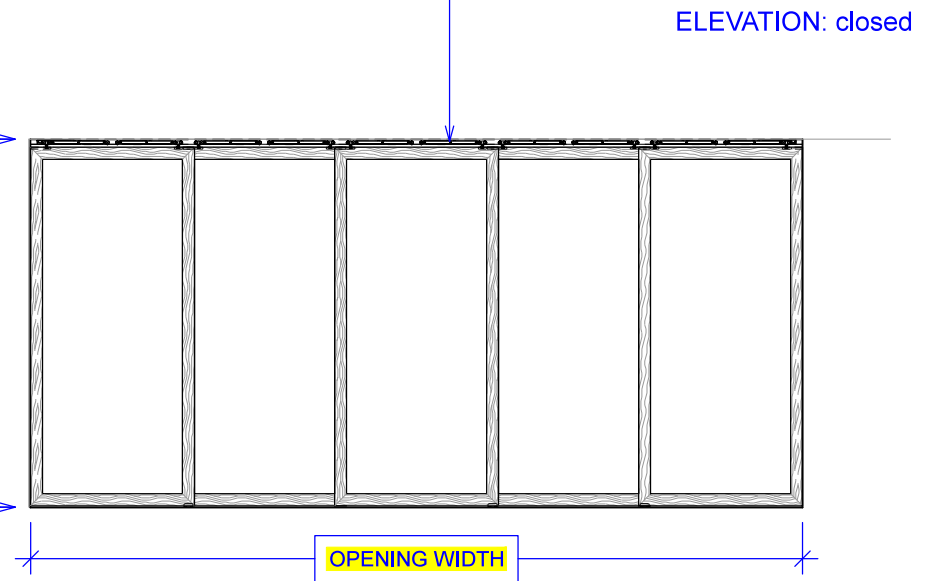
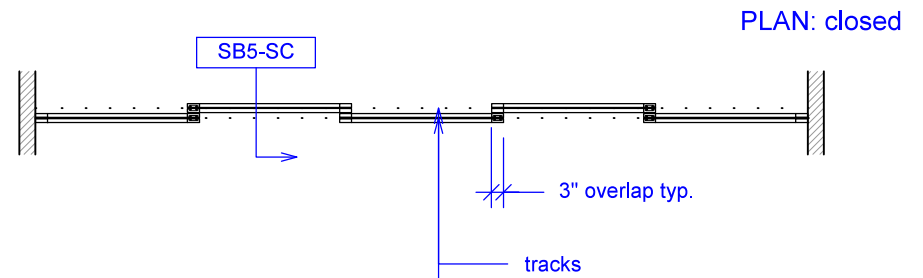
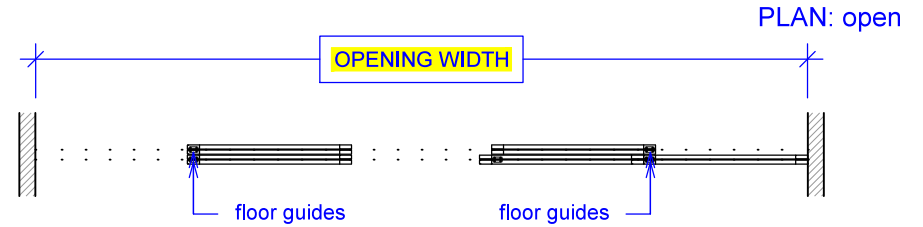


YOUR OPENING HEIGHT = PANEL + 2³/₈"
YOUR OPENING WIDTH = (5 x PANEL) - 12"



top of leveled track

finished floor

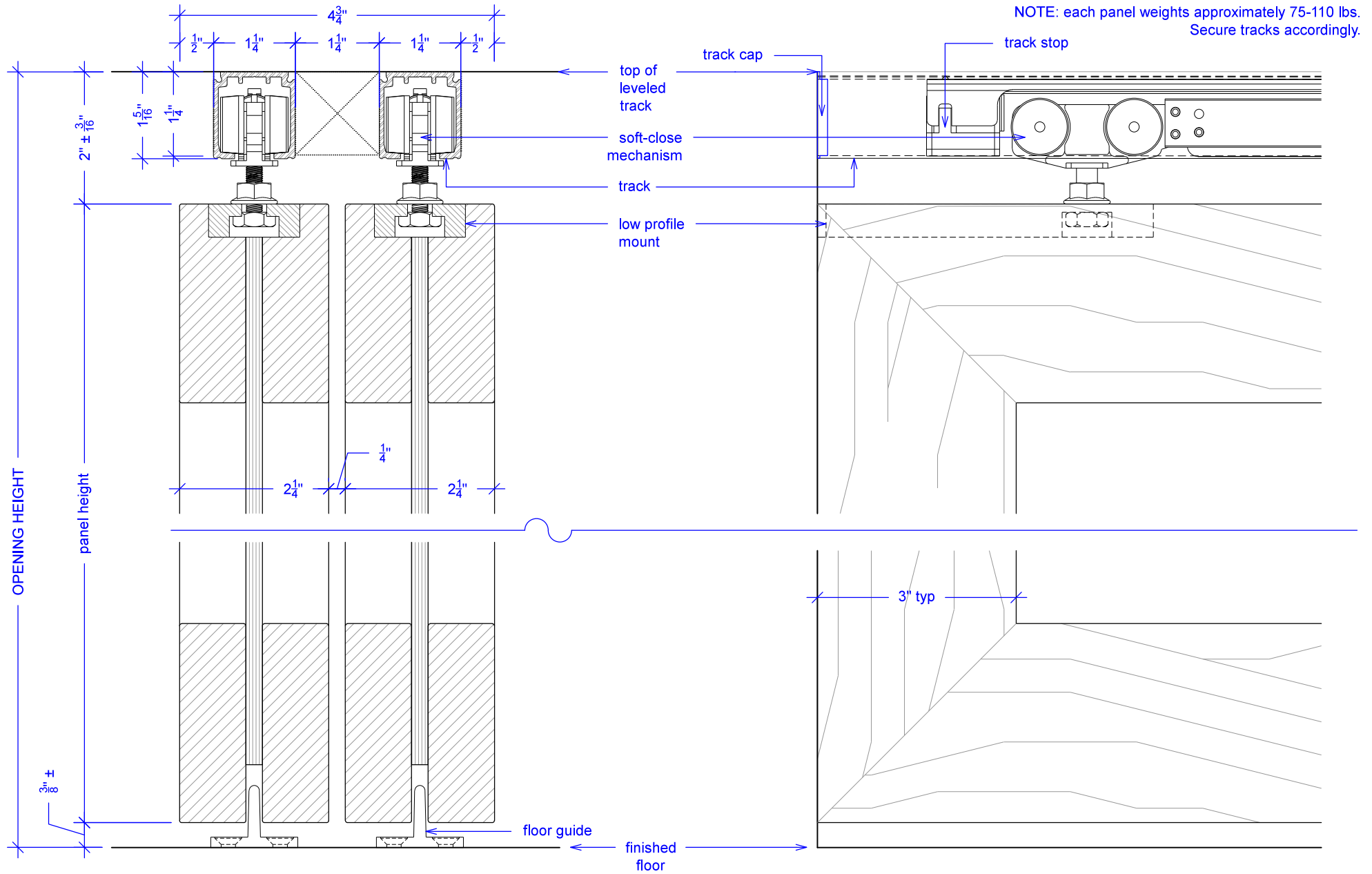


Sliding Bypass w/ Soft-Close, 5 Panels

(SB5-SC)

SECTION

RAYDOOR STANDARD
SYSTEM DRAWINGS
©2020

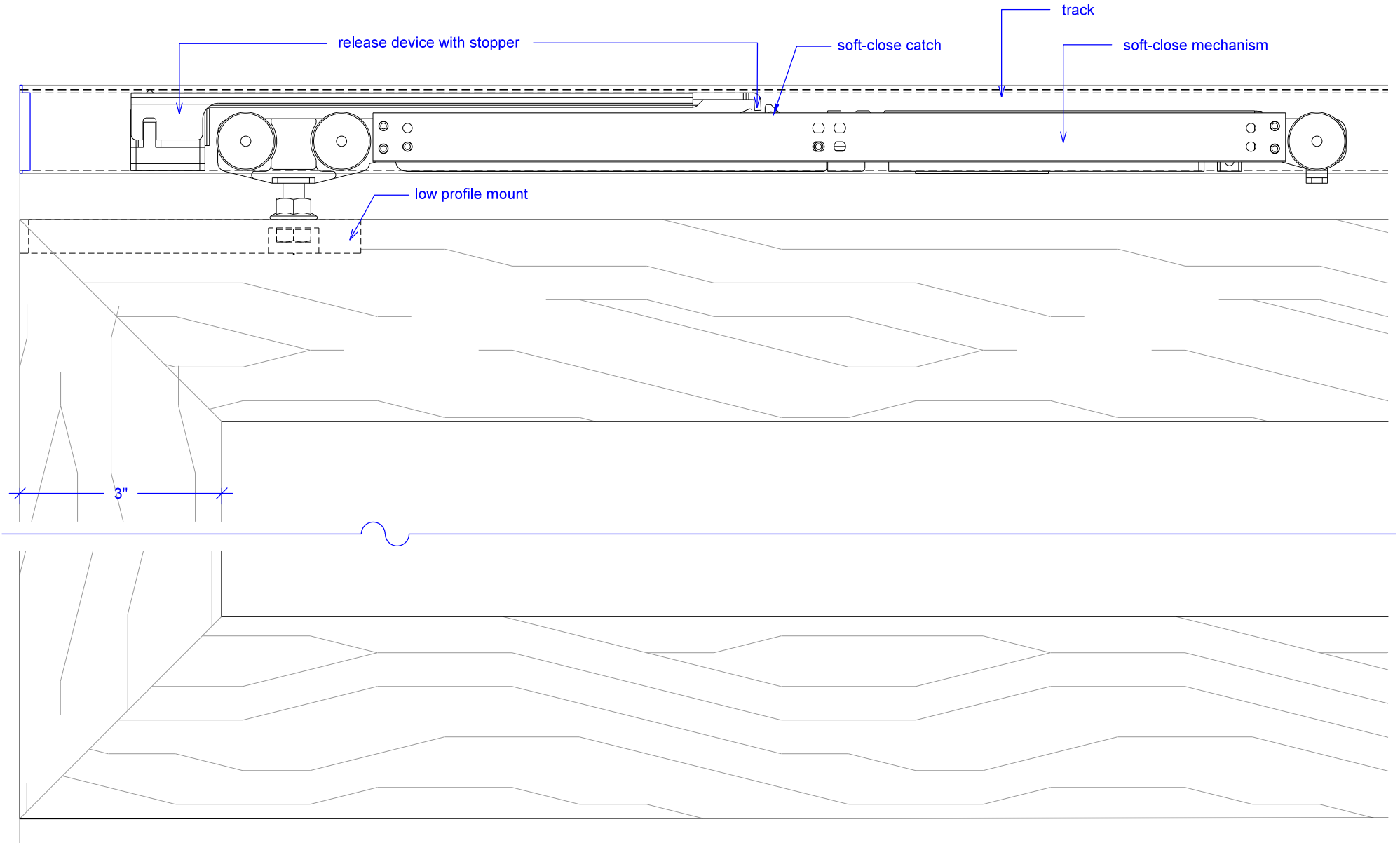


Sliding Bypass w/ Soft-Close, 5 Panels

(SB5-SC)

SOFT-CLOSE HARDWARE

RAYDOOR STANDARD
SYSTEM DRAWINGS
©2020

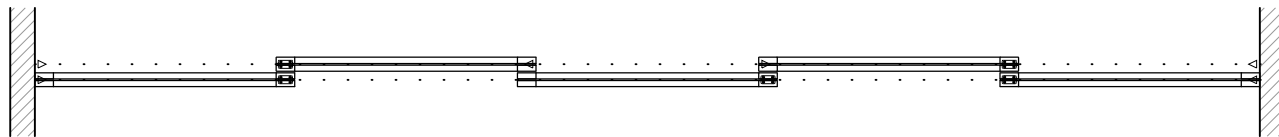
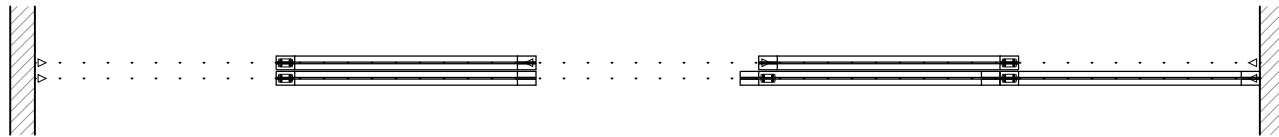
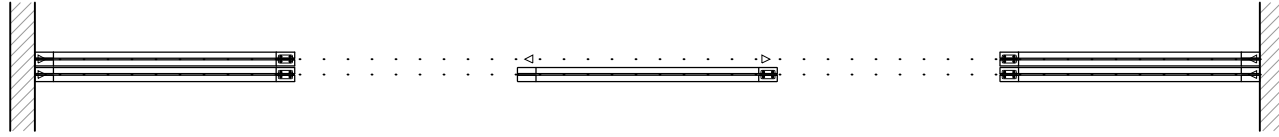


Sliding Bypass w/ Soft-Close, 5 Panels

(SB5-SC)

OPERATION OVERVIEW

RAYDOOR STANDARD
SYSTEM DRAWINGS
©2020



KEY:



floor guide



Stopper / release device