

# Sliding Bypassing, 4 Panels, Symmetrical

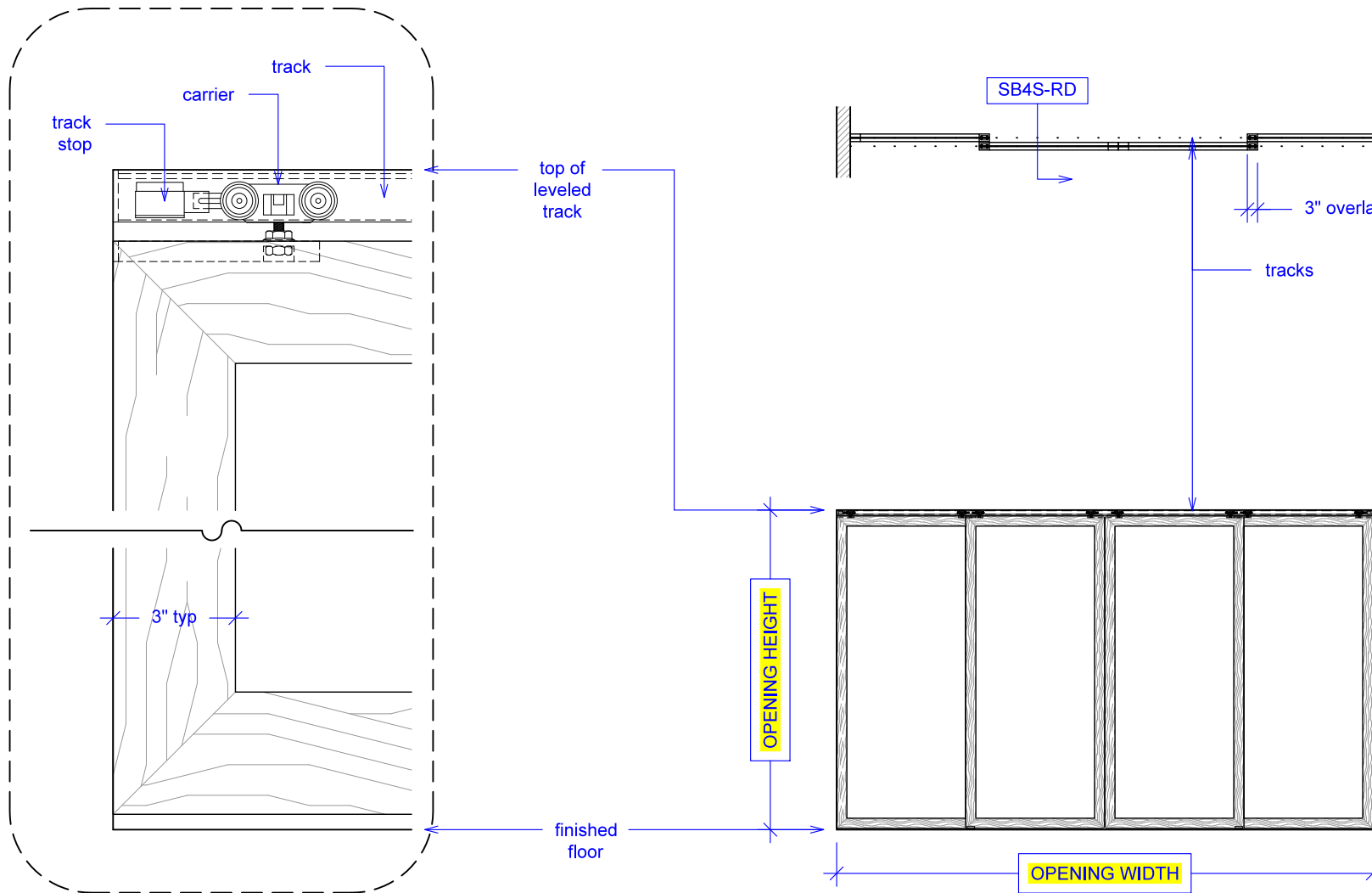
(SB4S-RD)

ELEVATION

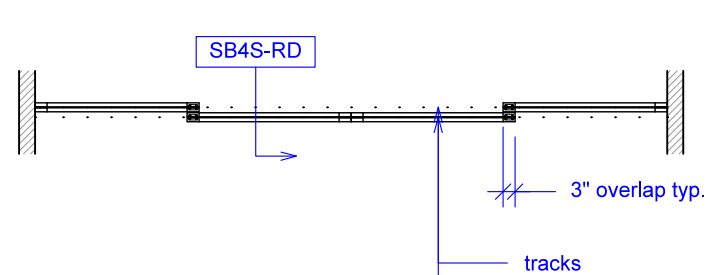
RAYDOOR STANDARD  
SYSTEM DRAWINGS  
©2020



YOUR OPENING HEIGHT = PANEL +  $2\frac{1}{8}$ "  
YOUR OPENING WIDTH = (4 x PANEL) - 6"

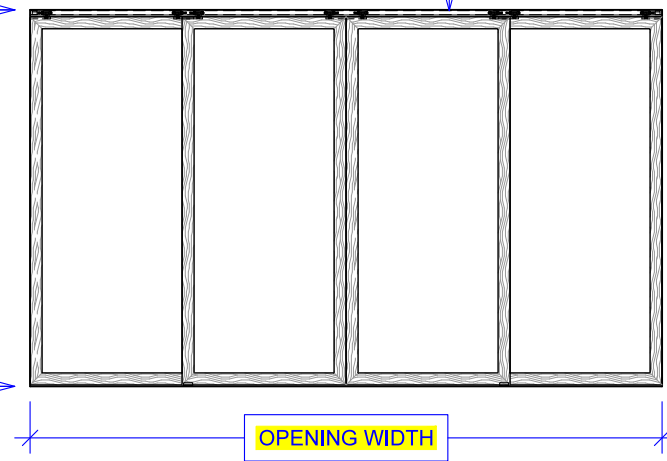


PLAN: open



PLAN: closed

ELEVATION: closed

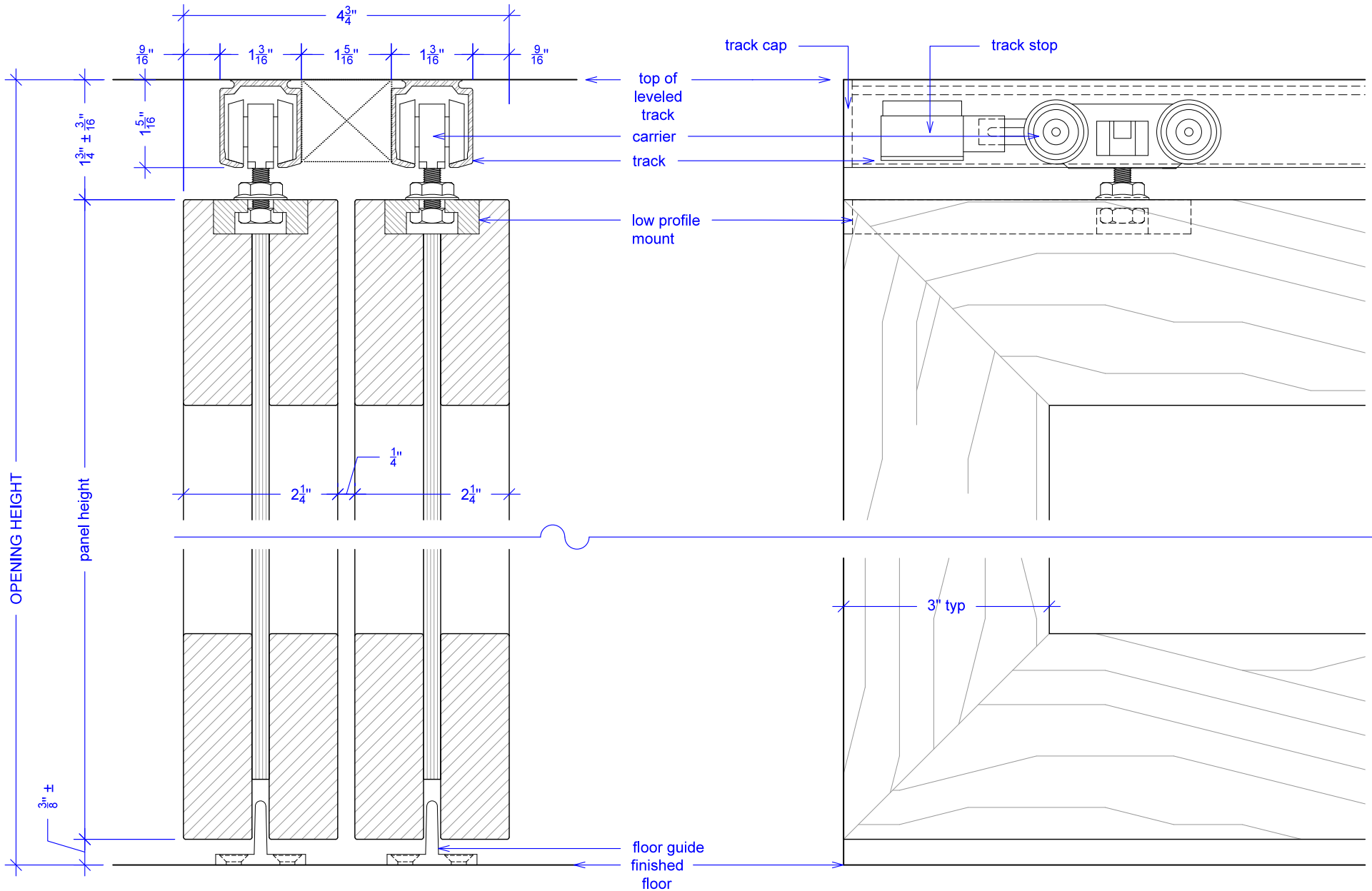


# Sliding Bypassing, 4 Panels, Symmetrical

(SB4S-RD)

SECTION

RAYDOOR STANDARD  
SYSTEM DRAWINGS  
©2020



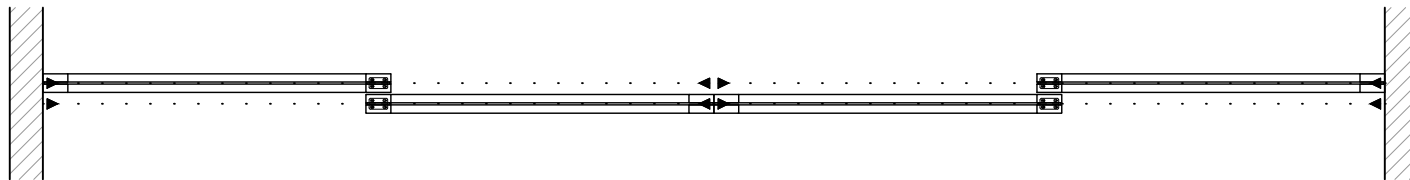
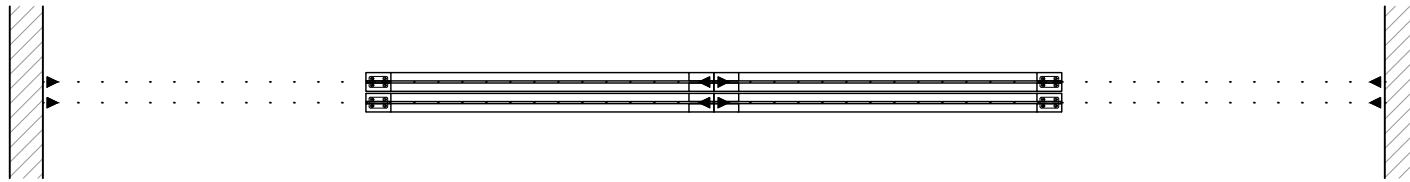
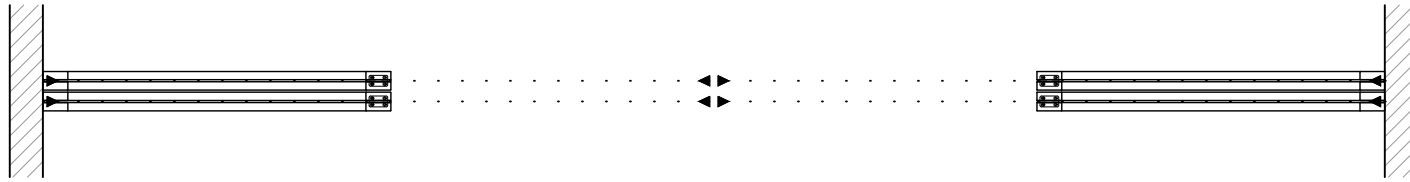
NOTE: each panel weights approximately 75-110 lbs.  
Secure tracks accordingly.

# Sliding Bypassing, 4 Panels, Symmetrical

(SB4S-RD)

## OPERATION OVERVIEW

RAYDOOR STANDARD  
SYSTEM DRAWINGS  
©2020



KEY:



floor guide



track stop