

Sliding Bypassing, 4 Panels

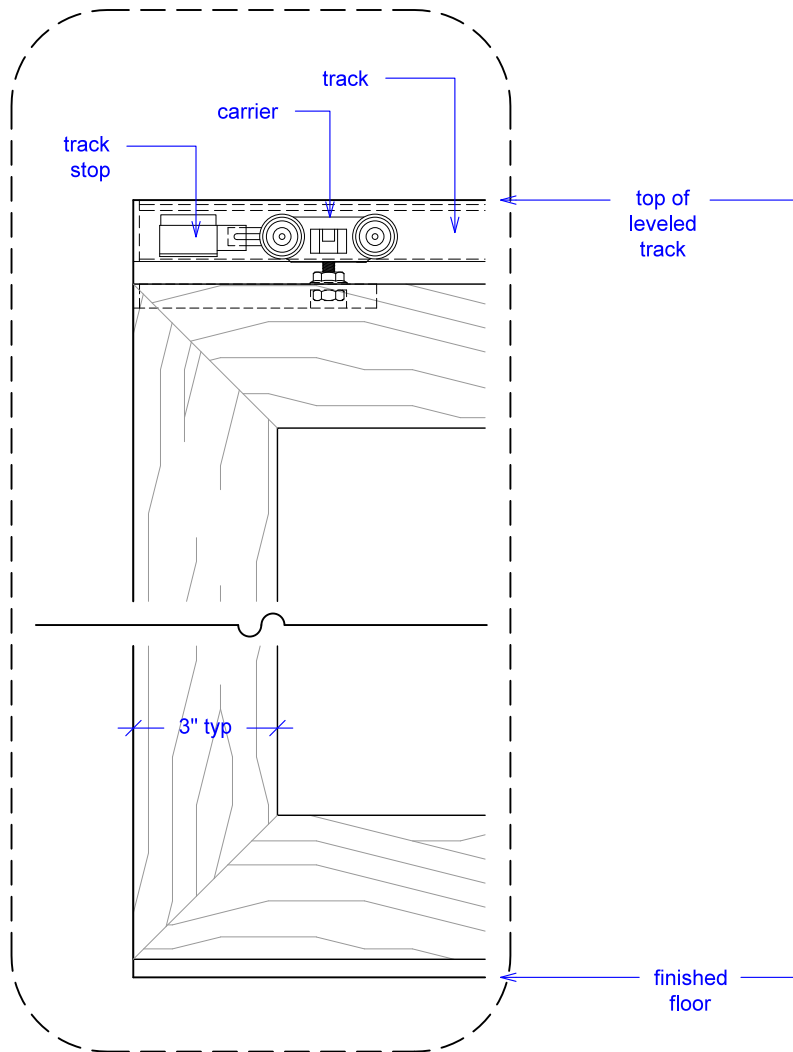
(SB4-RD)

ELEVATION

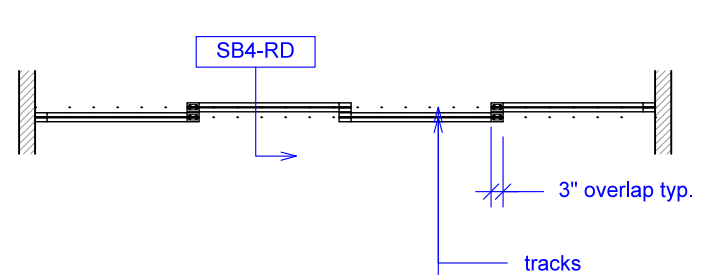
RAYDOOR STANDARD
SYSTEM DRAWINGS
©2020



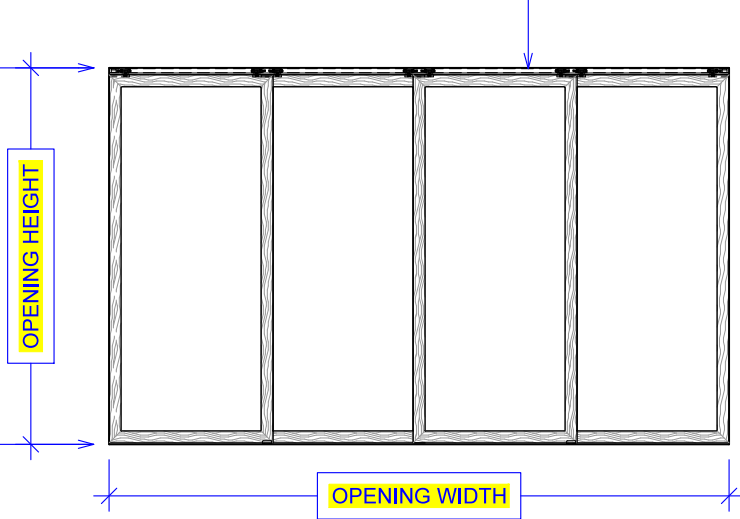
YOUR OPENING HEIGHT = PANEL + $2\frac{1}{8}$ "
YOUR OPENING WIDTH = (4 x PANEL) - 9"



PLAN: open



PLAN: closed



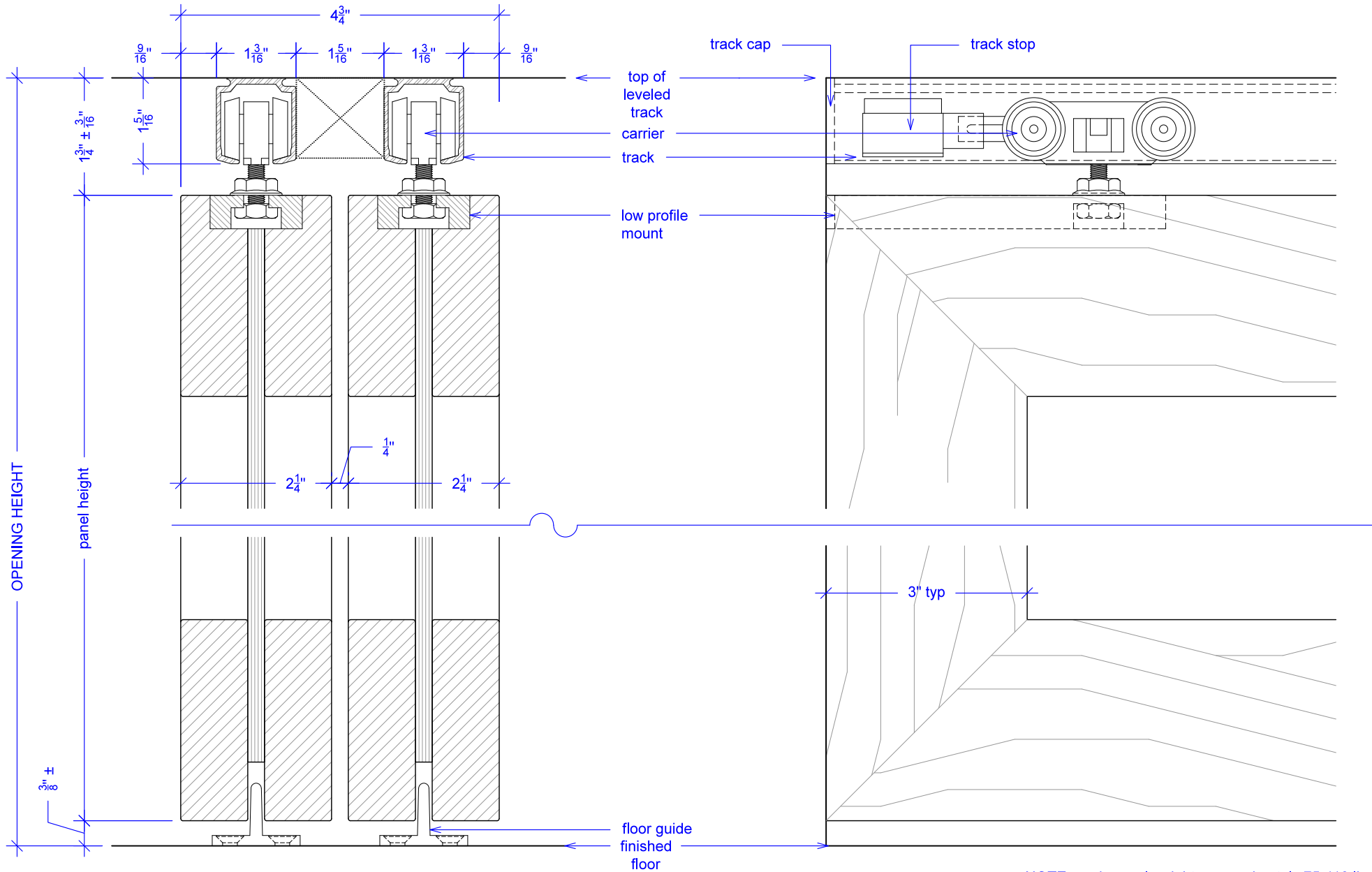
ELEVATION: closed

Sliding Bypassing, 4 Panels

(SB4-RD)

SECTION

RAYDOOR STANDARD
SYSTEM DRAWINGS
©2020



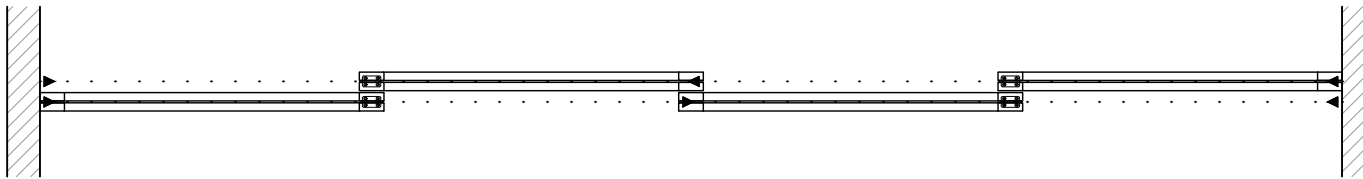
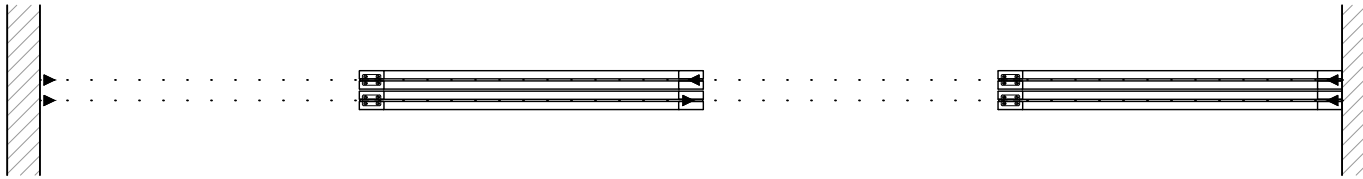
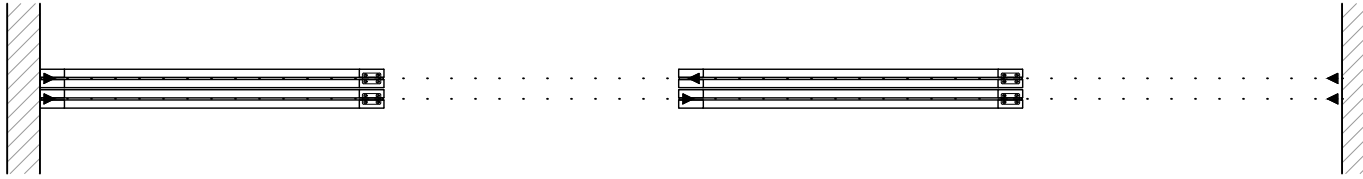
NOTE: each panel weights approximately 75-110 lbs.
Secure tracks accordingly.

Sliding Bypassing, 4 Panels

(SB4-RD)

OPERATION OVERVIEW

RAYDOOR STANDARD
SYSTEM DRAWINGS
©2020



KEY:



floor guide



track stop