

# Sliding Bypassing, 2 Panels

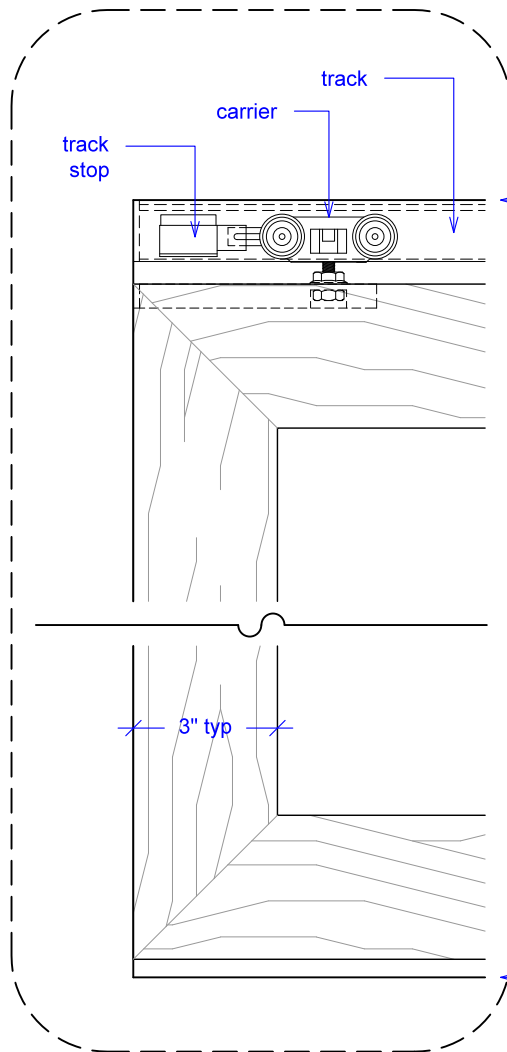
(SB2-RD)

## ELEVATION

RAYDOOR STANDARD  
SYSTEM DRAWINGS  
©2020

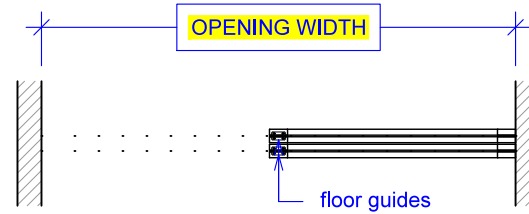


YOUR OPENING HEIGHT = PANEL +  $2\frac{1}{8}$ "  
YOUR OPENING WIDTH = (2 x PANEL) - 3"

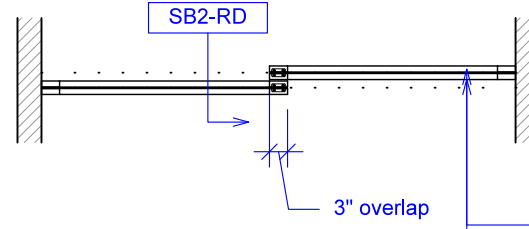


top of leveled track

finished floor

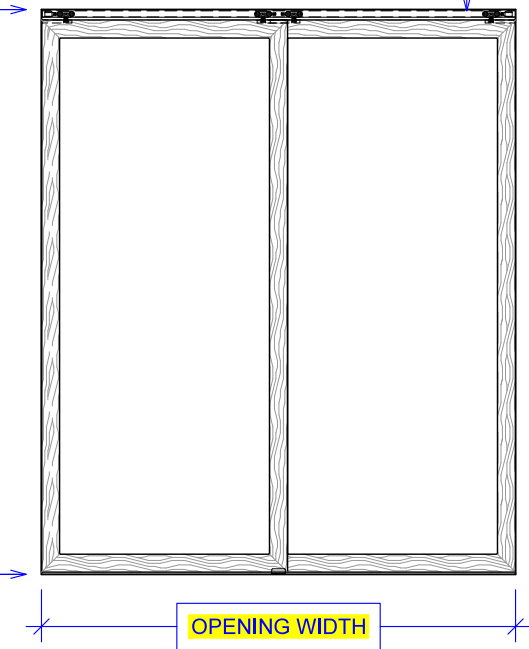


PLAN: open



PLAN: closed

ELEVATION: closed

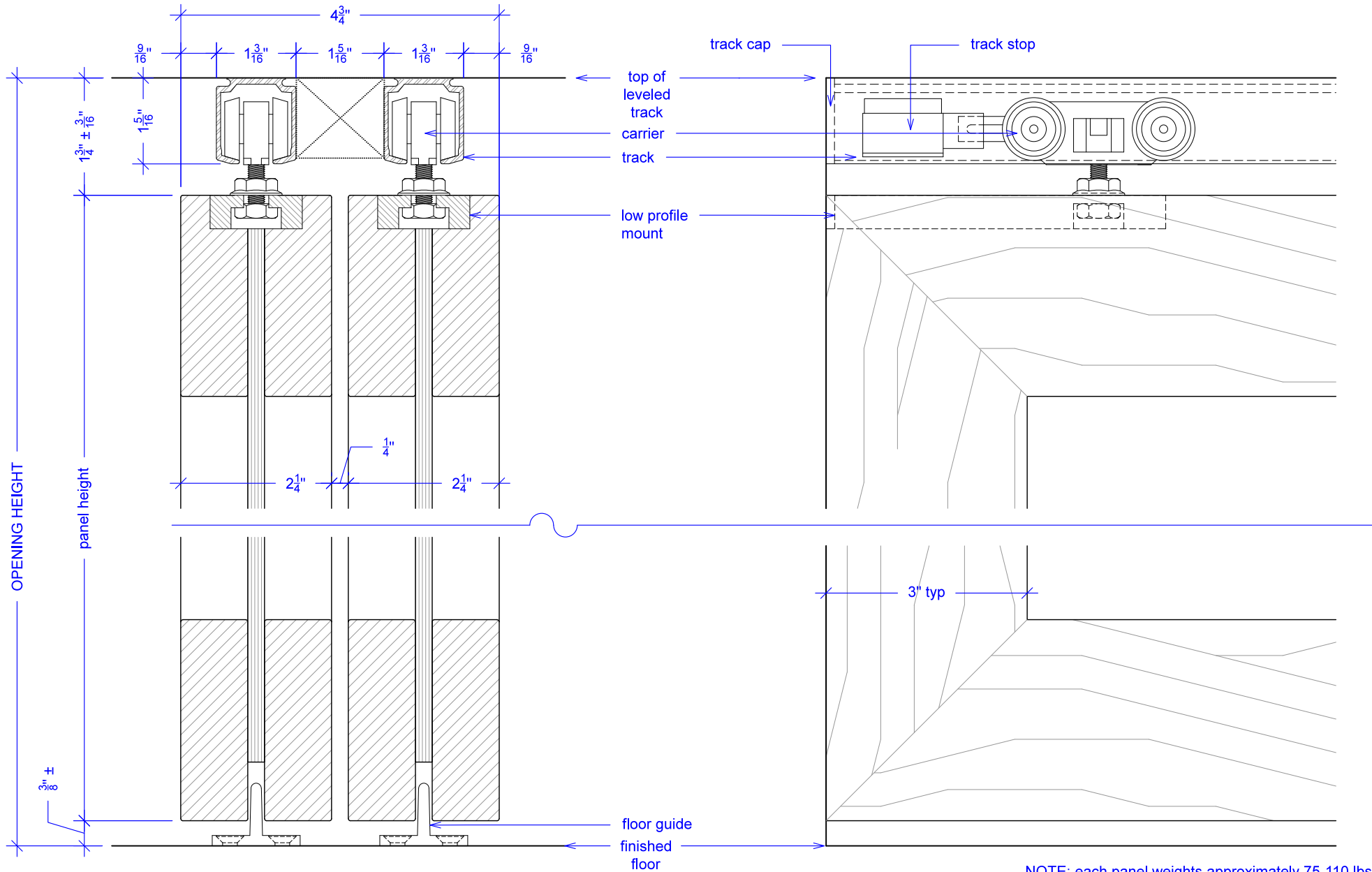


# Sliding Bypassing, 2 Panels

(SB2-RD)

## SECTION

RAYDOOR STANDARD  
SYSTEM DRAWINGS  
©2020



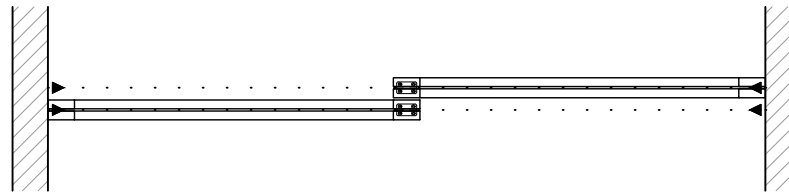
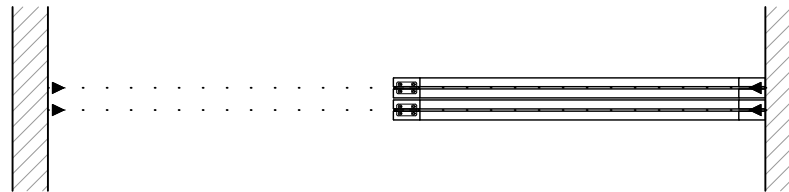
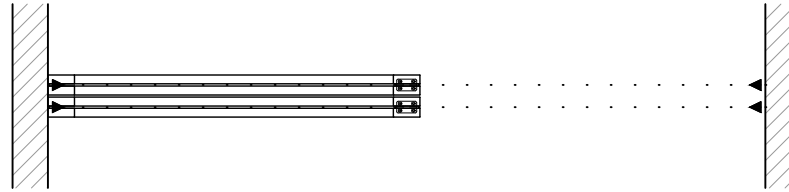
NOTE: each panel weights approximately 75-110 lbs.  
Secure tracks accordingly.

# Sliding Bypassing, 2 Panels

(SB2-RD)

## OPERATION OVERVIEW

RAYDOOR STANDARD  
SYSTEM DRAWINGS  
©2020



KEY:



floor guide



track stop