

# Sliding Wing Wall w/ Soft-Close, 6 Panels, Symmetrical

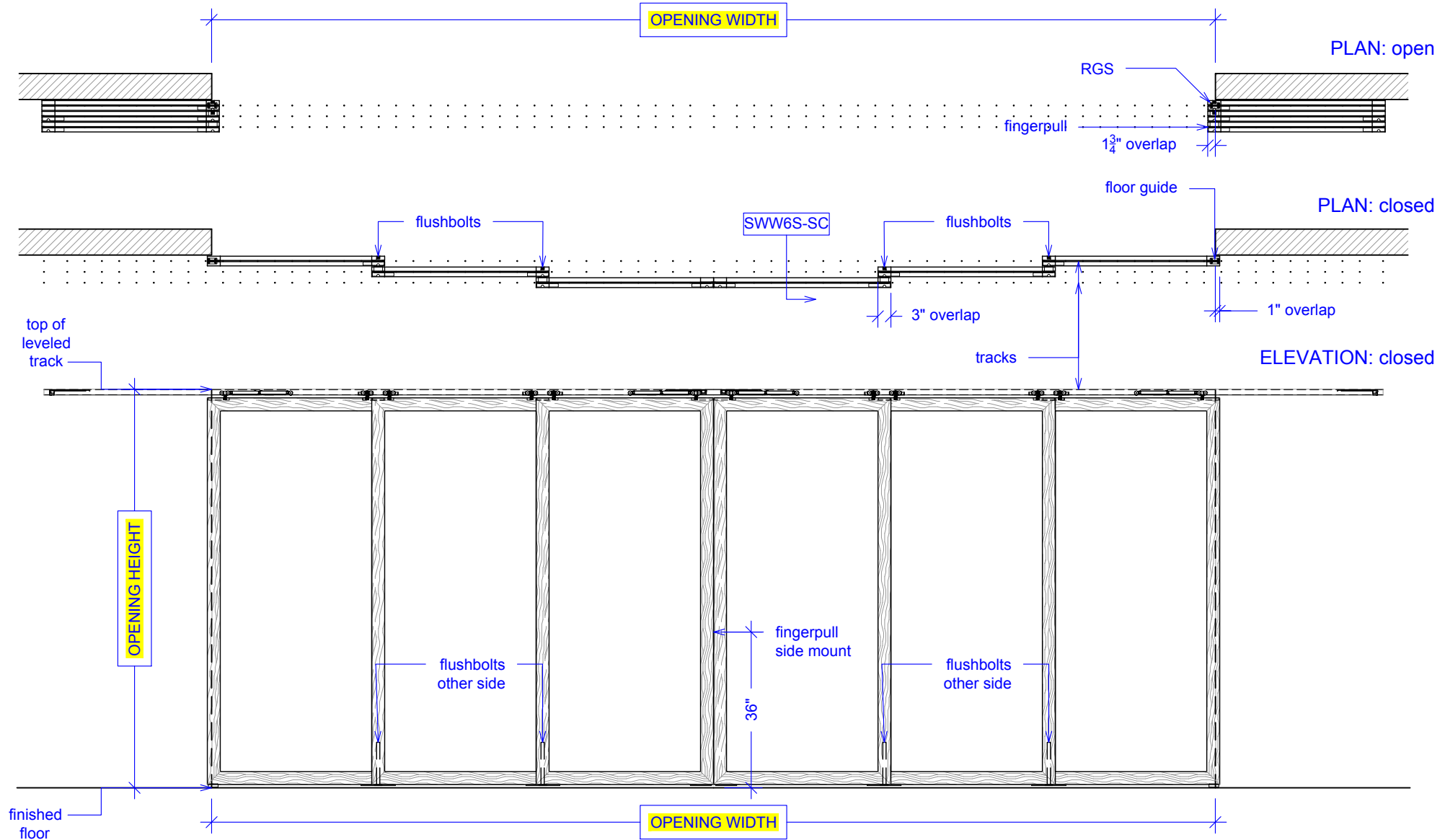
(SWW6S-SC)

ELEVATION

RAYDOOR STANDARD  
SYSTEM DRAWINGS  
©2020



YOUR OPENING HEIGHT = PANEL + 2<sup>3</sup>/<sub>4</sub>"  
YOUR OPENING WIDTH = (6 x PANEL) - 14"



# Sliding Wing Wall w/ Soft-Close, 6 Panels, Symmetrical

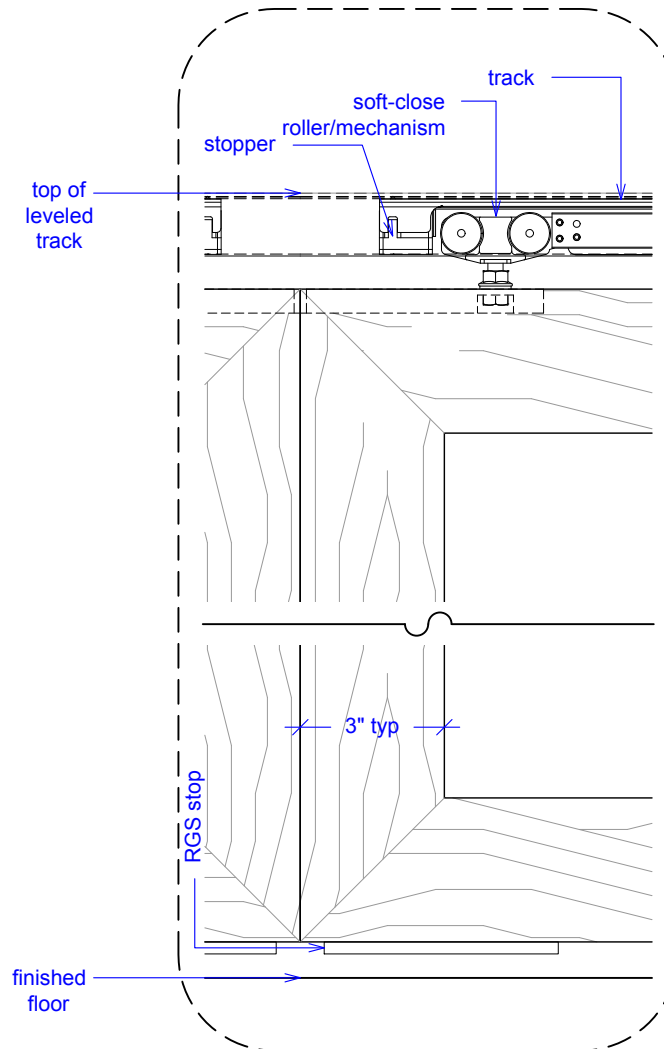
(SWW6S-SC)

## ELEVATION DETAILS

RAYDOOR STANDARD  
SYSTEM DRAWINGS  
©2020



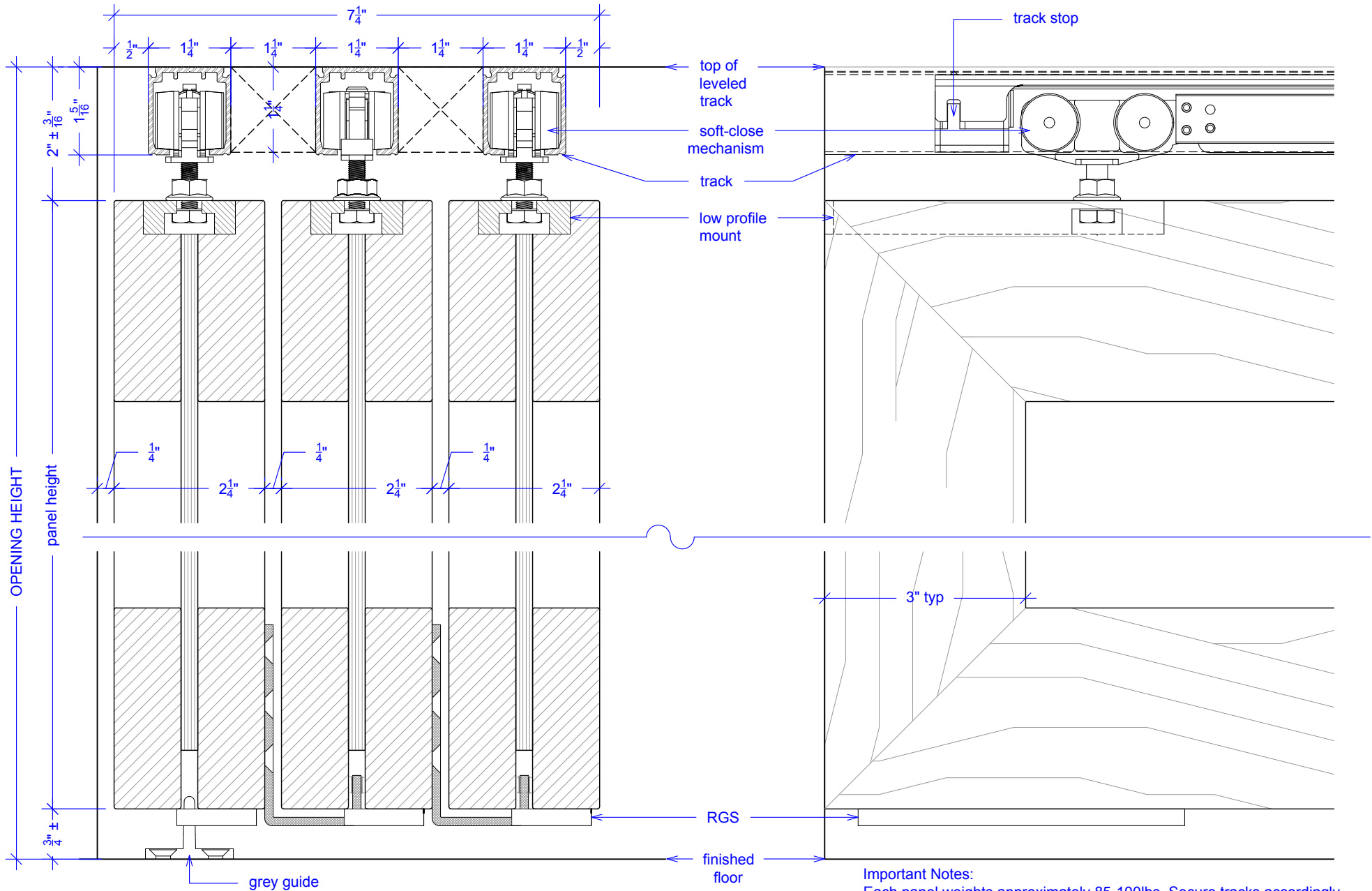
ELEVATION: details



# Sliding Wing Wall w/ Soft-Close, 6 Panels, Symmetrical

(SWW6S-SC)  
SECTION

RAYDOOR STANDARD  
SYSTEM DRAWINGS  
©2020



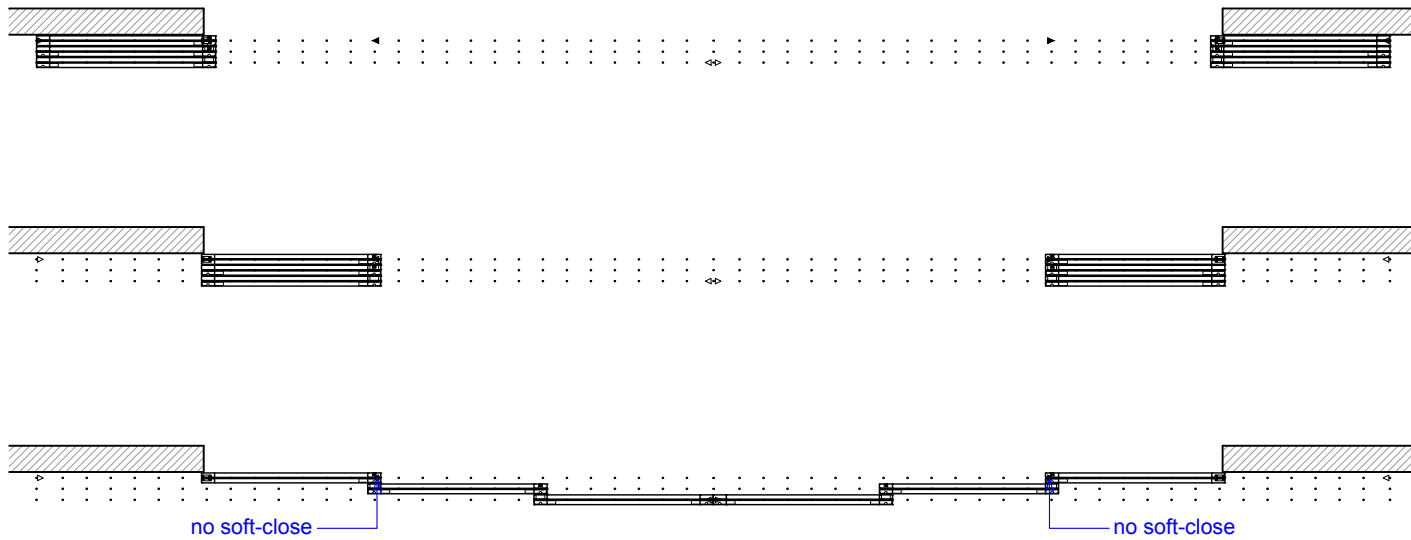
Important Notes:  
Each panel weights approximately 85-100lbs. Secure tracks accordingly.

# Sliding Wing Wall w/ Soft-Close, 6 Panels, Symmetrical

(SWW6S-SC)

## OPERATION OVERVIEW

RAYDOOR STANDARD  
SYSTEM DRAWINGS  
©2020



### KEY:

- ▷ stopper / release device
- ▶ track stop
- RGS hook
- ┌ RGS stop
- flushbolt