

Sliding Wall w/ Soft-Close, 5 Panels, Symmetrical

(SW5S-SC)

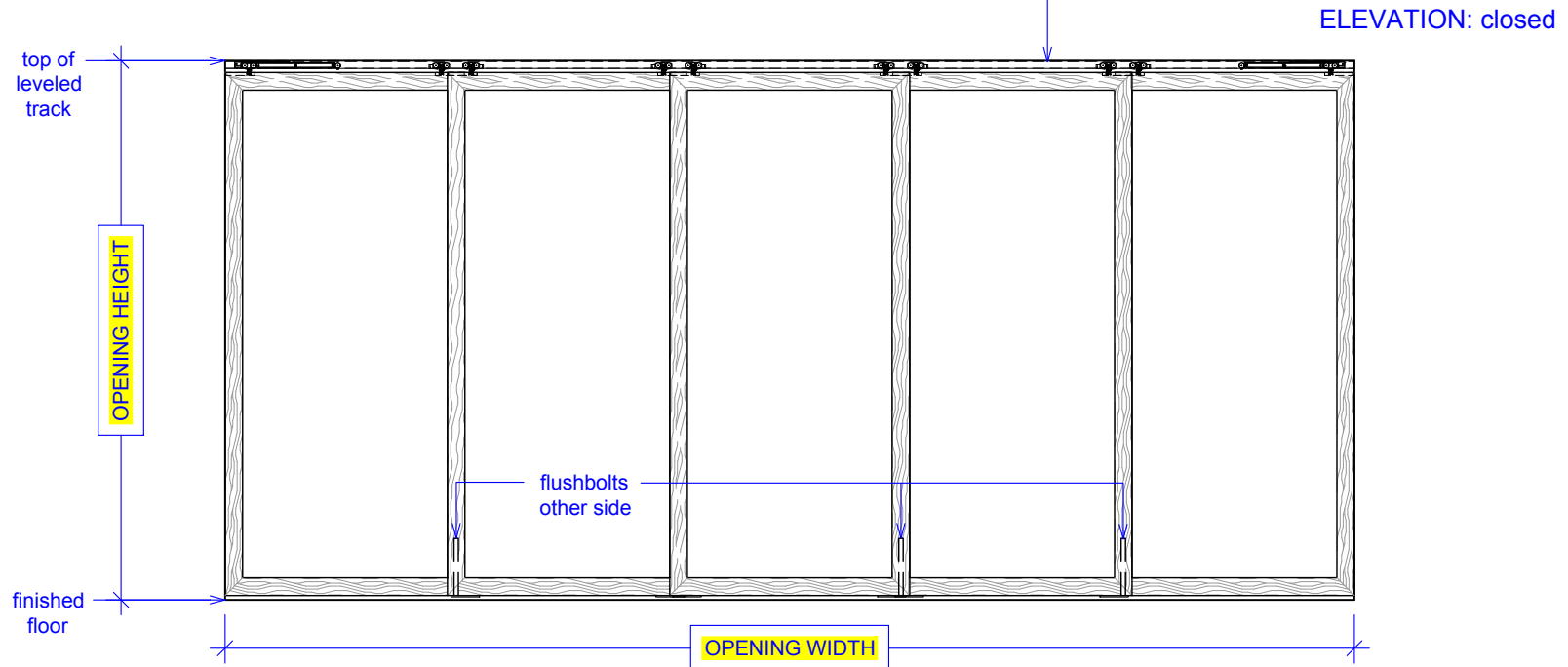
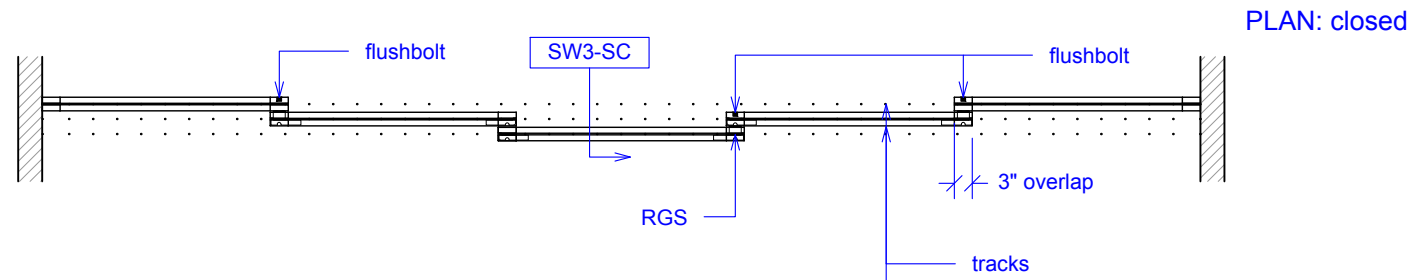
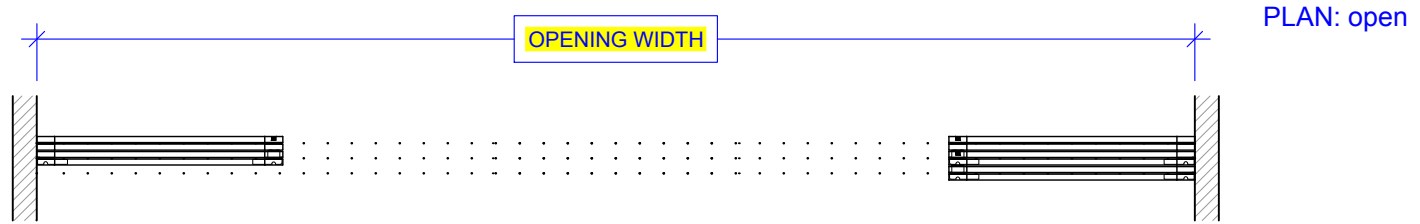
ELEVATION

RAYDOOR STANDARD
SYSTEM DRAWINGS
©2020



YOUR OPENING HEIGHT
= PANEL + 2 $\frac{3}{4}$ "

YOUR OPENING WIDTH
= (5 x PANEL) - 12"



Sliding Wall w/ Soft-Close, 5 Panels, Symmetrical

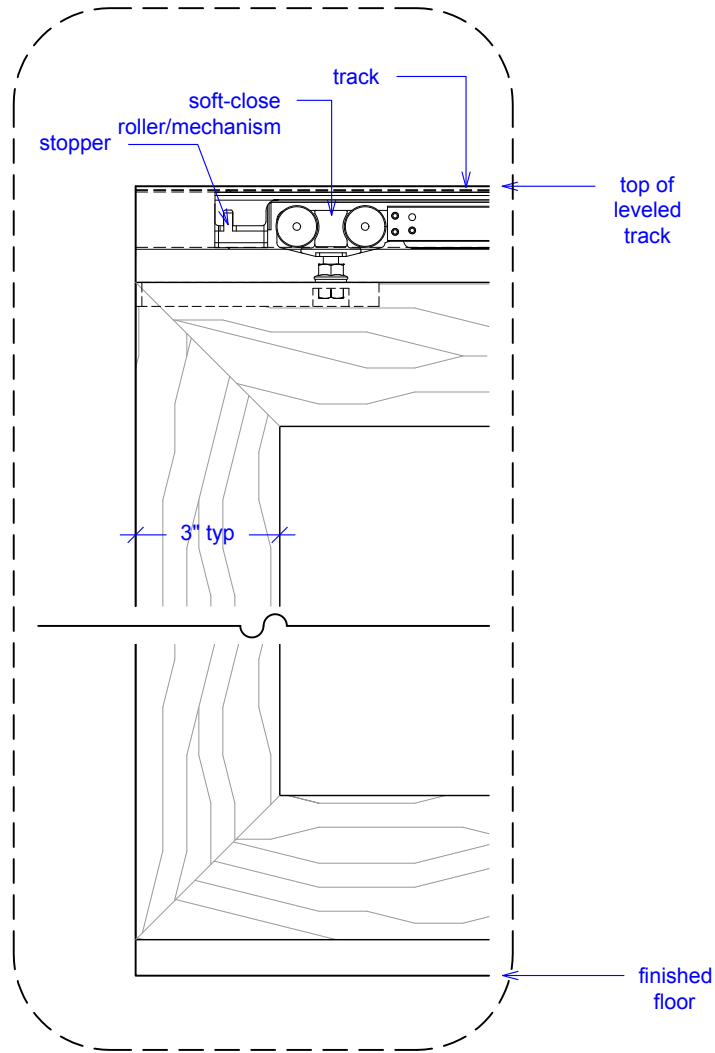
(SW5S-SC)

ELEVATION DETAILS

RAYDOOR STANDARD
SYSTEM DRAWINGS
©2020



ELEVATION: details

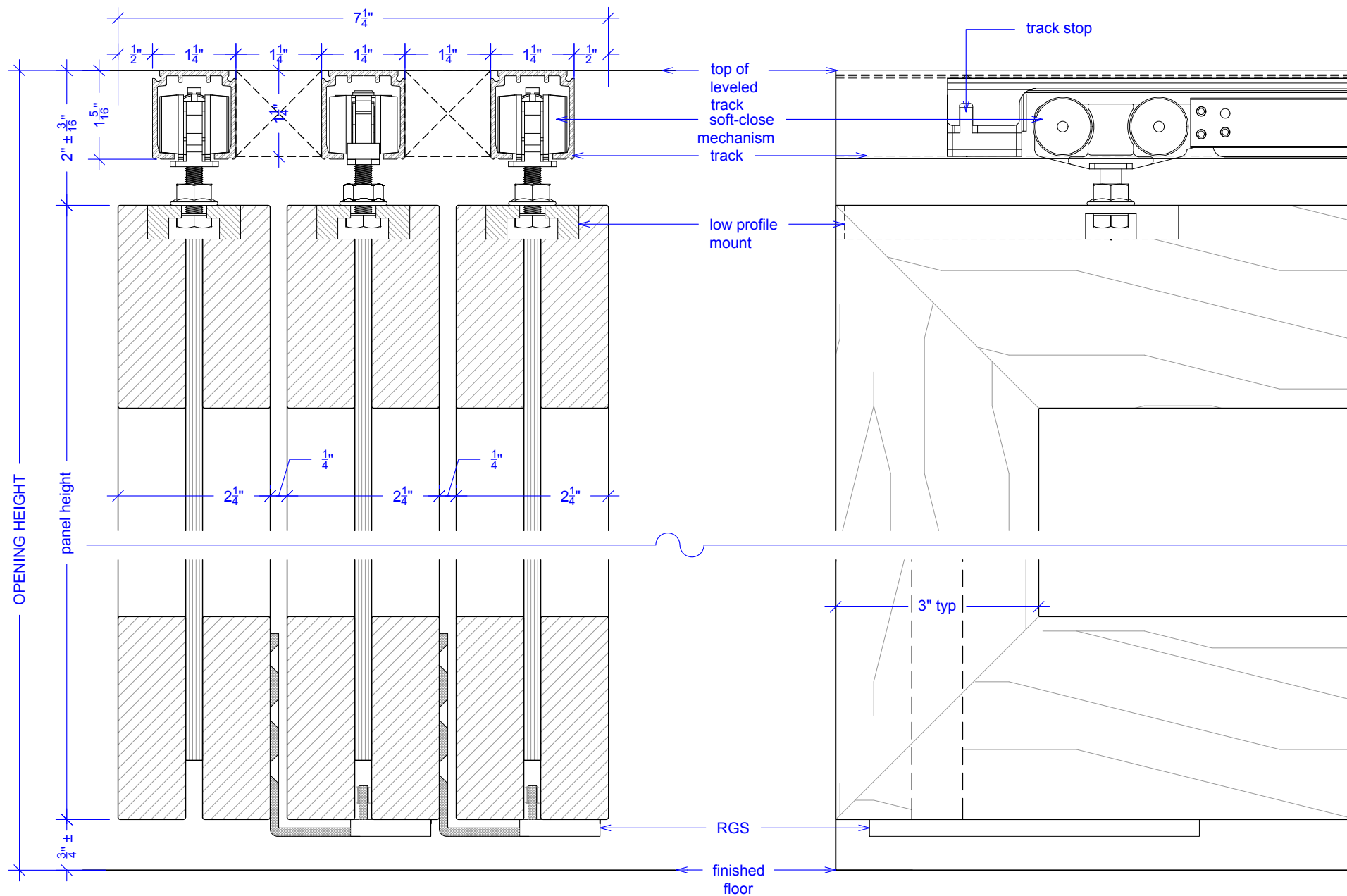


Sliding Wall w/ Soft-Close, 5 Panels, Symmetrical

(SW5S-SC)

SECTION

RAYDOOR STANDARD
SYSTEM DRAWINGS
©2020



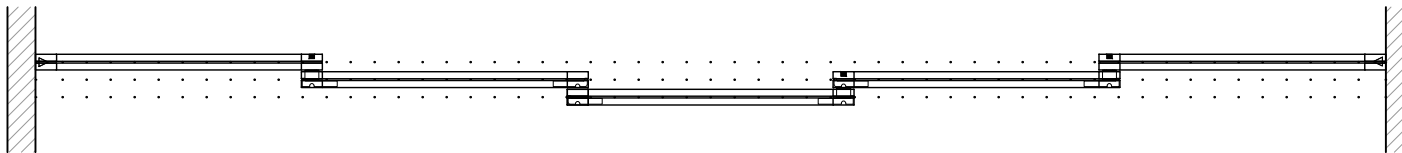
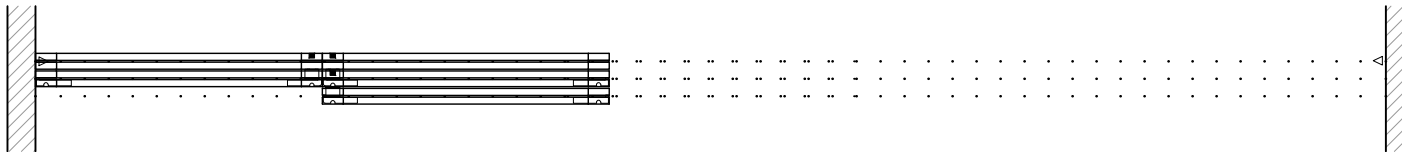
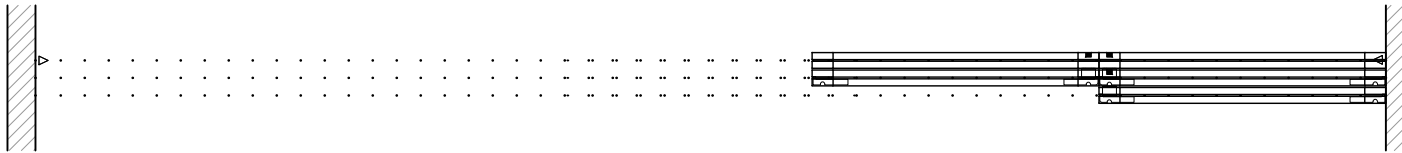
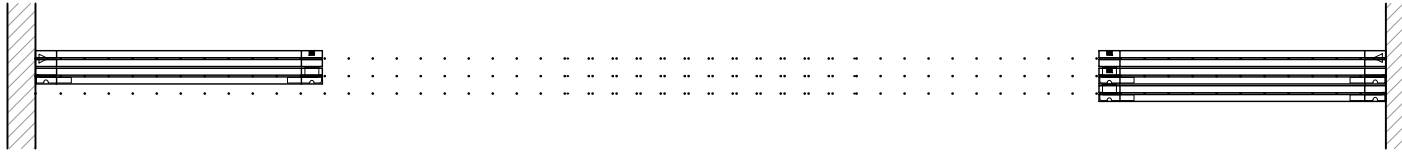
Important Notes:
Each panel weights approximately 75-110 lbs. Secure tracks accordingly.

Sliding Wall w/ Soft-Close, 5 Panels, Symmetrical

(SW5S-SC)

OPERATION OVERVIEW

RAYDOOR STANDARD
SYSTEM DRAWINGS
©2020



KEY:

▷ stopper / release device

□ RGS hook

┌ RGS stop

■ flushbolt