

# Sliding w/ Soft Close, 2 Panels, Symmetrical, Wall Mount

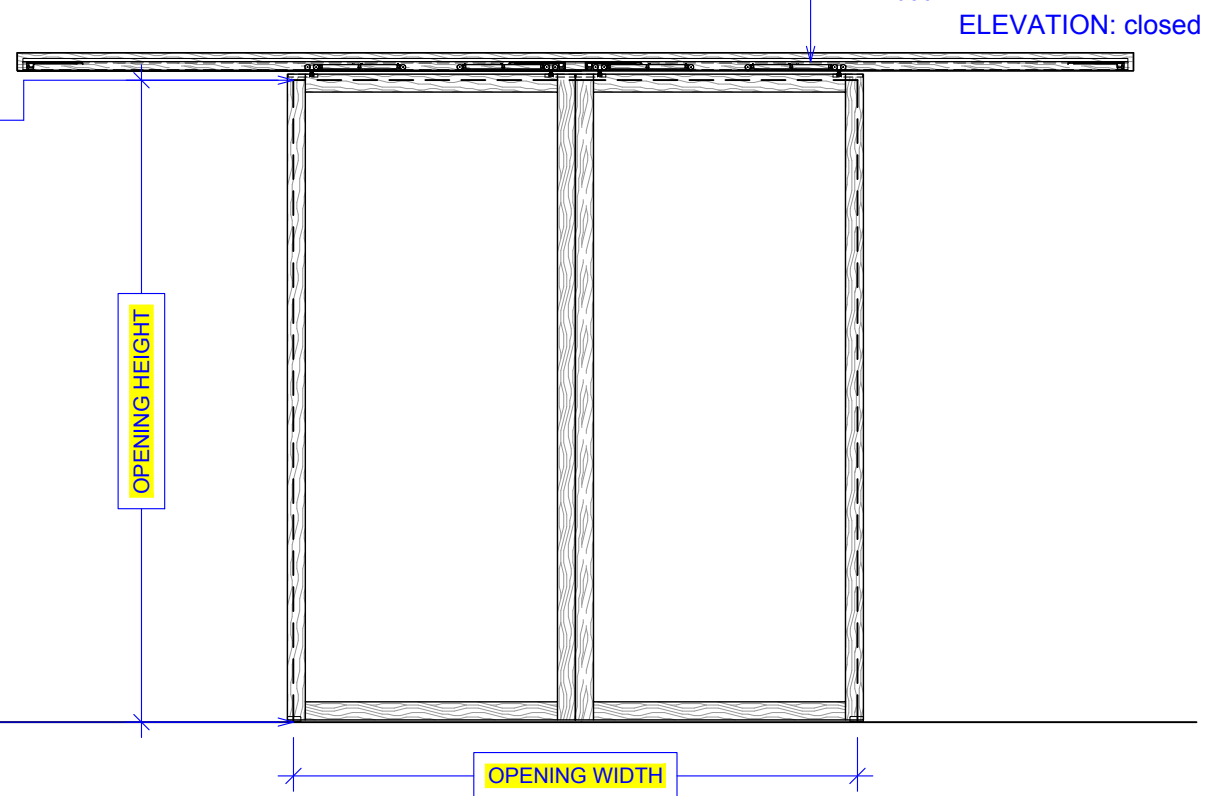
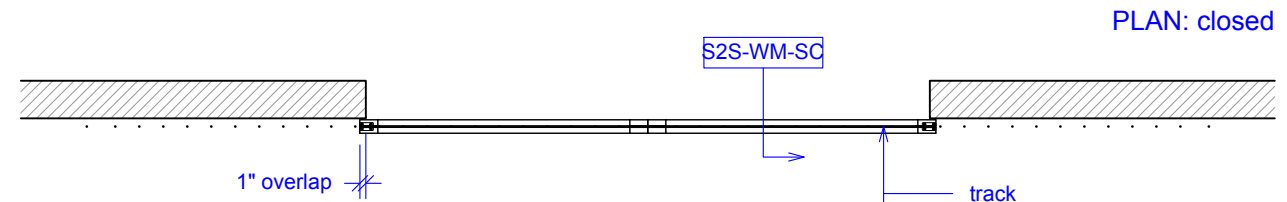
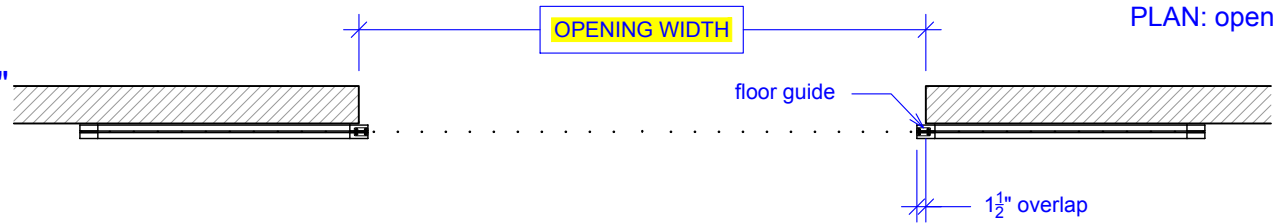
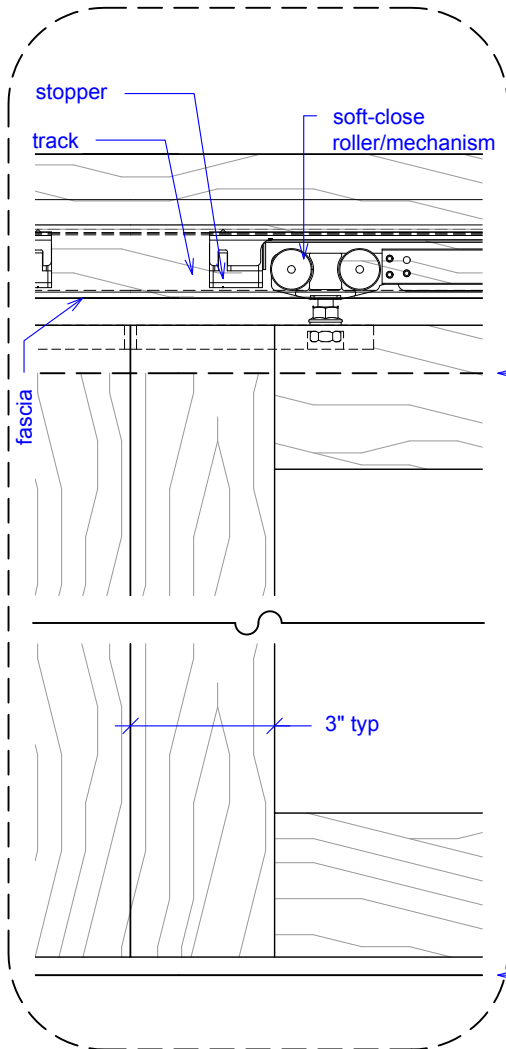
(S2S-WM-SC)

ELEVATION

RAYDOOR STANDARD  
SYSTEM DRAWINGS  
©2021



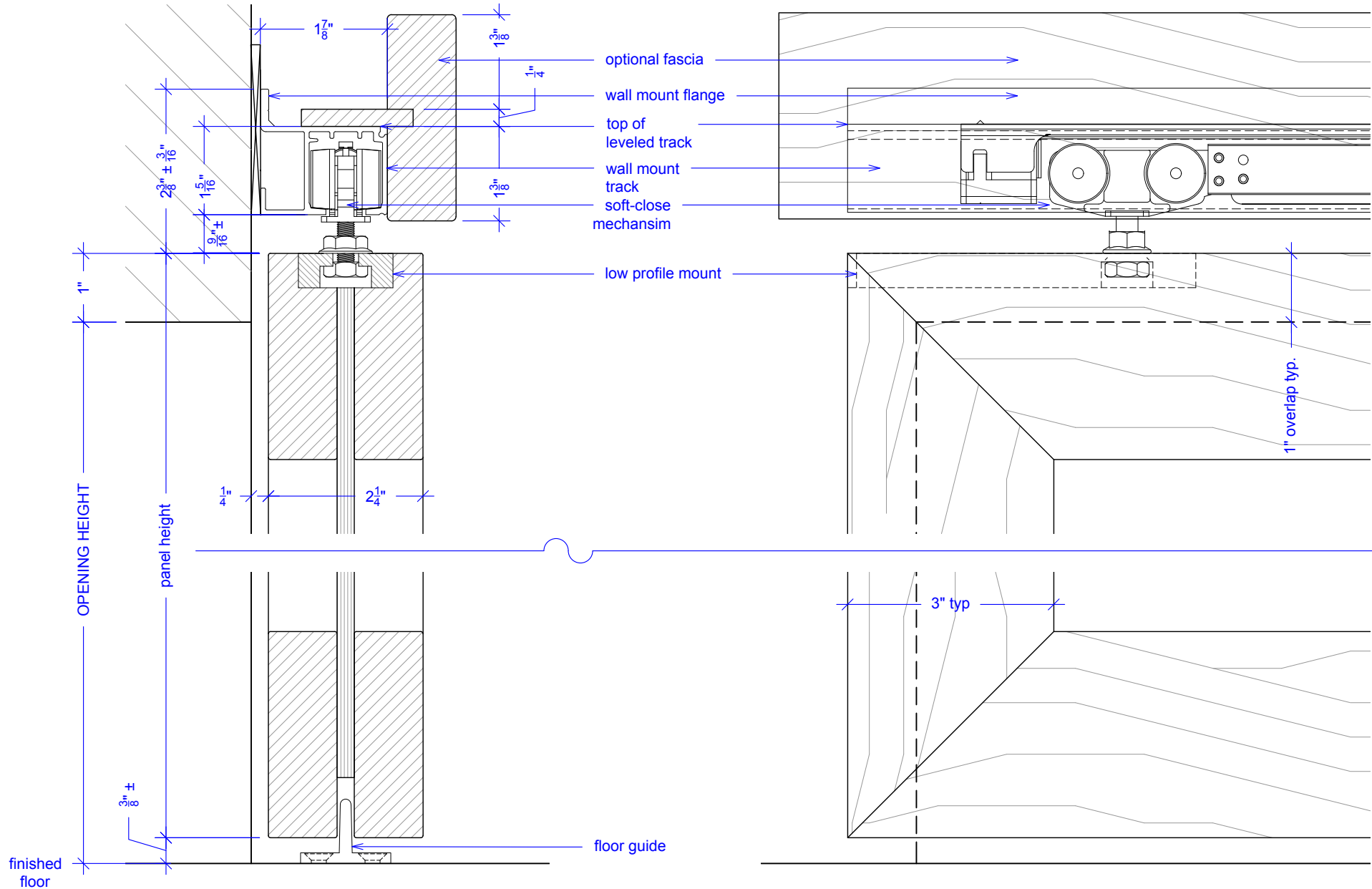
YOUR OPENING HEIGHT = PANEL -  $\frac{5}{8}$ "  
YOUR OPENING WIDTH = (2 x PANEL) - 2"



# Sliding w/ Soft Close, 2 Panels, Symmetrical, Wall Mount

(S2S-WM-SC)  
SECTION

RAYDOOR STANDARD  
SYSTEM DRAWINGS  
©2021



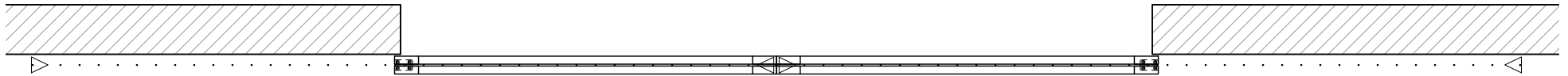
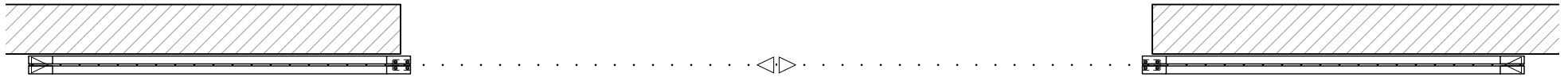
NOTE: each panel weights approximately 75-110 lbs.  
Secure tracks accordingly.

# Sliding w/ Soft Close, 2 Panels, Symmetrical, Wall Mount

(S2S-WM-SC)

## OPERATION OVERVIEW

RAYDOOR STANDARD  
SYSTEM DRAWINGS  
©2021



KEY:



floor guide



track stop