

Sliding, 2 Panels, Symmetrical, Wall Mount

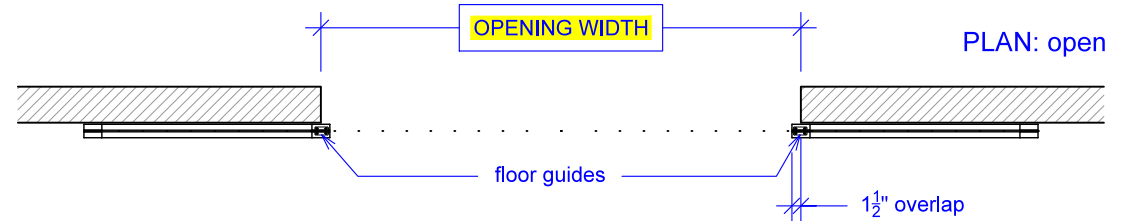
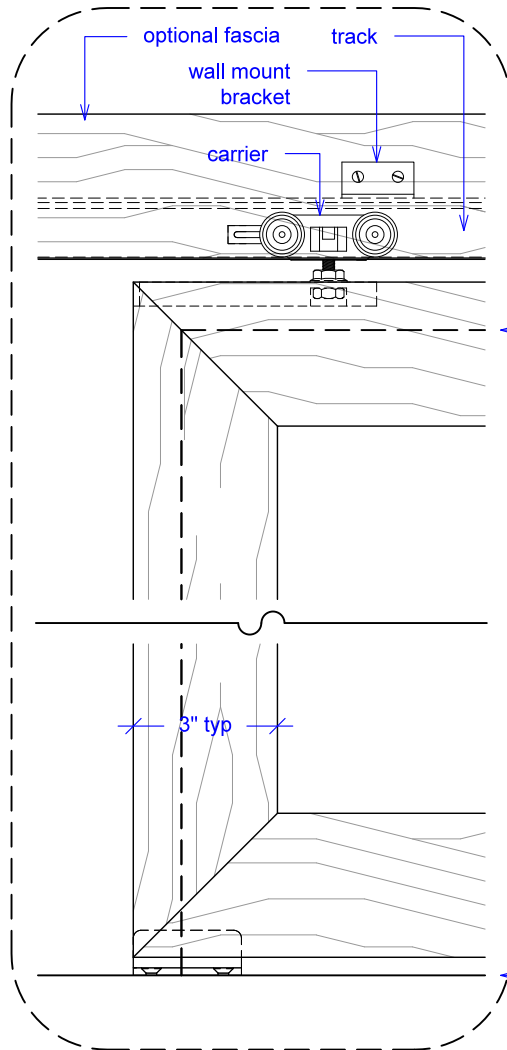
(S2S-WM-RD)

ELEVATION

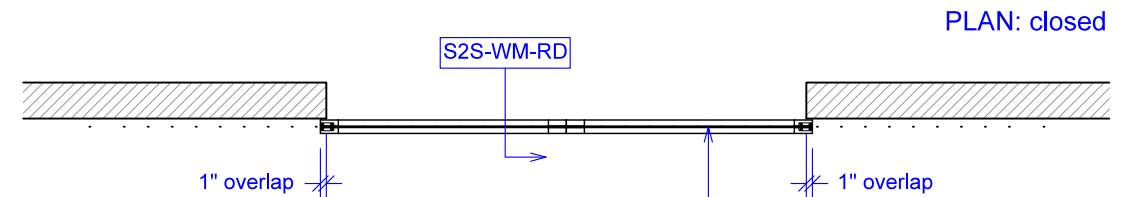
RAYDOOR STANDARD
SYSTEM DRAWINGS
©2020



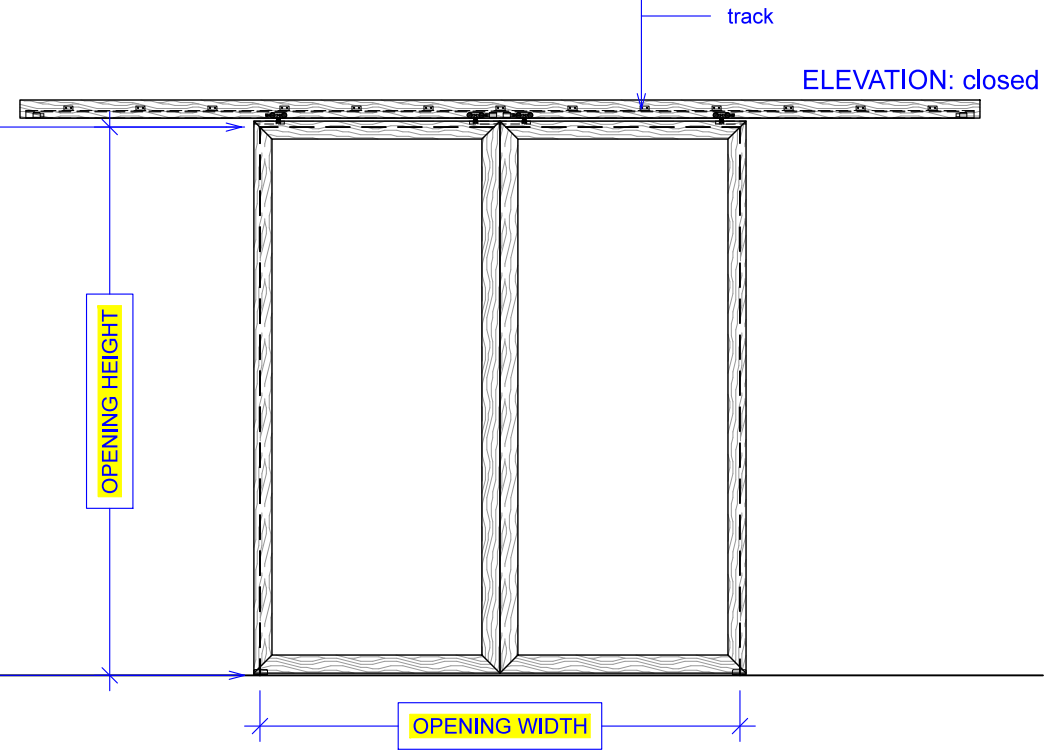
YOUR OPENING HEIGHT = PANEL - $\frac{5}{8}$ "
YOUR OPENING WIDTH = (2 x PANEL) - 2"



PLAN: open



PLAN: closed



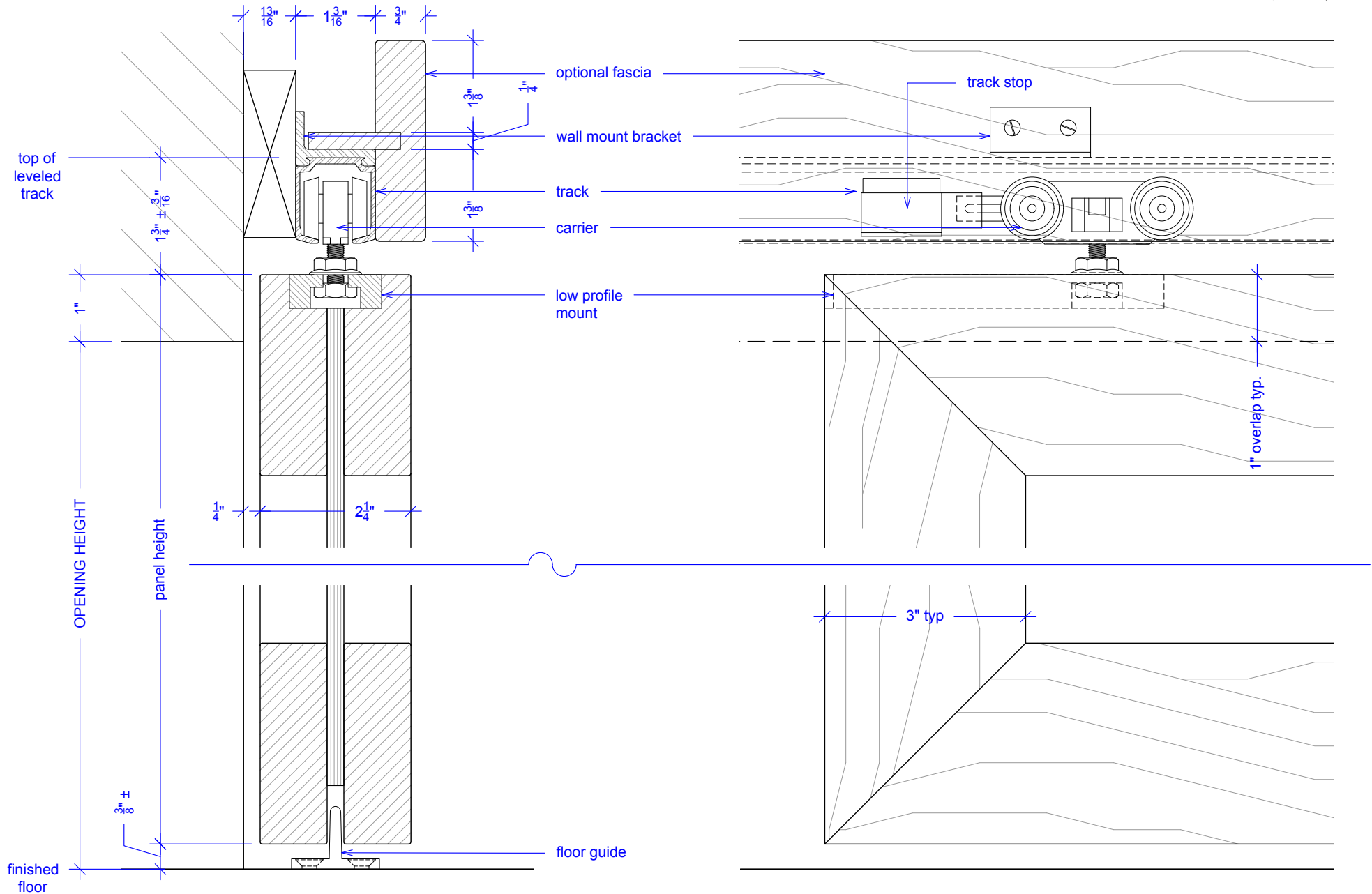
ELEVATION: closed

Sliding, 2 Panels, Symmetrical, Wall Mount

(S2S-WM-RD)

SECTION

RAYDOOR STANDARD
SYSTEM DRAWINGS
©2020



NOTE: each panel weights approximately 75-110 lbs.
Secure tracks accordingly.

Sliding, 2 Panels, Symmetrical, Wall Mount

(S2S-WM-RD)

OPERATION OVERVIEW

RAYDOOR STANDARD
SYSTEM DRAWINGS
©2020



KEY:



floor guide



track stop