

Sliding, 2 Panels, Symmetrical

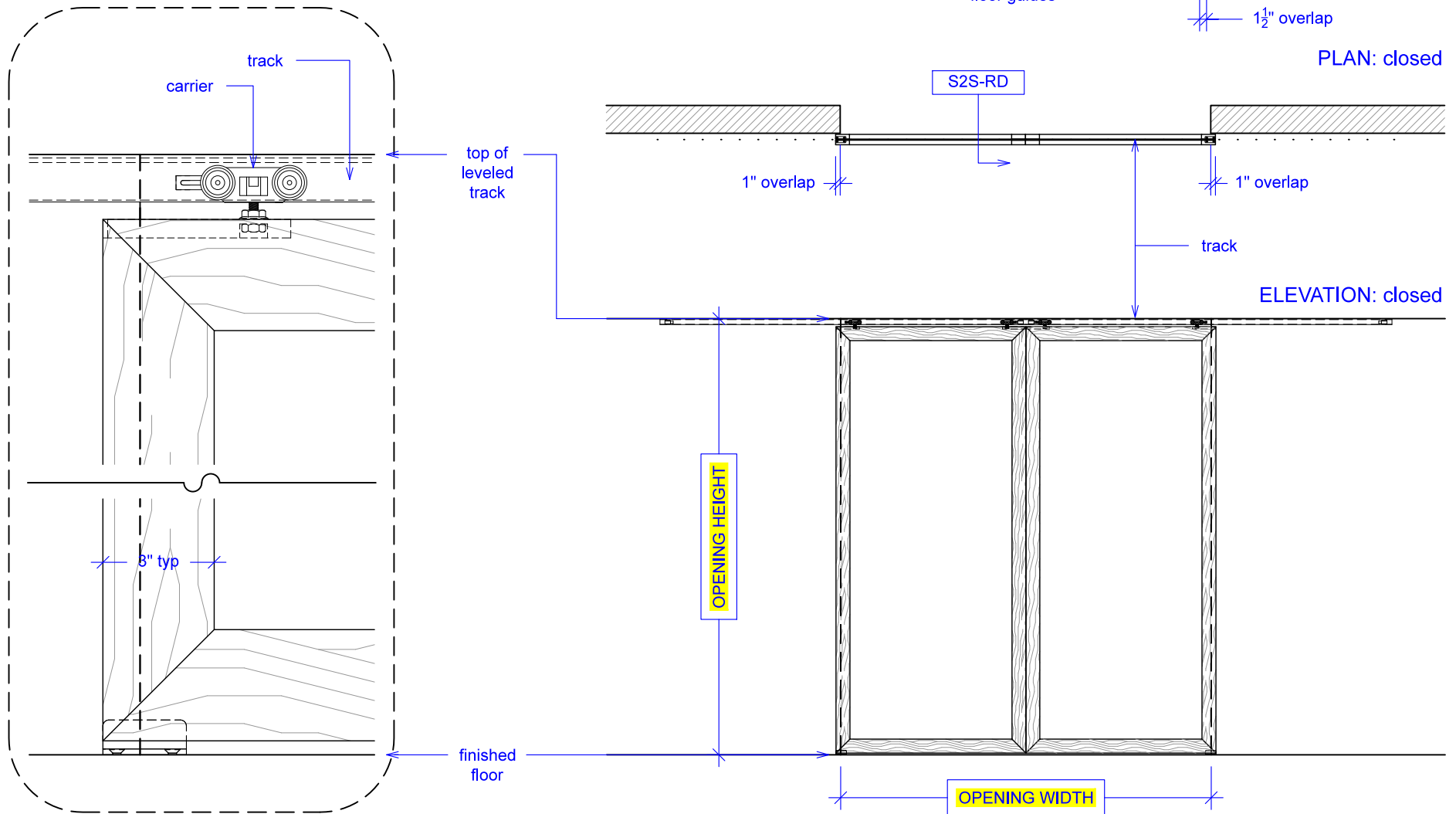
(S2S-RD)

ELEVATION

RAYDOOR STANDARD
SYSTEM DRAWINGS
©2020



YOUR OPENING HEIGHT = PANEL + $2\frac{1}{8}$ "
YOUR OPENING WIDTH = (2 x PANEL) - 2"

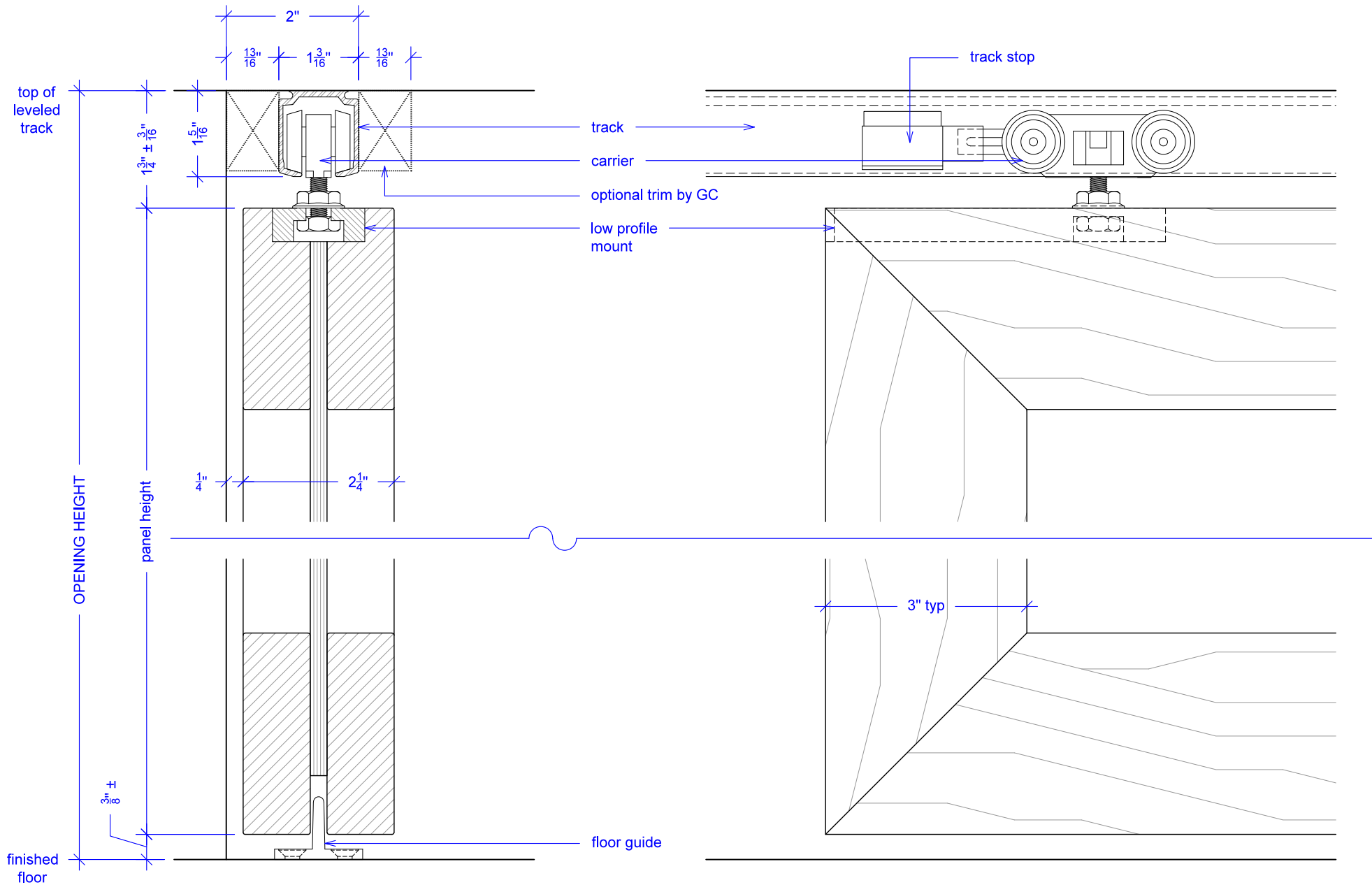


Sliding, 2 Panels, Symmetrical

(S2S-RD)

SECTION

RAYDOOR STANDARD
SYSTEM DRAWINGS
©2020



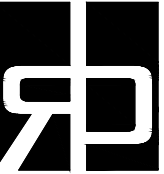
NOTE: each panel weights approximately 75-110 lbs.
Secure tracks accordingly.

Sliding, 2 Panels, Symmetrical

(S2S-RD)

OPERATION OVERVIEW

RAYDOOR STANDARD
SYSTEM DRAWINGS
©2020



KEY:



floor guide



track stop