

# Sliding w/ Soft-Close, 1 Panel

(S1-WM-SC)

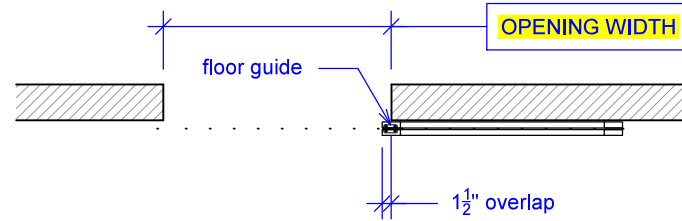
ELEVATION

RAYDOOR STANDARD  
SYSTEM DRAWINGS  
©2020

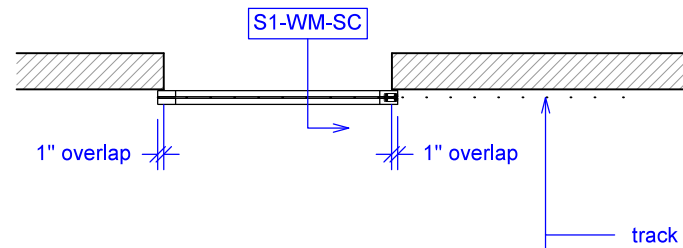


YOUR OPENING HEIGHT = PANEL -  $\frac{5}{8}$ "  
YOUR OPENING WIDTH = PANEL - 2"

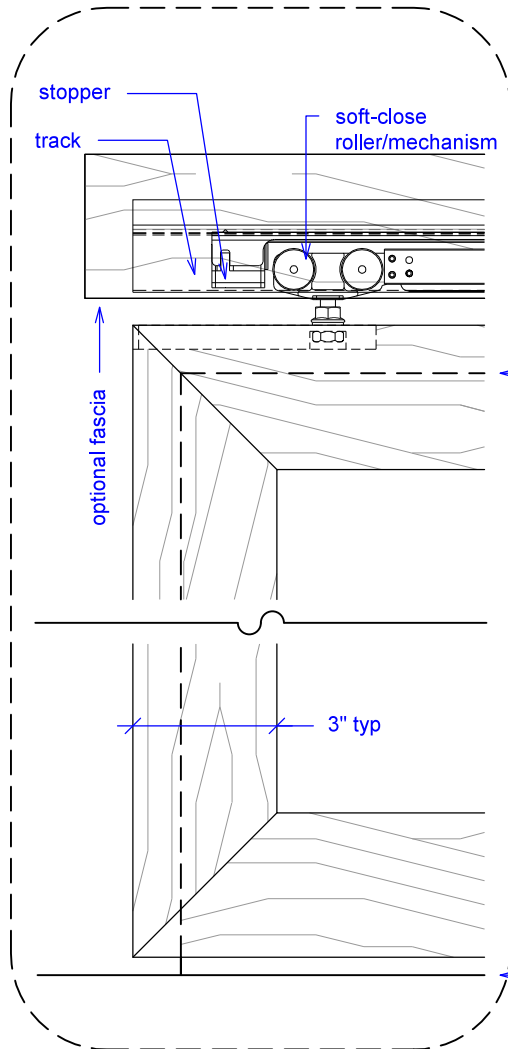
PLAN: open



PLAN: closed



ELEVATION: closed



top of opening

finished floor

OPENING HEIGHT

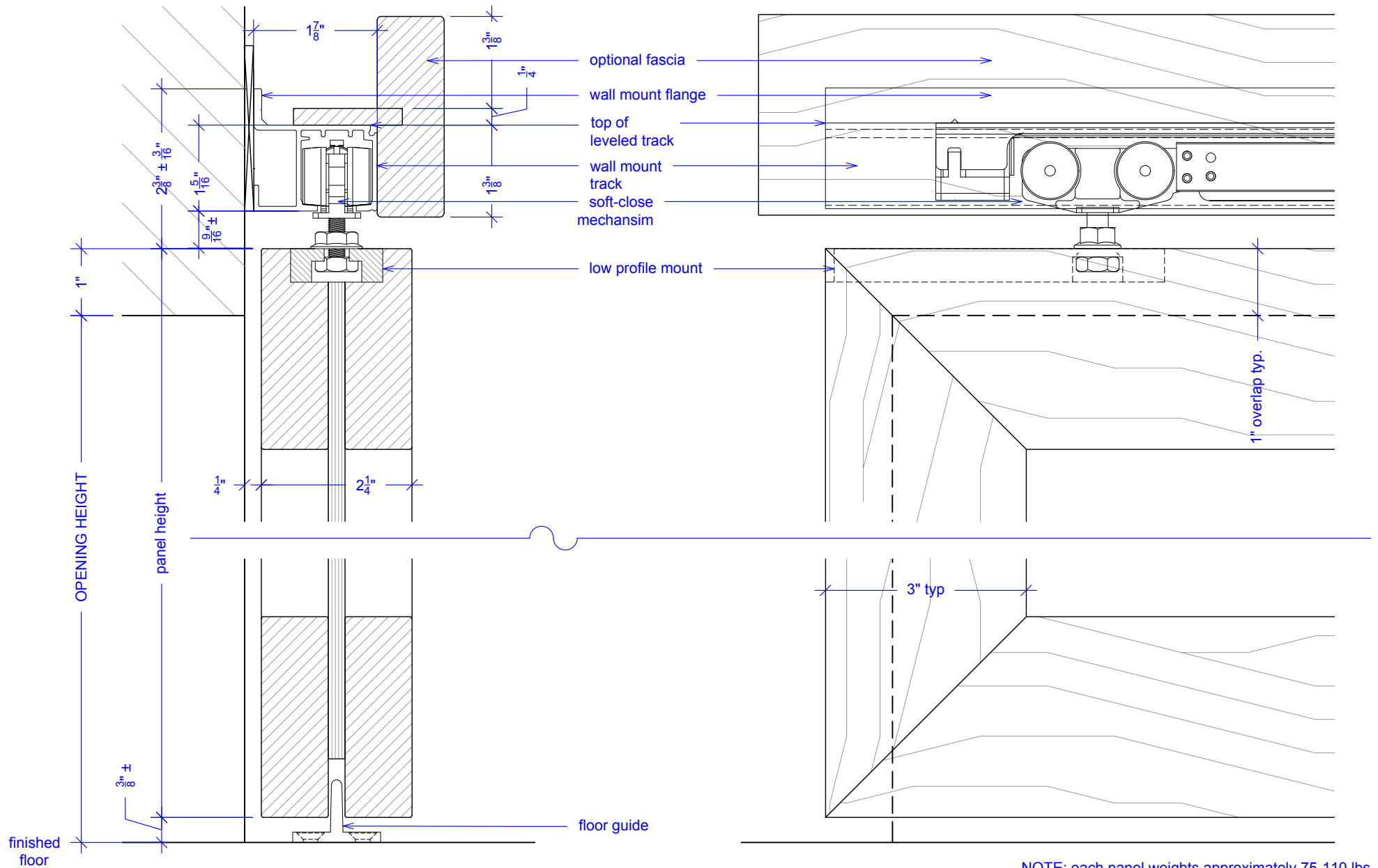
OPENING WIDTH

# Sliding w/ Soft-Close, 1 Panel

(S1-WM-SC)

## SECTION

RAYDOOR STANDARD  
SYSTEM DRAWINGS  
©2020



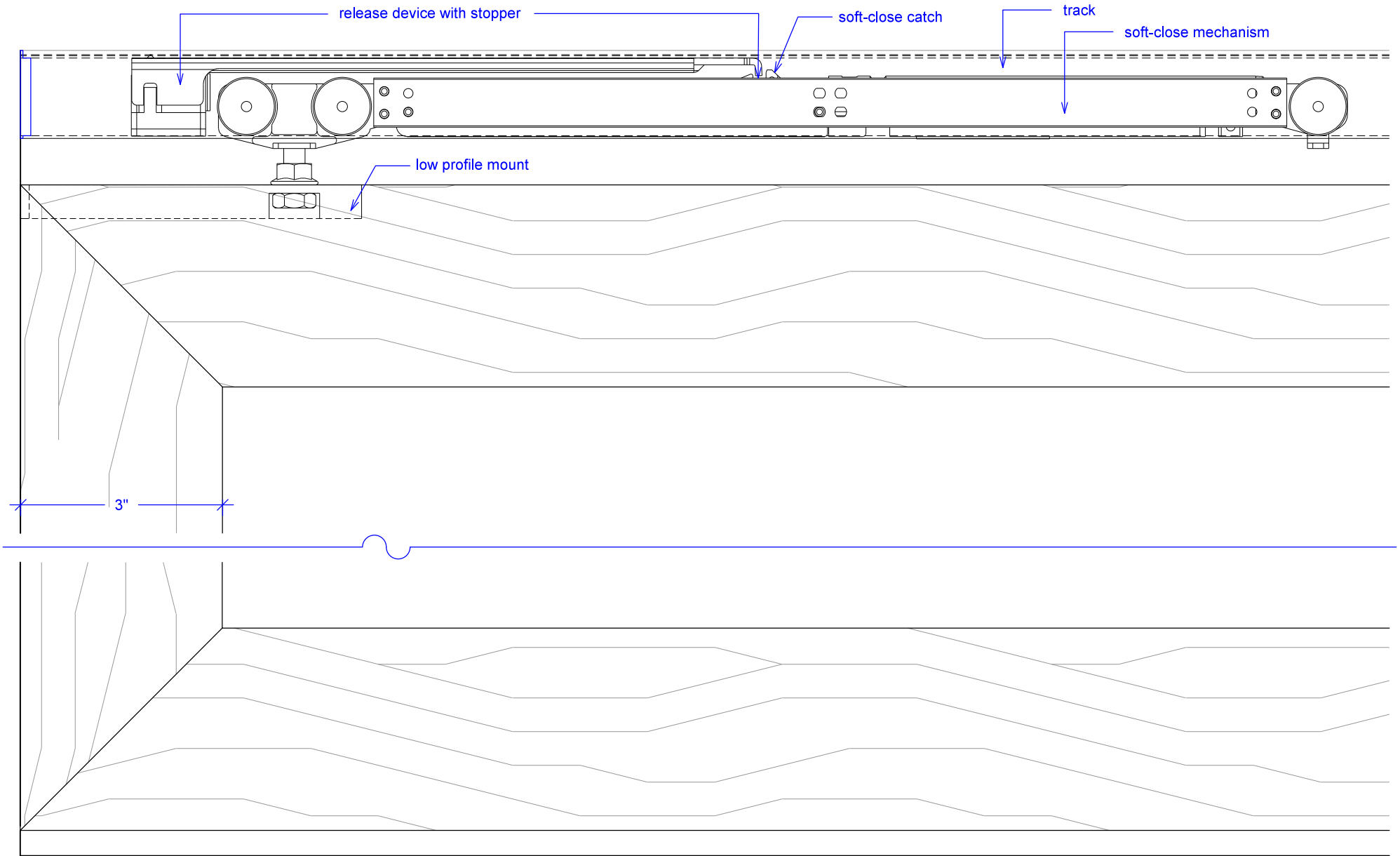
NOTE: each panel weights approximately 75-110 lbs.  
Secure tracks accordingly.

# Sliding w/ Soft-Close, 1 Panel

(S1-WM-SC)

## SOFT-CLOSE HARDWARE

RAYDOOR STANDARD  
SYSTEM DRAWINGS  
©2020



# Sliding w/ Soft-Close, 1 Panel

(S1-WM-SC)

## OPERATION OVERVIEW

RAYDOOR STANDARD  
SYSTEM DRAWINGS  
©2020



KEY:

	floor guide		track stop
-------------------------------------------------------------------------------------	-------------	---------------------------------------------------------------------------------------	------------