

# Sliding, 1 Panel, Wall Mount

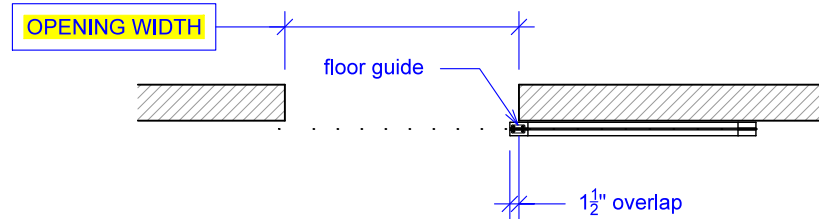
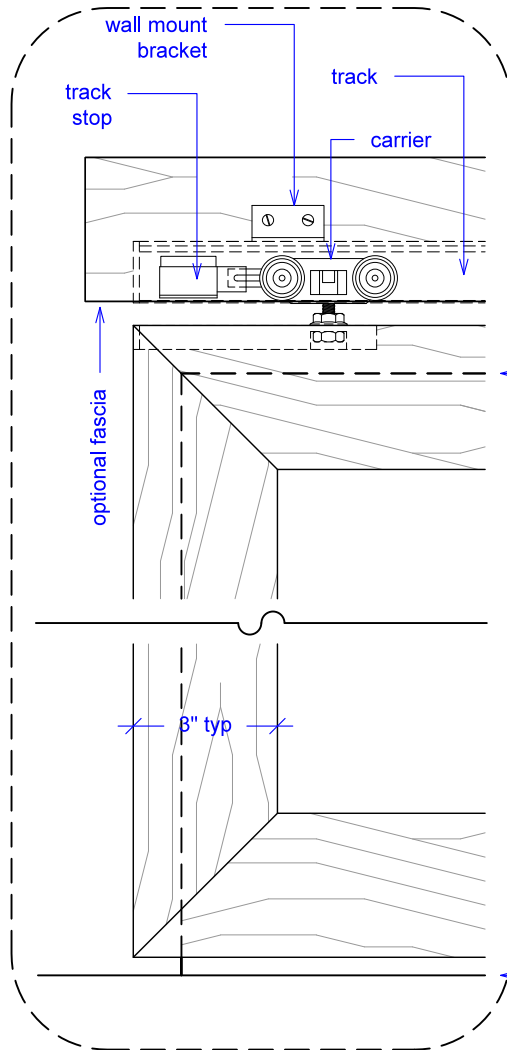
(S1-WM-RD)

ELEVATION

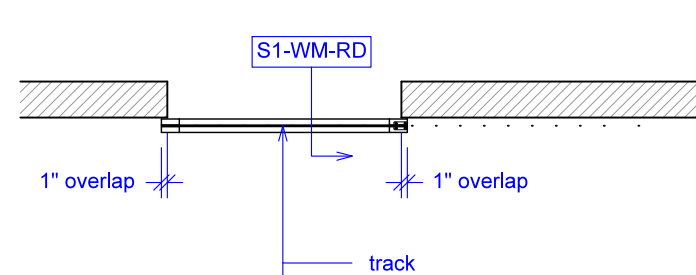
RAYDOOR STANDARD  
SYSTEM DRAWINGS  
©2020



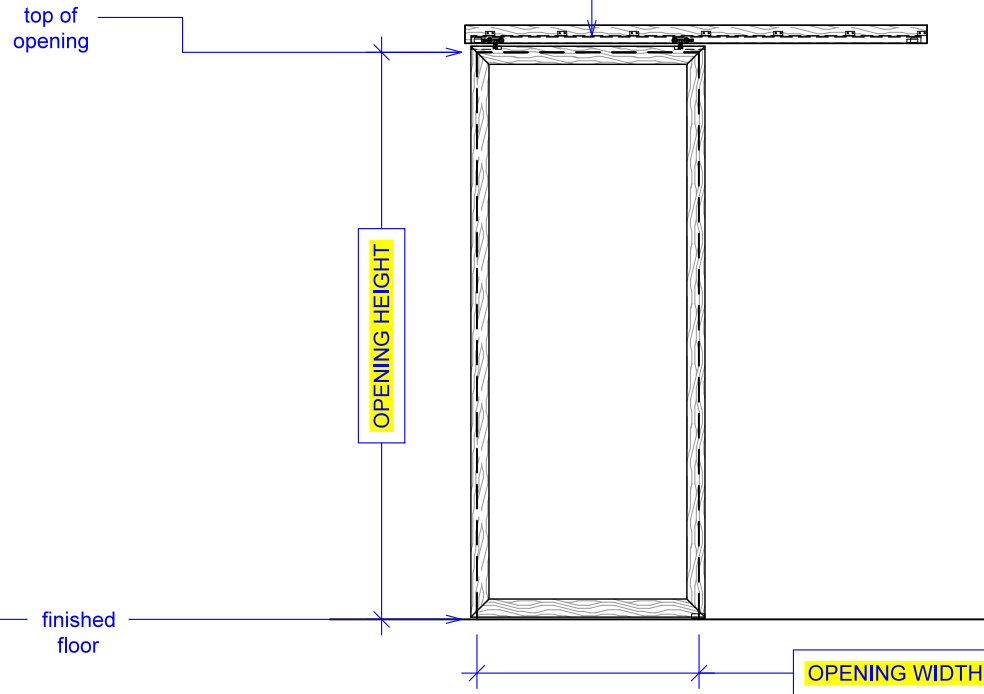
YOUR OPENING HEIGHT = PANEL -  $\frac{5}{8}$ "  
YOUR OPENING WIDTH = PANEL - 2"



PLAN: open



PLAN: closed



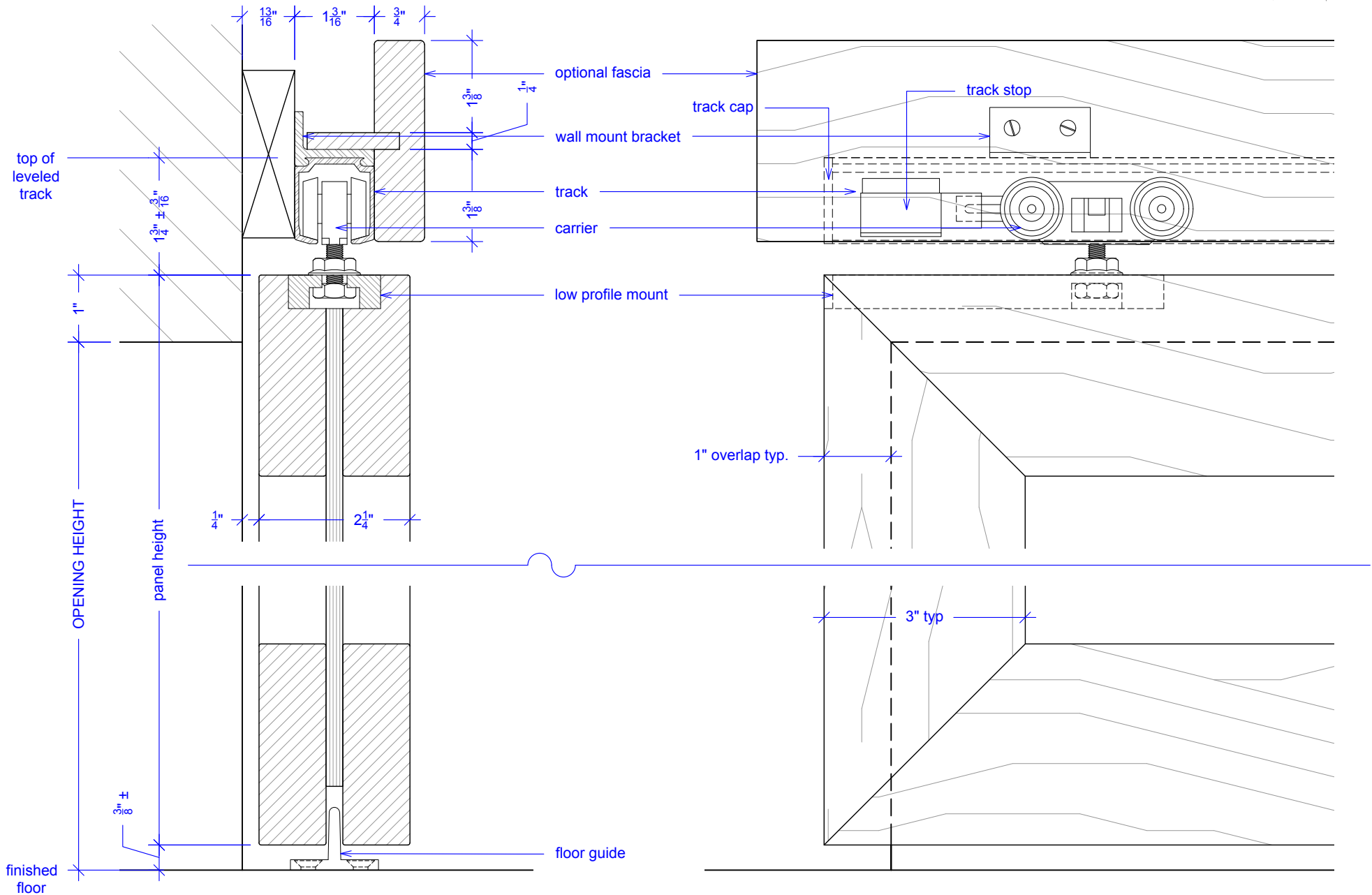
ELEVATION: closed

# Sliding, 1 Panel, Wall Mount

(S1-WM-RD)

## SECTION

RAYDOOR STANDARD  
SYSTEM DRAWINGS  
©2020



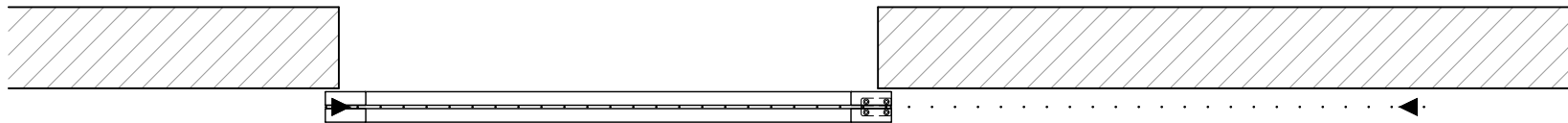
NOTE: each panel weights approximately 75-110 lbs.  
Secure tracks accordingly.

# Sliding, 1 Panel, Wall Mount

(S1-WM-RD)

## OPERATION OVERVIEW

RAYDOOR STANDARD  
SYSTEM DRAWINGS  
©2020



KEY:



floor guide



track stop