

# Sliding, 1 Panel

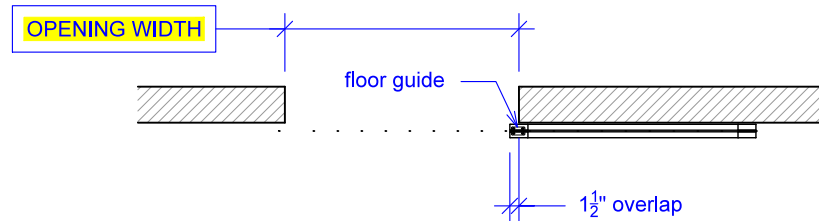
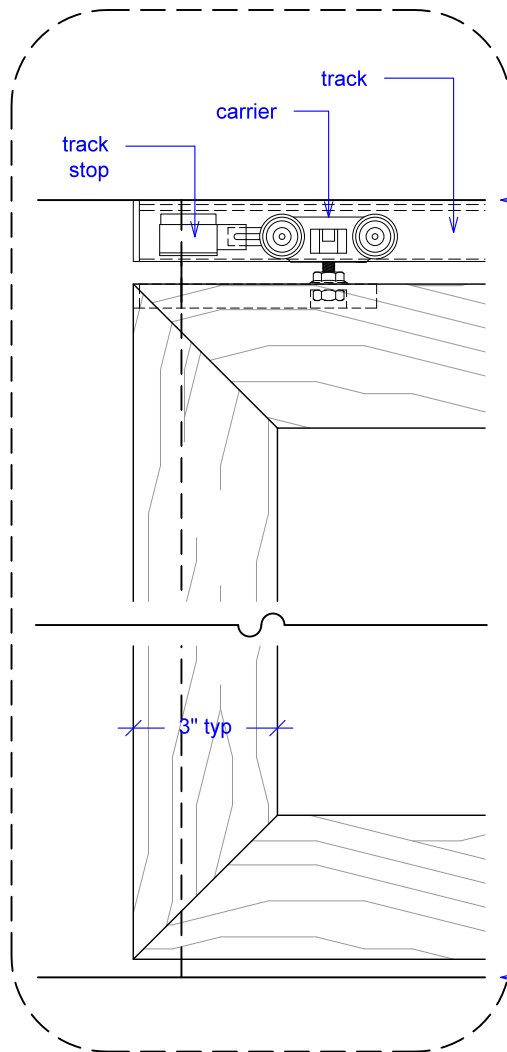
(S1-RD)

ELEVATION

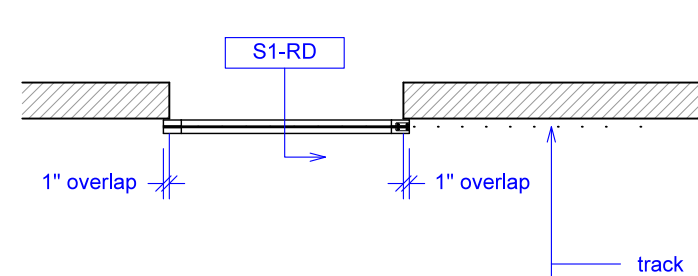
RAYDOOR STANDARD  
SYSTEM DRAWINGS  
©2020



YOUR OPENING HEIGHT = PANEL +  $2\frac{1}{8}$ "  
YOUR OPENING WIDTH = PANEL - 2"

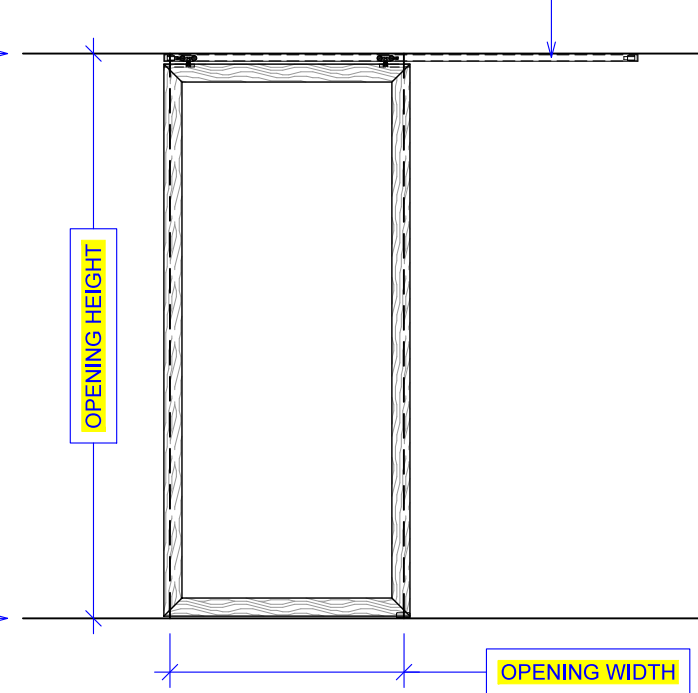


PLAN: open



PLAN: closed

top of leveled track



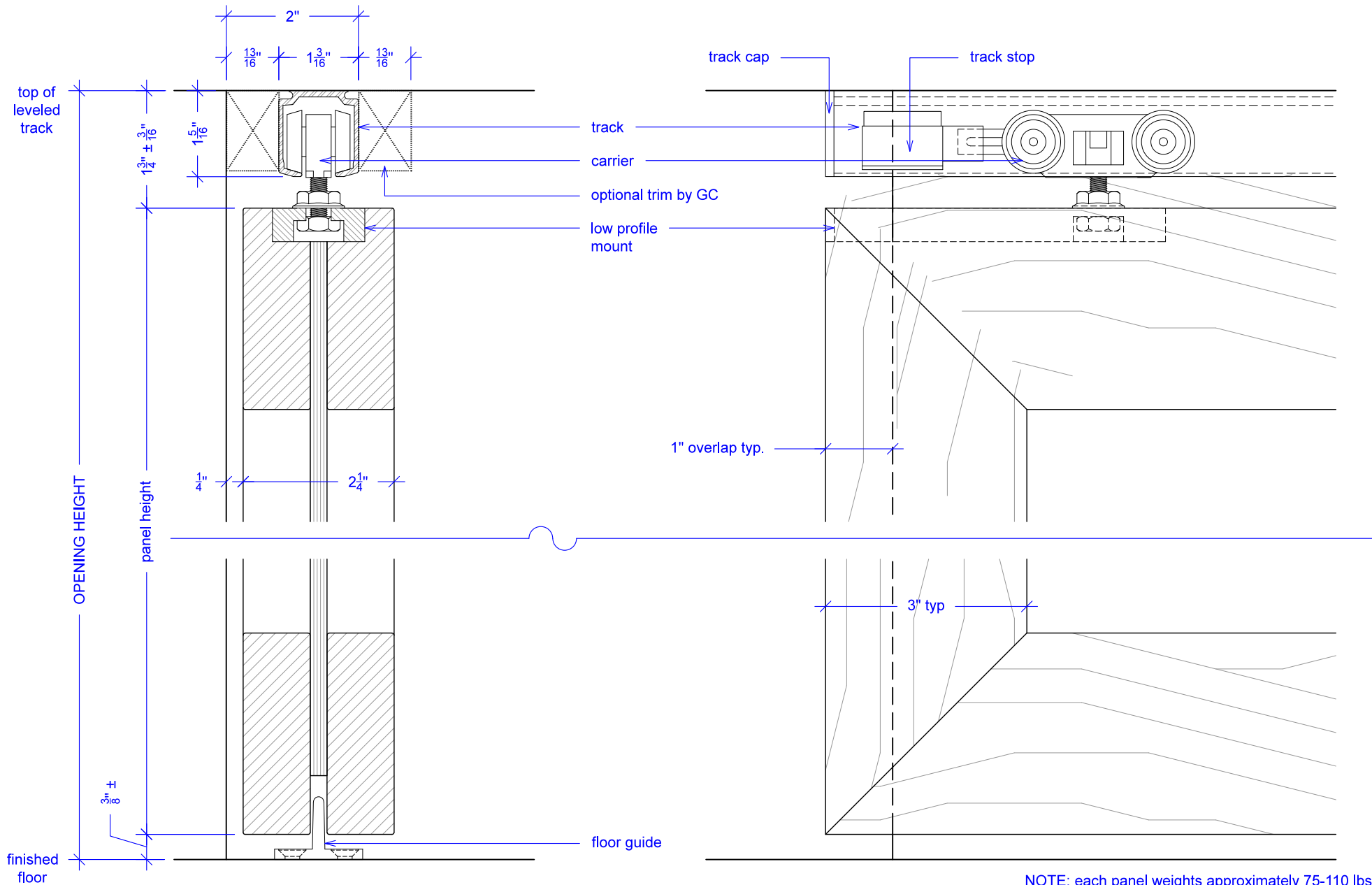
ELEVATION: closed

# Sliding, 1 Panel

(S1-RD)

## SECTION

RAYDOOR STANDARD  
SYSTEM DRAWINGS  
©2020



NOTE: each panel weights approximately 75-110 lbs.  
Secure tracks accordingly.

# Sliding, 1 Panel

(S1-RD)

## OPERATION OVERVIEW

RAYDOOR STANDARD  
SYSTEM DRAWINGS  
©2020



KEY:



floor guide



track stop