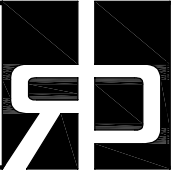


# Sliding w/ Soft-Close, 1 Sided Overlap, 1 Panel

(S1-1SO-WM-SC)

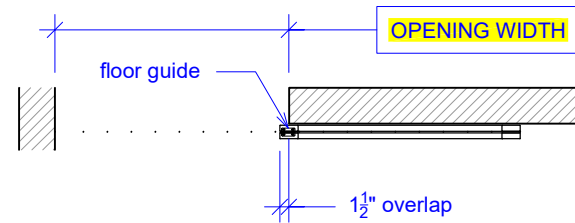
ELEVATION

RAYDOOR STANDARD  
SYSTEM DRAWINGS  
©2020

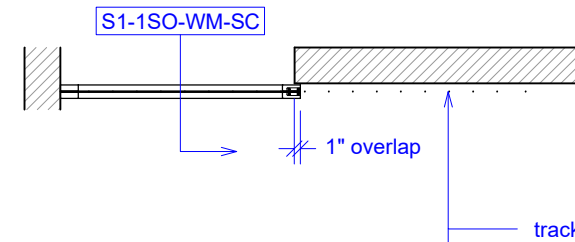


PLAN: open

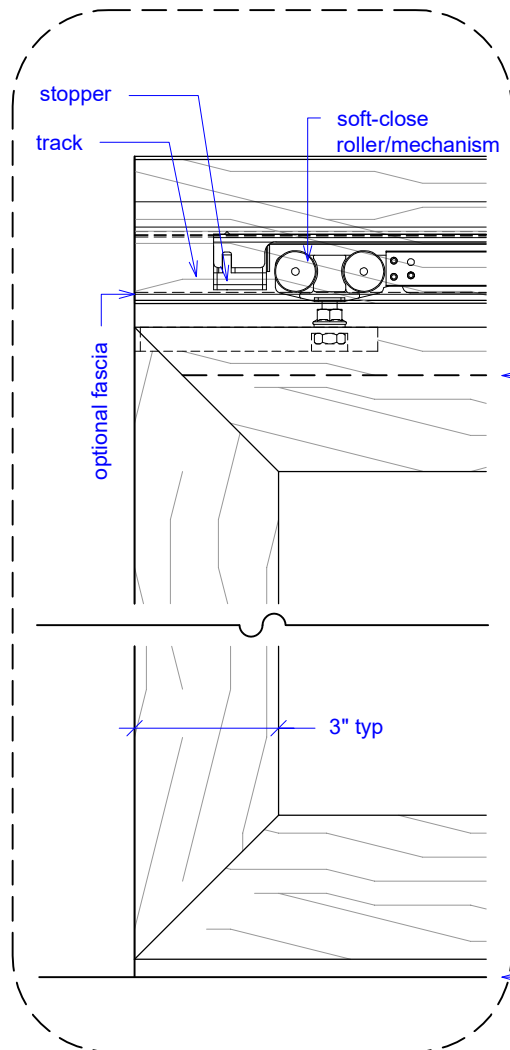
YOUR OPENING HEIGHT = PANEL -  $\frac{5}{8}$ "  
YOUR OPENING WIDTH = PANEL - 1"



PLAN: closed



ELEVATION: closed

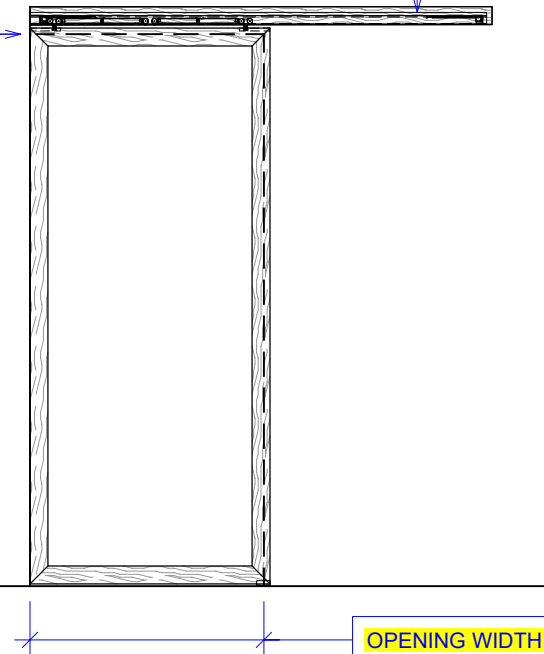


top of opening

finished floor

OPENING HEIGHT

OPENING WIDTH

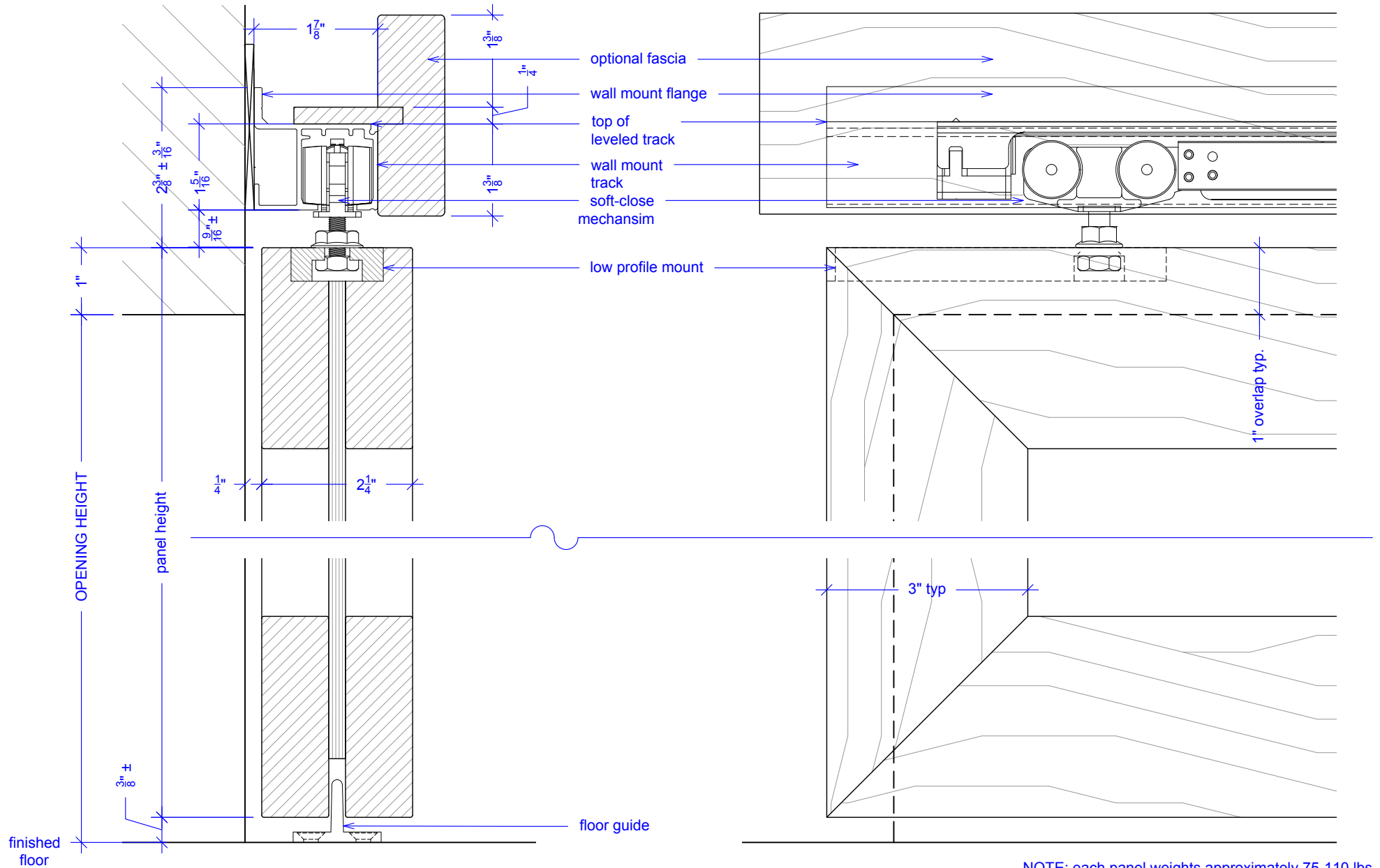


# Sliding w/ Soft-Close, 1 Sided Overlap, 1 Panel

(S1-1SO-WM-SC)

## SECTION

RAYDOOR STANDARD  
SYSTEM DRAWINGS  
©2020



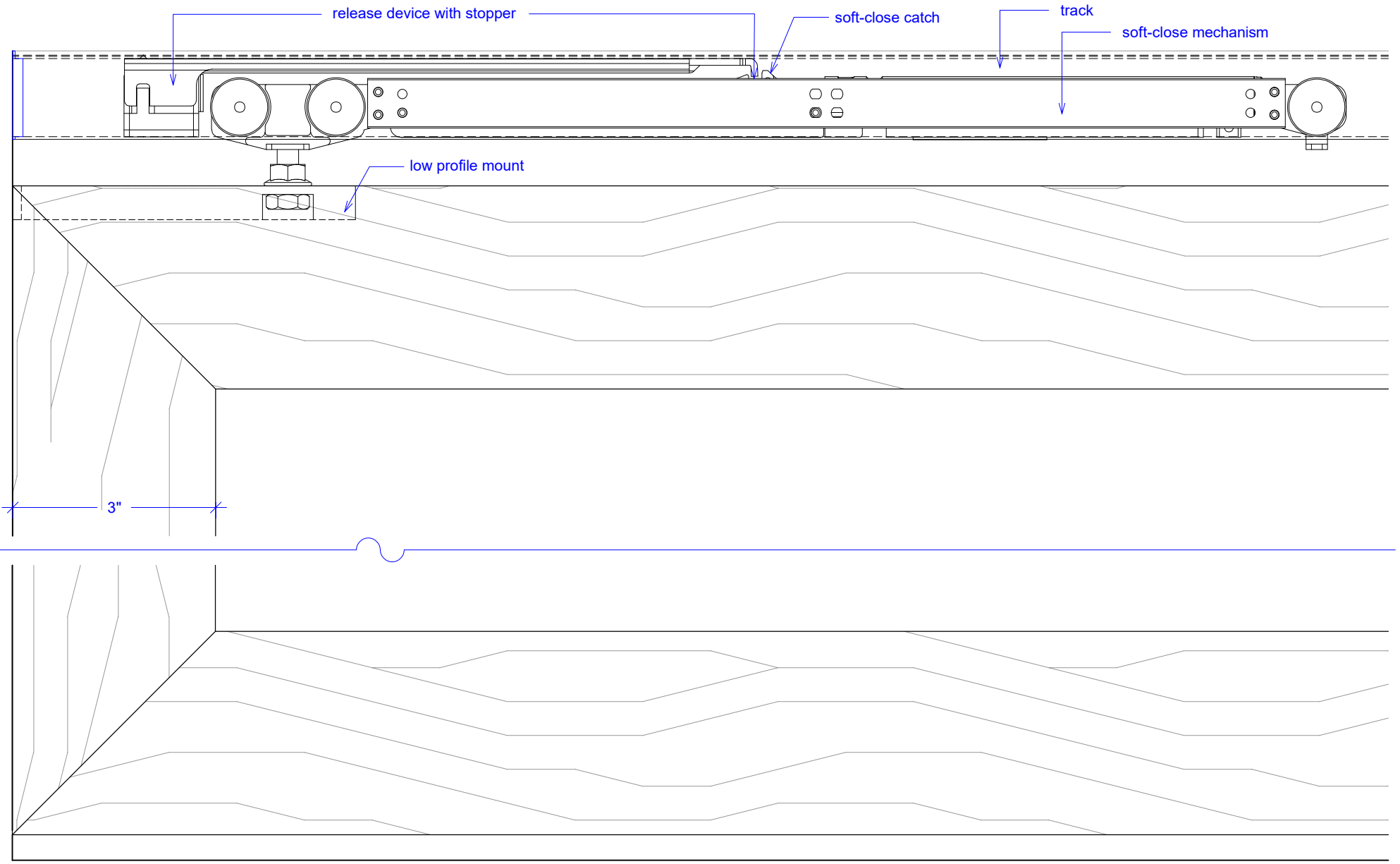
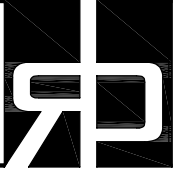
NOTE: each panel weights approximately 75-110 lbs.  
Secure tracks accordingly.

# Sliding w/ Soft-Close, 1 Sided Overlap, 1 Panel

(S1-1SO-WM-SC)

## SOFT-CLOSE HARDWARE

RAYDOOR STANDARD  
SYSTEM DRAWINGS  
©2020

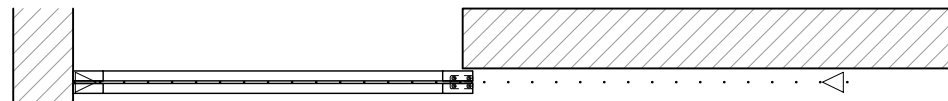
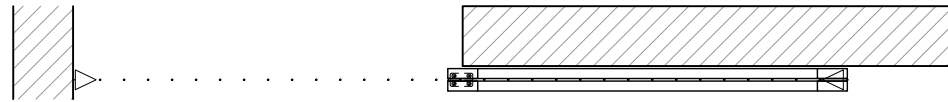


# Sliding w/ Soft-Close, 1 Sided Overlap, 1 Panel

(S1-1SO-WM-SC)

## OPERATION OVERVIEW

RAYDOOR STANDARD  
SYSTEM DRAWINGS  
©2020



KEY:



floor guide



track stop