

Sliding, 1 Panel, 1 Side Overlap

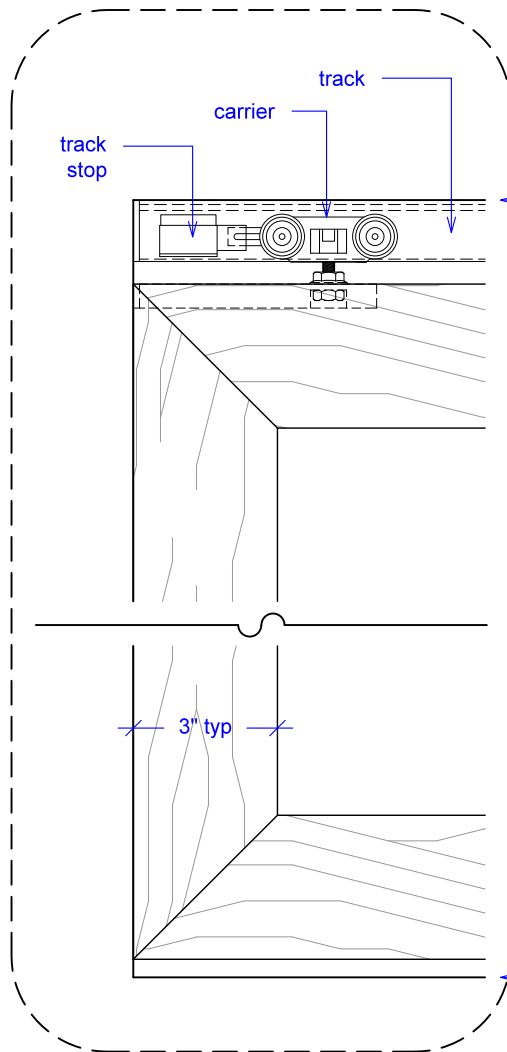
(S1-1SO-RD)

ELEVATION

RAYDOOR STANDARD
SYSTEM DRAWINGS
©2020

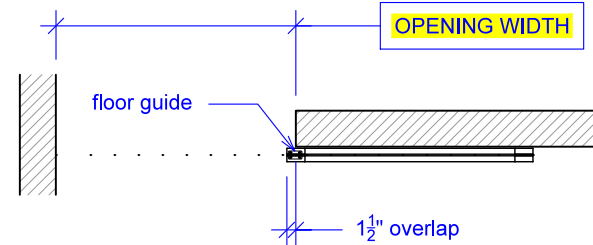


YOUR OPENING HEIGHT = PANEL + $2\frac{1}{8}$ "
YOUR OPENING WIDTH = PANEL - 1"



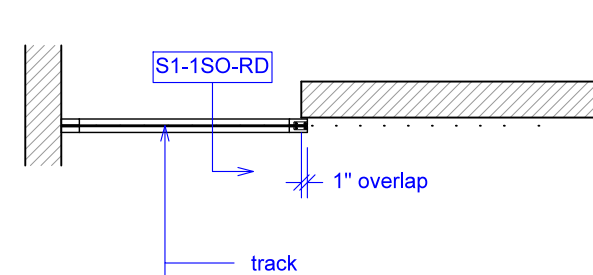
top of leveled track

finished floor

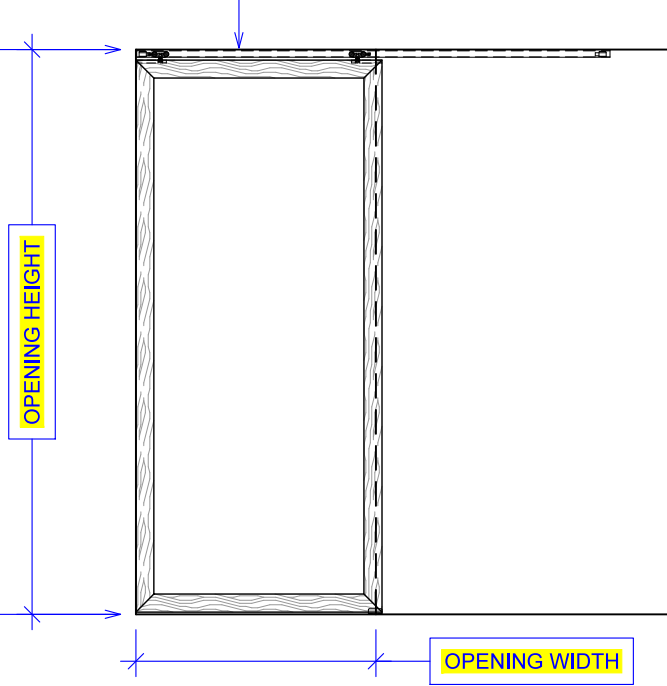


OPENING WIDTH

PLAN: open



PLAN: closed



OPENING HEIGHT

OPENING WIDTH

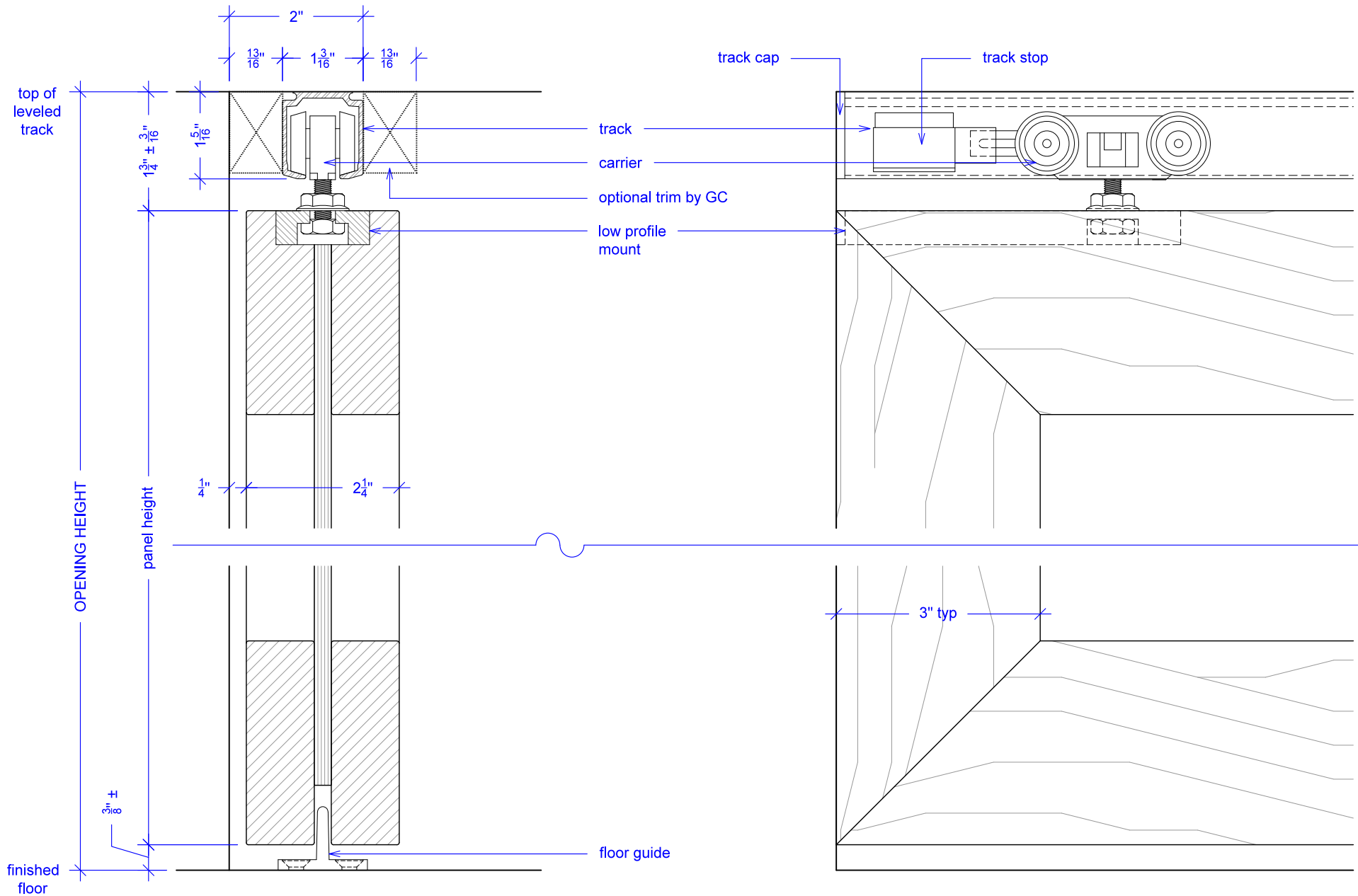
ELEVATION: closed

Sliding, 1 Panel, 1 Side Overlap

(S1-1SO-RD)

SECTION

RAYDOOR STANDARD
SYSTEM DRAWINGS
©2020



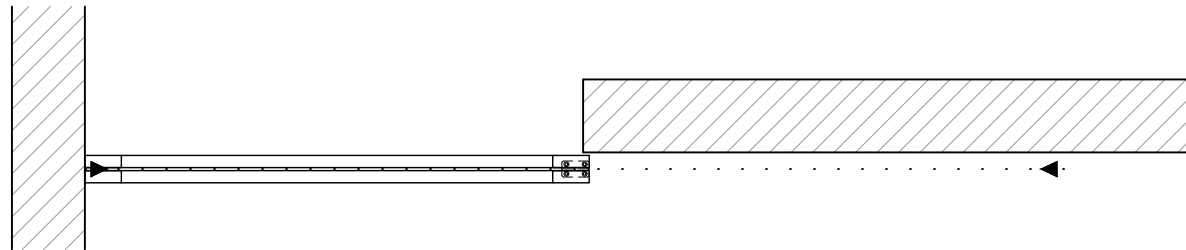
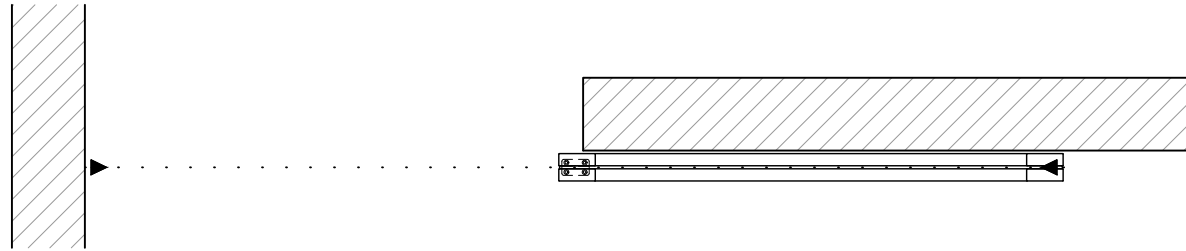
NOTE: each panel weights approximately 75-110 lbs.
Secure tracks accordingly.

Sliding, 1 Panel, 1 Side Overlap

(S1-1SO-RD)

OPERATION OVERVIEW

RAYDOOR STANDARD
SYSTEM DRAWINGS
©2020



KEY:



floor guide



track stop