

Sliding Wing Wall w/ Soft-Close, 4 Panels, Symmetrical

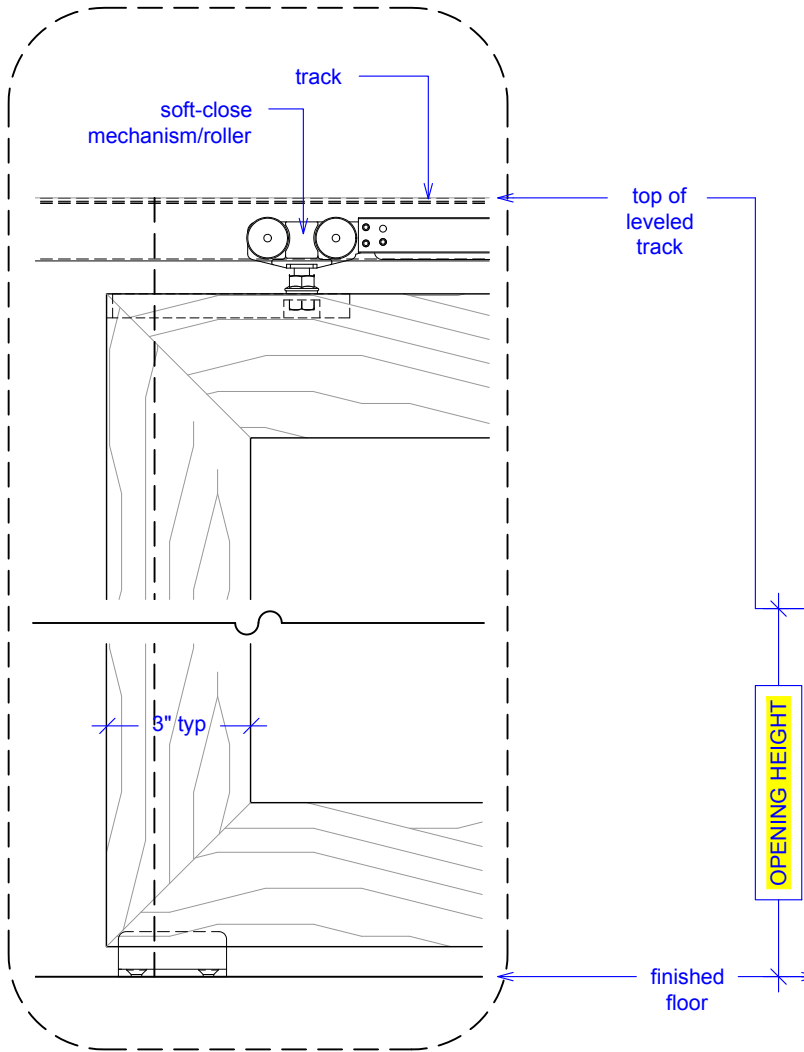
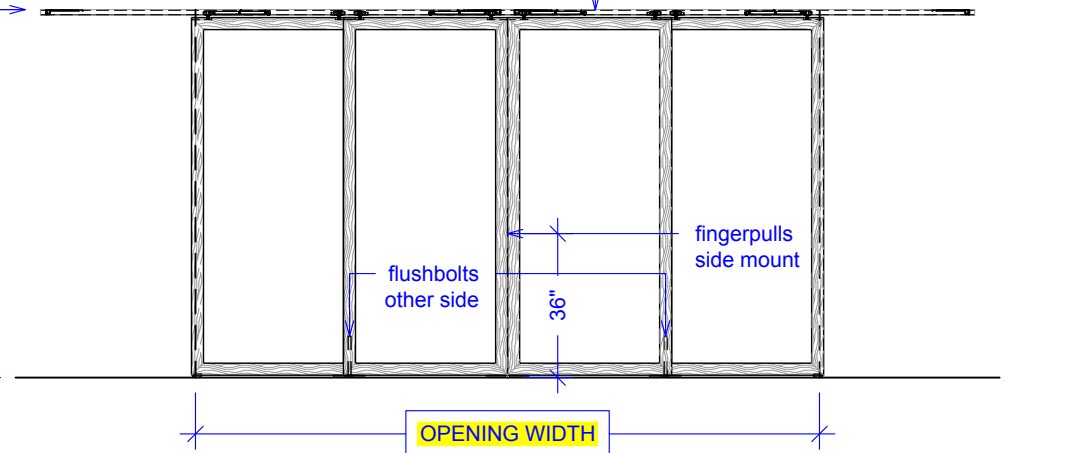
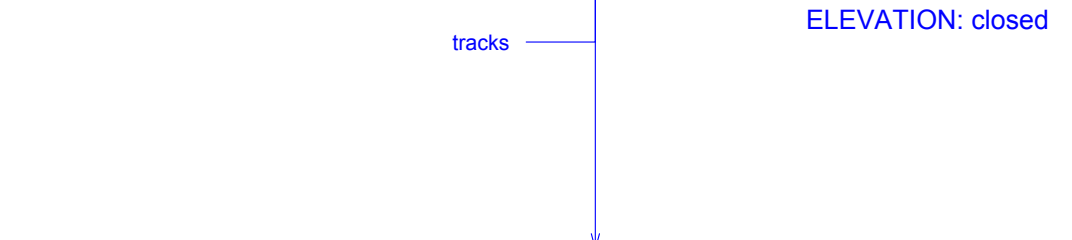
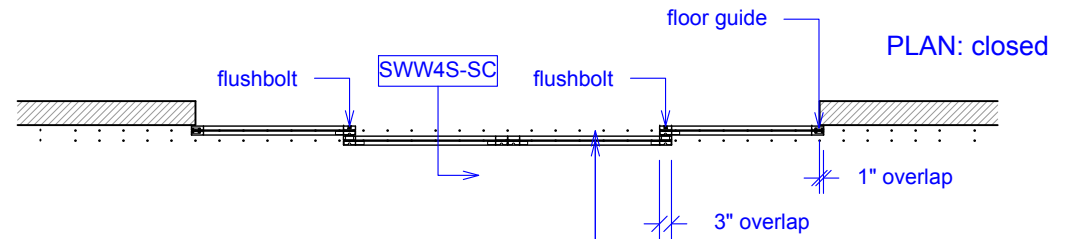
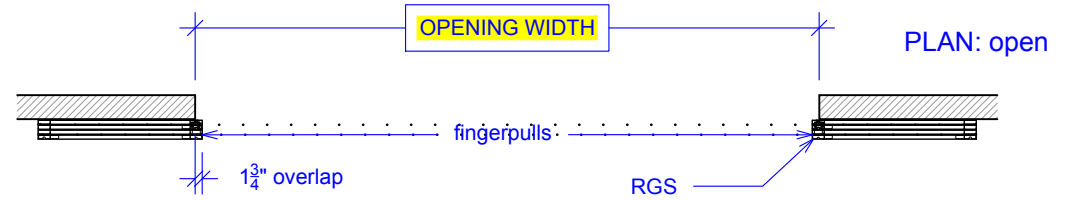
(SWW4S-SC)

ELEVATION

RAYDOOR STANDARD
SYSTEM DRAWINGS
©2020



YOUR OPENING HEIGHT = PANEL + 2⁵/₈"
YOUR OPENING WIDTH = (4 x PANEL) - 8"



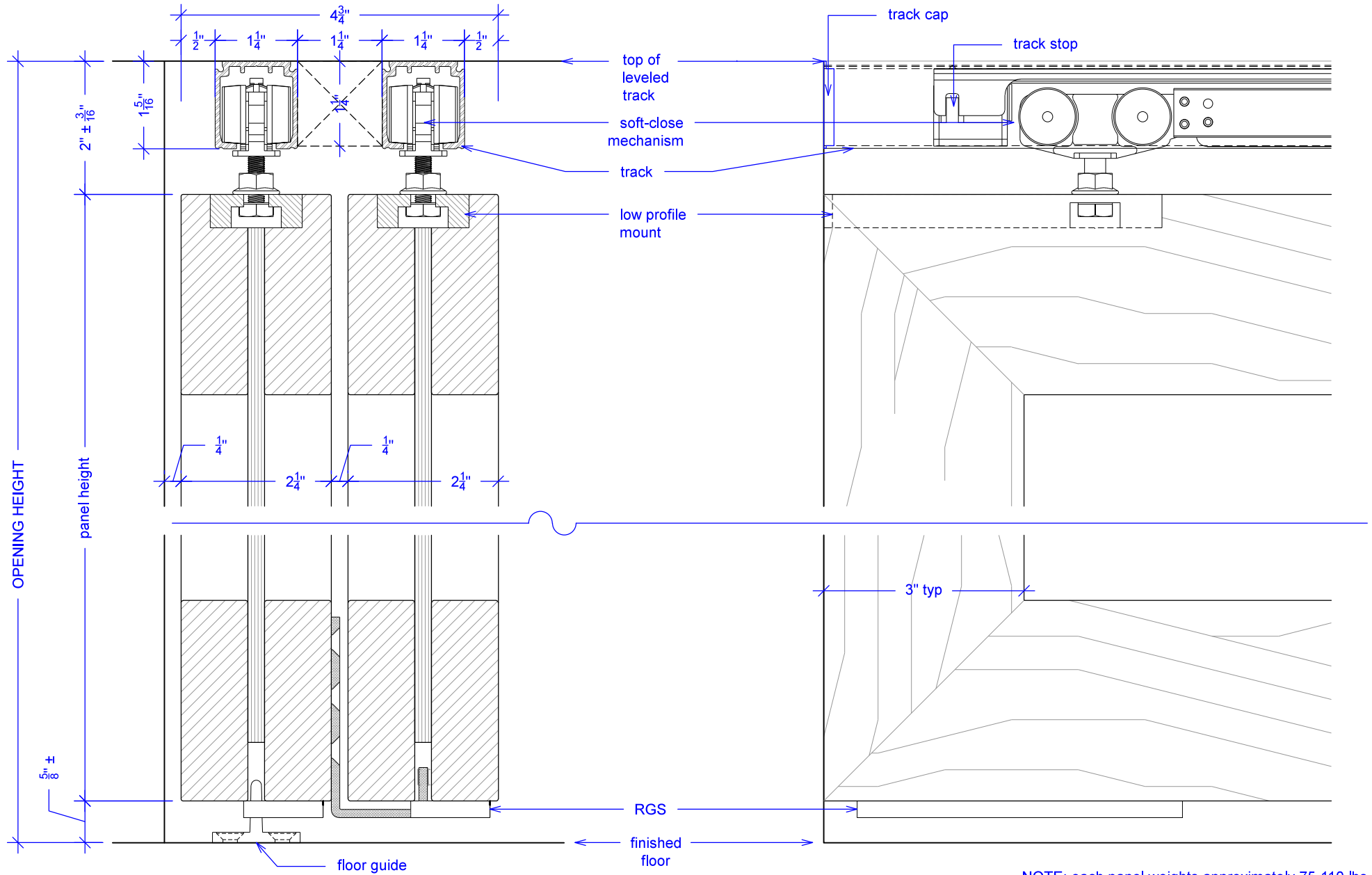
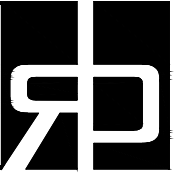
OPENING HEIGHT

OPENING WIDTH

Sliding Wing Wall w/ Soft-Close, 4 Panels, Symmetrical

(SWW4S-SC)
SECTION

RAYDOOR STANDARD
SYSTEM DRAWINGS
©2020



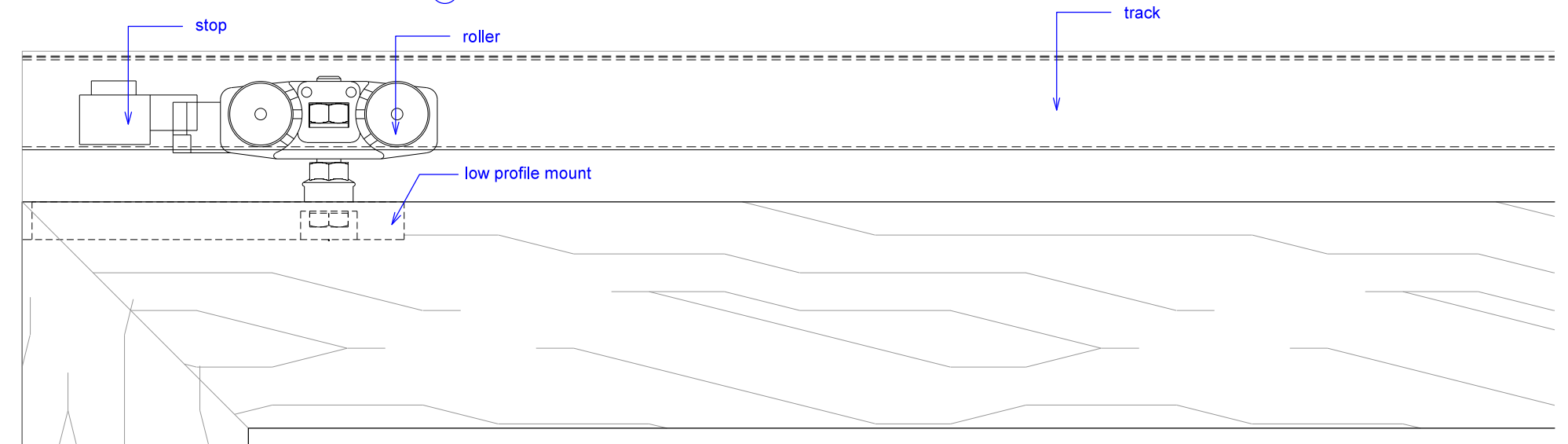
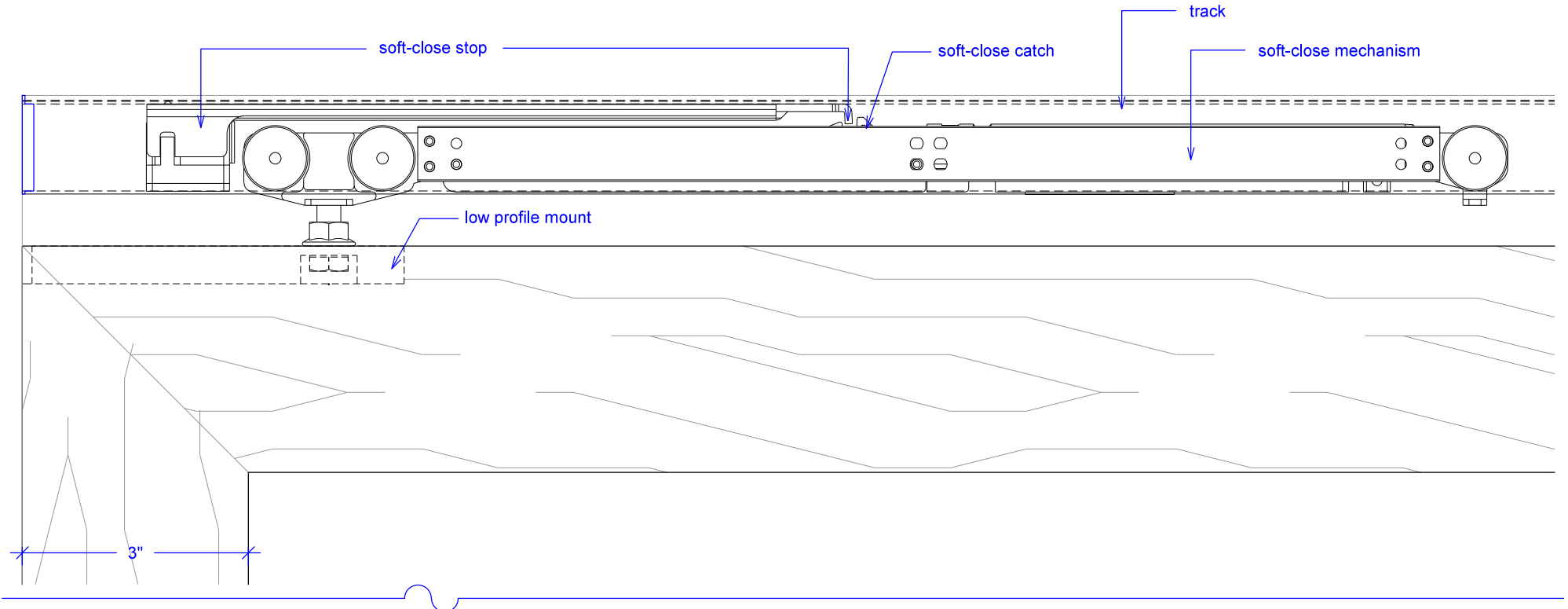
NOTE: each panel weights approximately 75-110 lbs.
Secure tracks accordingly.

Sliding Wing Wall w/ Soft-Close, 4 Panels, Symmetrical

(SWW4S-SC)

SOFT-CLOSE HARDWARE

RAYDOOR STANDARD
SYSTEM DRAWINGS
©2020

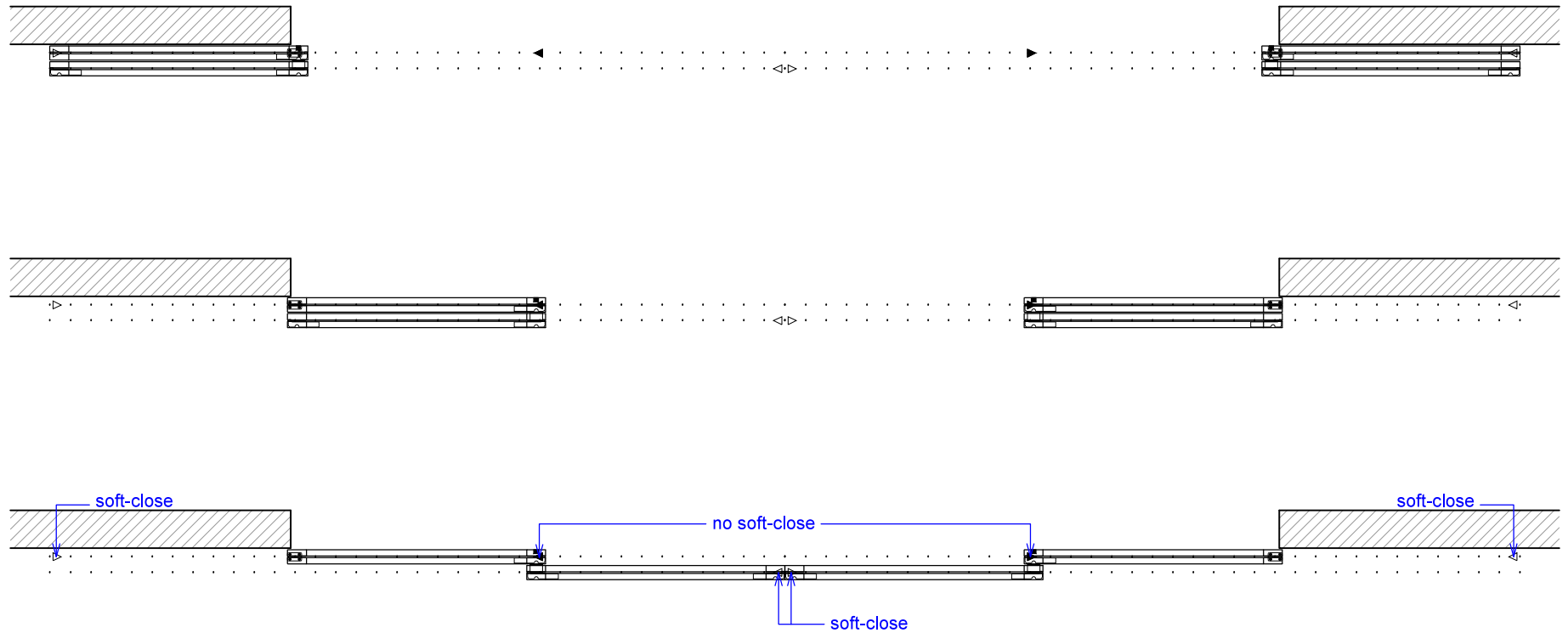
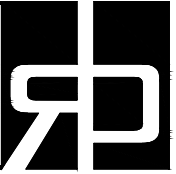


Sliding Wing Wall w/ Soft-Close, 4 Panels, Symmetrical

(SWW4S-SC)

OPERATION OVERVIEW

RAYDOOR STANDARD
SYSTEM DRAWINGS
©2020



KEY:

 floor guide	 stopper / release device	 track stop	 RGS hook	 RGS stop	 flushbolt
---	--	--	--	--	---