

Sliding Wing Wall w/ Soft-Close, 4 Panels

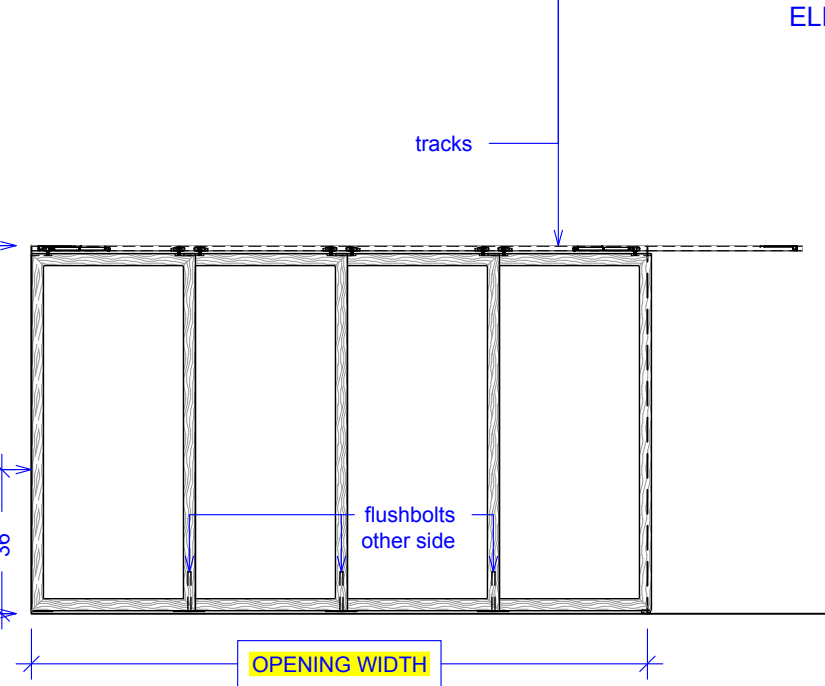
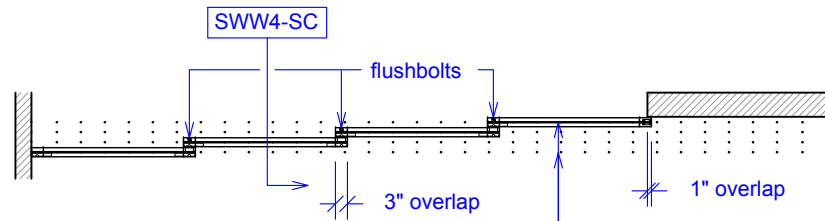
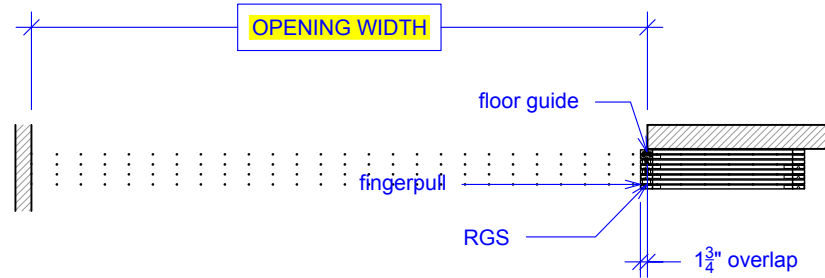
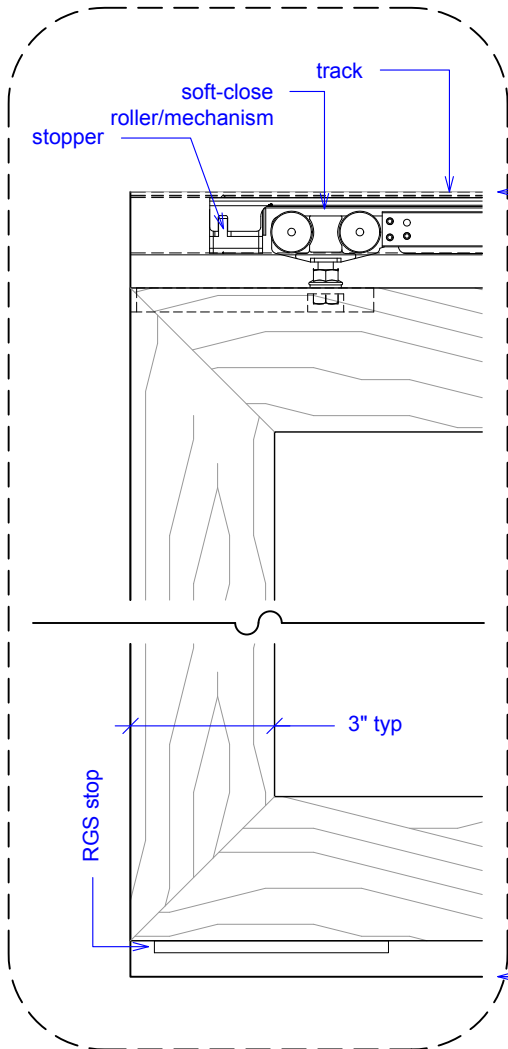
(SWW4-SC)

ELEVATION

RAYDOOR STANDARD
SYSTEM DRAWINGS
©2020



YOUR OPENING HEIGHT = PANEL + 2 $\frac{3}{4}$ "
YOUR OPENING WIDTH = (4 x PANEL) - 10"



top of leveled track

finished floor

OPENING HEIGHT

OPENING WIDTH

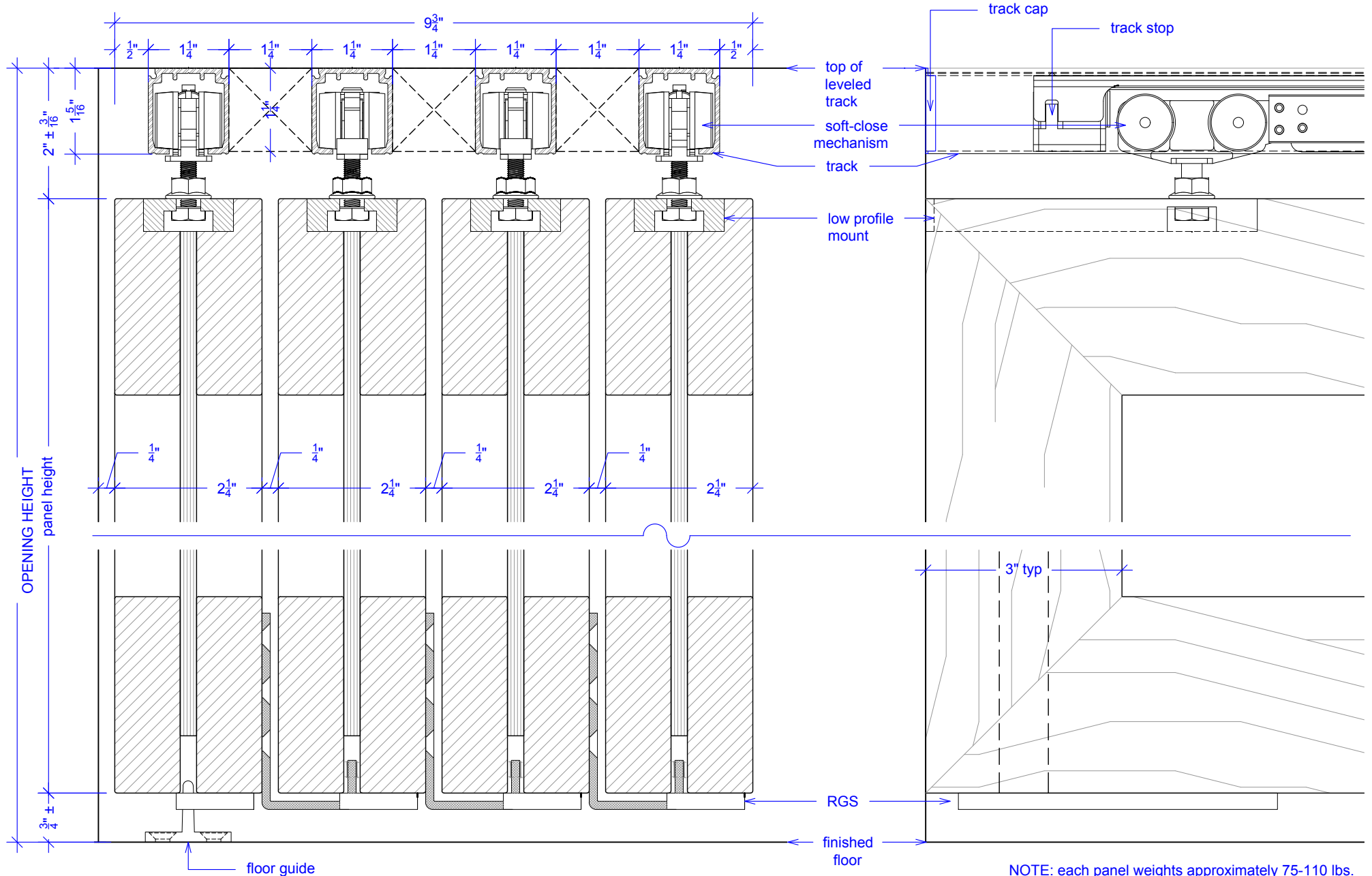
OPENING WIDTH

Sliding Wing Wall w/ Soft-Close, 4 Panels

(SWW4-SC)

SECTION

RAYDOOR STANDARD
SYSTEM DRAWINGS
©2020



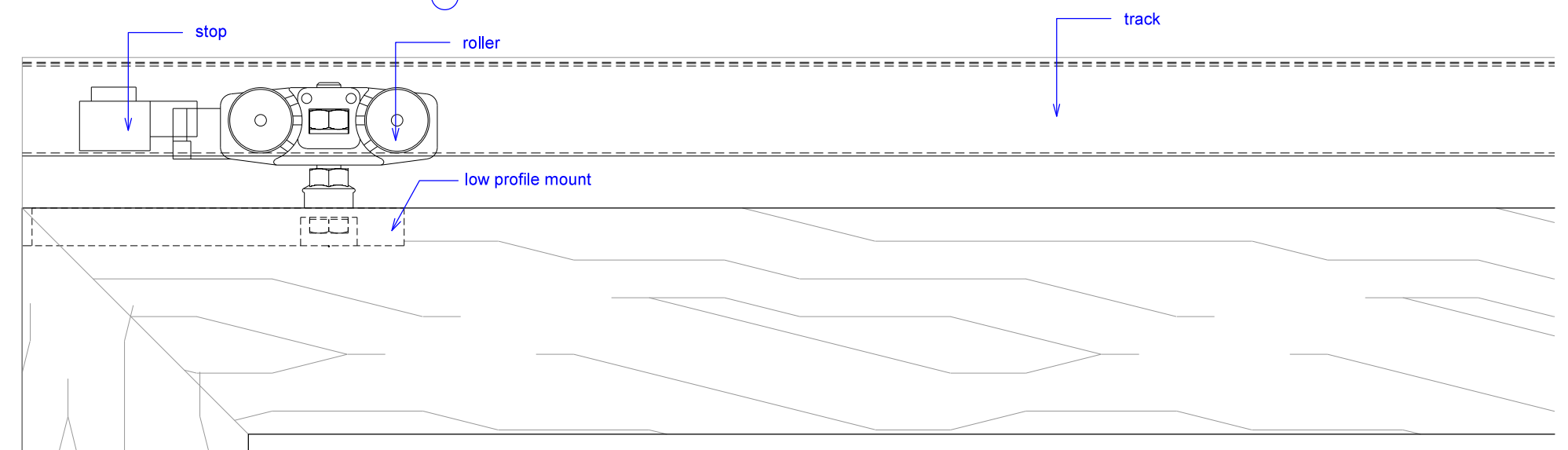
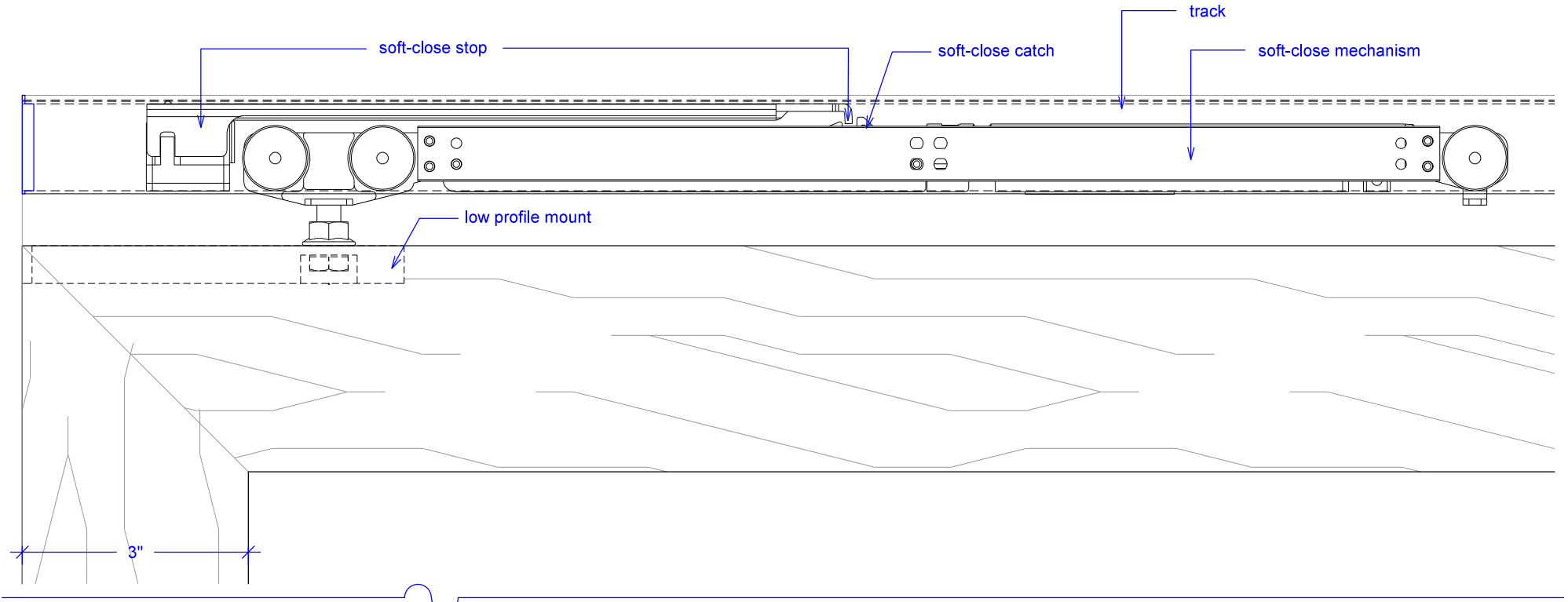
NOTE: each panel weights approximately 75-110 lbs.
Secure tracks accordingly.

Sliding Wing Wall w/ Soft-Close, 4 Panels

(SWW4-SC)

SOFT-CLOSE HARDWARE

RAYDOOR STANDARD
SYSTEM DRAWINGS
©2020

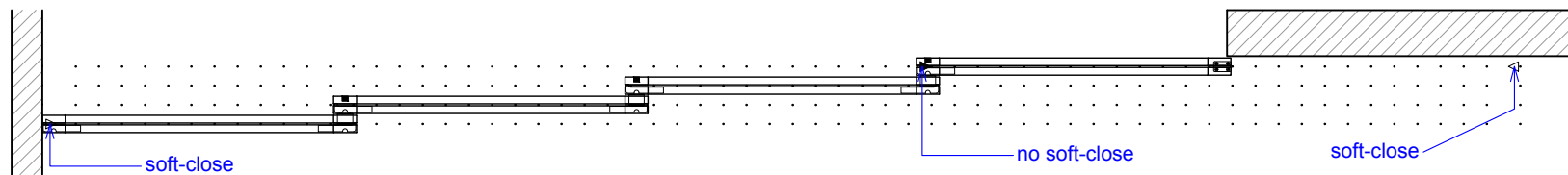
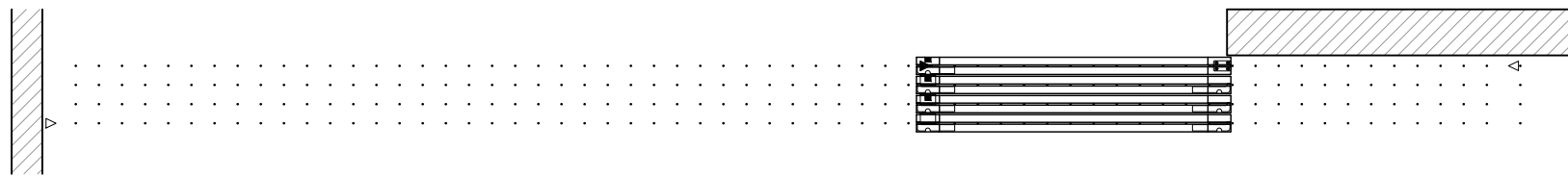
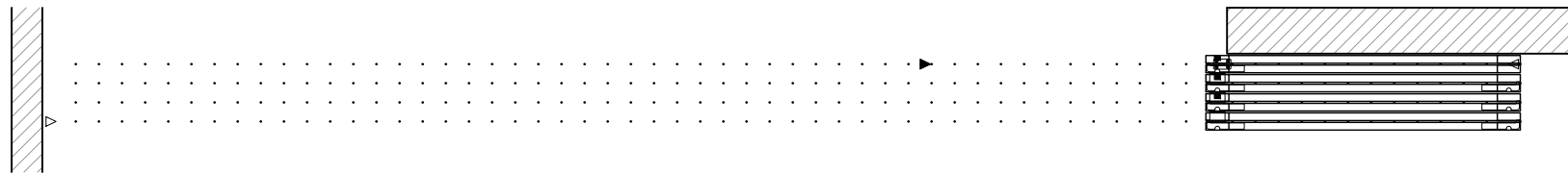


Sliding Wing Wall w/ Soft-Close, 4 Panels

(SWW4-SC)

OPERATION OVERVIEW

RAYDOOR STANDARD
SYSTEM DRAWINGS
©2020



KEY:

▷ stopper / release device

▶ track stop

□ RGS hook

┌ RGS stop

■ flushbolt