

Sliding Wing Wall, 4 Panels

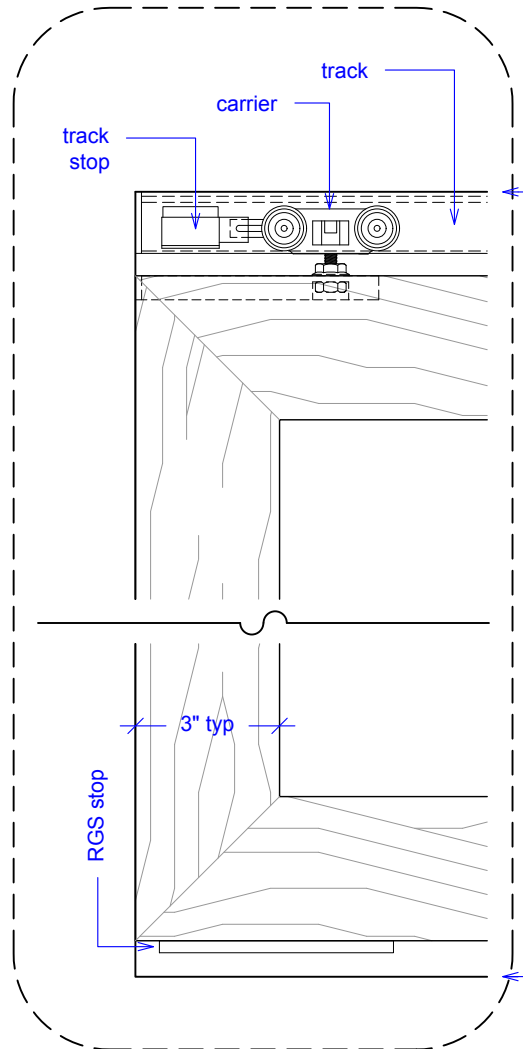
(SWW4-RD)

ELEVATION

RAYDOOR STANDARD
SYSTEM DRAWINGS
©2020

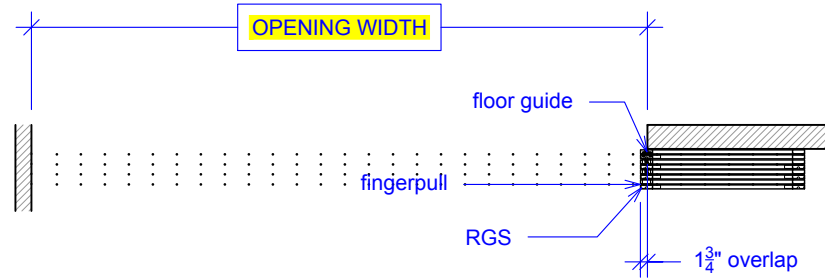


YOUR OPENING HEIGHT = PANEL + 2 $\frac{1}{2}$ "
YOUR OPENING WIDTH = (4 x PANEL) - 10"

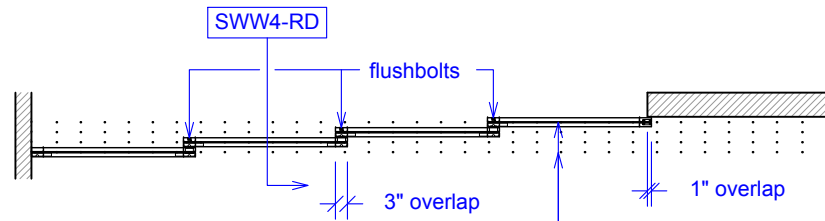


top of leveled track

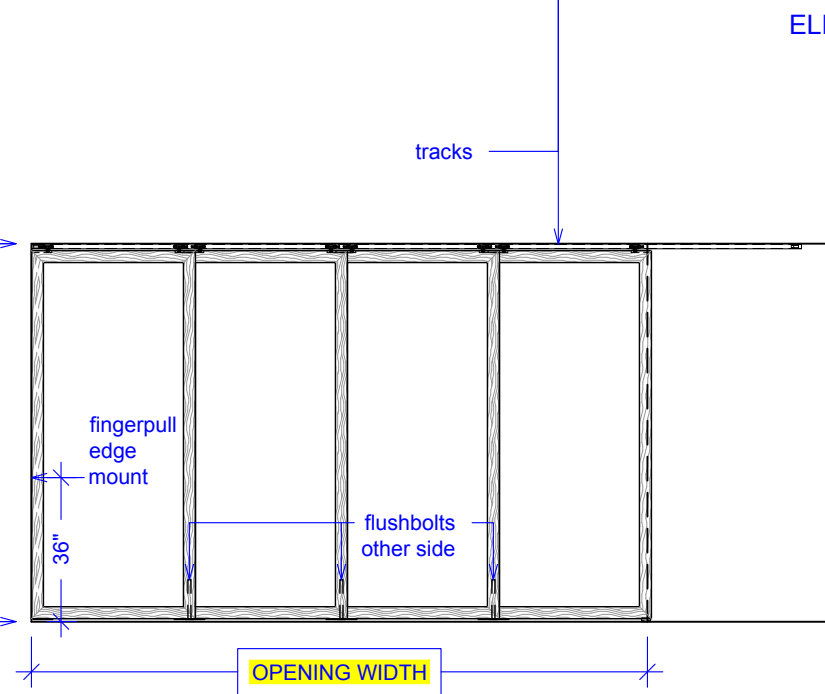
finished floor



PLAN: open



PLAN: closed



ELEVATION: closed

OPENING HEIGHT

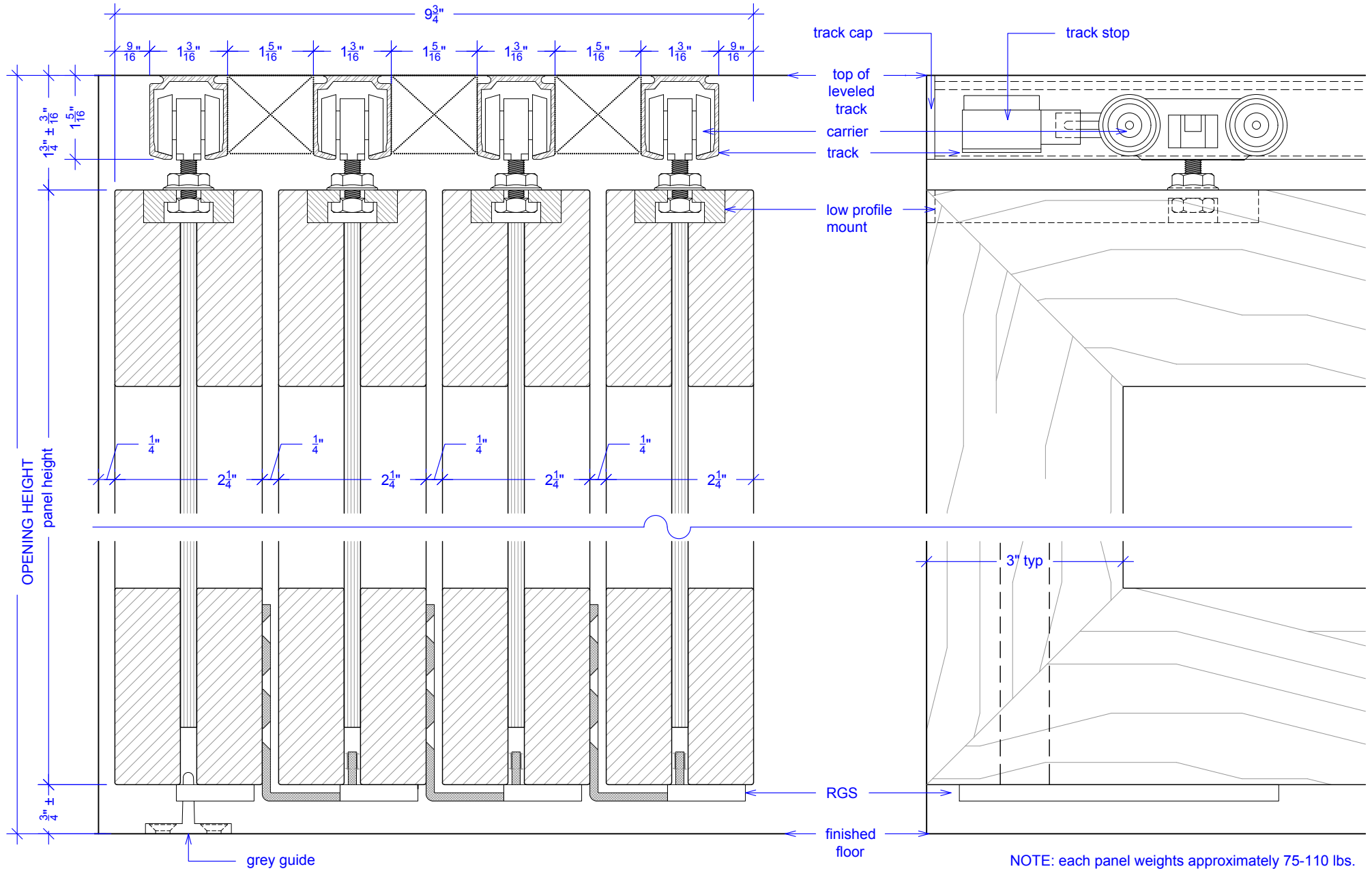
OPENING WIDTH

Sliding Wing Wall, 4 Panels

(SWW4-RD)

SECTION

RAYDOOR STANDARD
SYSTEM DRAWINGS
©2020



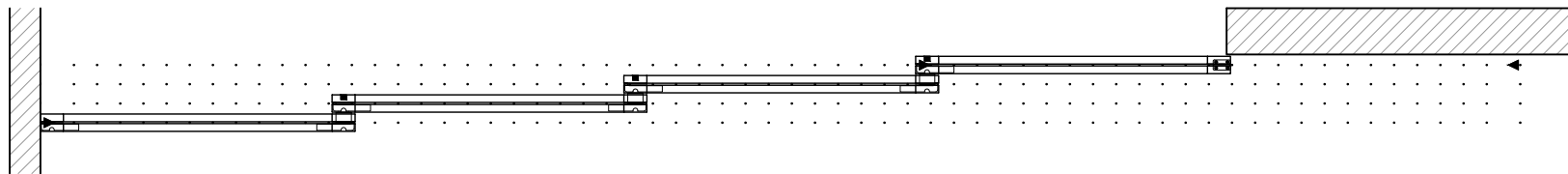
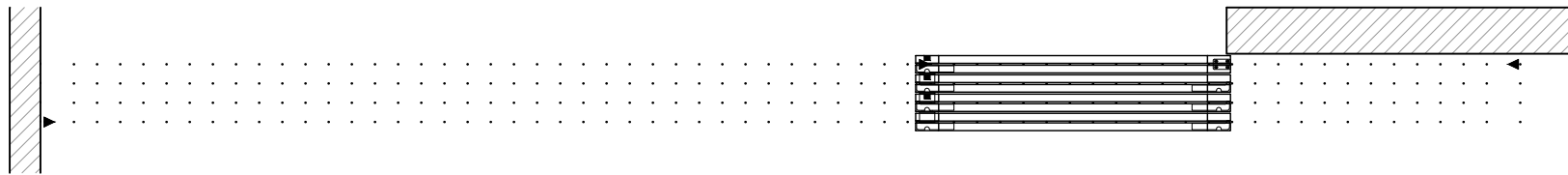
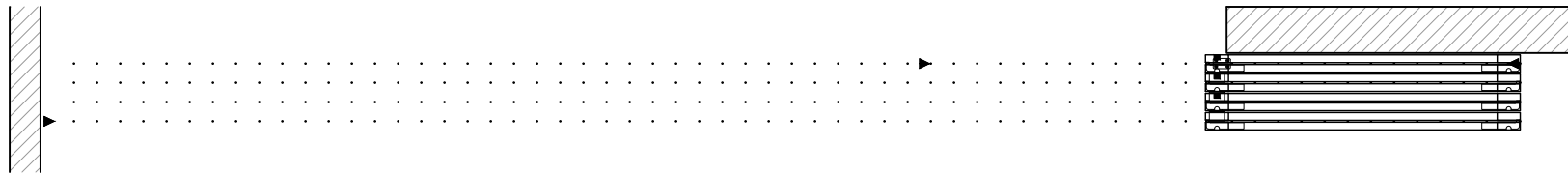
NOTE: each panel weights approximately 75-110 lbs.
Secure tracks accordingly.

Sliding Wing Wall, 4 Panels

(SWW4-RD)

OPERATION OVERVIEW

RAYDOOR STANDARD
SYSTEM DRAWINGS
©2020



KEY:

▶ track stop

□ RGS hook

▭ RGS stop

■ flushbolt