

Sliding Wing Wall w/ Soft-Close, 3 Panels

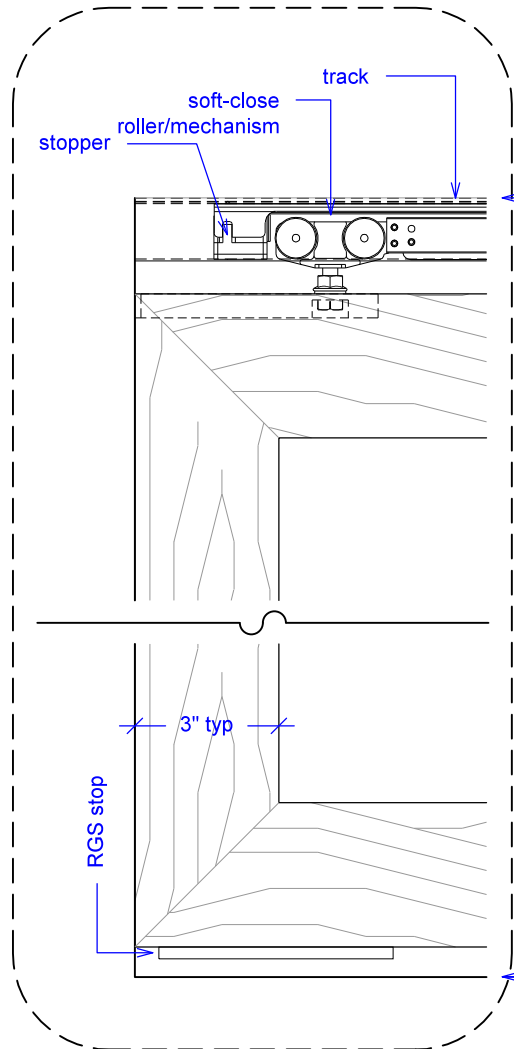
(Sww3-SC)

ELEVATION

RAYDOOR STANDARD
SYSTEM DRAWINGS
©2020



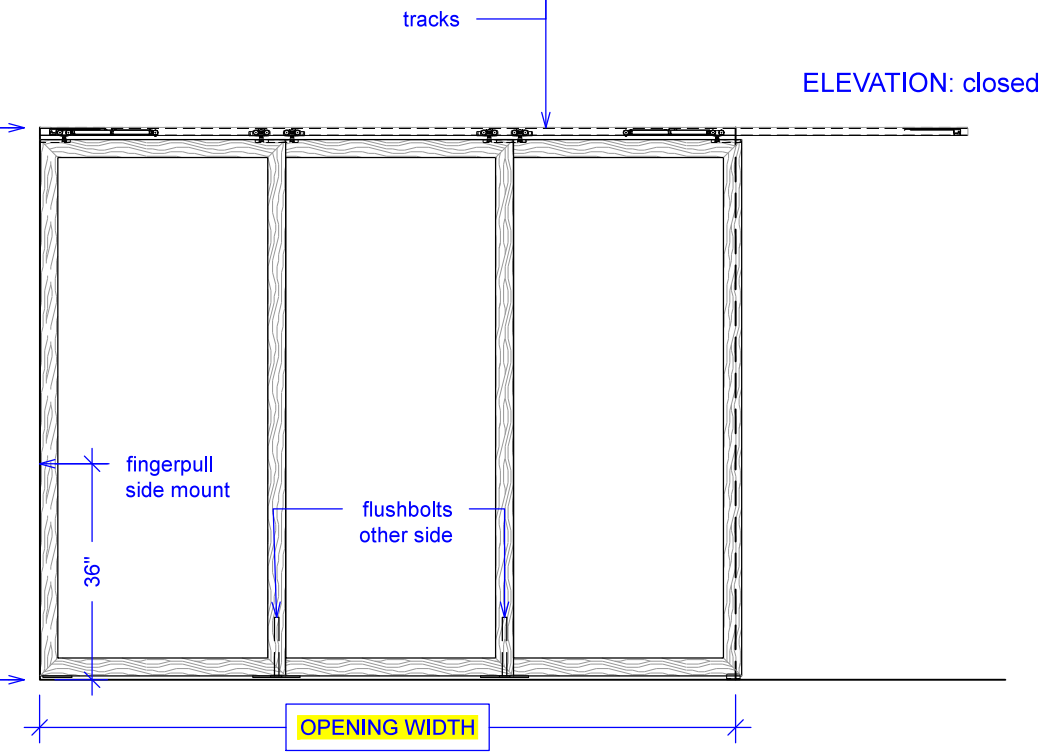
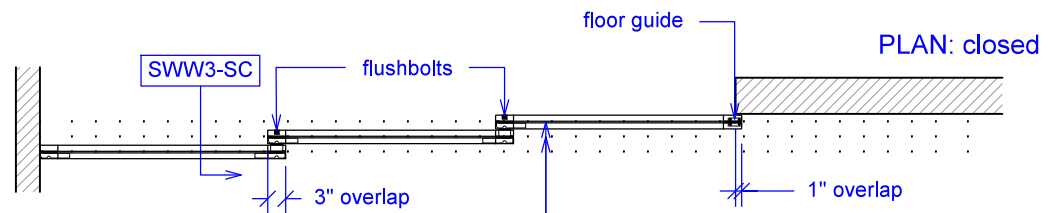
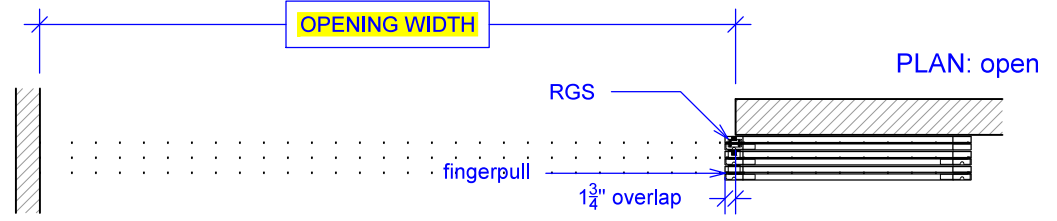
YOUR OPENING HEIGHT = PANEL + 2⁵/₈"
YOUR OPENING WIDTH = (3 x PANEL) - 7"



top of leveled track

finished floor

OPENING HEIGHT

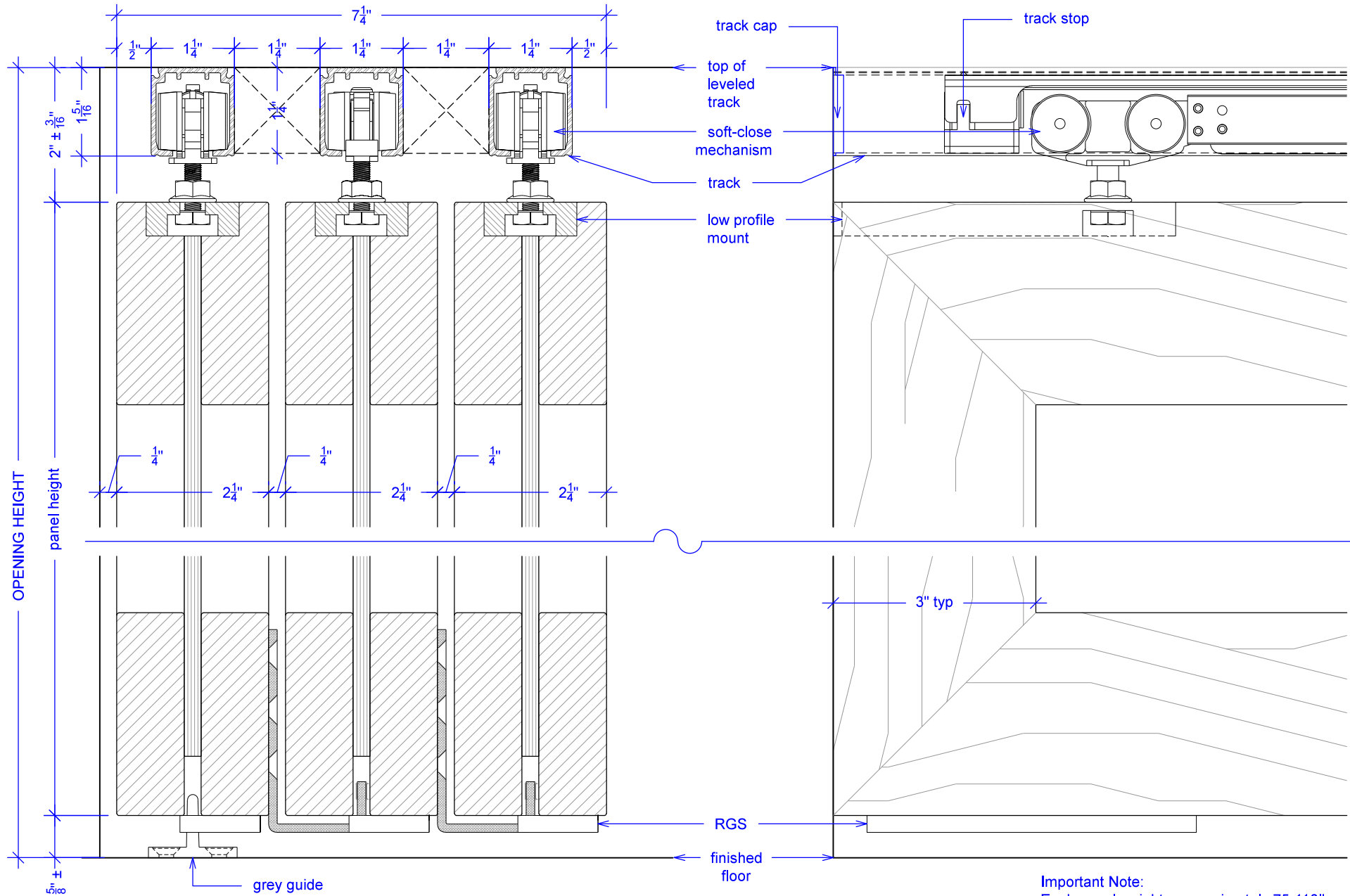


Sliding Wing Wall w/ Soft-Close, 3 Panels

(Sww3-SC)

SECTION

RAYDOOR STANDARD
SYSTEM DRAWINGS
©2020



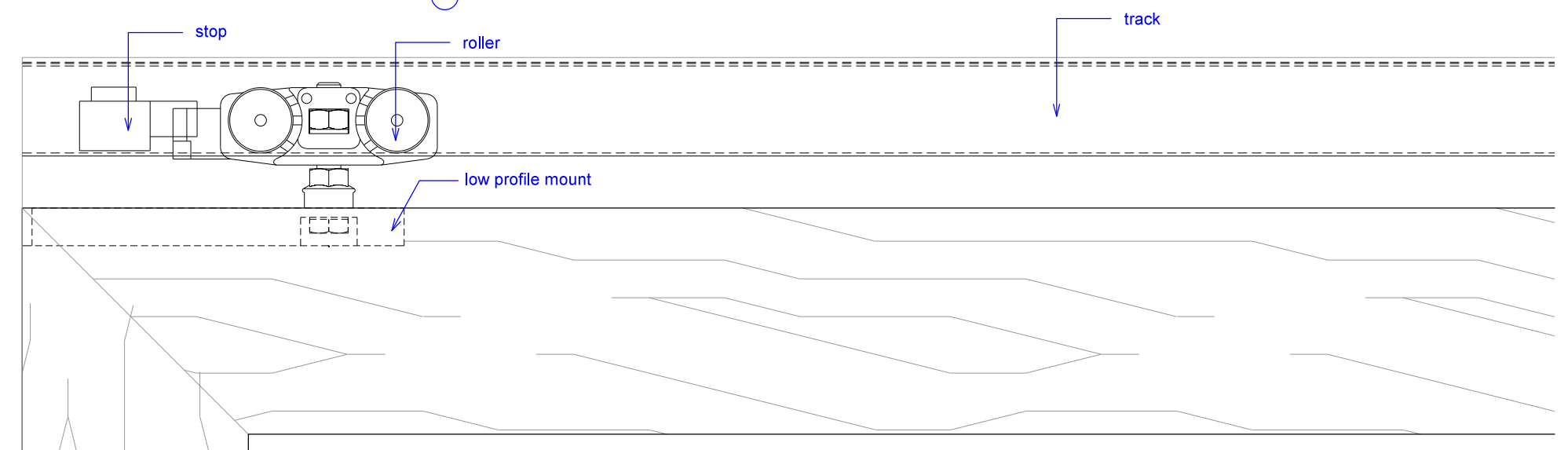
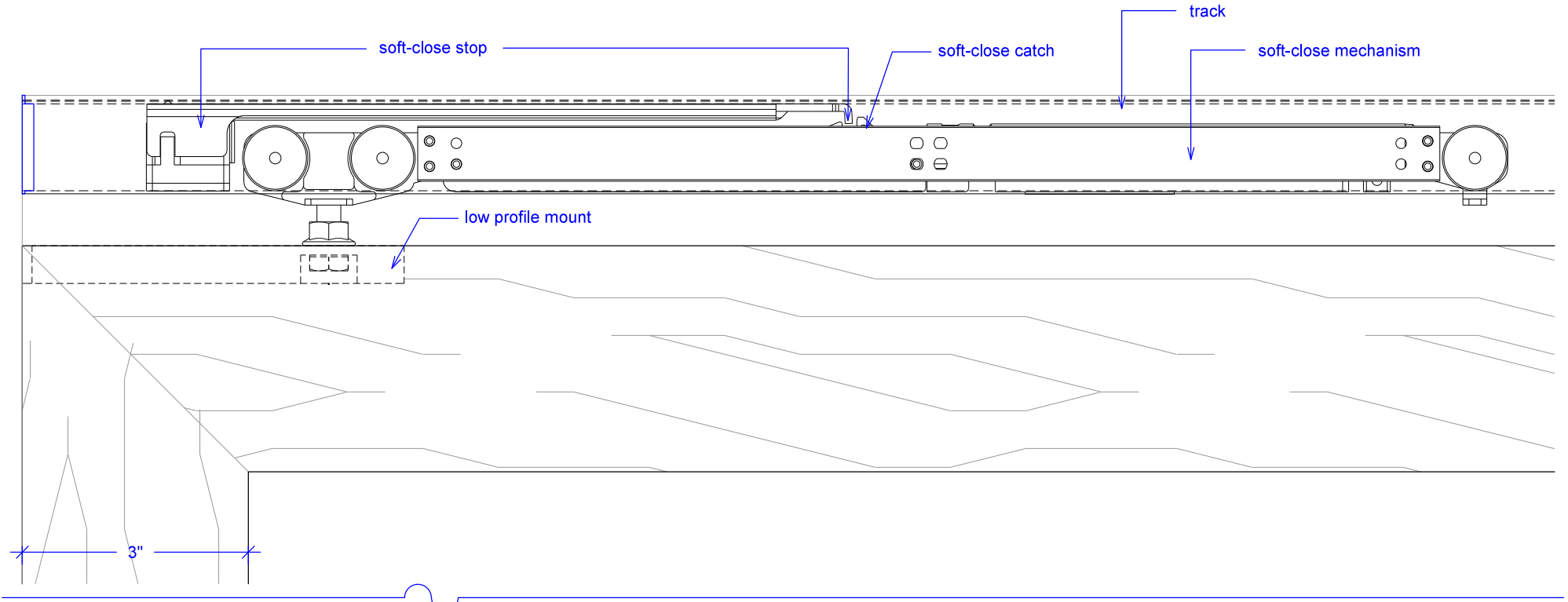
Important Note:
Each panel weights approximately 75-110lbs.
Secure tracks accordingly.

Sliding Wing Wall w/ Soft-Close, 3 Panels

(SWW3-SC)

SOFT-CLOSE HARDWARE

RAYDOOR STANDARD
SYSTEM DRAWINGS
©2020

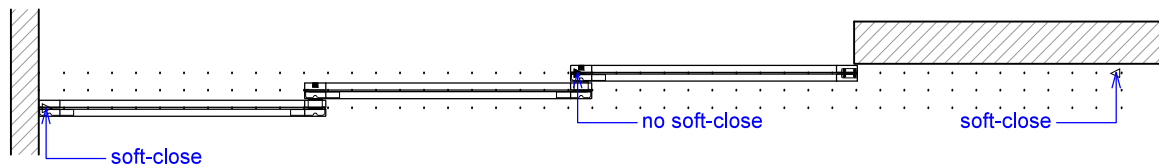
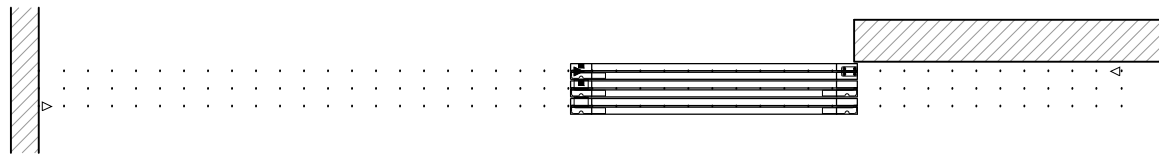
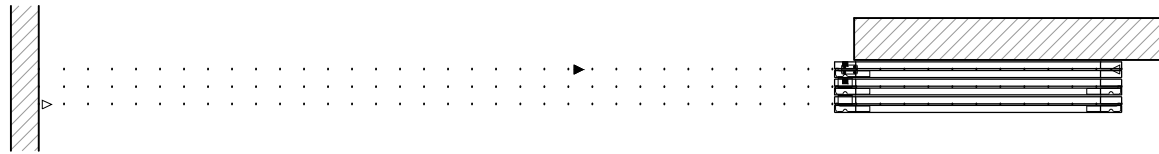


Sliding Wing Wall w/ Soft-Close, 3 Panels

(Sww3-SC)

OPERATION OVERVIEW

RAYDOOR STANDARD
SYSTEM DRAWINGS
©2020



KEY:

- ▷ stopper / release device
- ▶ track stop
- RGS hook
- ┌ RGS stop
- flushbolt