

# Sliding Wing Wall, 3 Panels

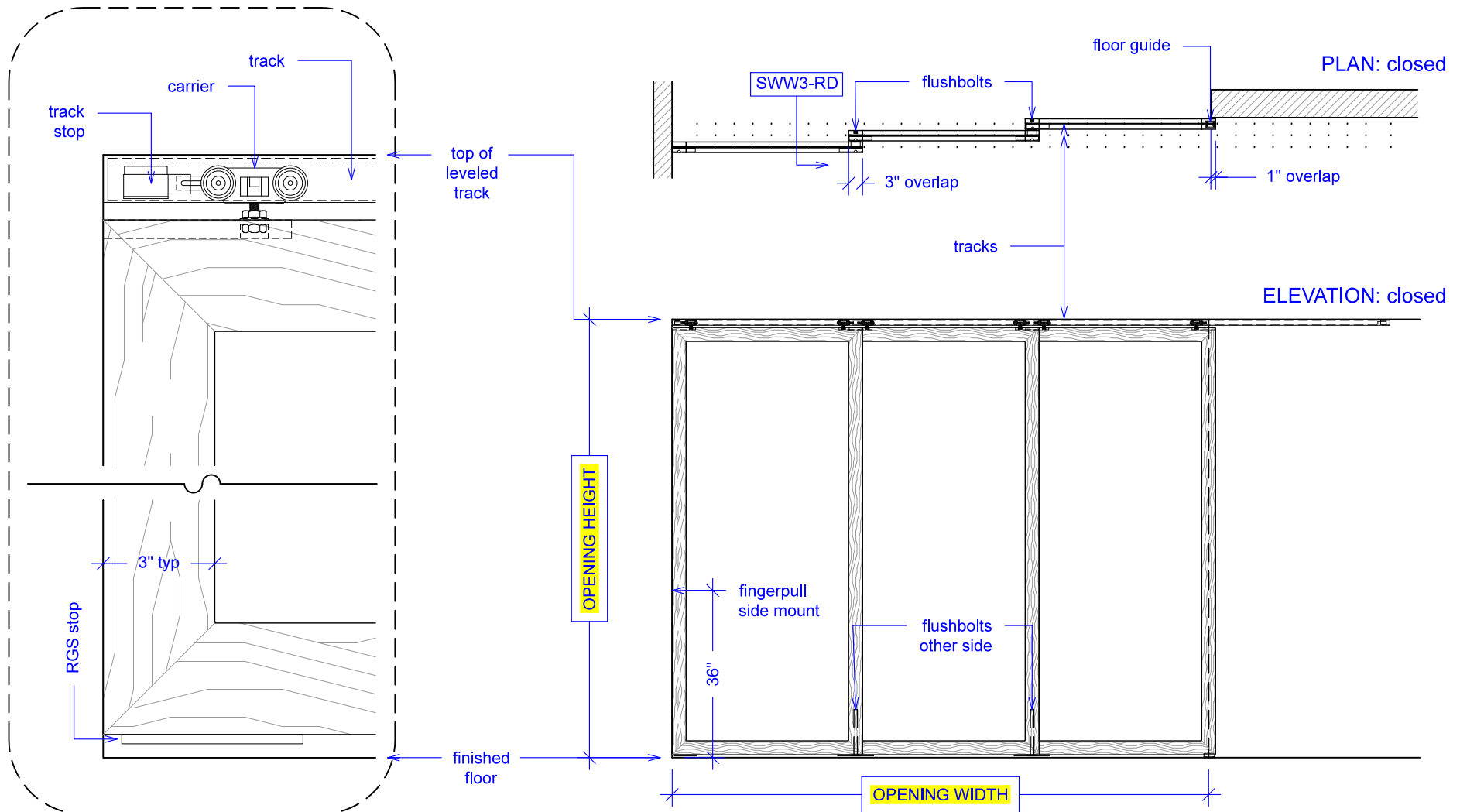
(SWW3-RD)

ELEVATION

RAYDOOR STANDARD  
SYSTEM DRAWINGS  
©2020



YOUR OPENING HEIGHT = PANEL + 2 $\frac{1}{2}$ "  
YOUR OPENING WIDTH = (3 x PANEL) - 7"

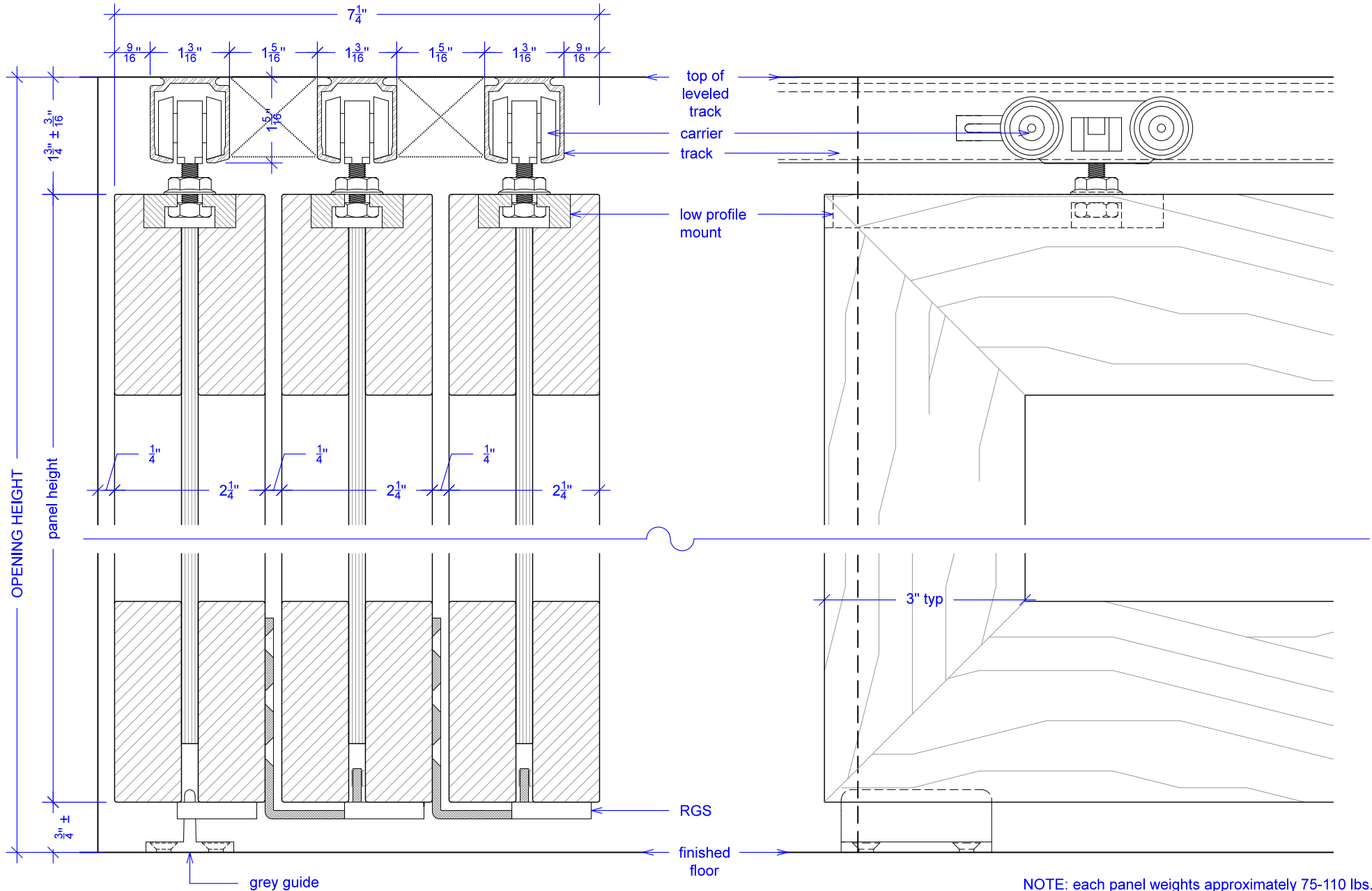


# Sliding Wing Wall, 3 Panels

(SWW3-RD)

## SECTION

RAYDOOR STANDARD  
SYSTEM DRAWINGS  
© 2020

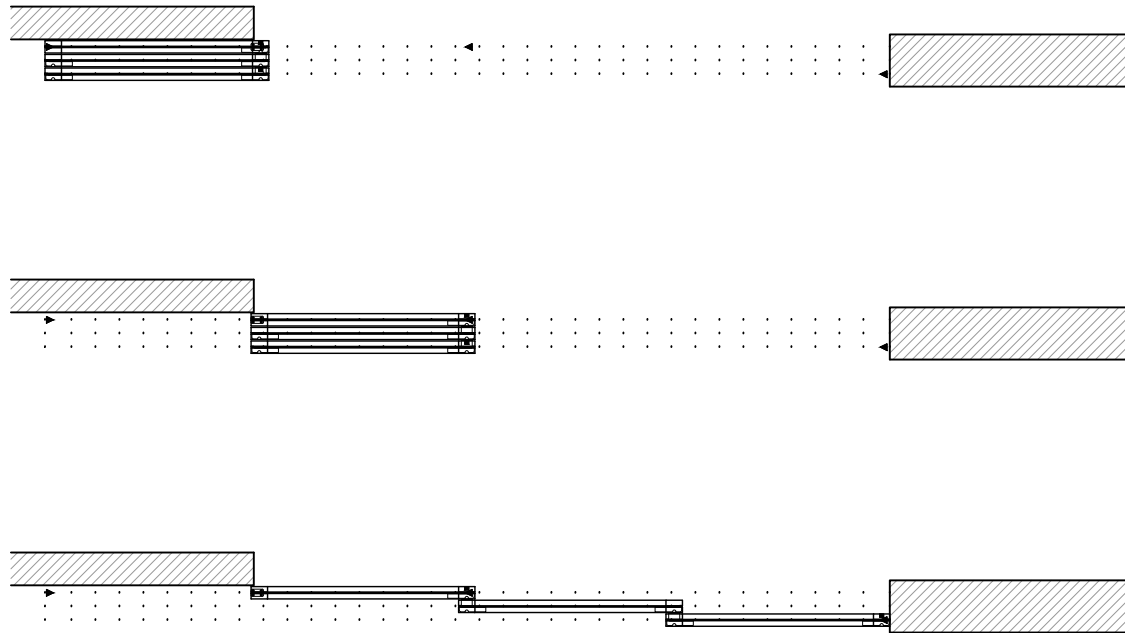


# Sliding Wing Wall, 3 Panels

(SWW3-RD)

## OPERATION OVERVIEW

RAYDOOR STANDARD  
SYSTEM DRAWINGS  
©2020



### KEY:

▶ track stop

□ RGS hook

⌋ RGS stop

■ flushbolt