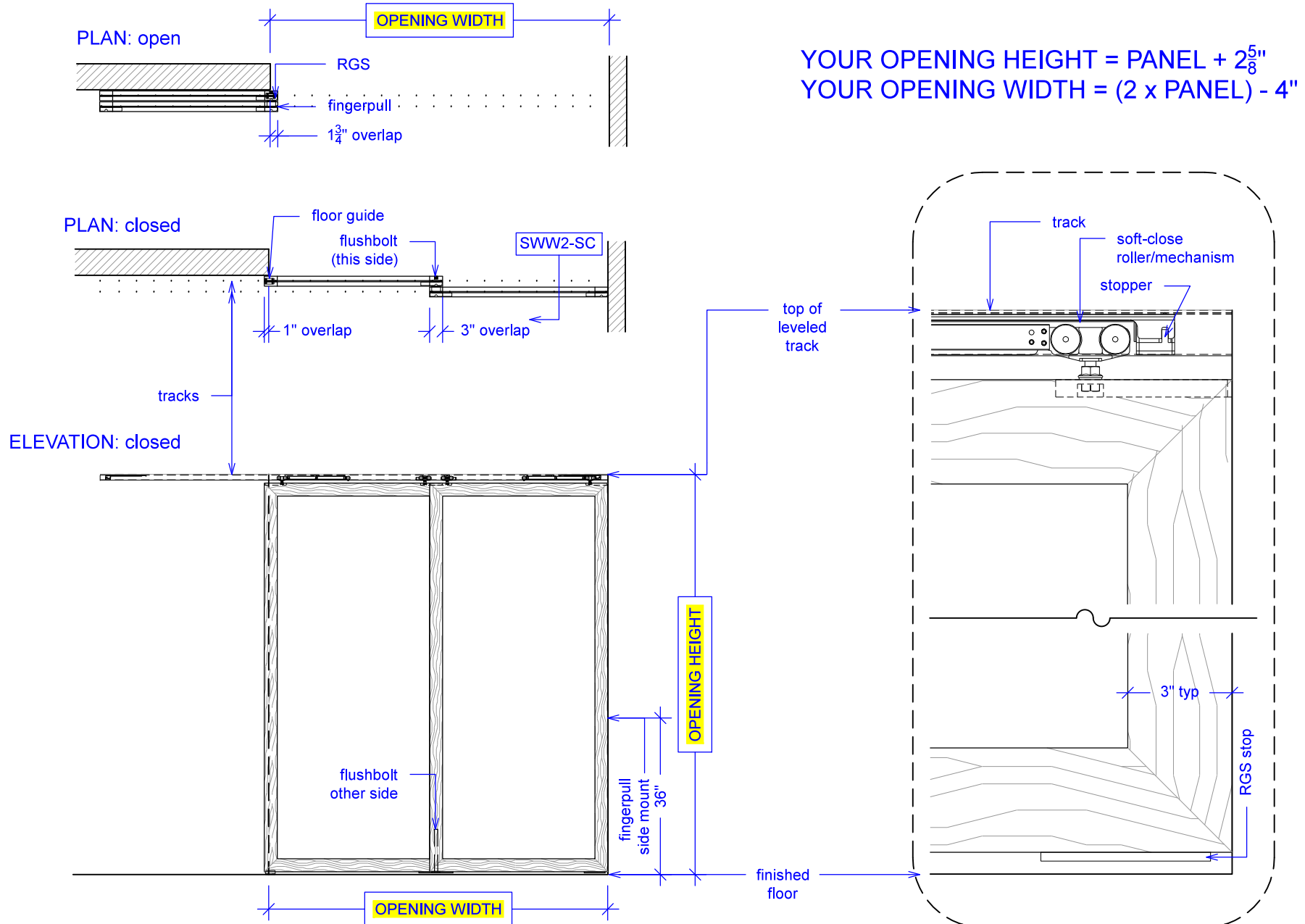


# Sliding Wing Wall w/ Soft-Close, 2 Panels

(SWW2-SC)

ELEVATION

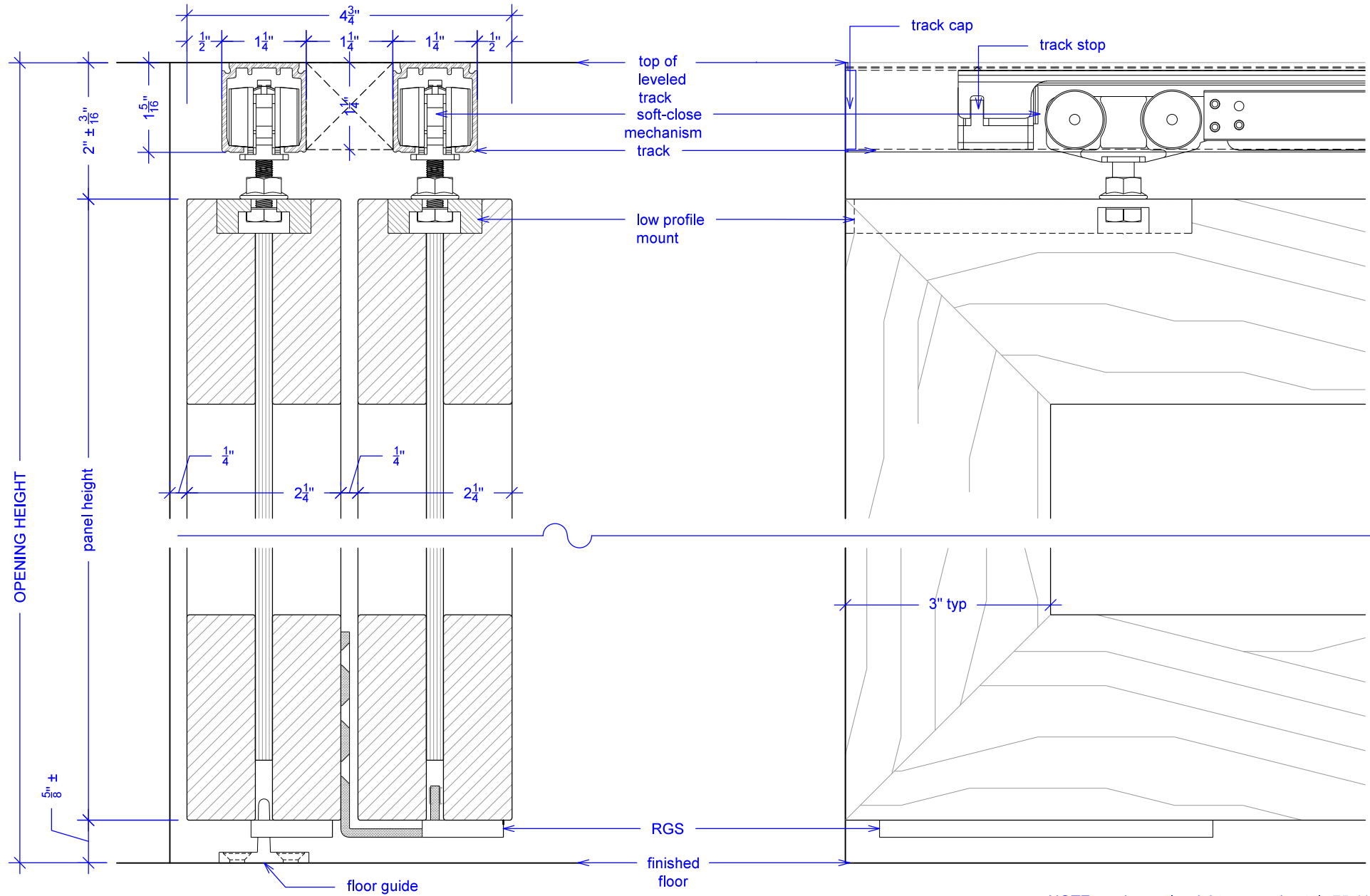
RAYDOOR STANDARD  
SYSTEM DRAWINGS  
©2020



# Sliding Wing Wall w/ Soft-Close, 2 Panels

(SWW2-SC)  
SECTION

RAYDOOR STANDARD  
SYSTEM DRAWINGS  
©2020



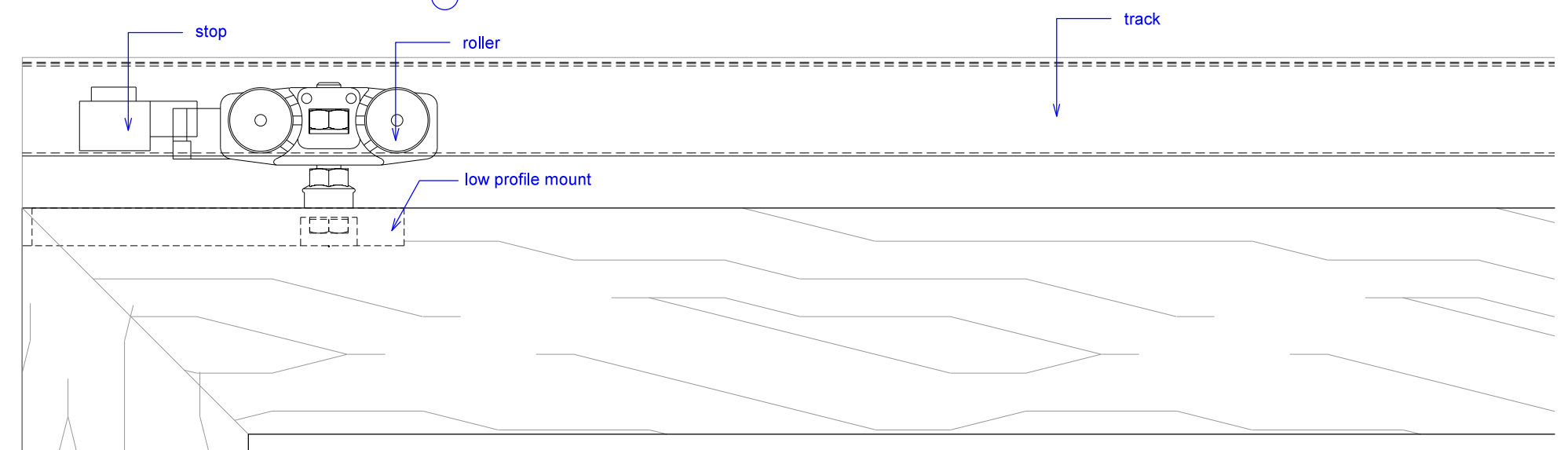
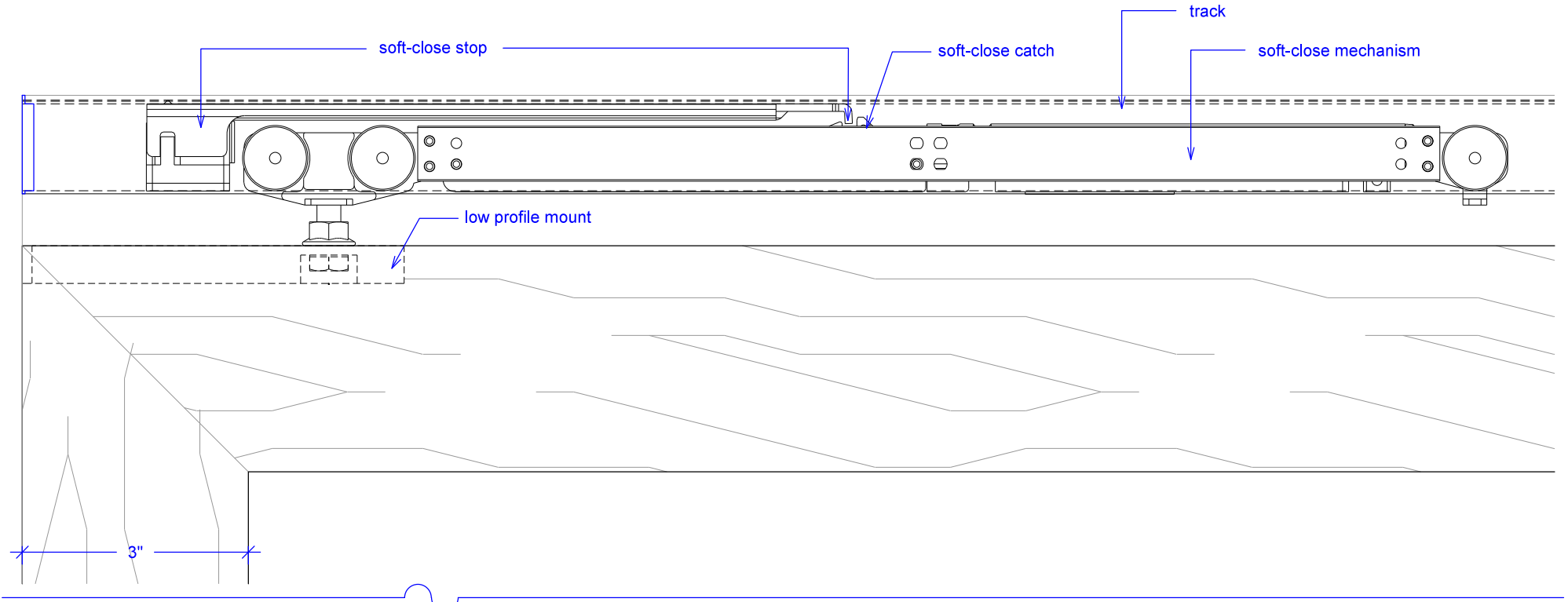
NOTE: each panel weights approximately 75-110 lbs.  
Secure tracks accordingly.

# Sliding Wing Wall w/ Soft-Close, 2 Panels

(SWW2-SC)

## SOFT-CLOSE HARDWARE

RAYDOOR STANDARD  
SYSTEM DRAWINGS  
©2020

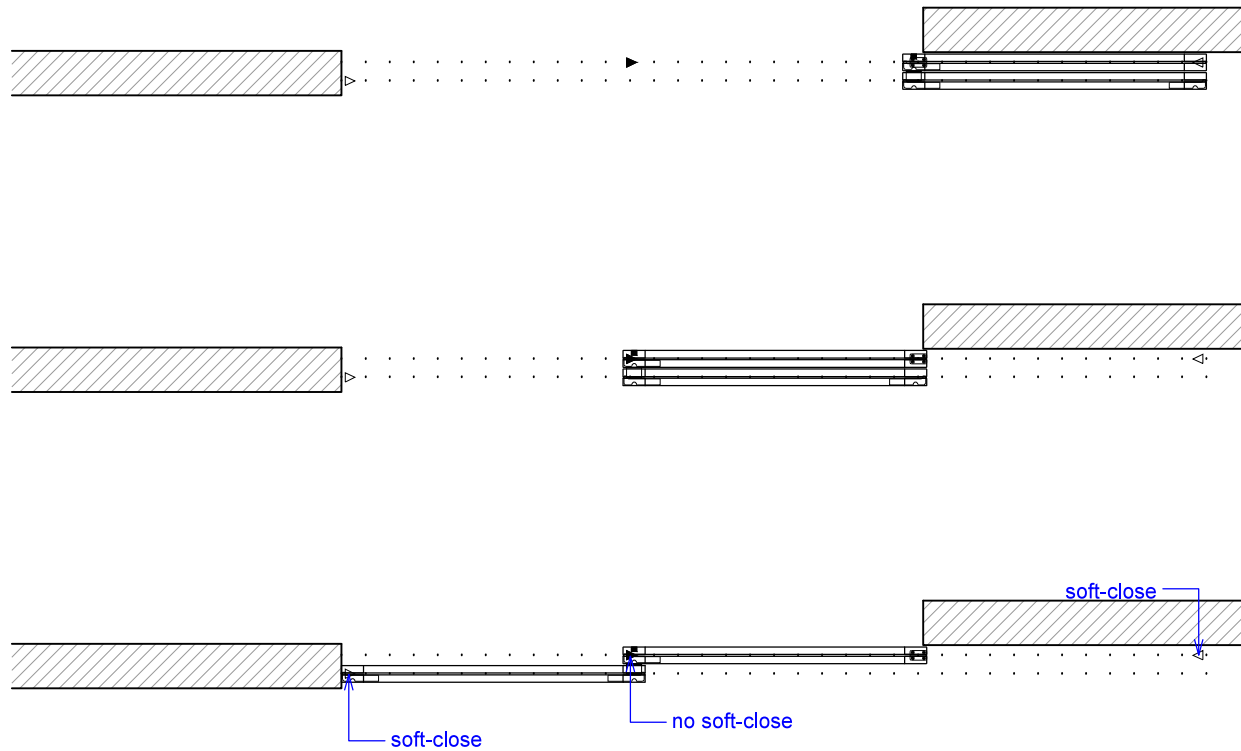


# Sliding Wing Wall w/ Soft-Close, 2 Panels

(SWW2-SC)

## OPERATION OVERVIEW

RAYDOOR STANDARD  
SYSTEM DRAWINGS  
©2020



**KEY:**

stopper / release device	track stop	floor guide	RGS hook	RGS stop	flushbolt
--------------------------	------------	-------------	----------	----------	-----------