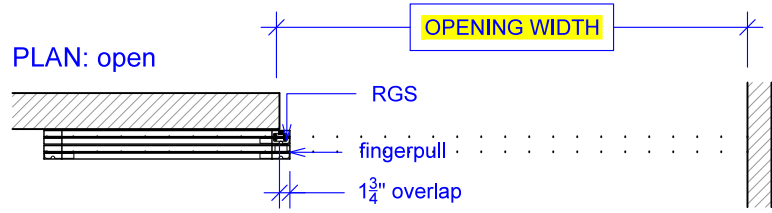


Sliding Wing Wall, 2 Panels

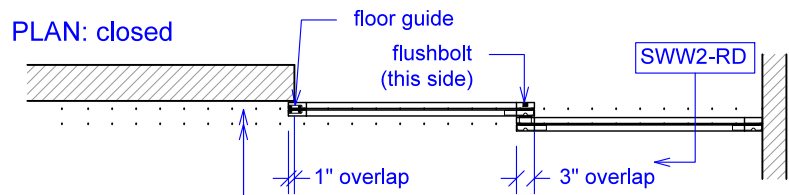
(SWW2-RD)

ELEVATION

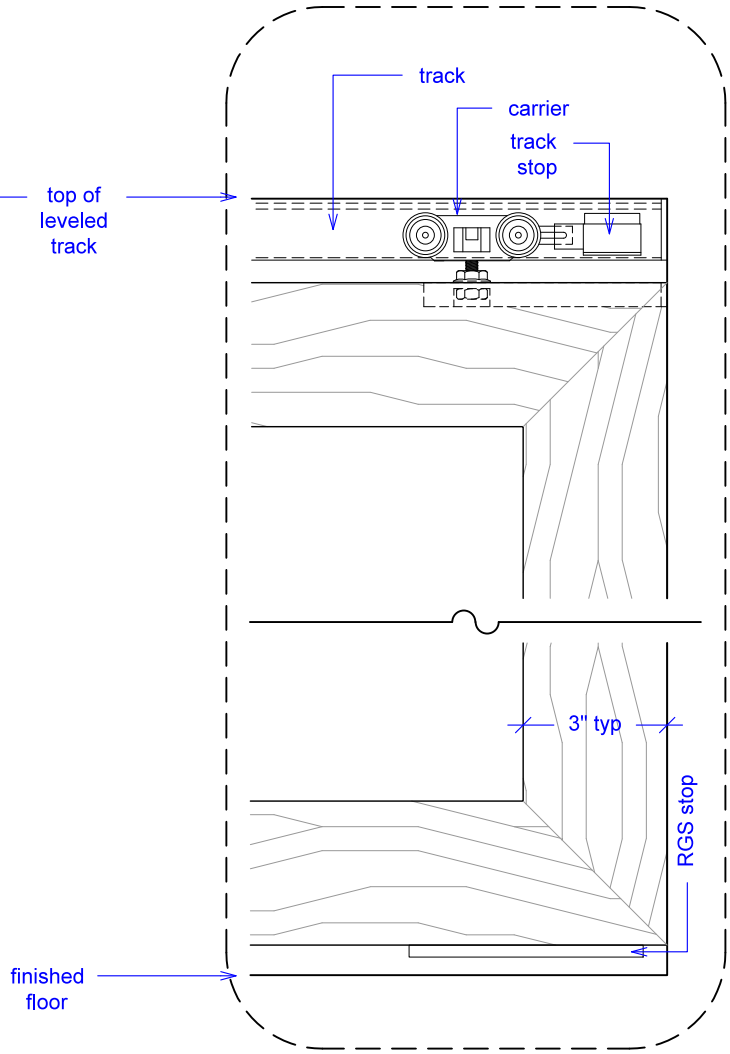
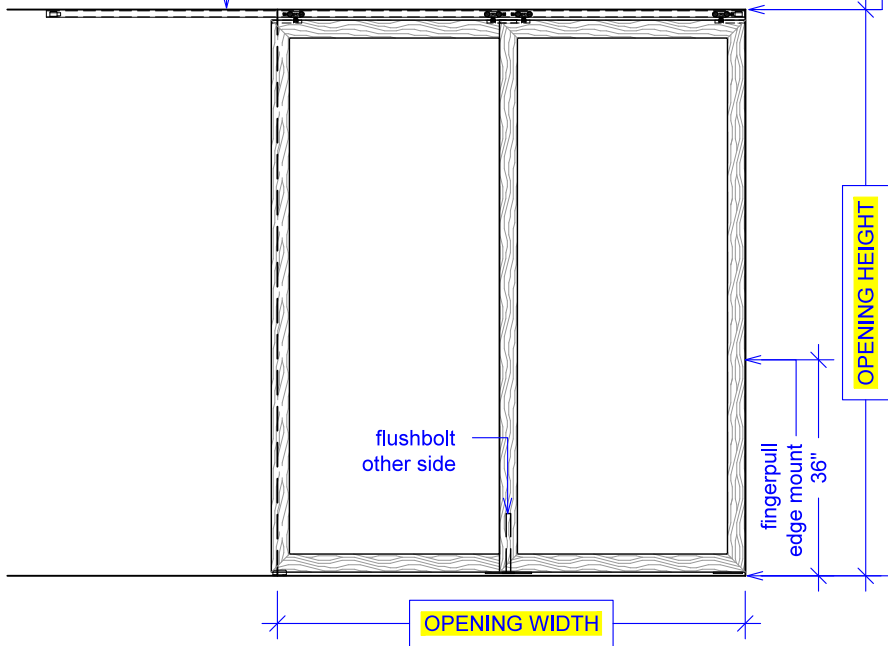
RAYDOOR STANDARD
SYSTEM DRAWINGS
©2020



YOUR OPENING HEIGHT = PANEL + 2 3/8"
YOUR OPENING WIDTH = (2 x PANEL) - 4"



ELEVATION: closed

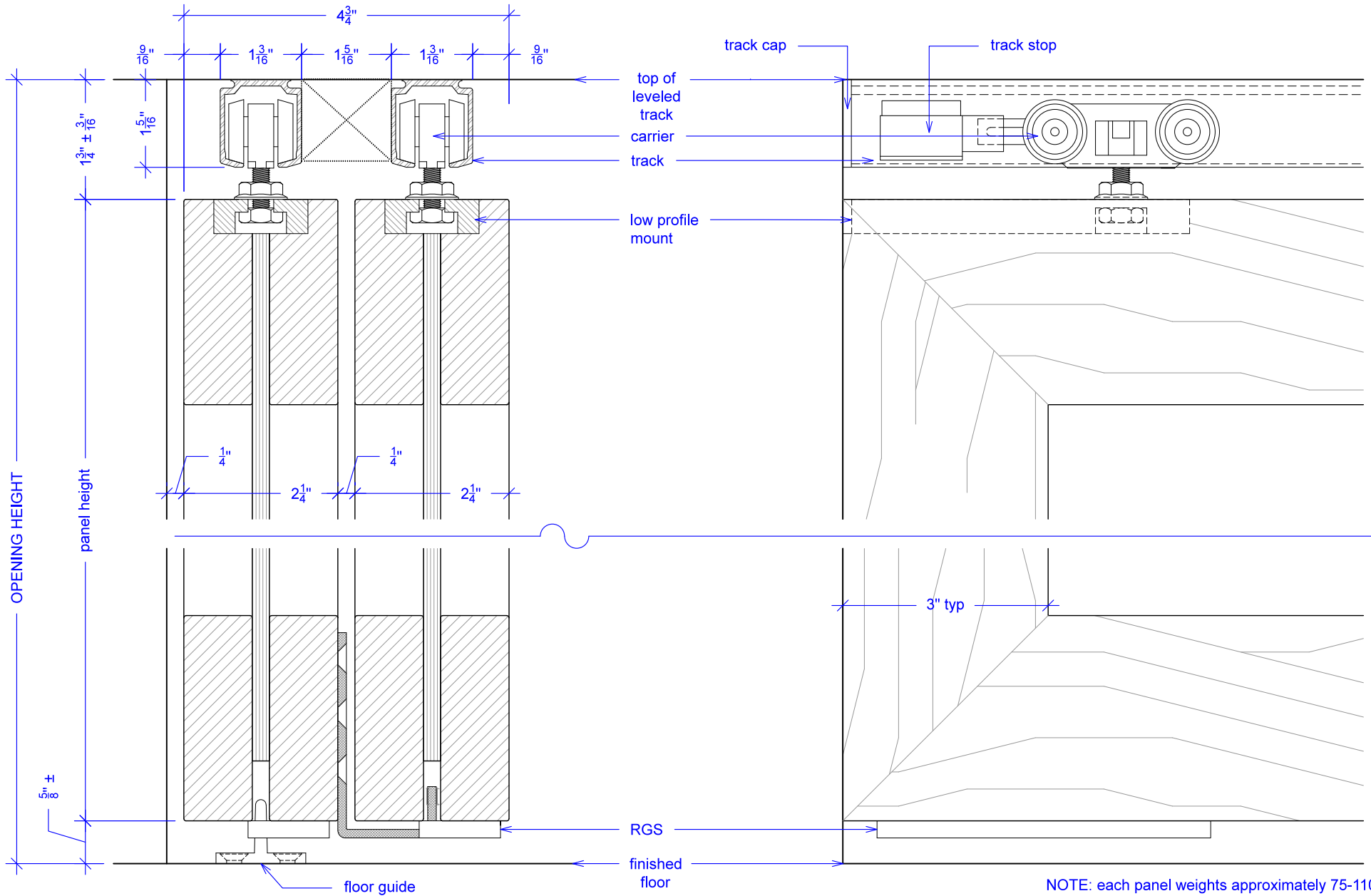
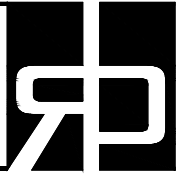


Sliding Wing Wall, 2 Panels

(SWW2-RD)

SECTION

RAYDOOR STANDARD
SYSTEM DRAWINGS
©2020



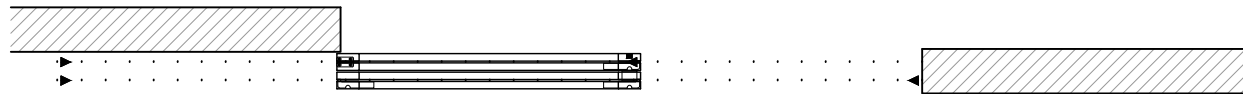
NOTE: each panel weights approximately 75-110 lbs.
Secure tracks accordingly.

Sliding Wing Wall, 2 Panels

(SWW2-RD)

OPERATION OVERVIEW

RAYDOOR STANDARD
SYSTEM DRAWINGS
©2020



KEY:

▶ track stop

□ RGS hook

┌ RGS stop

■ flushbolt