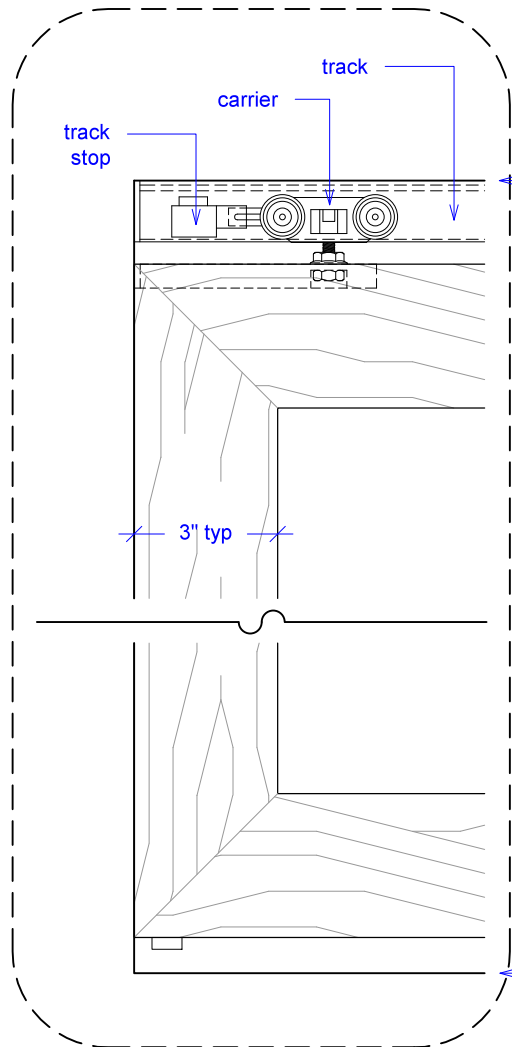


PLAN: open

YOUR OPENING HEIGHT = PANEL + 2-1/2"
YOUR OPENING WIDTH = (PANEL x 5) - 12"

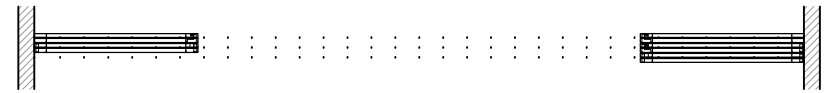


top of leveled track

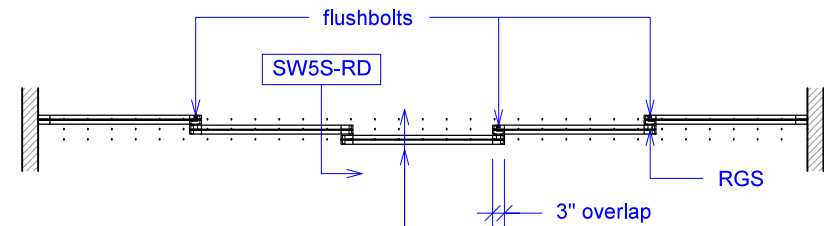
finished floor

OPENING HEIGHT

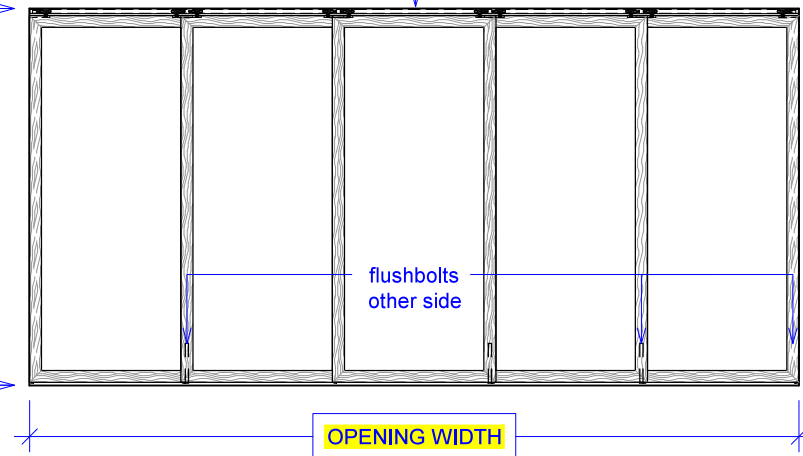
OPENING WIDTH



PLAN: closed



ELEVATION: closed

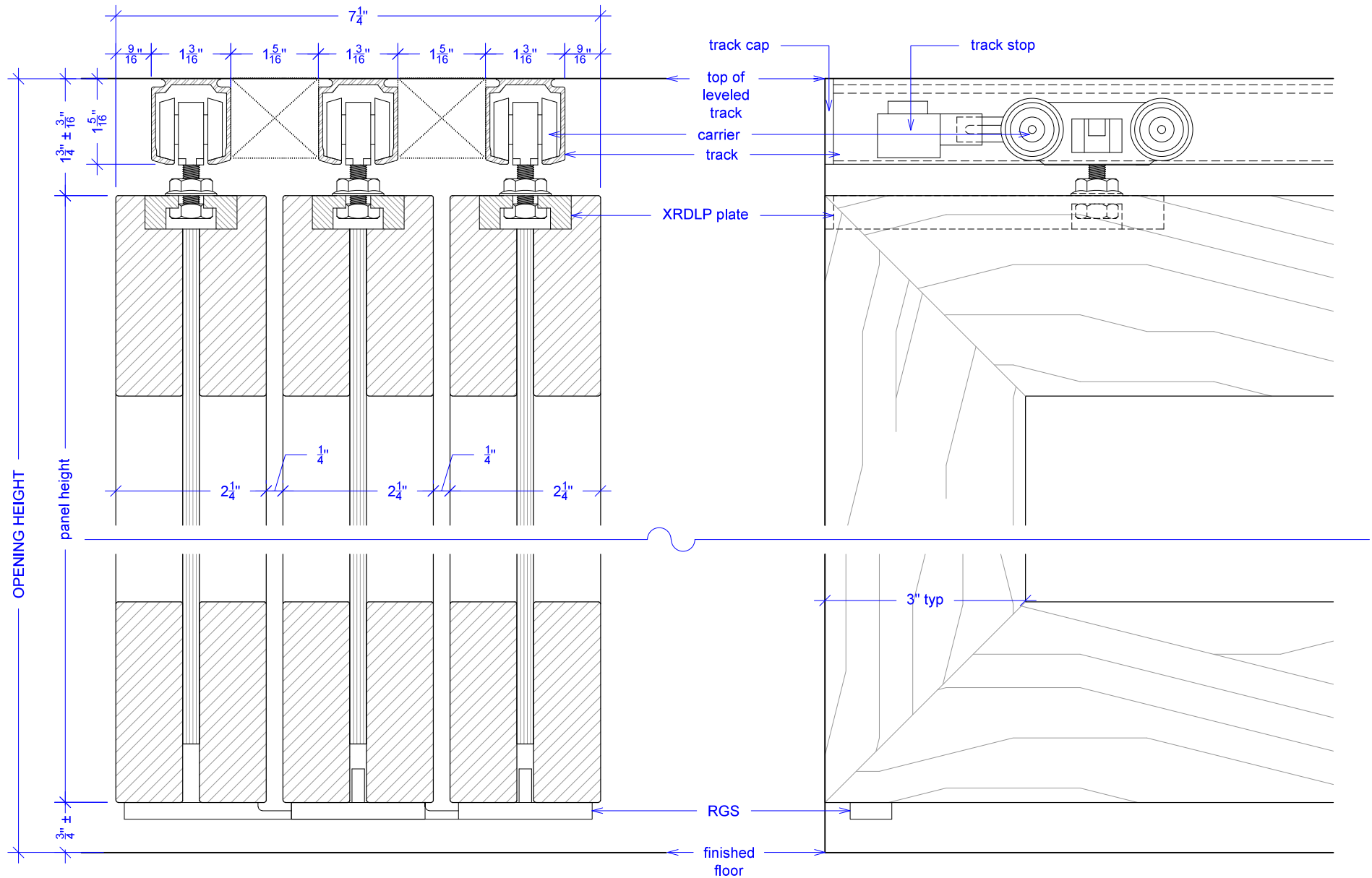


flushbolts
other side

SW5S - 225

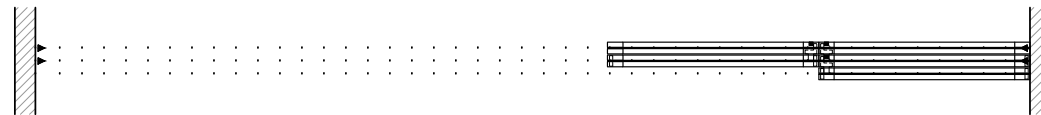
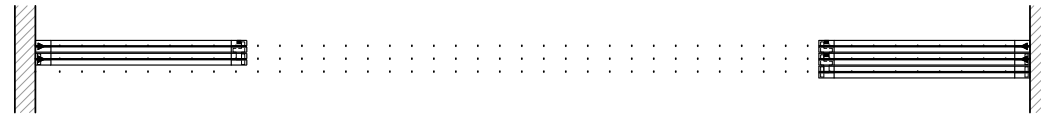


NOTE: each panel weighs approximately 75-110 lbs.
Secure tracks accordingly.










NOTE: each panel weights approximately 75-110 lbs.
Secure tracks accordingly.



KEY:

 track stop	 left RGS hook	 right RGS hook	 RGS stop	 flushbolt
--	---	--	--	---