

Sliding Wall w/ Soft-Close, 5 Panels

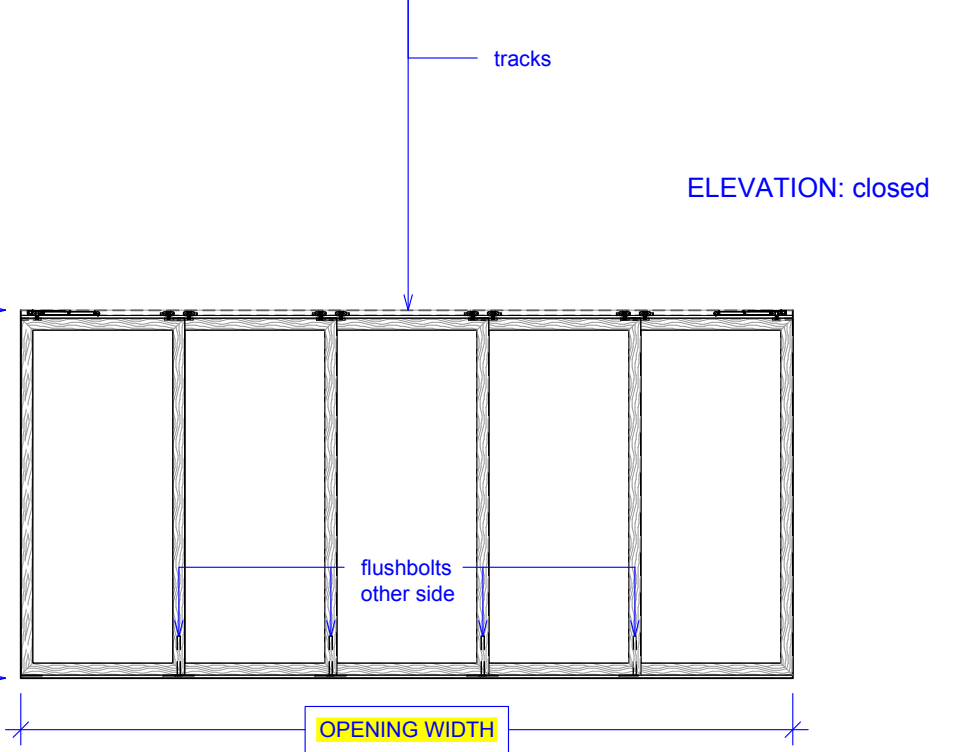
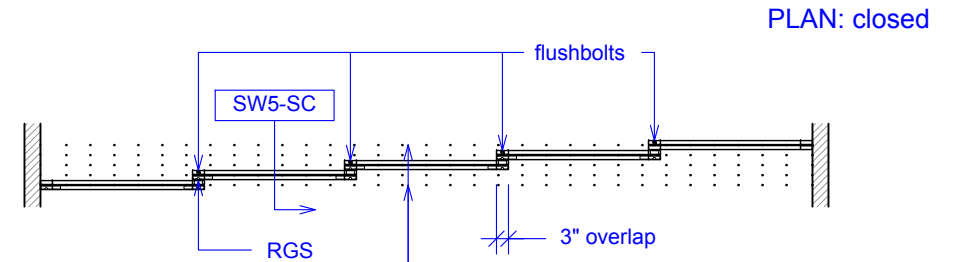
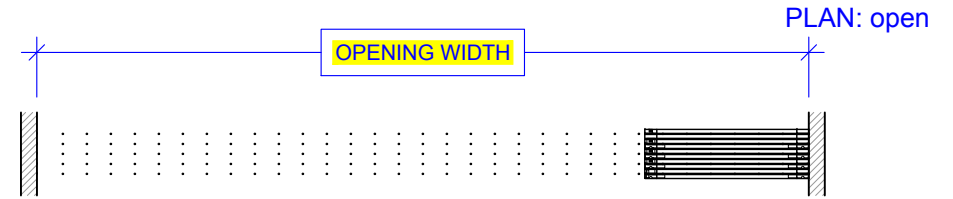
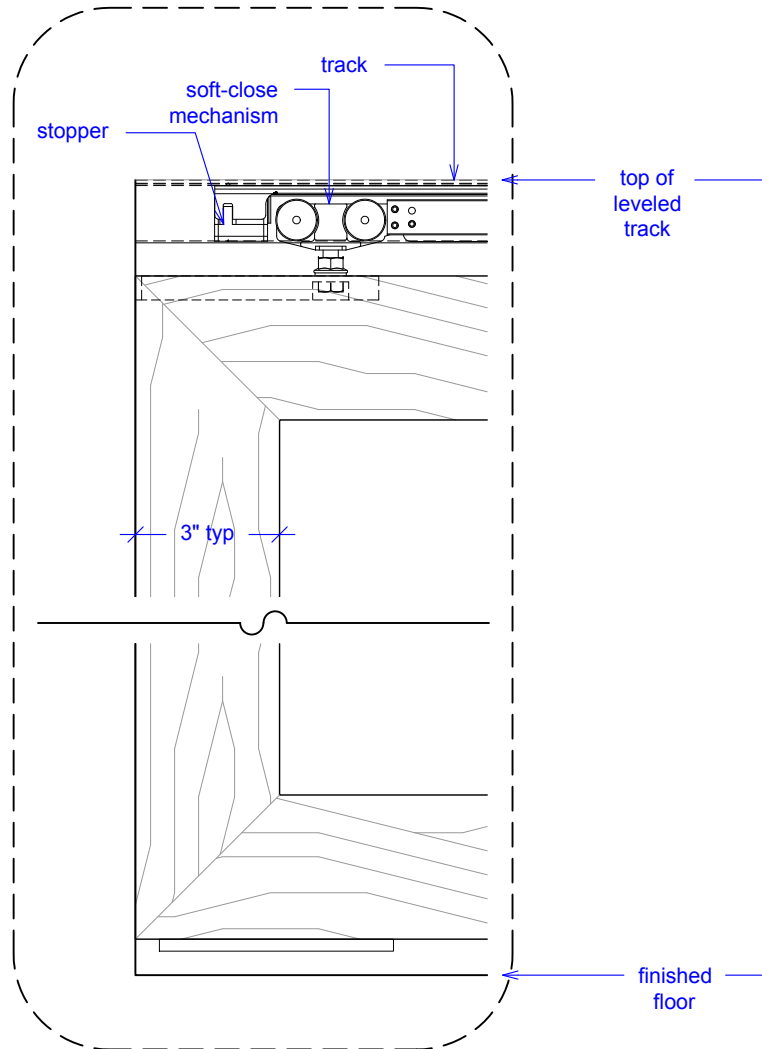
(SW5-SC)

ELEVATION

RAYDOOR STANDARD
SYSTEM DRAWINGS
©2020



YOUR OPENING HEIGHT = PANEL + 2 $\frac{3}{4}$ "
YOUR OPENING WIDTH = (5 x PANEL) - 12"

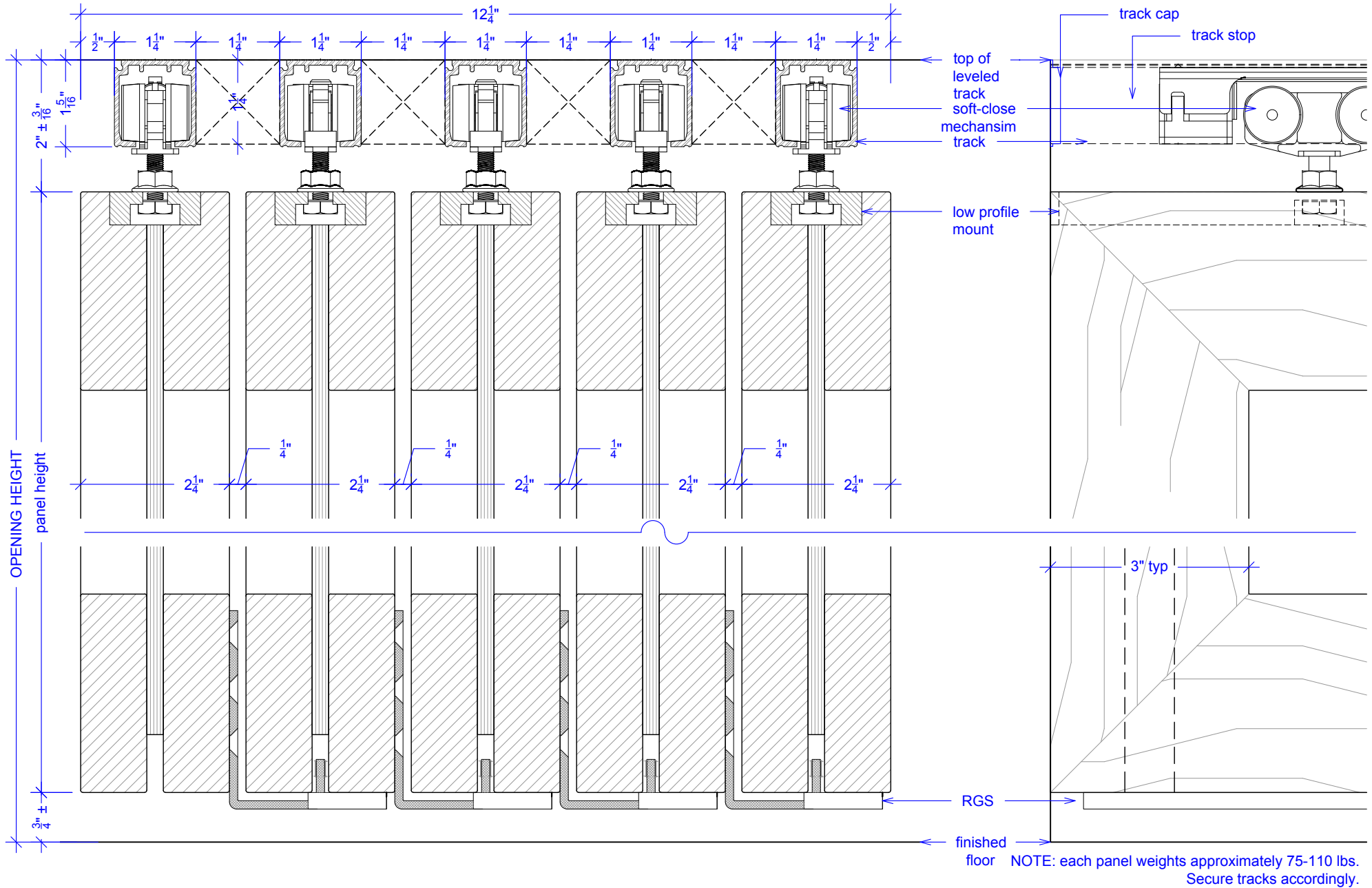


Sliding Wall w/ Soft-Close, 5 Panels

(SW5-SC)

SECTION

RAYDOOR STANDARD
SYSTEM DRAWINGS
©2020

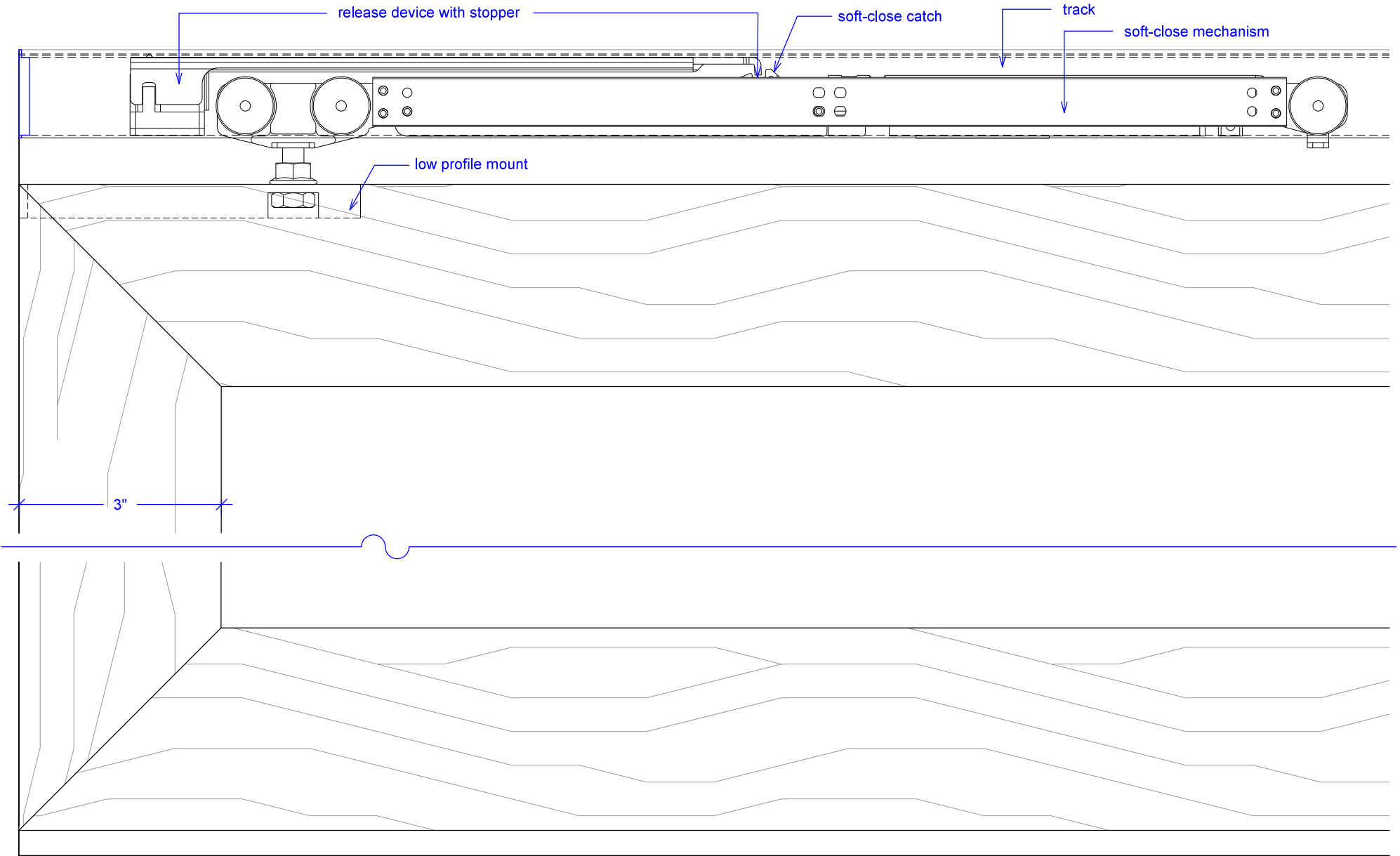


Sliding Wall w/ Soft-Close, 5 Panels

(SW5-SC)

SOFT-CLOSE HARDWARE

RAYDOOR STANDARD
SYSTEM DRAWINGS
©2020

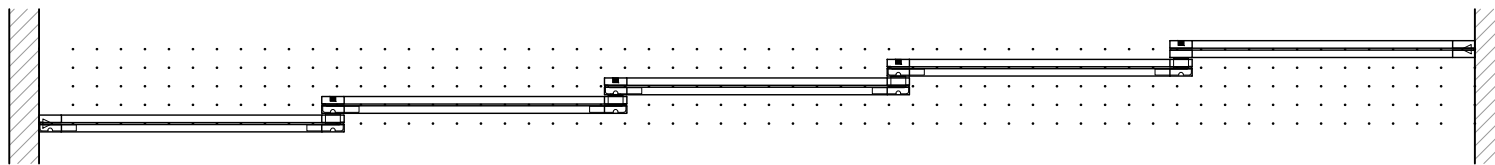


Sliding Wall w/ Soft-Close, 5 Panels

(SW5-SC)

OPERATION OVERVIEW

RAYDOOR STANDARD
SYSTEM DRAWINGS
©2020



KEY:

- ▷ stopper / release device
- RGS hook
- ┌ RGS stop
- flushbolt