

Sliding Wall, 5 Panels

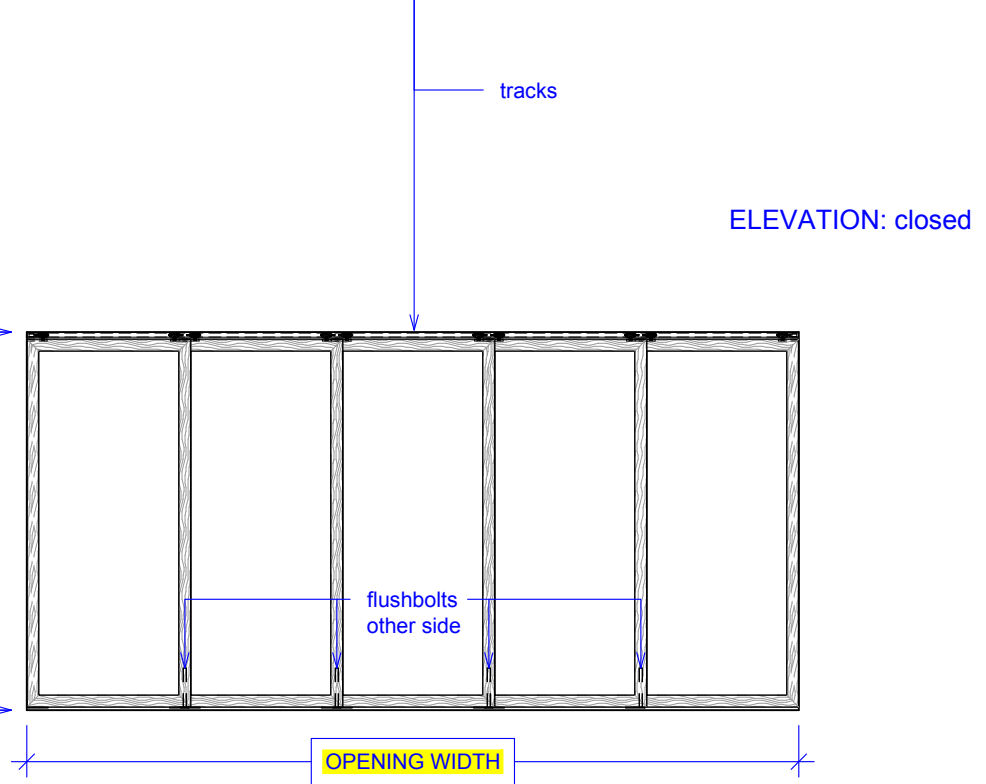
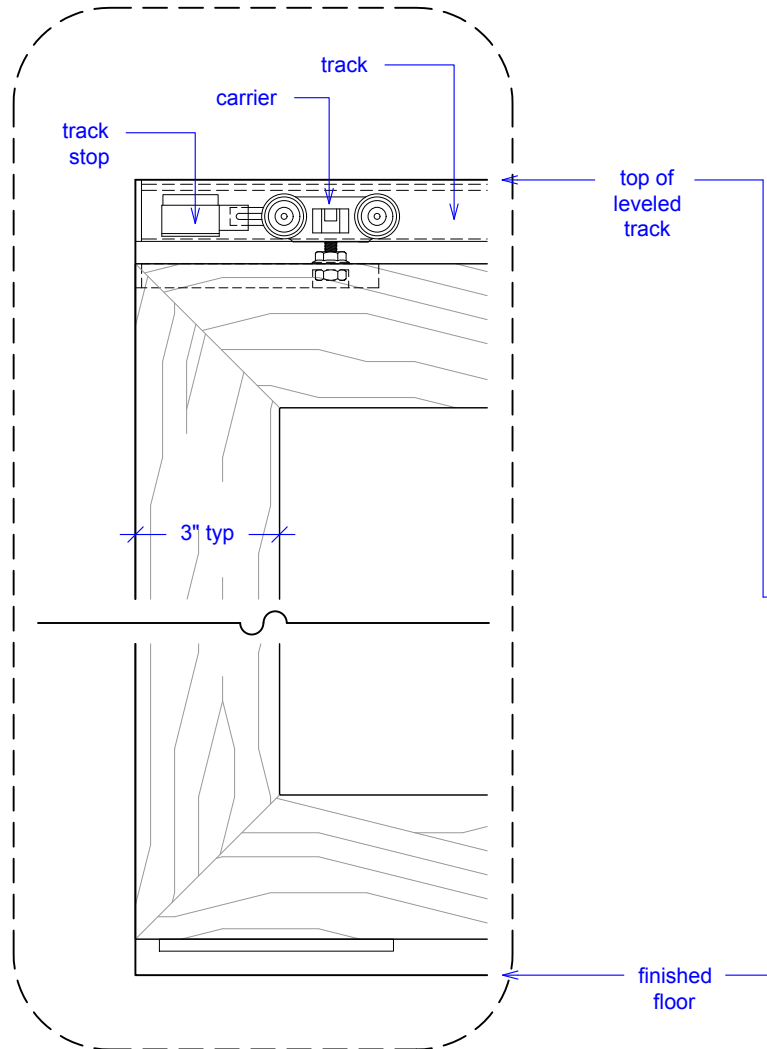
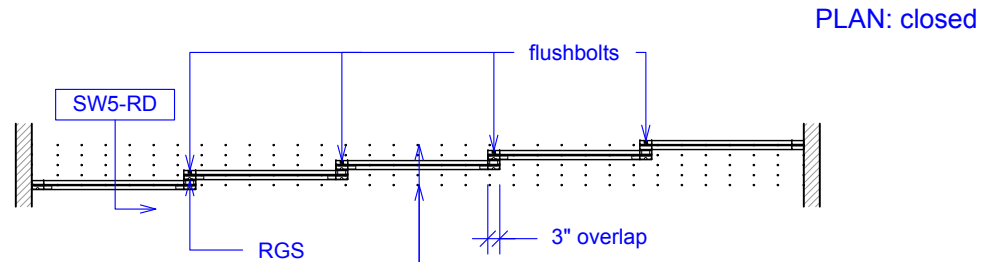
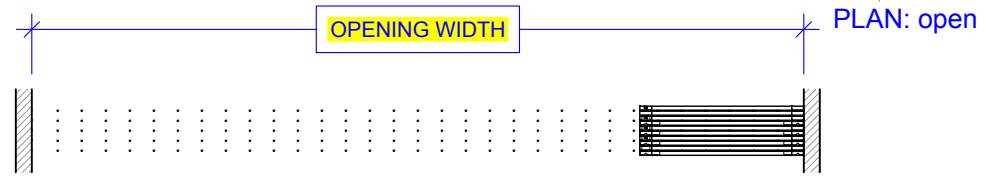
(SW5-RD)

ELEVATION

RAYDOOR STANDARD
SYSTEM DRAWINGS
©2020



YOUR OPENING HEIGHT = PANEL + $2\frac{1}{2}$ "
YOUR OPENING WIDTH = (5 x PANEL) - 12"

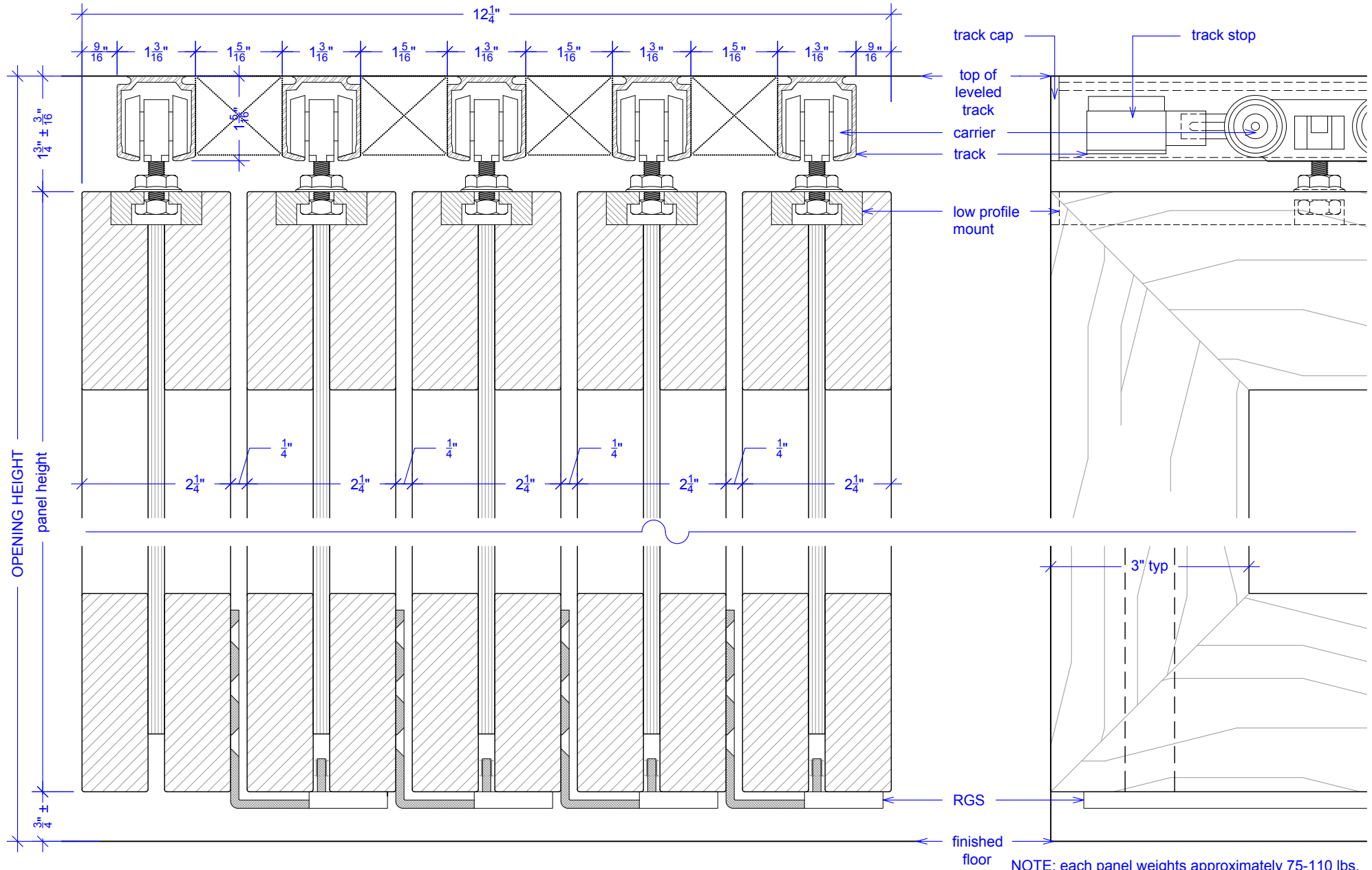


Sliding Wall, 5 Panels

(SW5-RD)

SECTION

RAYDOOR STANDARD
SYSTEM DRAWINGS
©2020



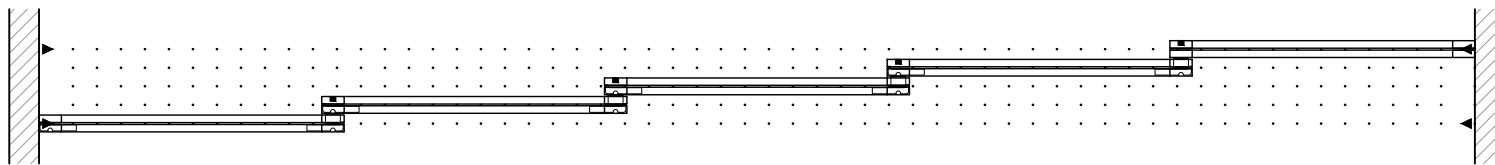
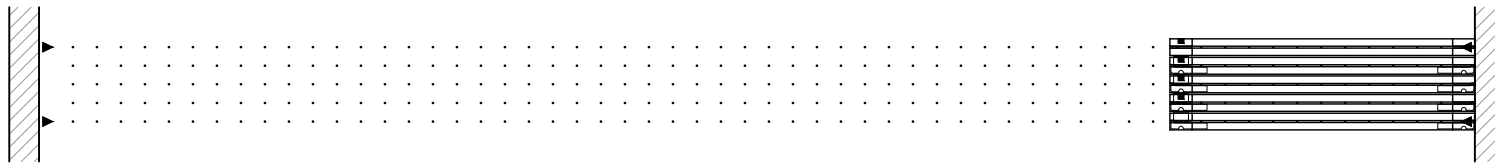
NOTE: each panel weights approximately 75-110 lbs.
Secure tracks accordingly.

Sliding Wall, 5 Panels

(SW5-RD)

OPERATION OVERVIEW

RAYDOOR STANDARD
SYSTEM DRAWINGS
©2020



KEY:

▶ track stop

□ RGS hook

┌ RGS stop

■ flushbolt