

# Sliding Wall w/ Soft-Close, 4 Panels

(SW4-SC)

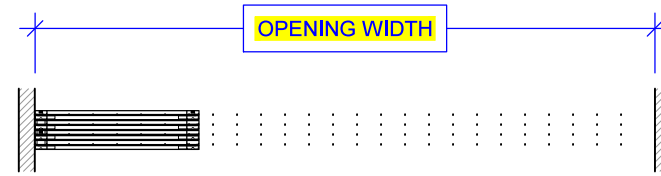
ELEVATION

RAYDOOR STANDARD  
SYSTEM DRAWINGS  
©2020

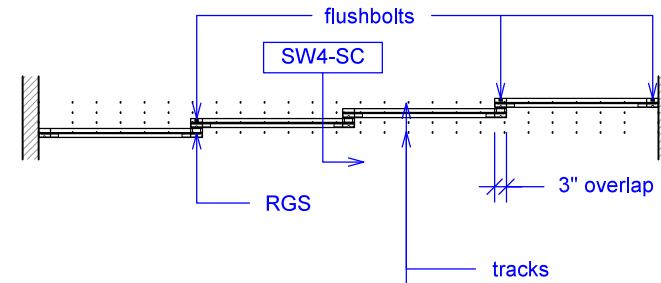


YOUR OPENING HEIGHT = PANEL + 2<sup>3</sup>/<sub>4</sub>"  
YOUR OPENING WIDTH = (4 x PANEL) - 9"

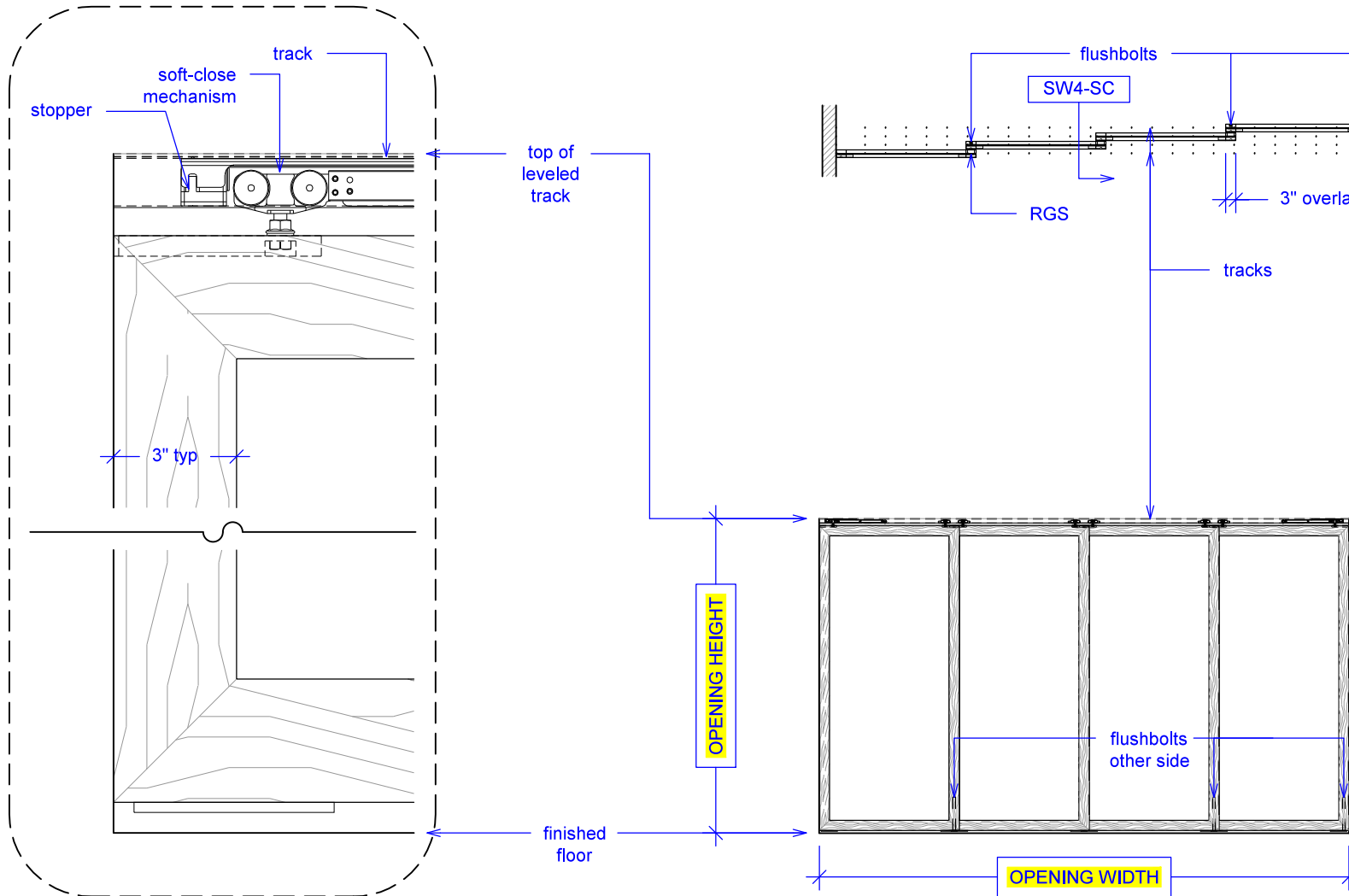
PLAN: open



PLAN: closed



ELEVATION: closed

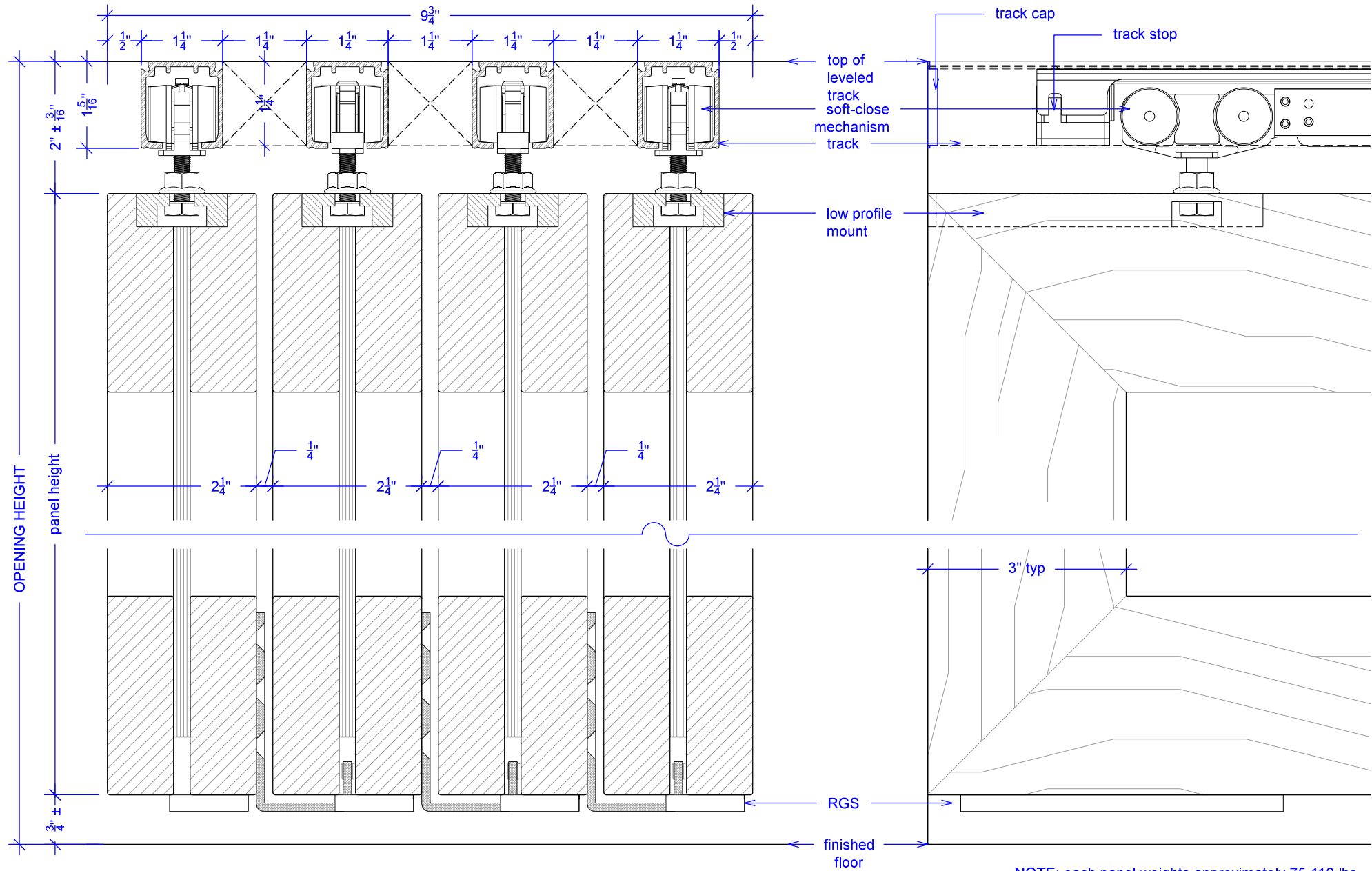


# Sliding Wall w/ Soft-Close, 4 Panels

(SW4-SC)

SECTION

RAYDOOR STANDARD  
SYSTEM DRAWINGS  
©2020



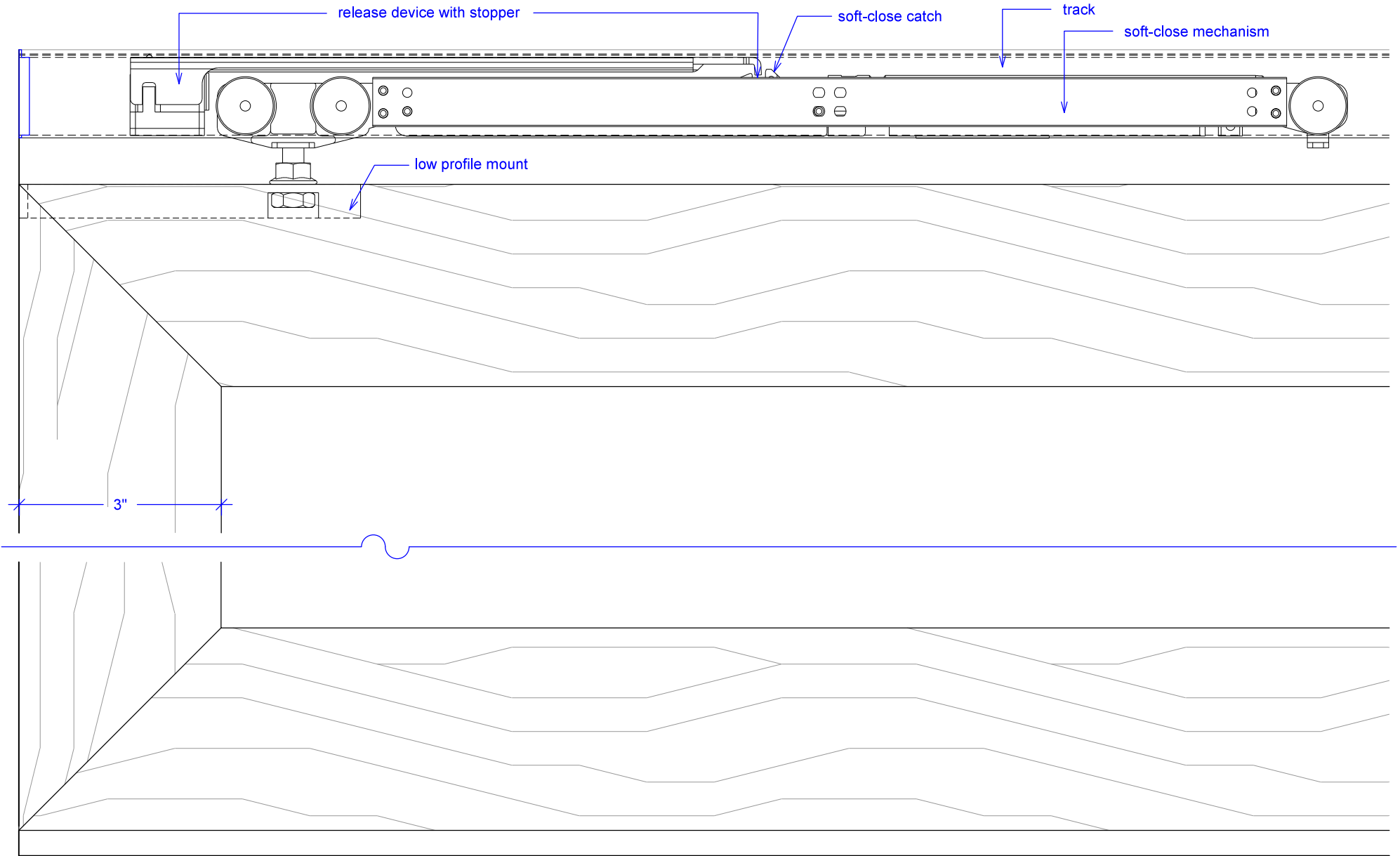
NOTE: each panel weights approximately 75-110 lbs.  
Secure tracks accordingly.

# Sliding Wall w/ Soft-Close, 4 Panels

(SW4-SC)

## SOFT-CLOSE HARDWARE

RAYDOOR STANDARD  
SYSTEM DRAWINGS  
©2020

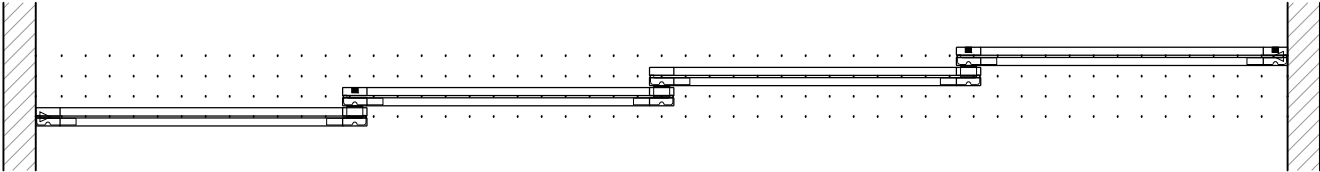
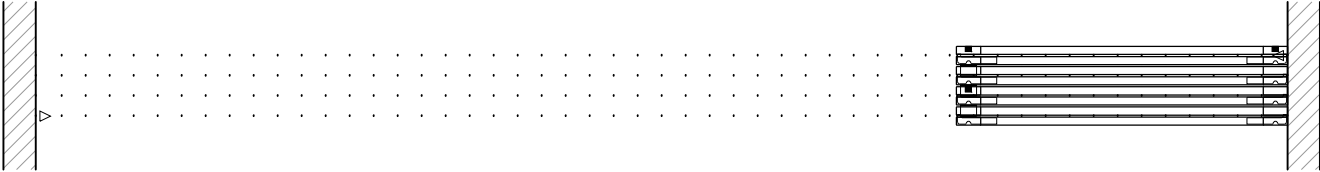


# Sliding Wall w/ Soft-Close, 4 Panels

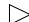

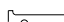

(SW4-SC)

## OPERATION OVERVIEW

RAYDOOR STANDARD  
SYSTEM DRAWINGS  
©2020



**KEY:**

-  stopper / release device
-  RGS hook
-  RGS stop
-  flushbolt