

Sliding Wall w/ Soft-Close, 3 Panels

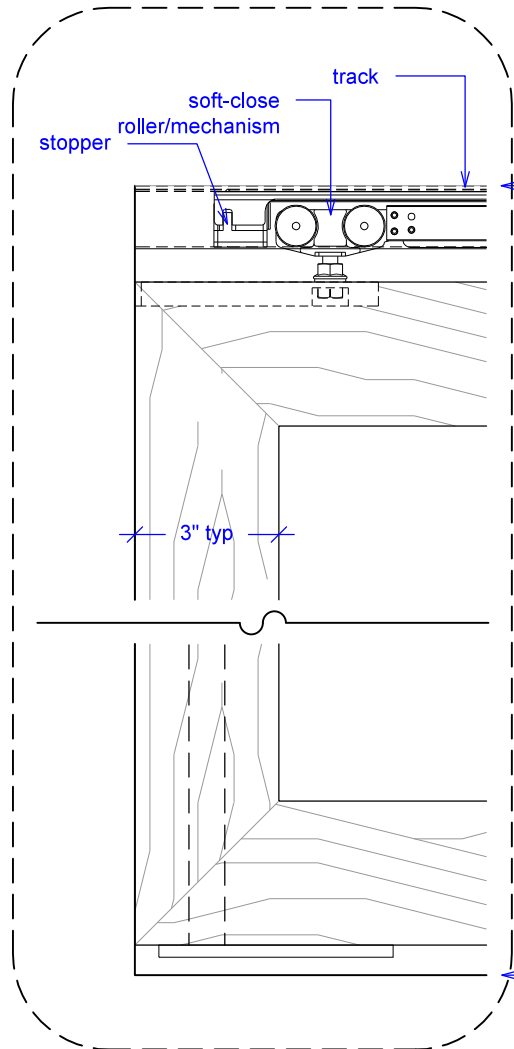
(SW3-SC)

ELEVATION

RAYDOOR STANDARD
SYSTEM DRAWINGS
©2020

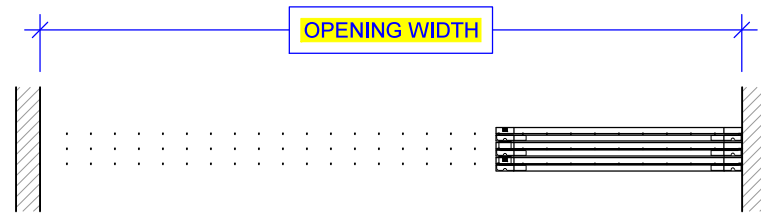


YOUR OPENING HEIGHT = PANEL + 2⁵/₈"
YOUR OPENING WIDTH = (3 x PANEL) - 6"

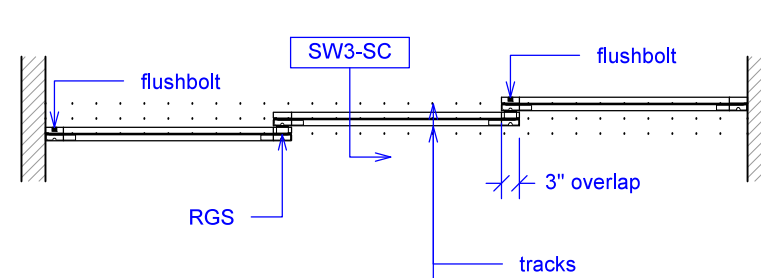


top of leveled track

finished floor

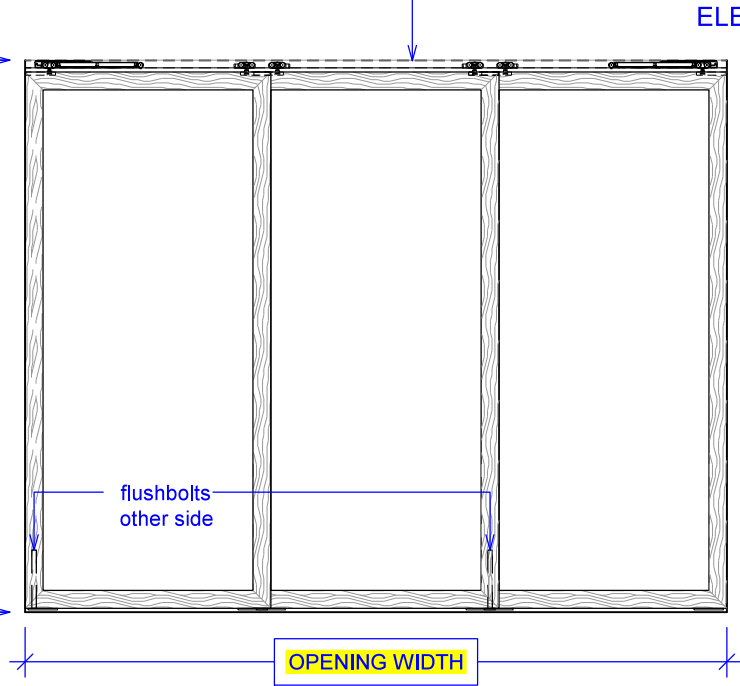


PLAN: open



PLAN: closed

OPENING HEIGHT



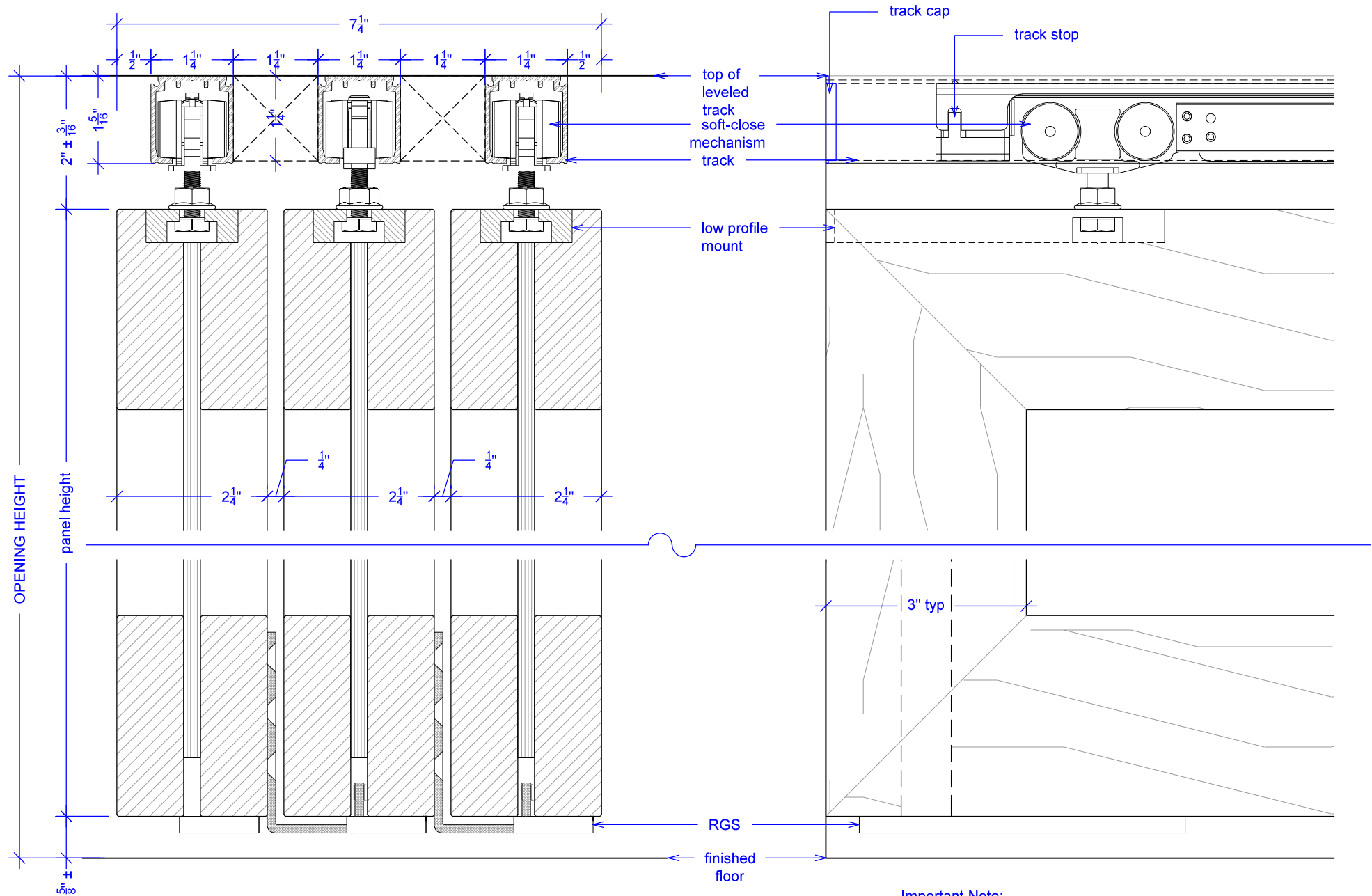
ELEVATION: closed

Sliding Wall w/ Soft-Close, 3 Panels

(SW3-SC)

SECTION

RAYDOOR STANDARD
SYSTEM DRAWINGS
©2020



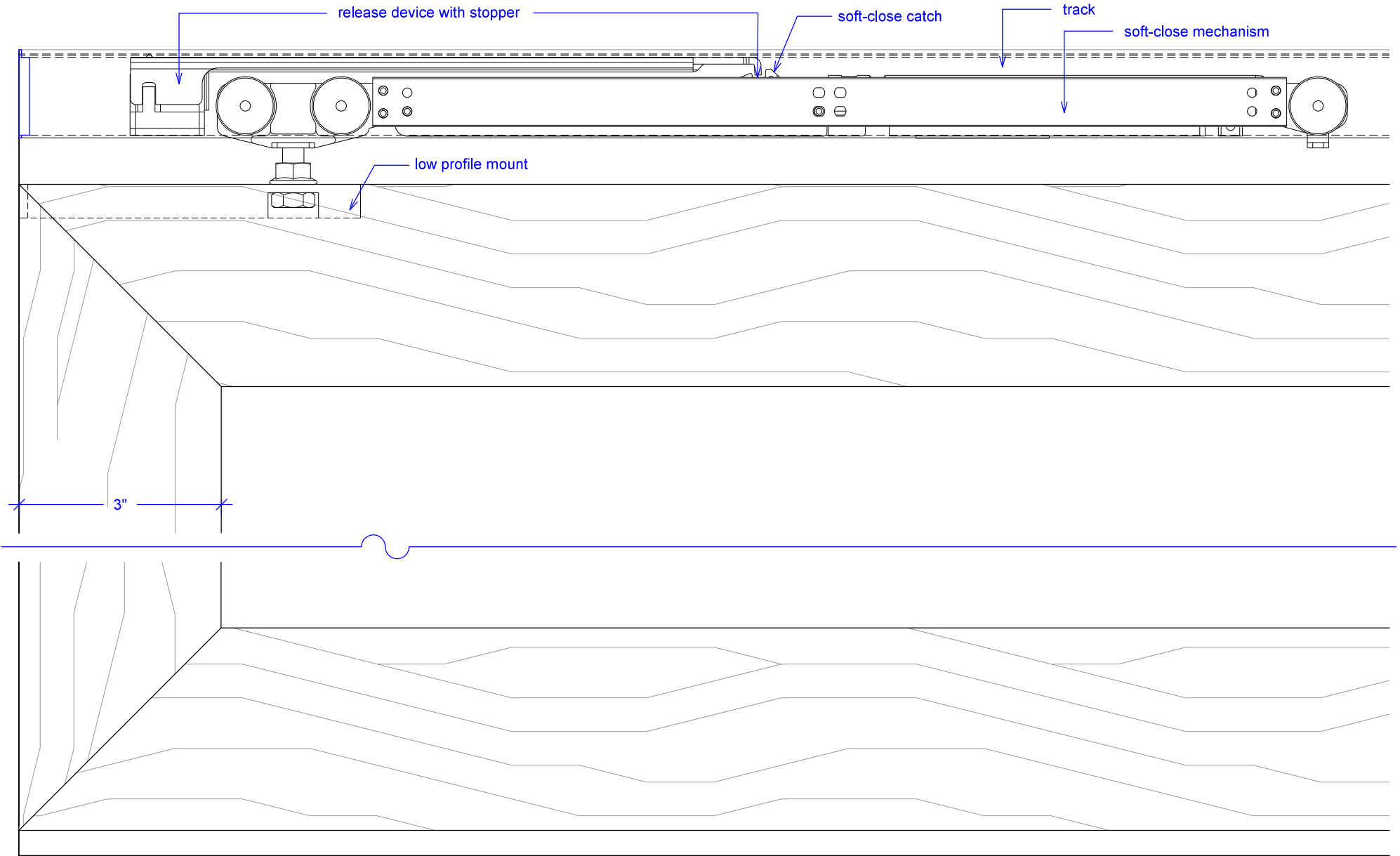
Important Note:
Each panel weights approximately 75-110 lbs. Secure tracks accordingly.

Sliding Wall w/ Soft-Close, 3 Panels

(SW3-SC)

SOFT-CLOSE HARDWARE

RAYDOOR STANDARD
SYSTEM DRAWINGS
©2020

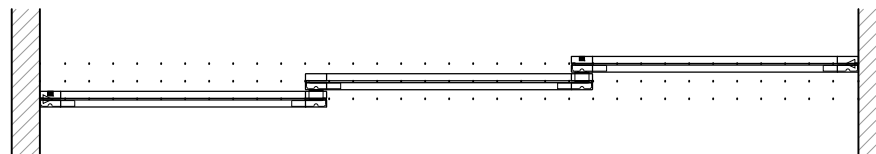
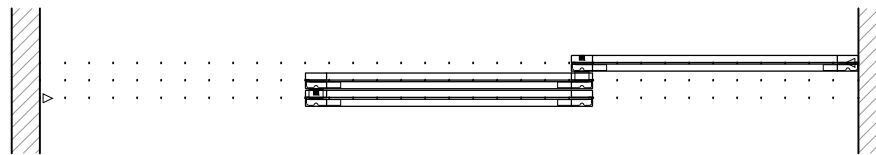
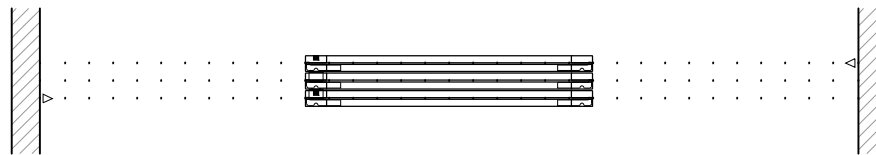


Sliding Wall w/ Soft-Close, 3 Panels

(SW3-SC)

OPERATION OVERVIEW

RAYDOOR STANDARD
SYSTEM DRAWINGS
©2020



KEY:

▷ stopper / release device

□ RGS hook

┌ RGS stop

■ flushbolt