

# Sliding Wall w/ Soft-Close, 3 Panels

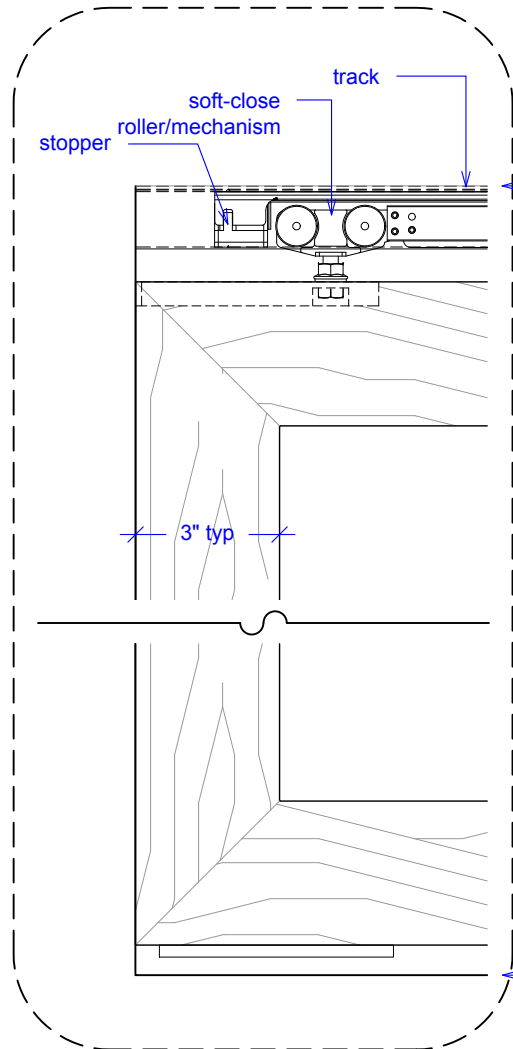
(SW3-SC)

ELEVATION

RAYDOOR STANDARD  
SYSTEM DRAWINGS  
©2020

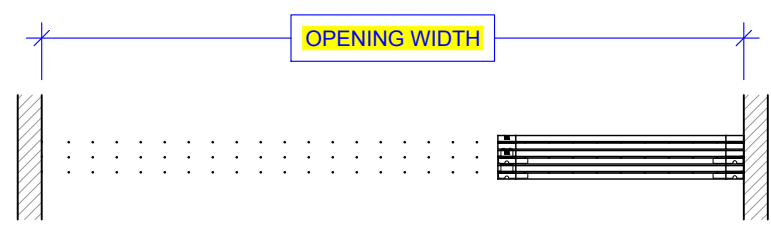


YOUR OPENING HEIGHT = PANEL +  $2\frac{5}{8}$ "  
YOUR OPENING WIDTH = (3 x PANEL) - 6"



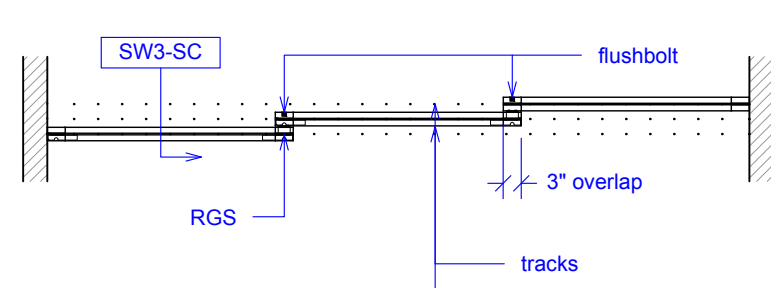
top of leveled track

finished floor



OPENING WIDTH

PLAN: open



SW3-SC

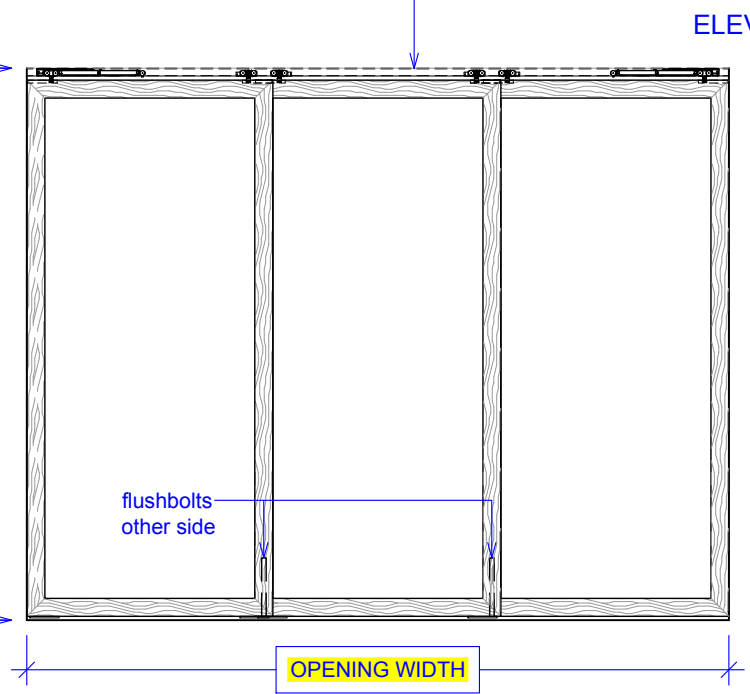
flushbolt

RGS

tracks

3" overlap

PLAN: closed



ELEVATION: closed

flushbolts  
other side

OPENING HEIGHT

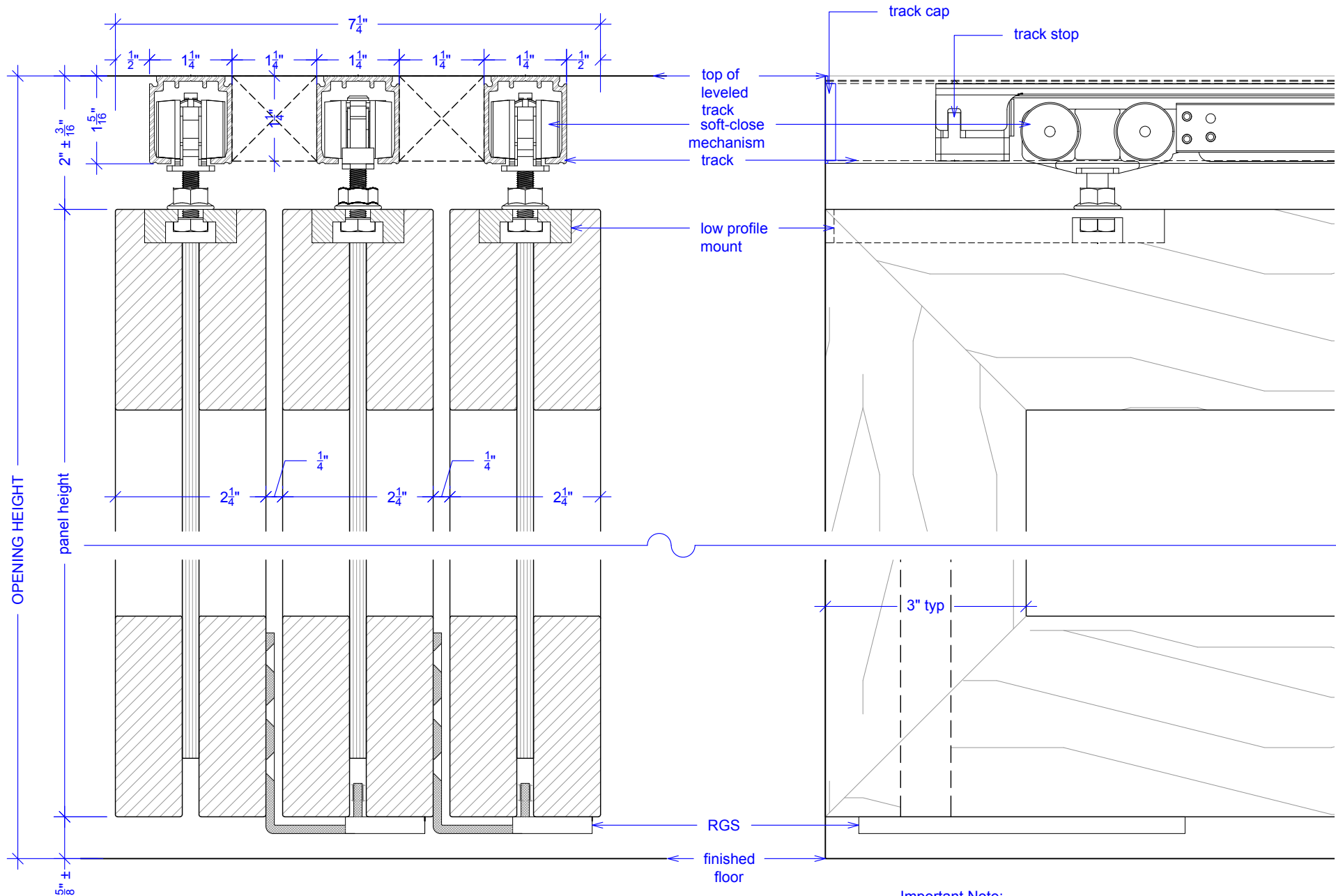
OPENING WIDTH

# Sliding Wall w/ Soft-Close, 3 Panels

(SW3-SC)

## SECTION

RAYDOOR STANDARD  
SYSTEM DRAWINGS  
©2020



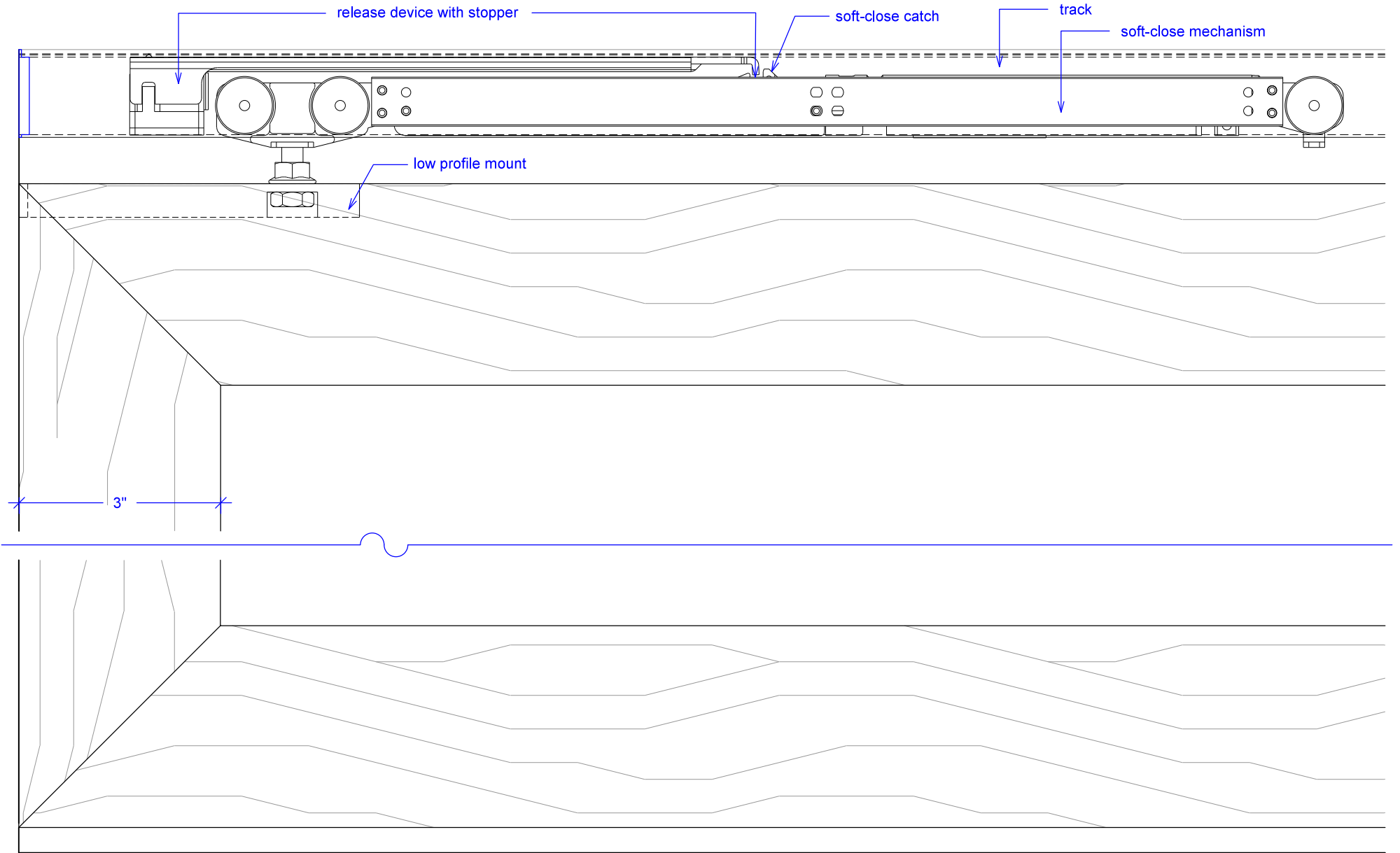
Important Note:  
Each panel weights approximately 75-110 lbs. Secure tracks accordingly.

# Sliding Wall w/ Soft-Close, 3 Panels

(SW3-SC)

## SOFT-CLOSE HARDWARE

RAYDOOR STANDARD  
SYSTEM DRAWINGS  
©2020

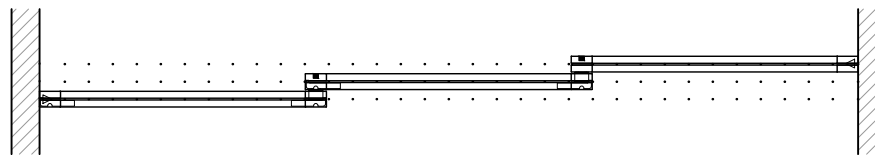
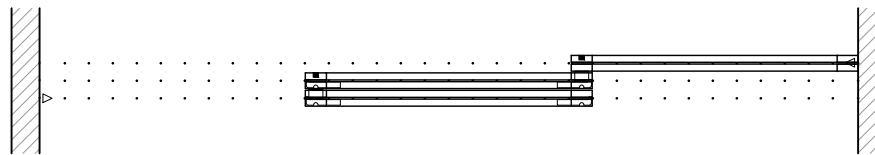
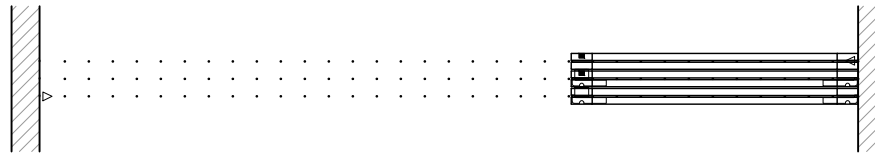
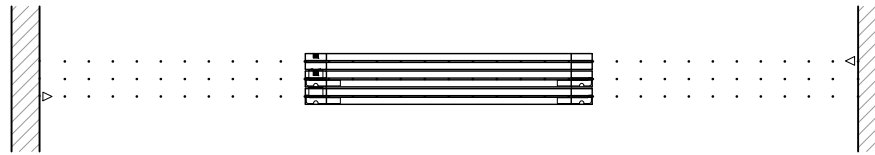


# Sliding Wall w/ Soft-Close, 3 Panels

(SW3-SC)

## OPERATION OVERVIEW

RAYDOOR STANDARD  
SYSTEM DRAWINGS  
©2020



### KEY:

▷ stopper / release device

□ RGS hook

┌ RGS stop

■ flushbolt