

Sliding Wall, 3 Panels

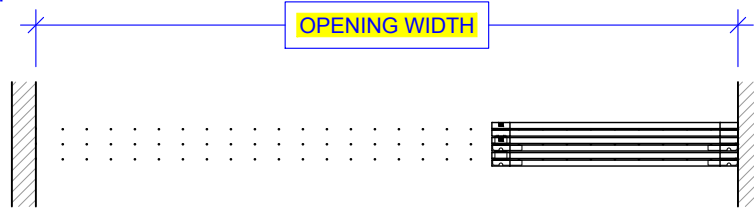
(SW3-RD)

ELEVATION

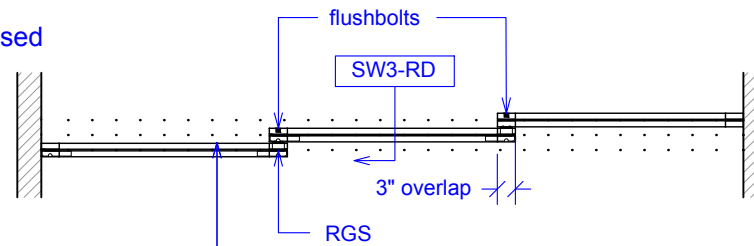
RAYDOOR STANDARD
SYSTEM DRAWINGS
©2020



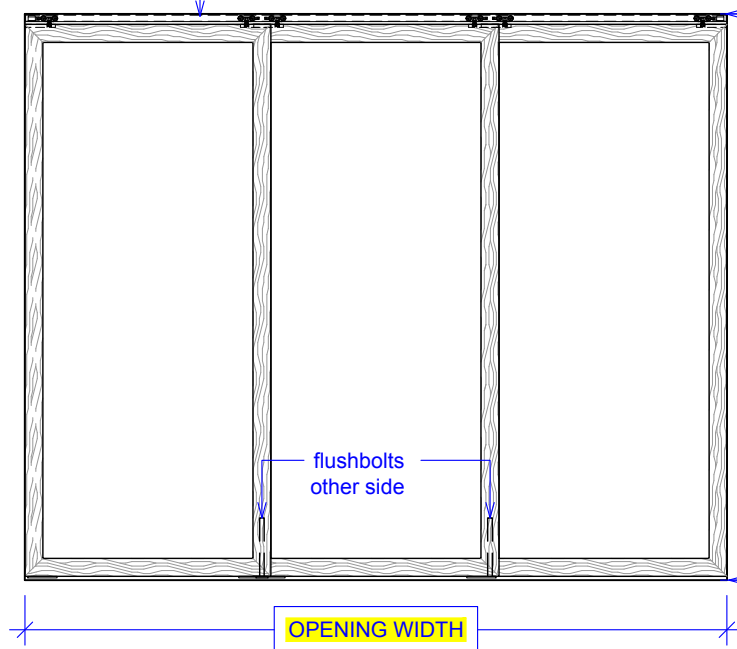
PLAN: open



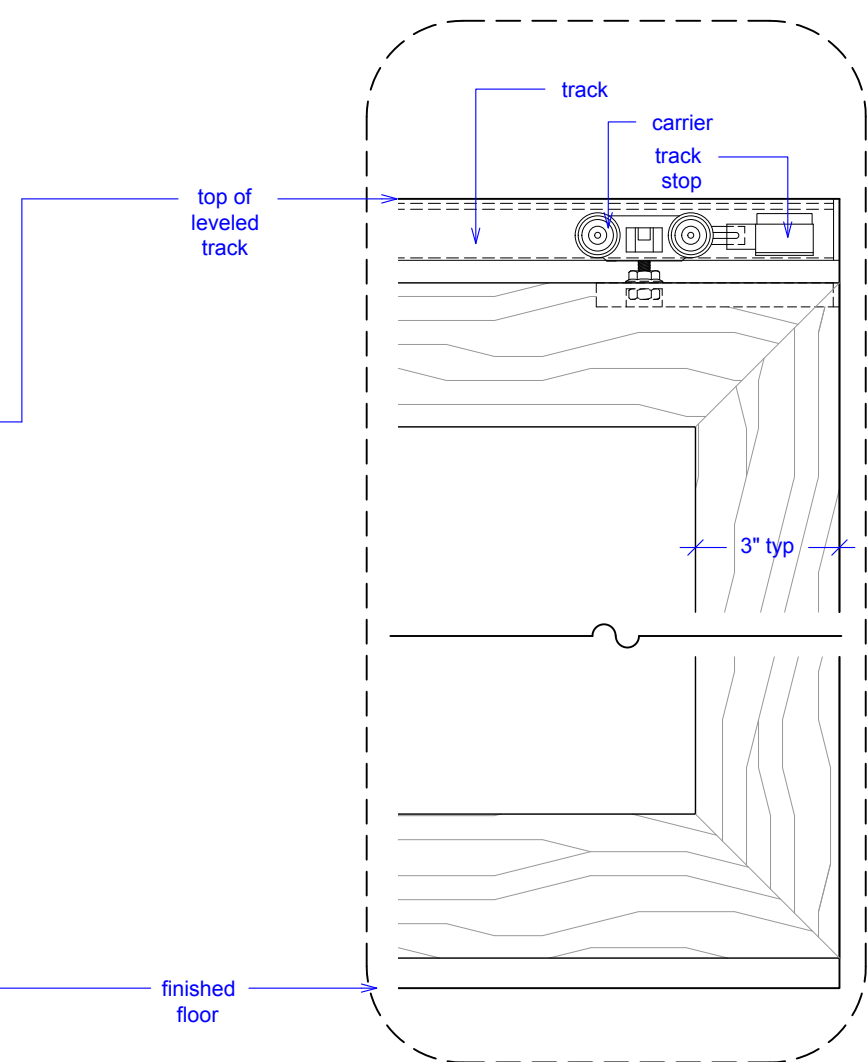
PLAN: closed



ELEVATION: closed



YOUR OPENING HEIGHT = PANEL + $2\frac{3}{8}$ "
YOUR OPENING WIDTH = (3 x PANEL) - 6"

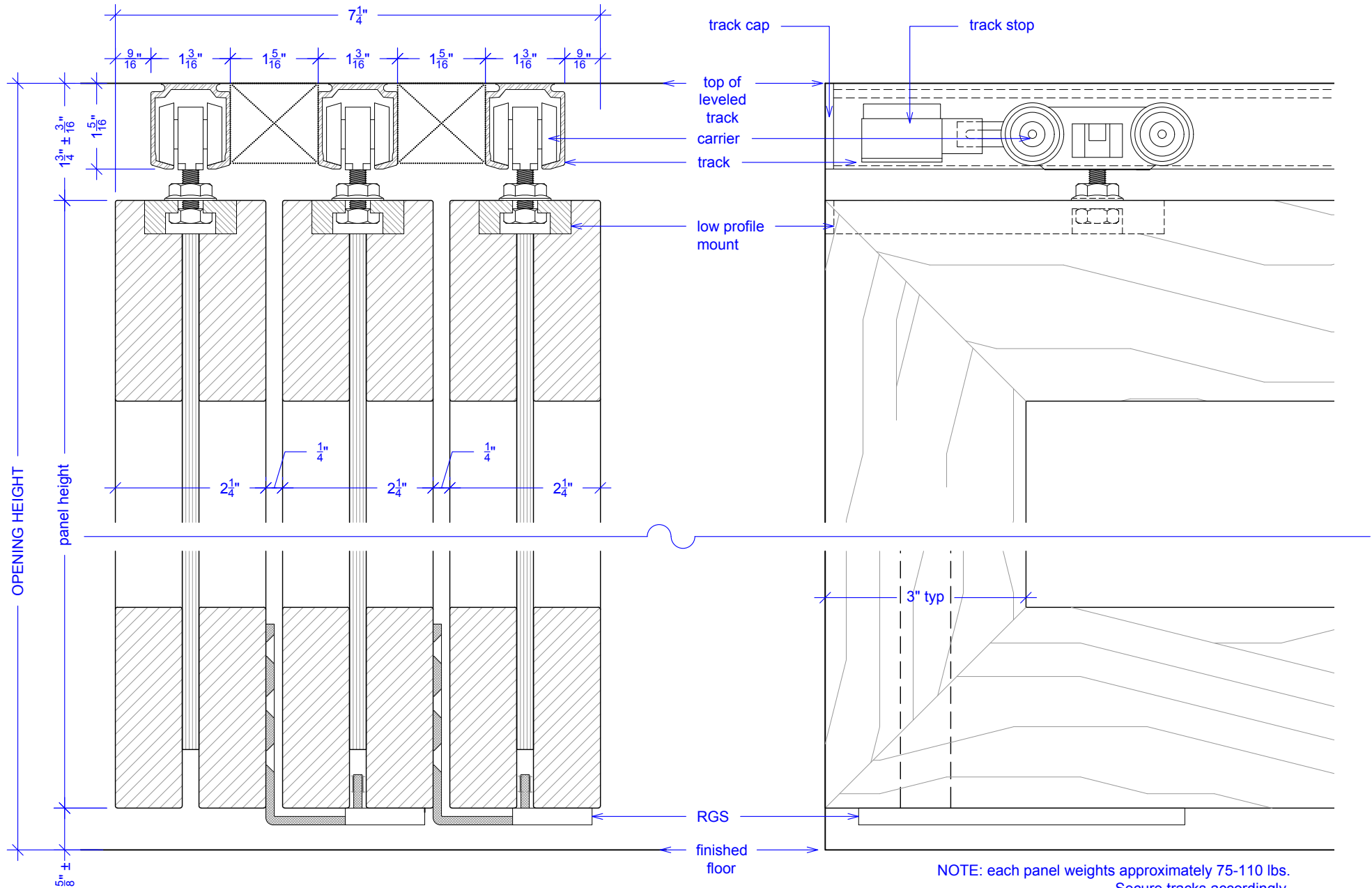


Sliding Wall, 3 Panels

(SW3-RD)

SECTION

RAYDOOR STANDARD
SYSTEM DRAWINGS
©2020

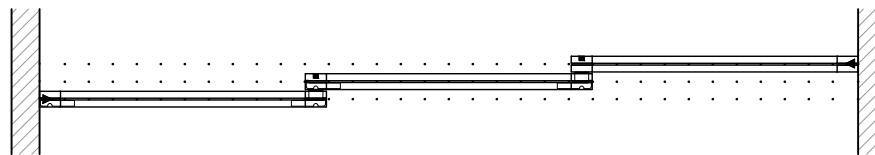
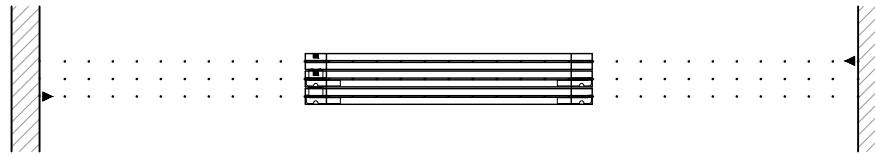


Sliding Wall, 3 Panels

(SW3-RD)

OPERATION OVERVIEW

RAYDOOR STANDARD
SYSTEM DRAWINGS
©2020



KEY:

▶ track stop

□ RGS hook

┌ RGS stop

■ flushbolt