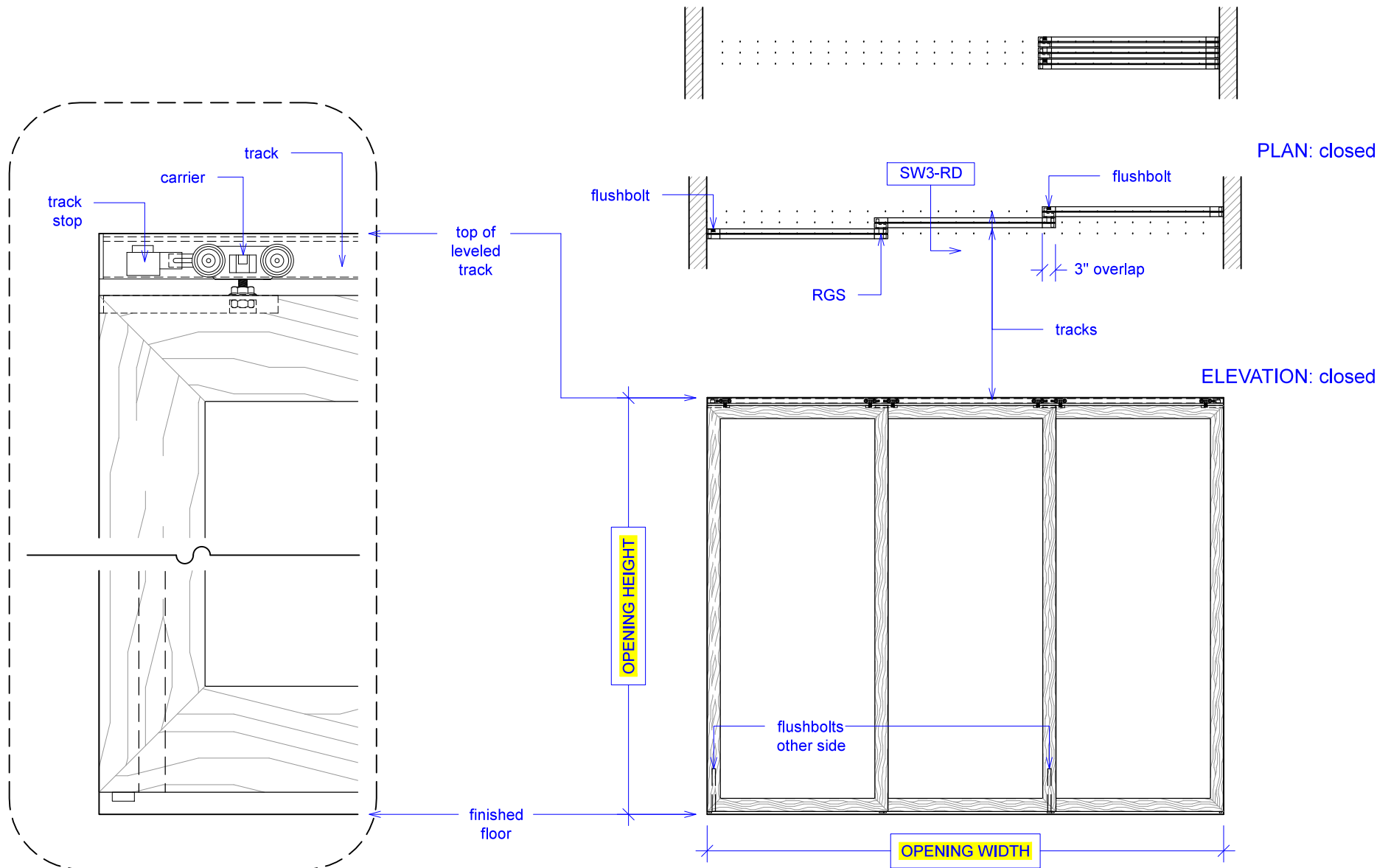




PLAN: open

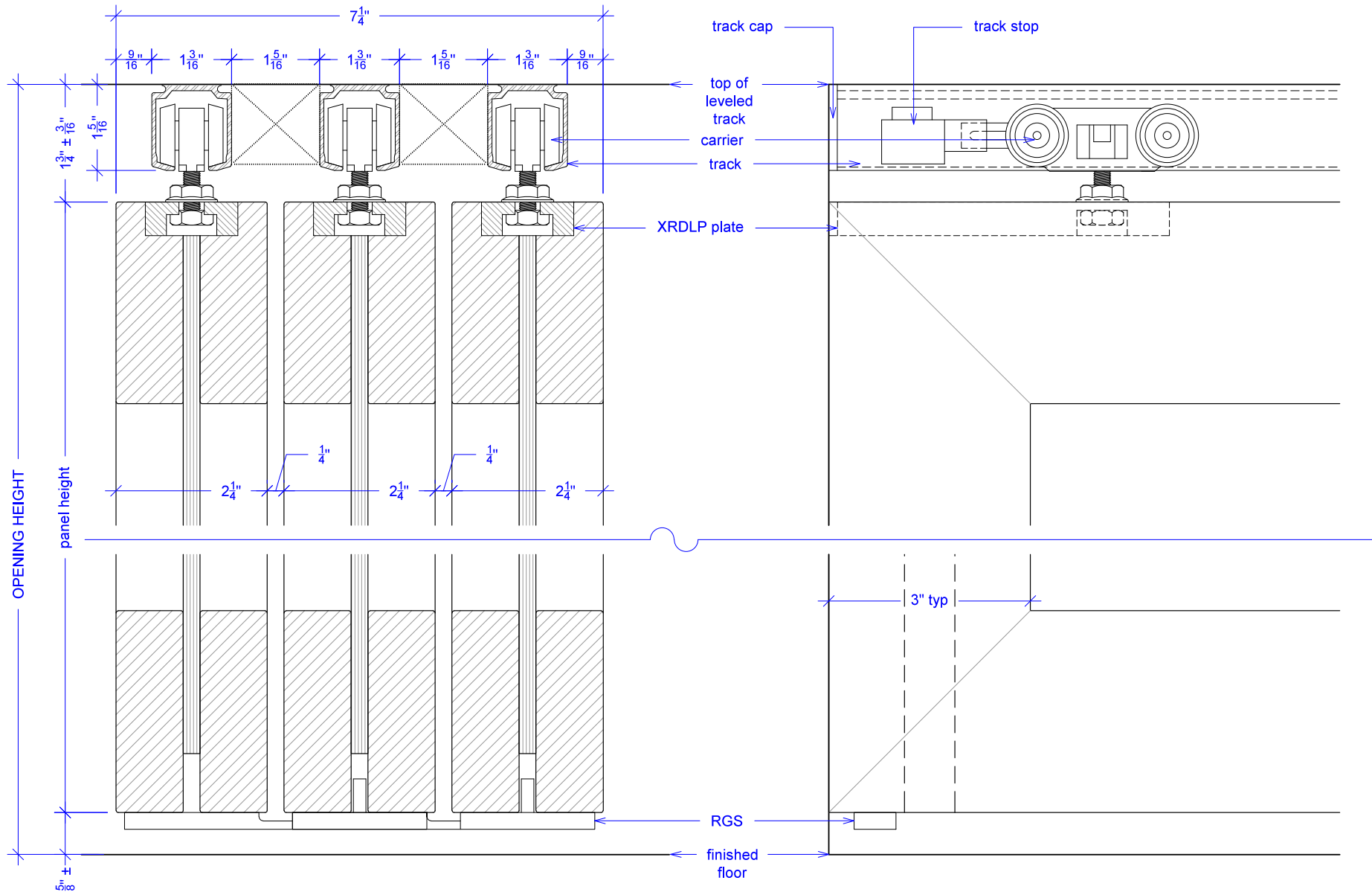
YOUR OPENING HEIGHT = PANEL + 2-3/8"
YOUR OPENING WIDTH = (PANEL x 3) - 6"



SW3 - 225

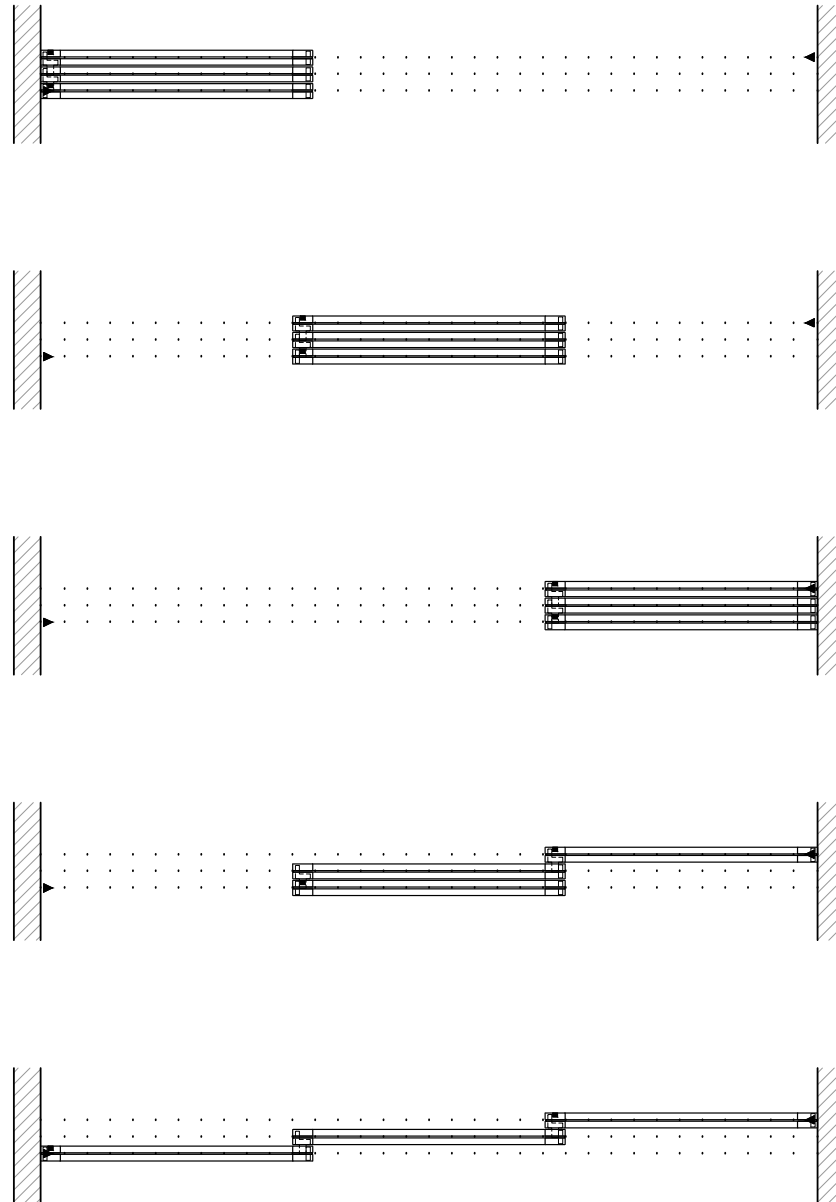


Important Notes:
Each panel weighs approximately 85-100lbs. Secure tracks accordingly.
This page represents GENERIC system detail. Please refer to Elevation page
for your custom system configuration.









Important Notes:
Each panel weights approximately 85-100lbs. Secure tracks accordingly.
This page represents GENERIC system detail. Please refer to Elevation page
for your custom system configuration.



KEY:

-  track stop
-  left RGS hook
-  RGS stop
-  flushbolt