

Sliding Pocket Wall w/ Soft-Close, 4 Panels, Symmetrical

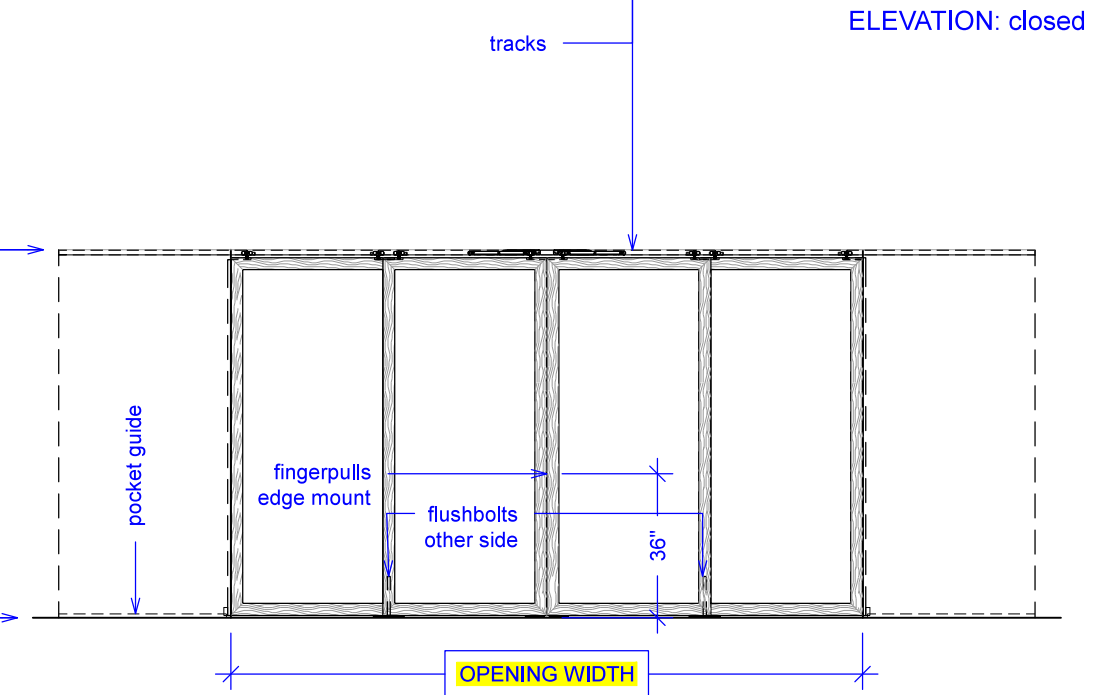
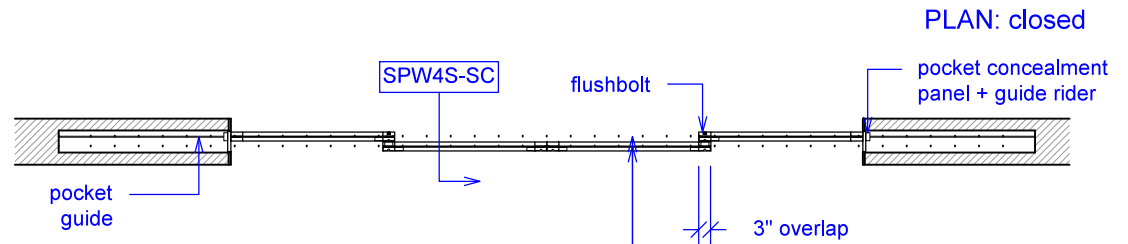
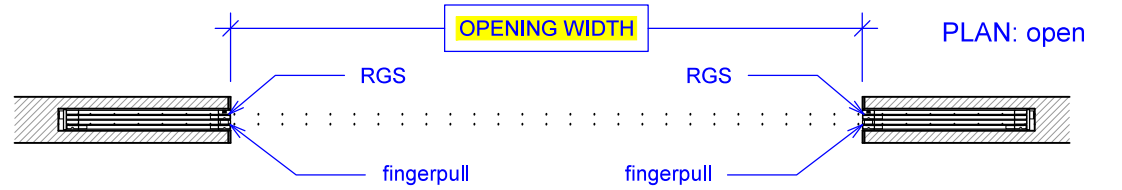
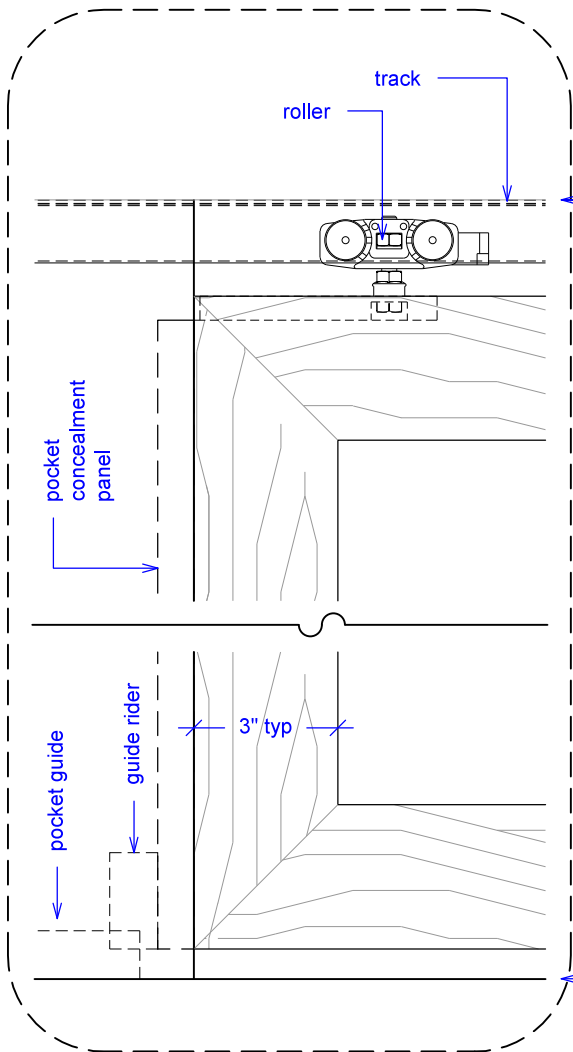
(SPW4S-SC)

ELEVATION

RAYDOOR STANDARD
SYSTEM DRAWINGS
©2020



YOUR OPENING HEIGHT = PANEL + 2⁵/₈"
YOUR OPENING WIDTH = (4 x PANEL) - 6"



OPENING HEIGHT

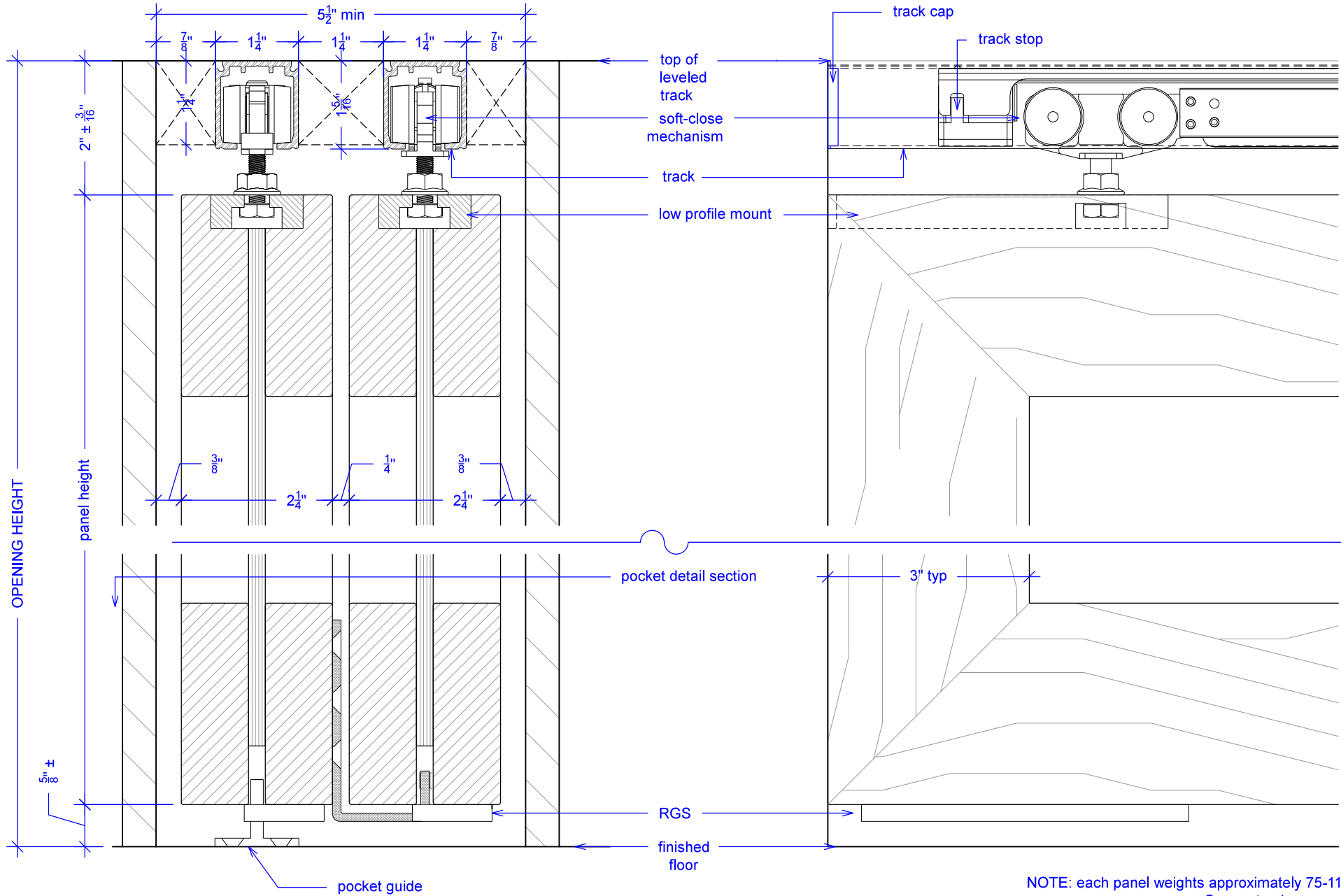
OPENING WIDTH

Sliding Pocket Wall w/ Soft-Close, 4 Panels, Symmetrical

(SPW4S-SC)

SECTION

RAYDOOR STANDARD
SYSTEM DRAWINGS
©2020



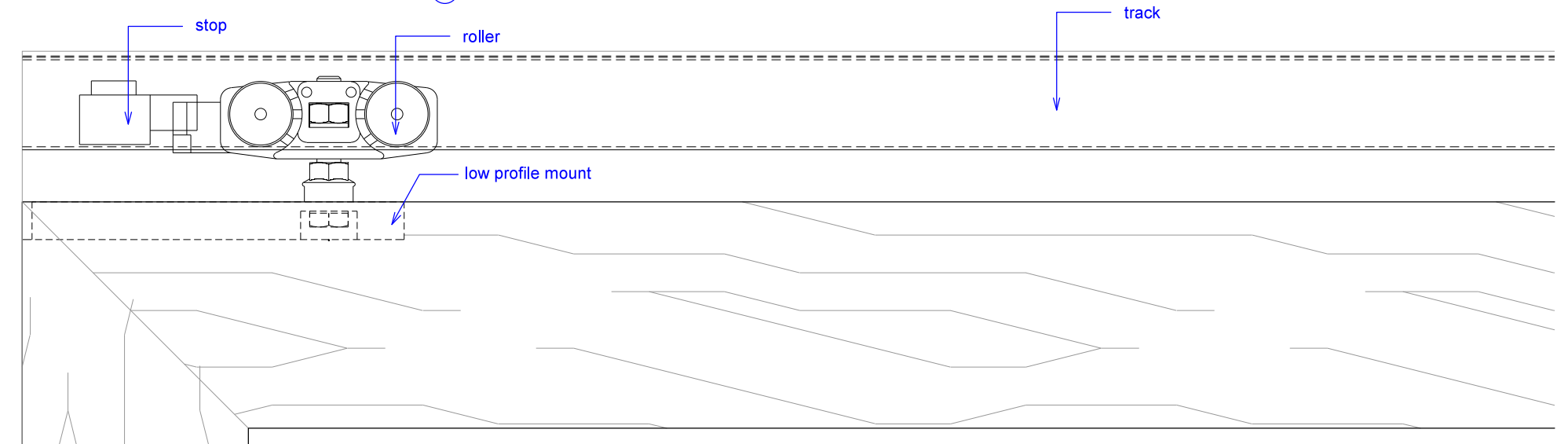
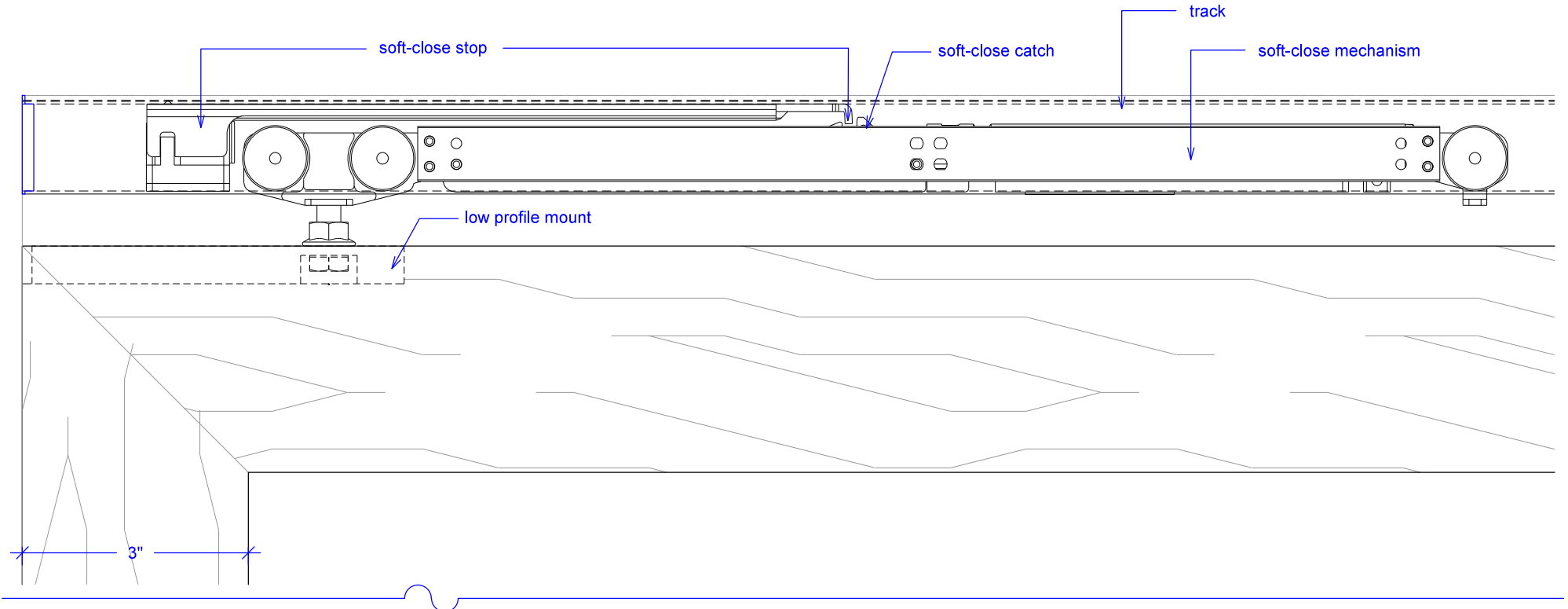
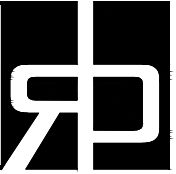
NOTE: each panel weights approximately 75-110 lbs.
Secure tracks accordingly.

Sliding Pocket Wall w/ Soft-Close, 4 Panels, Symmetrical

(SPW4S-SC)

SOFT-CLOSE HARDWARE

RAYDOOR STANDARD
SYSTEM DRAWINGS
©2020



Sliding Pocket Wall w/ Soft-Close, 4 Panels, Symmetrical

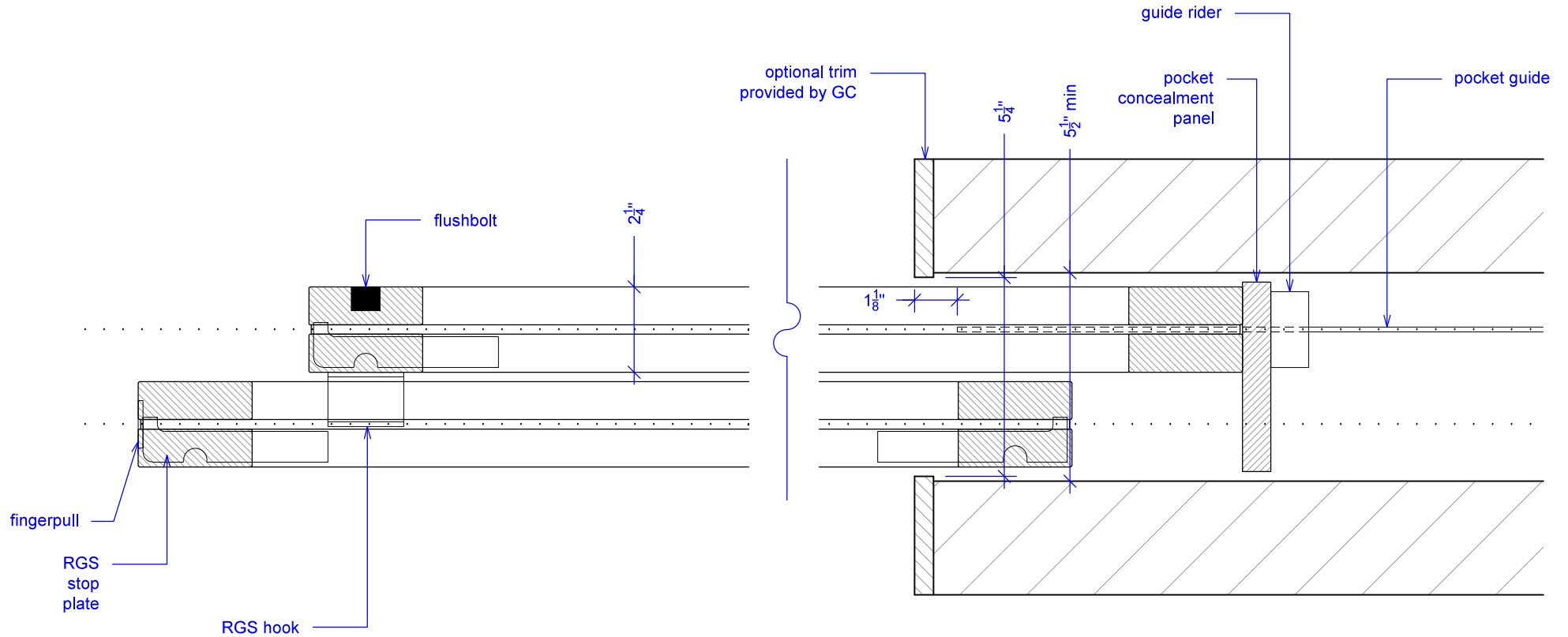
(SPW4S-SC)

POCKET DETAIL

RAYDOOR STANDARD
SYSTEM DRAWINGS
©2020



NOTE: pocket depth should be 2"
deeper than width of doors



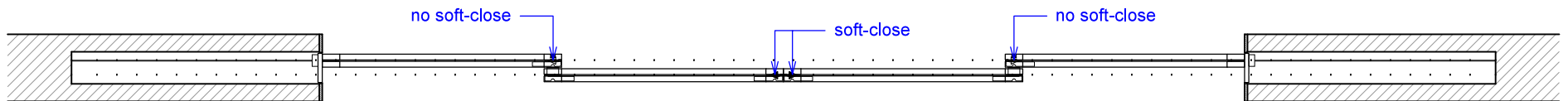
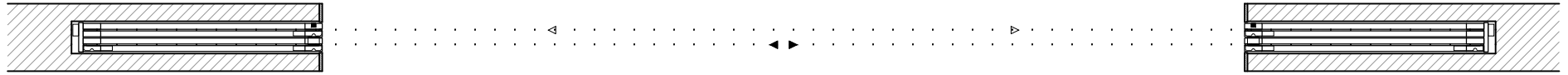
Guide rider is a block with a slit for the pocket guide; it allows for full extension, attach to bottom of concealment panel.

Sliding Pocket Wall w/ Soft-Close, 4 Panels, Symmetrical






(SPW4S-SC)

OPERATION OVERVIEW

RAYDOOR STANDARD
SYSTEM DRAWINGS
©2020



KEY:

| | | | | |
|--|--|--|--|--|
|  RGS hook |  RGS stop |  pocket guide |  track stop |  stopper / release device |
|--|--|--|--|--|