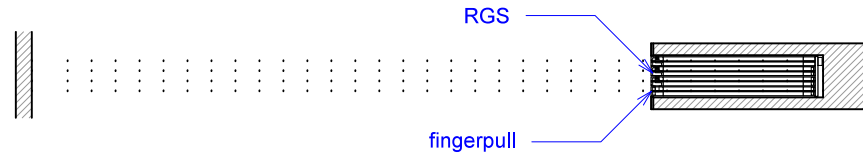
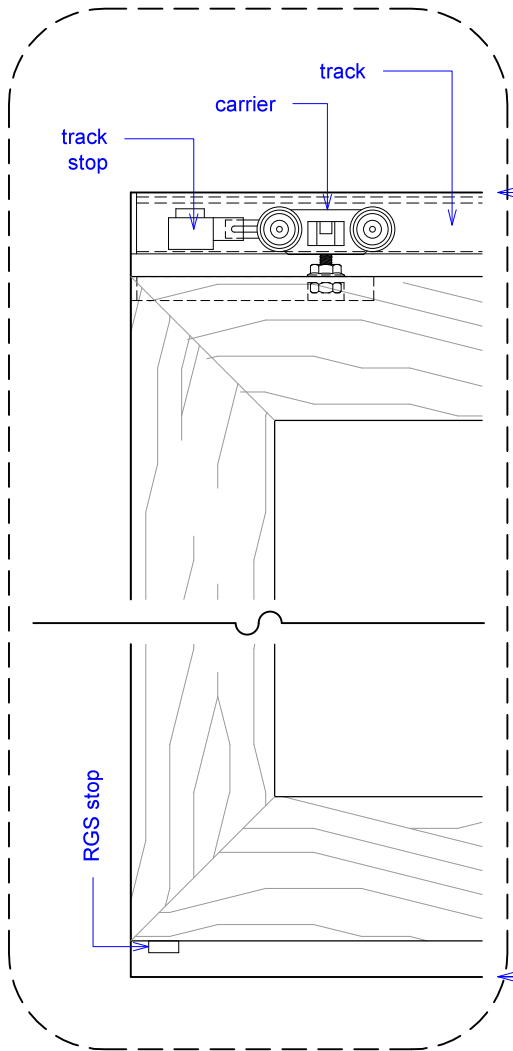


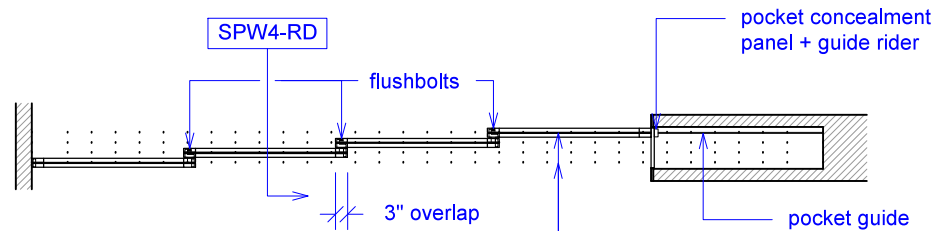


YOUR OPENING HEIGHT = PANEL + 2-1/2"
YOUR OPENING WIDTH = (PANEL x 4) - 9

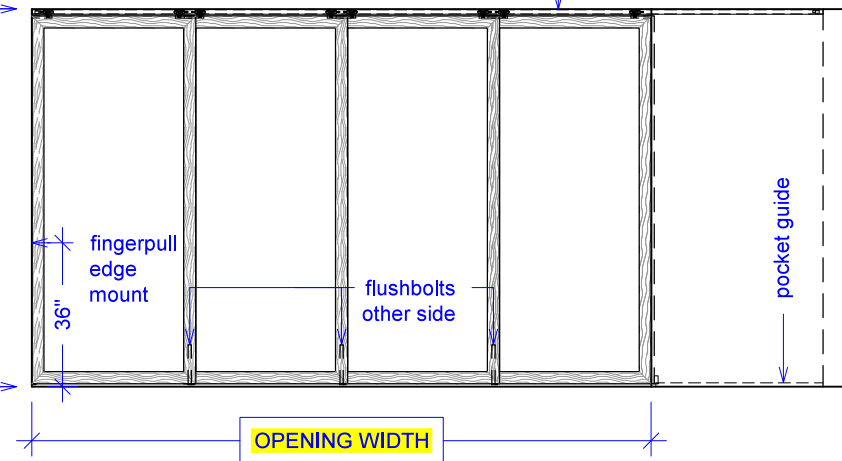
PLAN: open



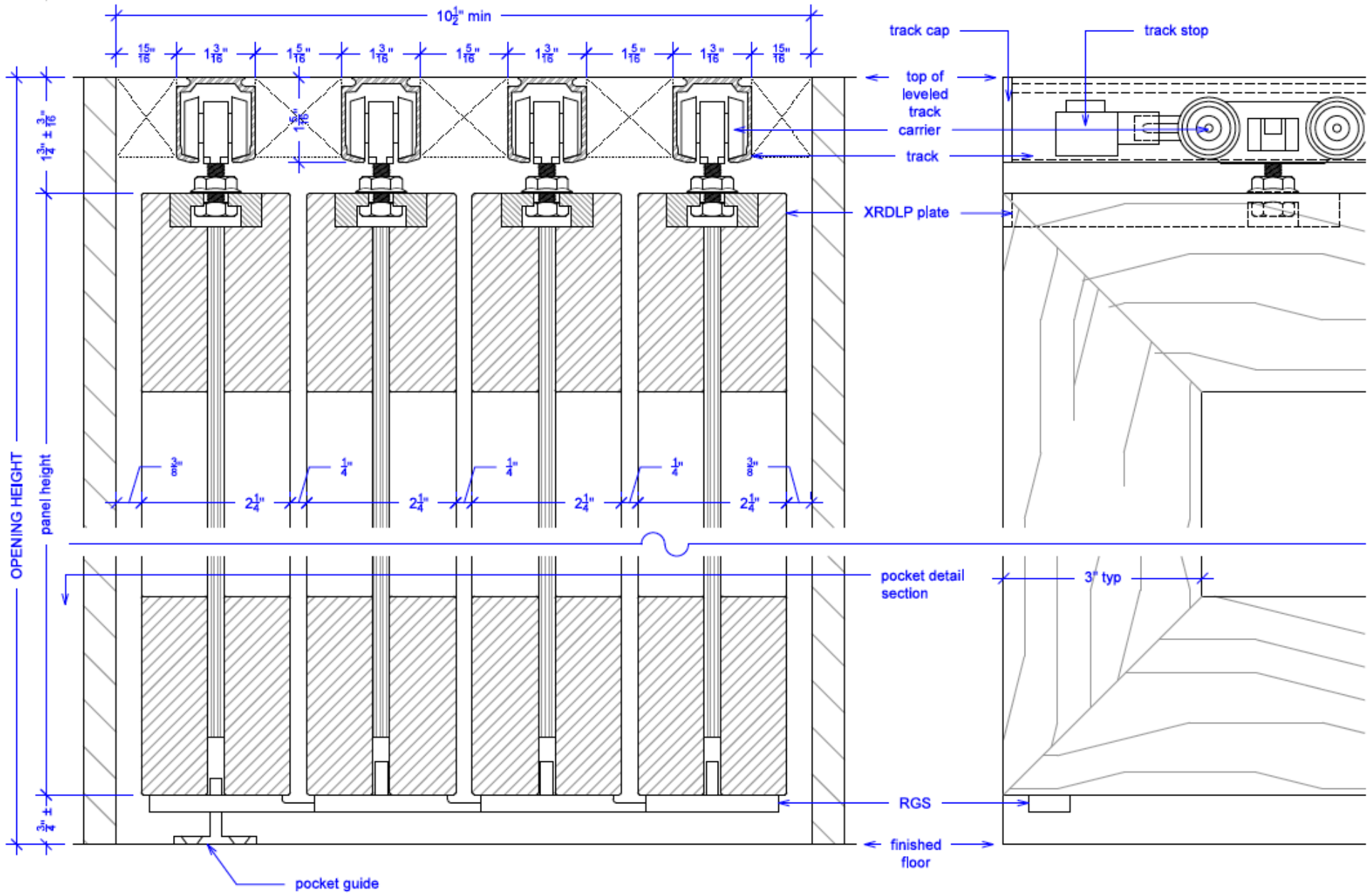
PLAN: closed



ELEVATION: closed



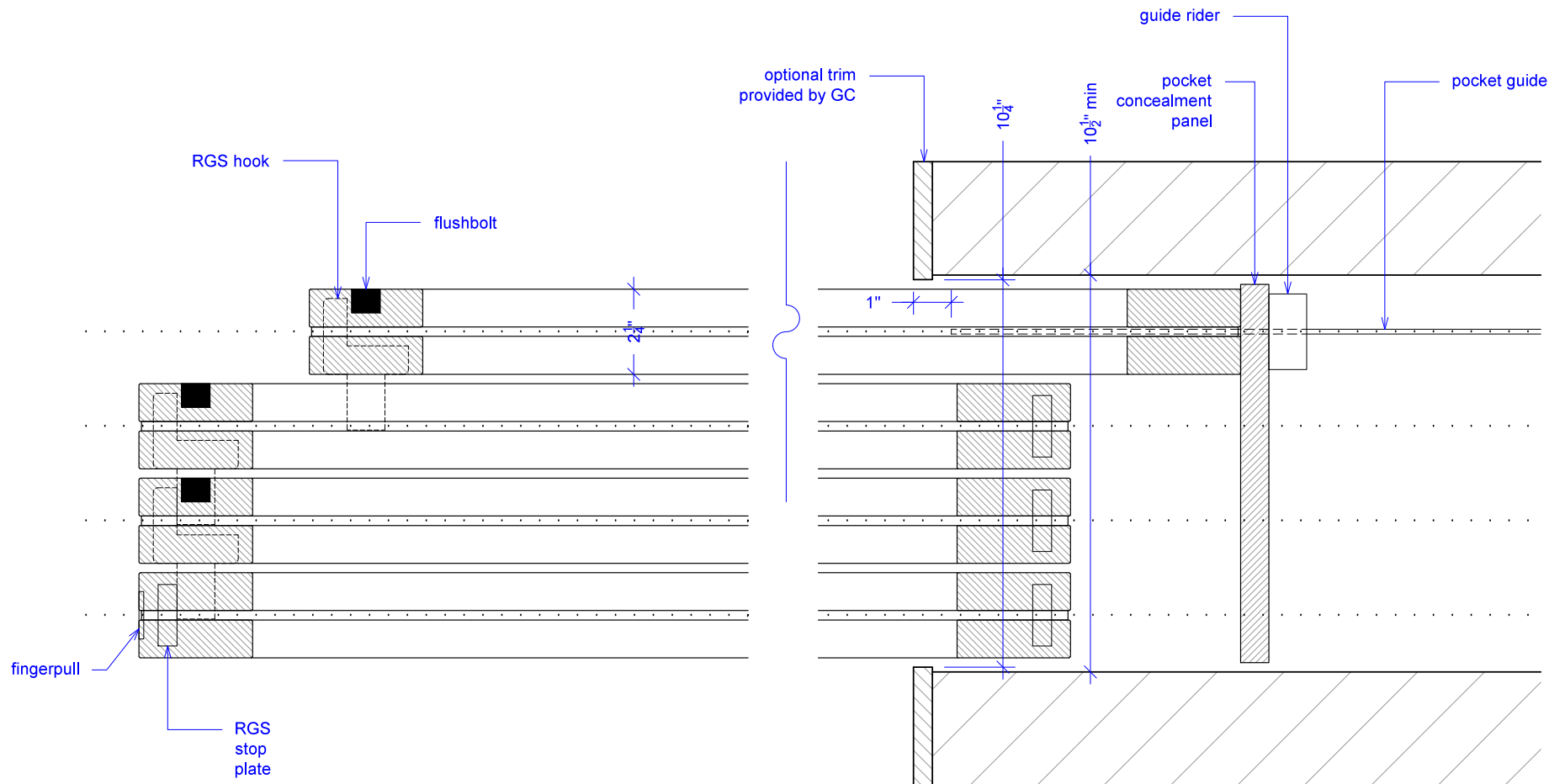
SPW4 - 225





NOTE: each panel weighs approximately 75-110 lbs.
Secure tracks accordingly.

NOTE: pocket depth should be 2"
deeper than width of doors



Guide rider is a block with a slit for the pocket guide; it allows for full extension, attach to bottom of concealment panel.

SPW4 Operation Overview



NOTE: each panel weighs approximately 75-110 lbs.
Secure tracks accordingly.

