

Sliding Pocket Wall w/ Soft-Close, 3 Panels

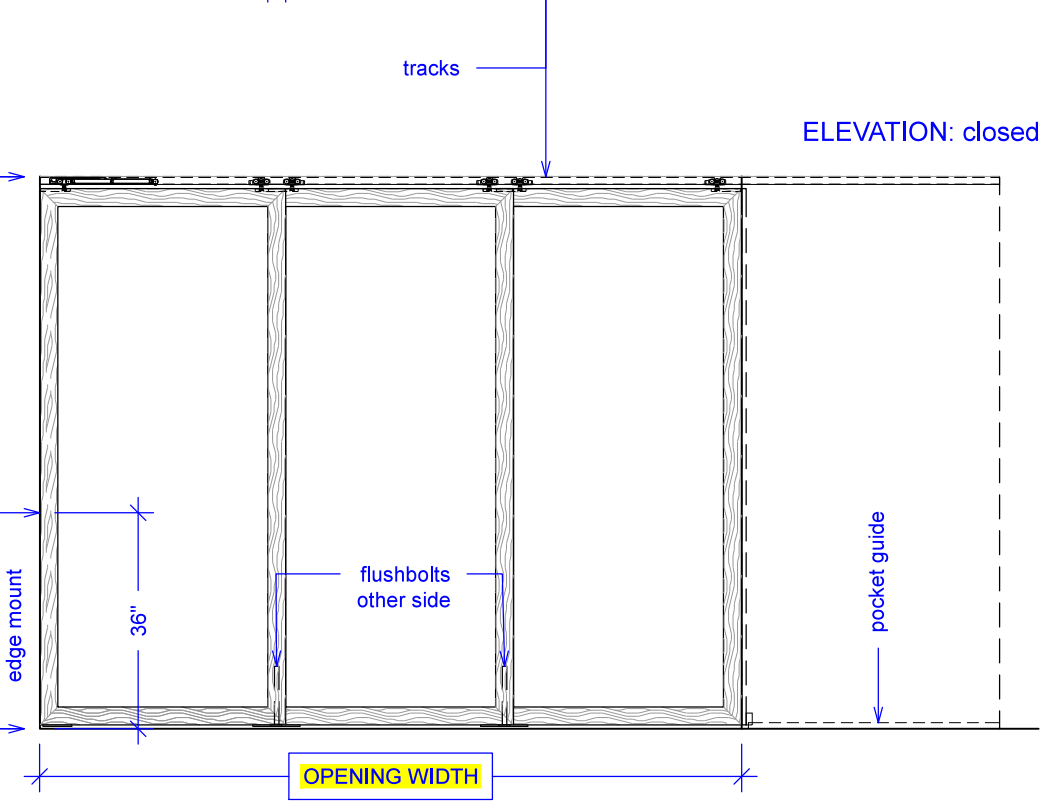
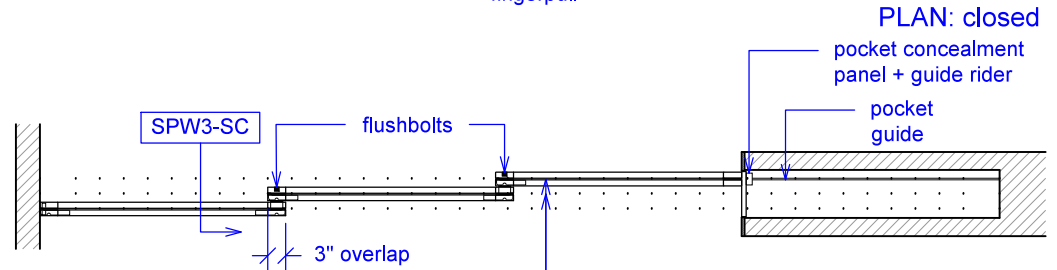
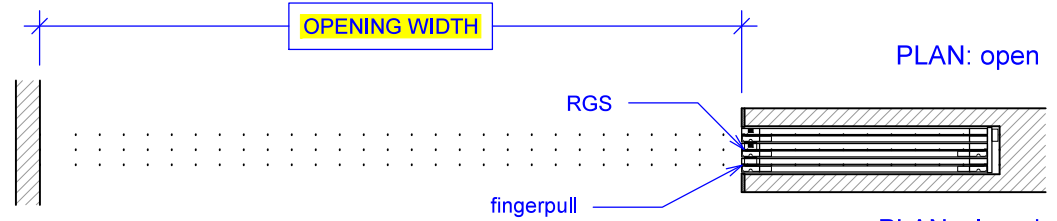
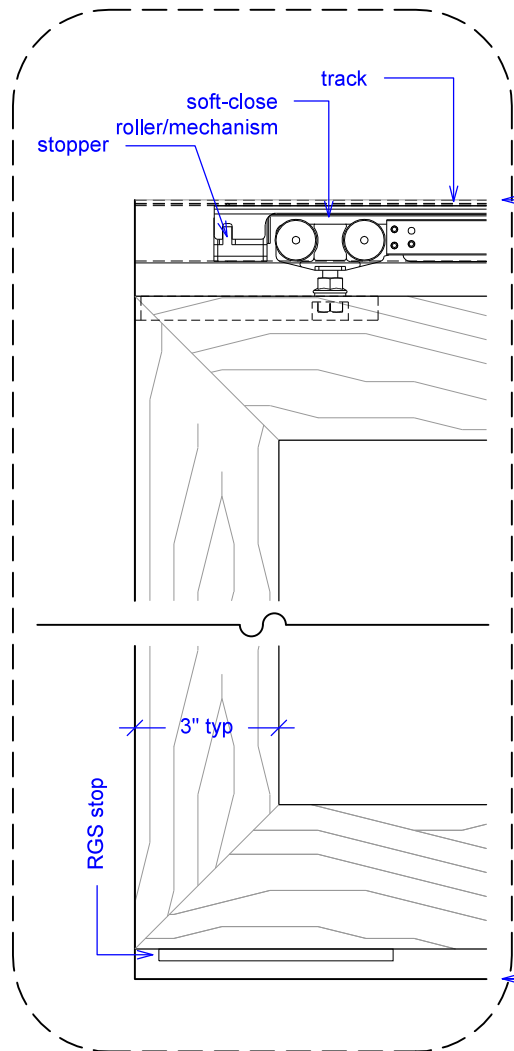
(SPW3-SC)

ELEVATION

RAYDOOR STANDARD
SYSTEM DRAWINGS
©2020



YOUR OPENING HEIGHT = PANEL + 2⁵/₈"
YOUR OPENING WIDTH = (3 x PANEL) - 6"

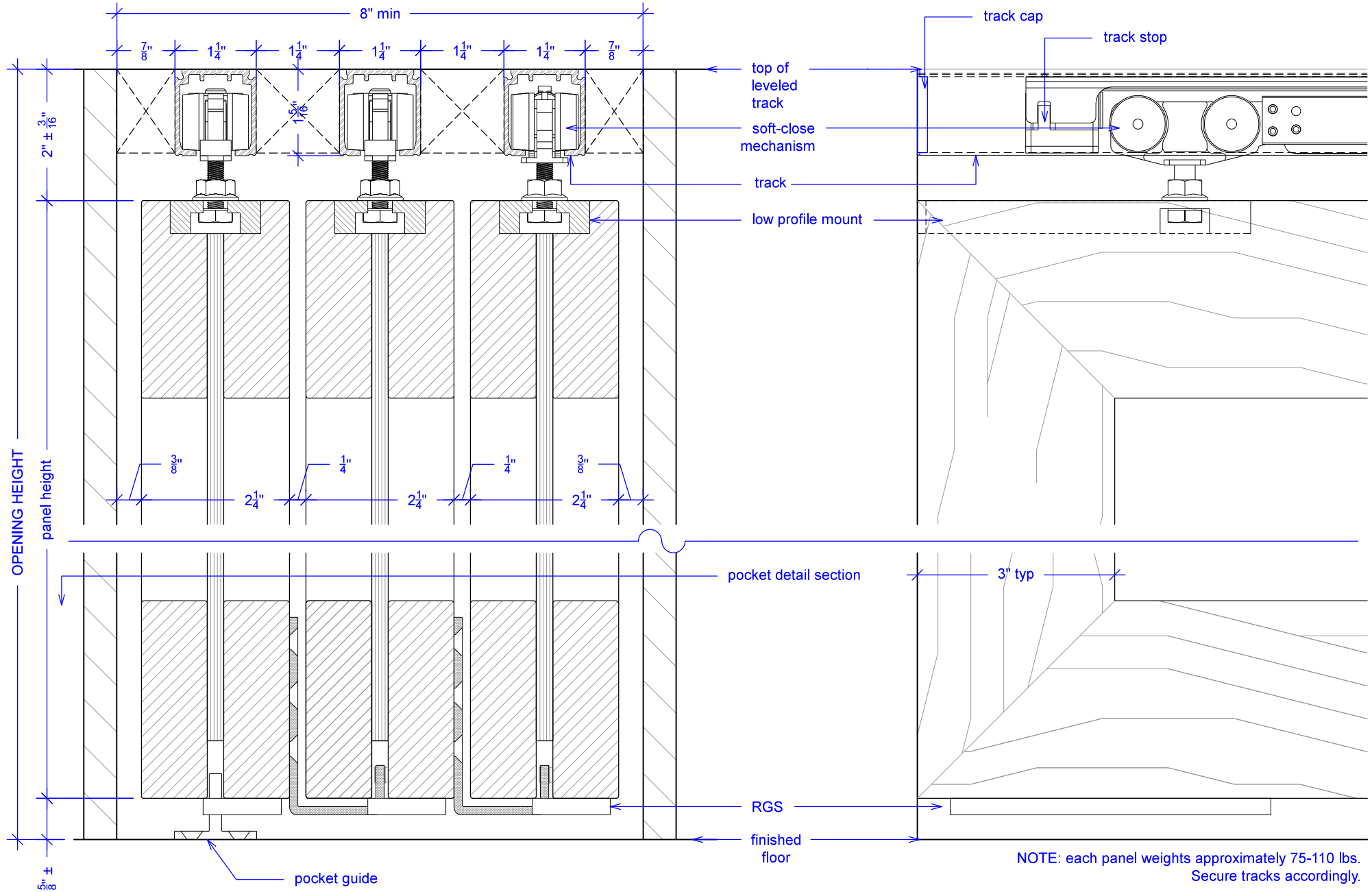


Sliding Pocket Wall w/ Soft-Close, 3 Panels

(SPW3-SC)

SECTION

RAYDOOR STANDARD
SYSTEM DRAWINGS
©2020

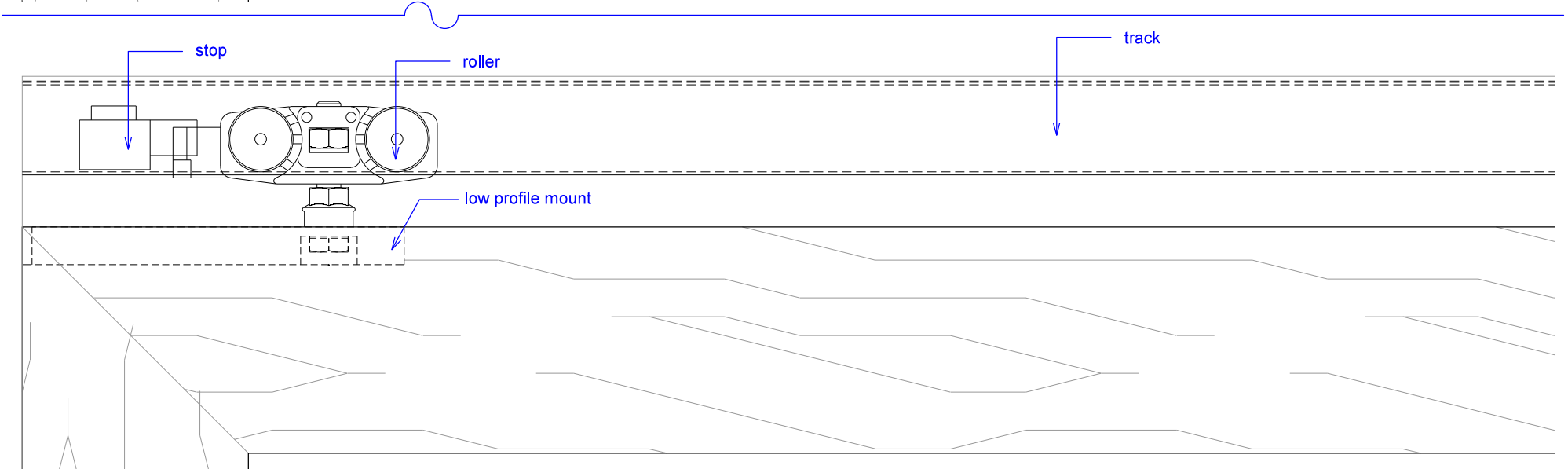
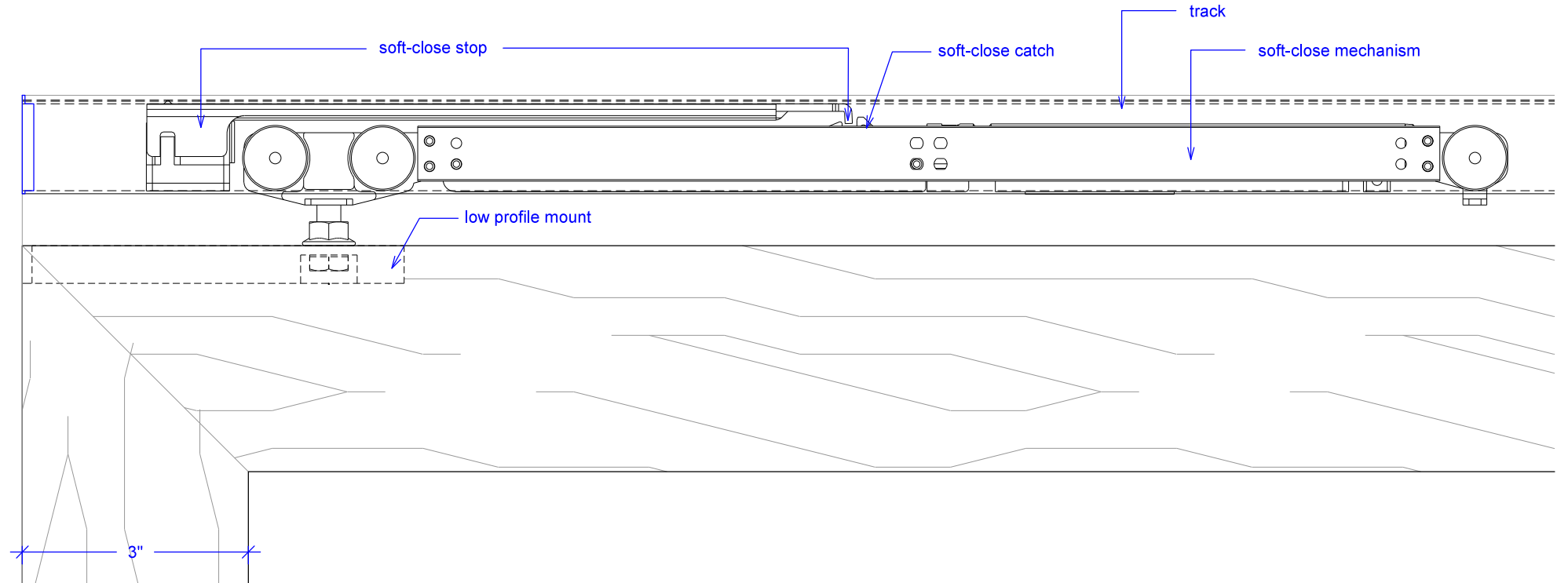


Sliding Pocket Wall w/ Soft-Close, 3 Panels

(SPW3-SC)

SOFT-CLOSE HARDWARE

RAYDOOR STANDARD
SYSTEM DRAWINGS
©2020



Sliding Pocket Wall w/ Soft-Close, 3 Panels

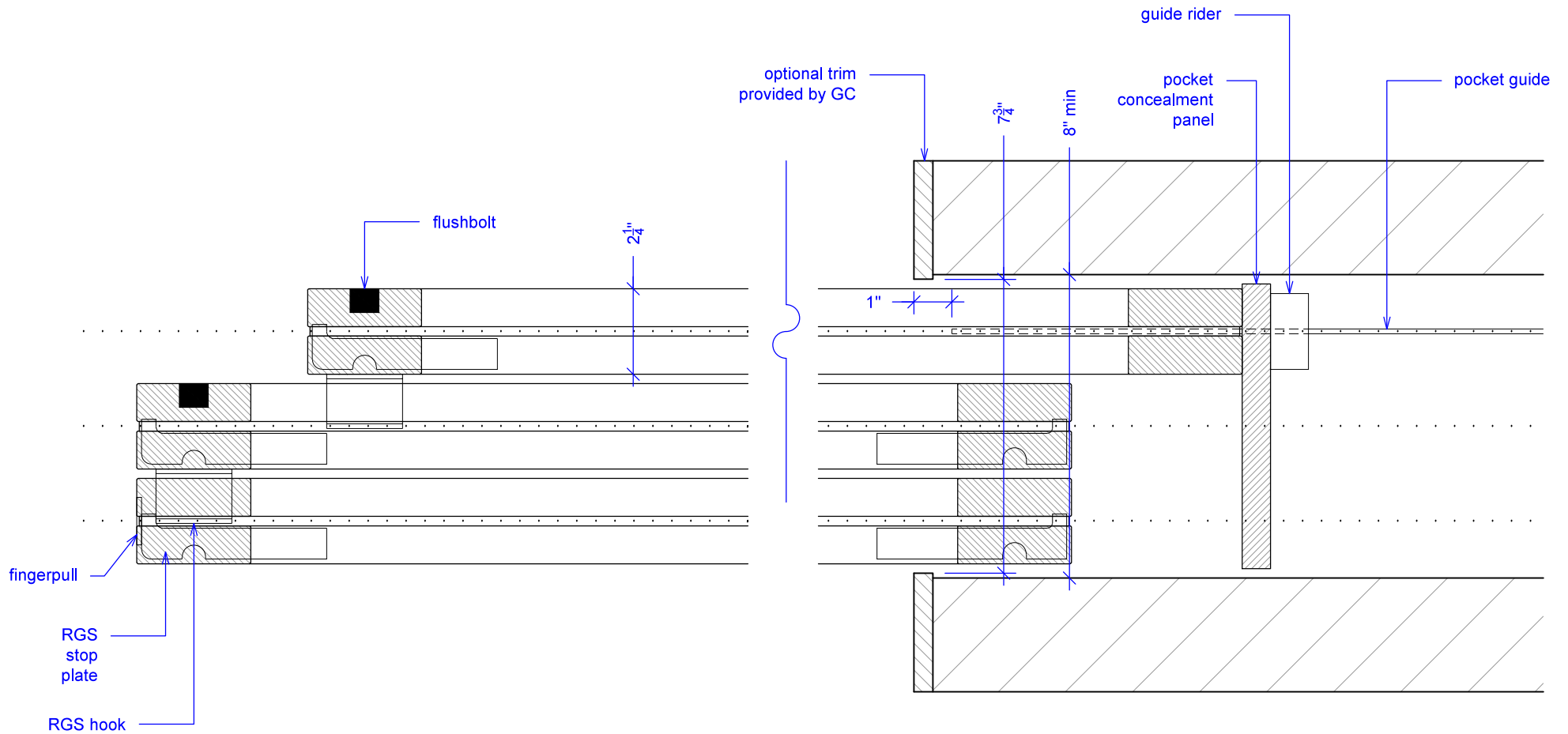
(SPW3-SC)

POCKET DETAIL

RAYDOOR STANDARD
SYSTEM DRAWINGS
©2020



NOTE: pocket depth should be 2"
deeper than width of doors



Guide rider is a block with a slit for the pocket guide; it allows for full extension, attach to bottom of concealment panel.

Sliding Pocket Wall w/ Soft-Close, 3 Panels

(SPW3-SC)

OPERATION OVERVIEW

RAYDOOR STANDARD
SYSTEM DRAWINGS
©2020

