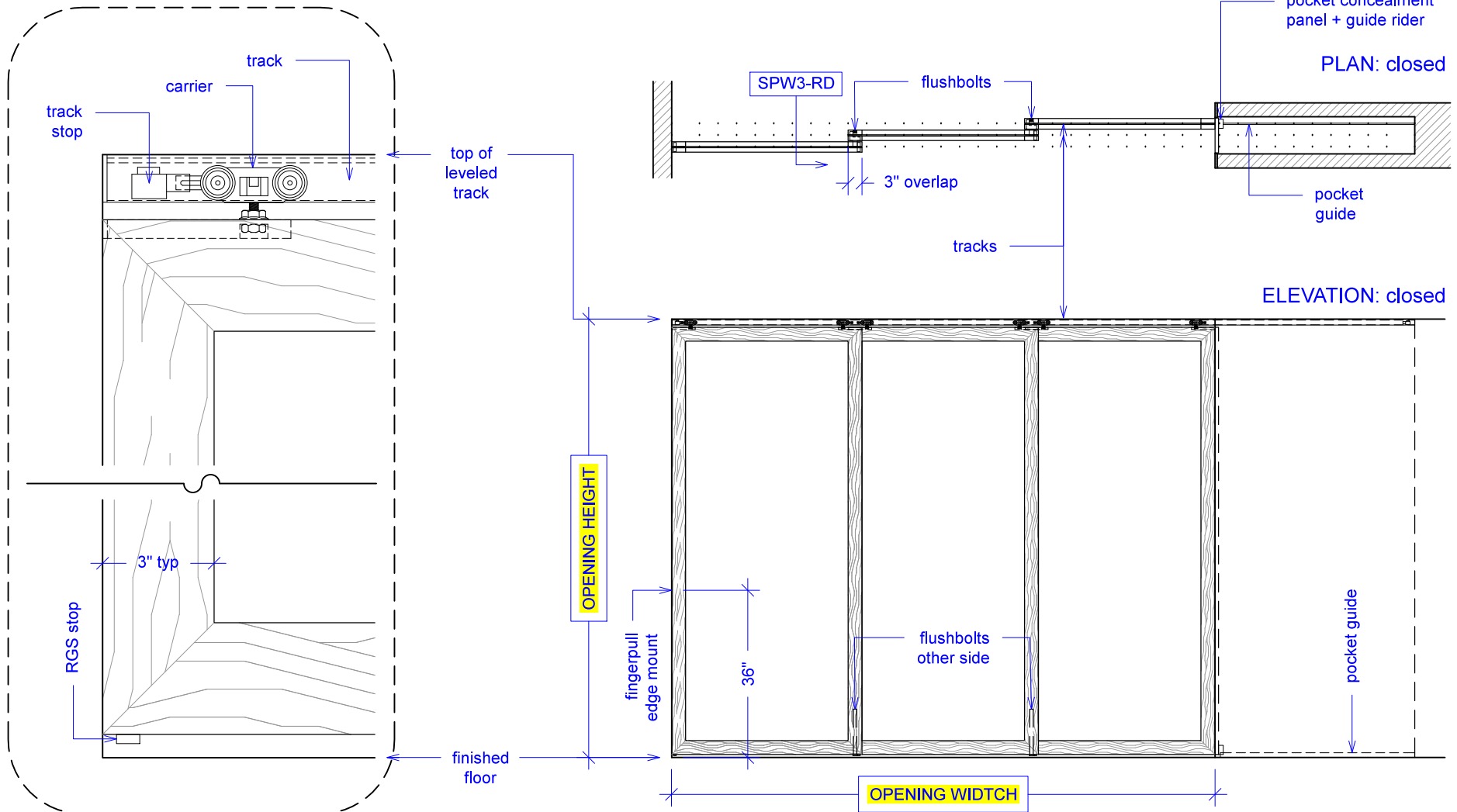
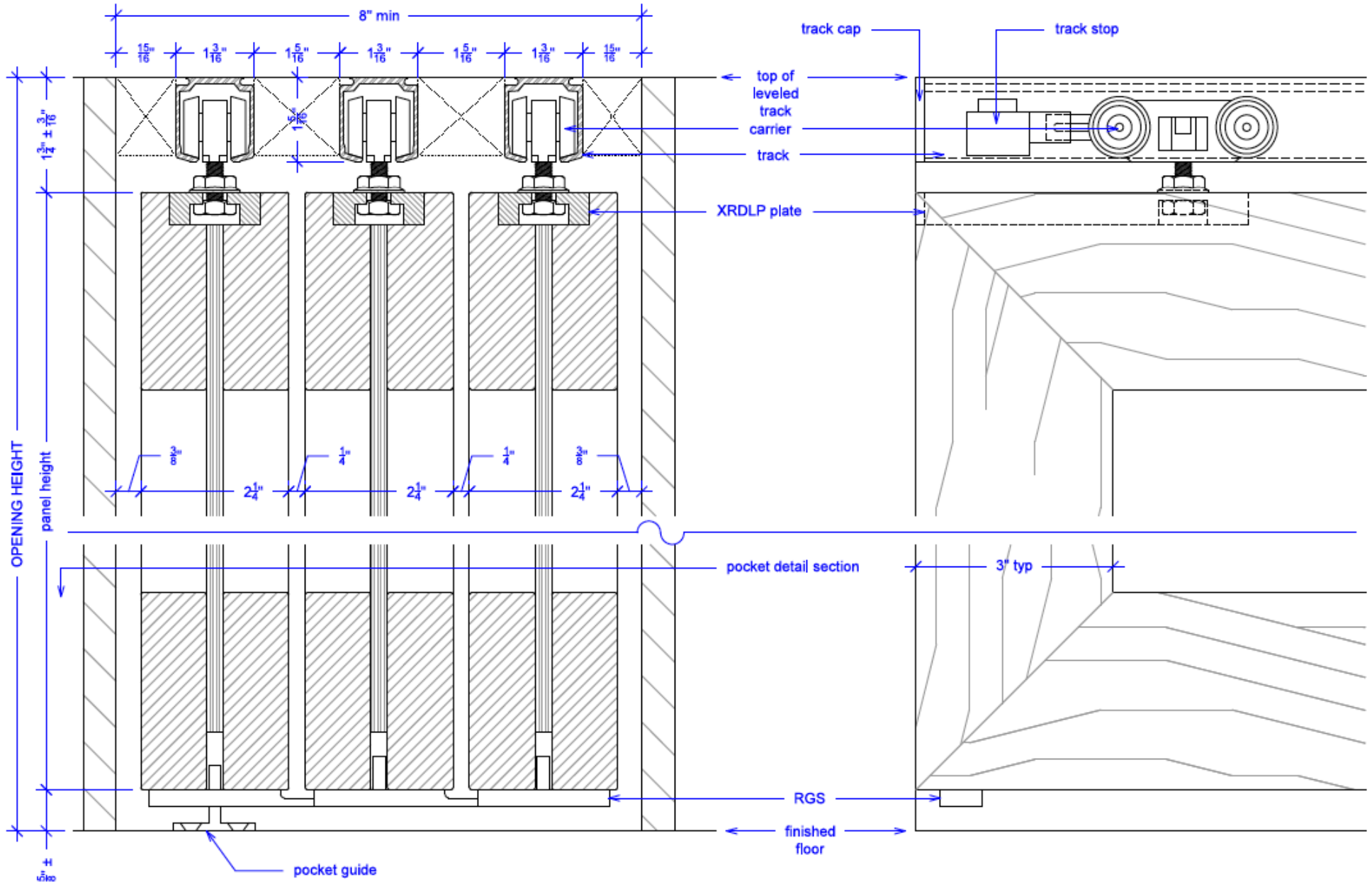




**YOUR OPENING HEIGHT = PANEL + 2-3/8"**  
**YOUR OPENING WIDTH = (PANEL x 3) - 6**



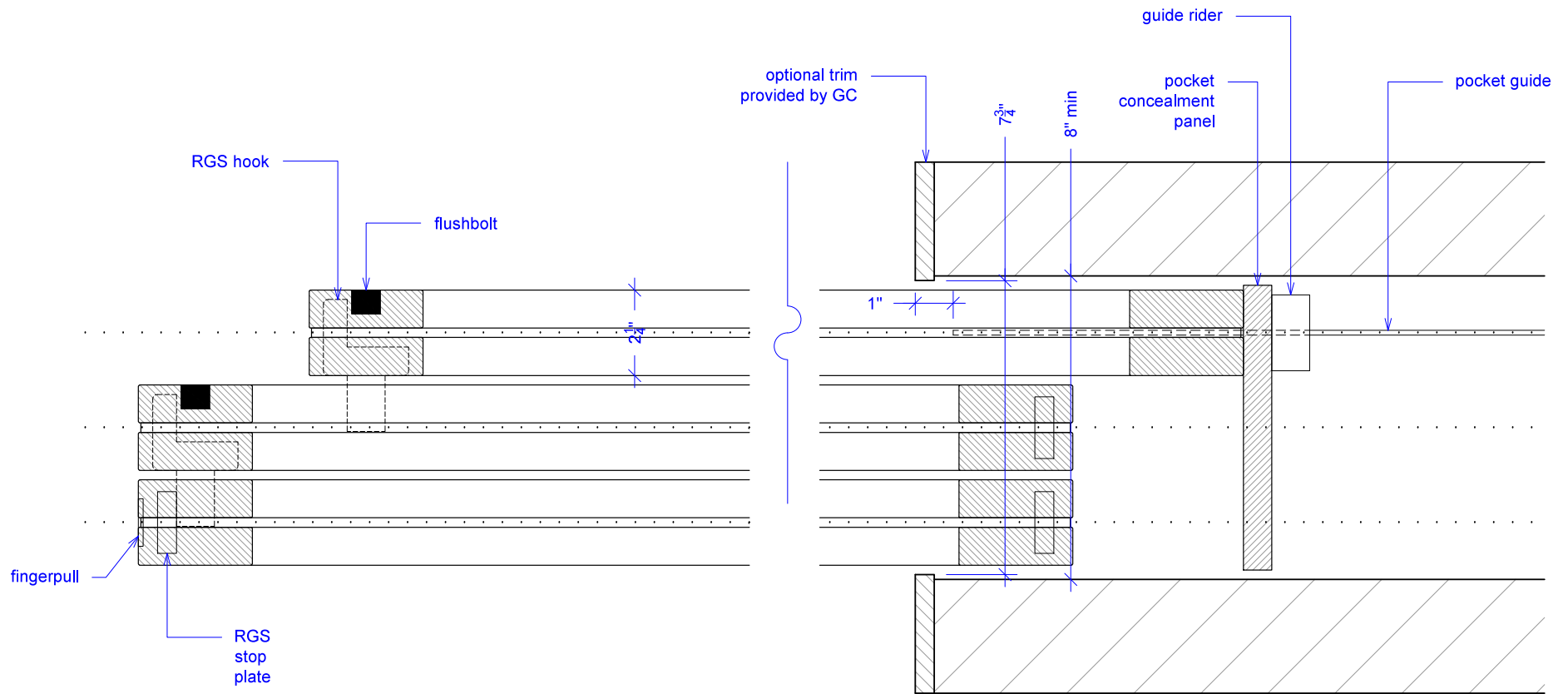
# SPW3 - 225





NOTE: each panel weights approximately 75-110 lbs.  
Secure tracks accordingly.

NOTE: pocket depth should be 2"  
deeper than width of doors



Guide rider is a block with a slit for the pocket guide; it allows for full extension, attach to bottom of concealment panel.

# SPW3 Operation Overview



NOTE: each panel weights approximately 75-110 lbs.  
Secure tracks accordingly.

