

# Sliding Pocket w/ Soft-Close, 2 Panels, Symmetrical

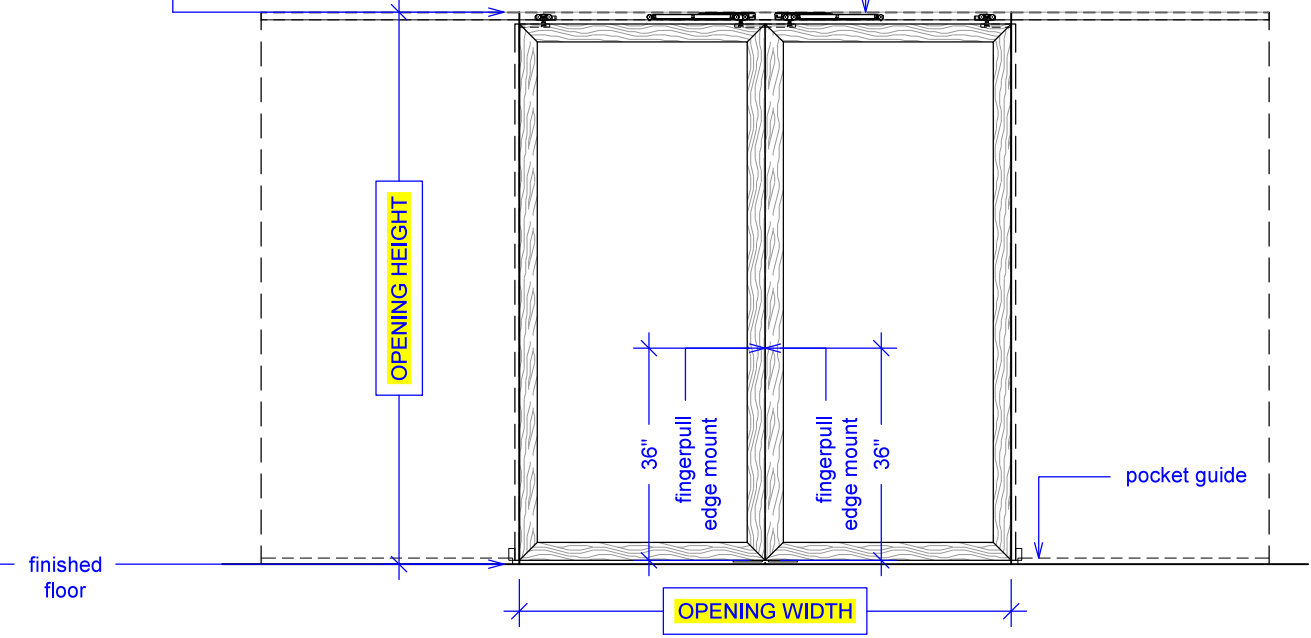
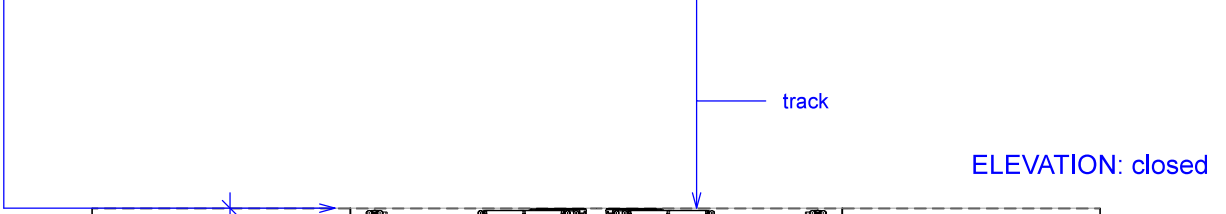
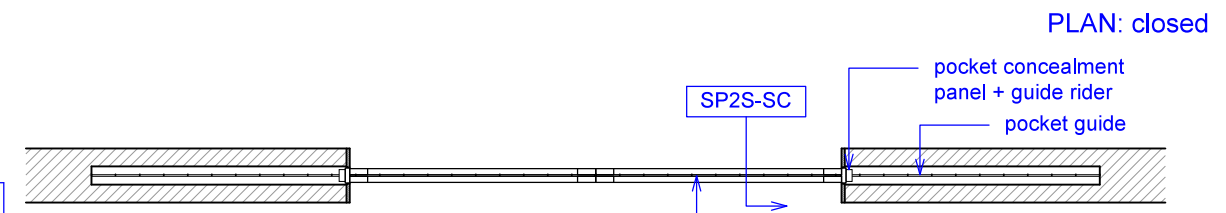
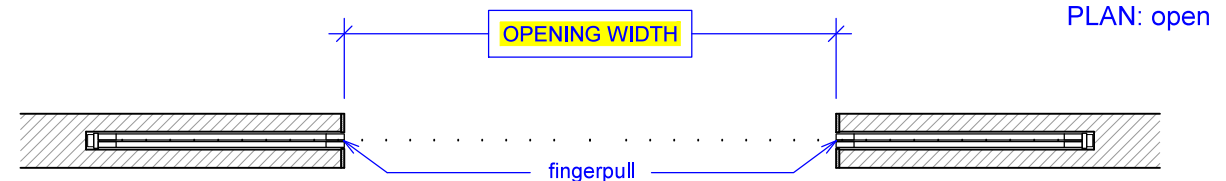
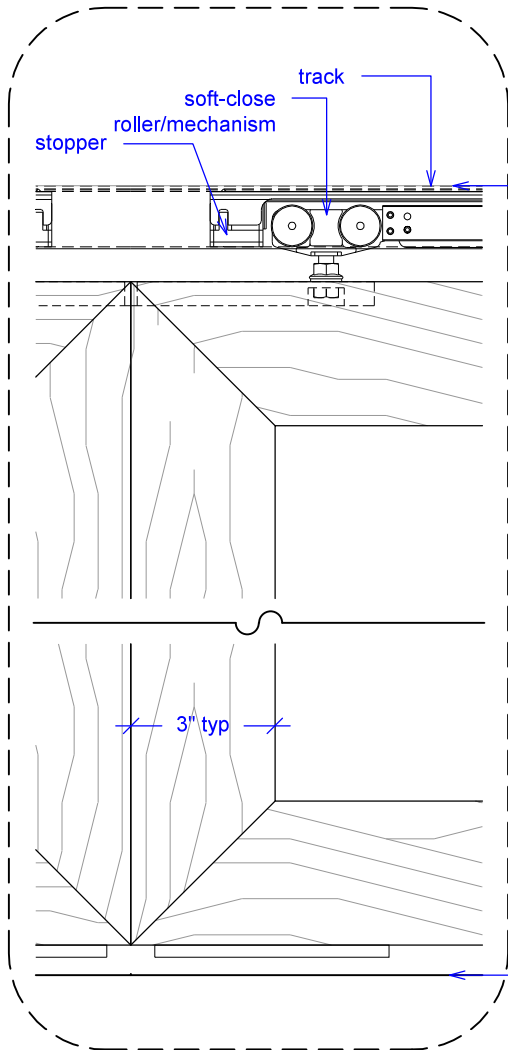
(SP2S-SC)

ELEVATION

RAYDOOR STANDARD  
SYSTEM DRAWINGS  
©2020



YOUR OPENING HEIGHT = PANEL + 2<sup>5</sup>/<sub>8</sub>"  
YOUR OPENING WIDTH = 2 x PANEL

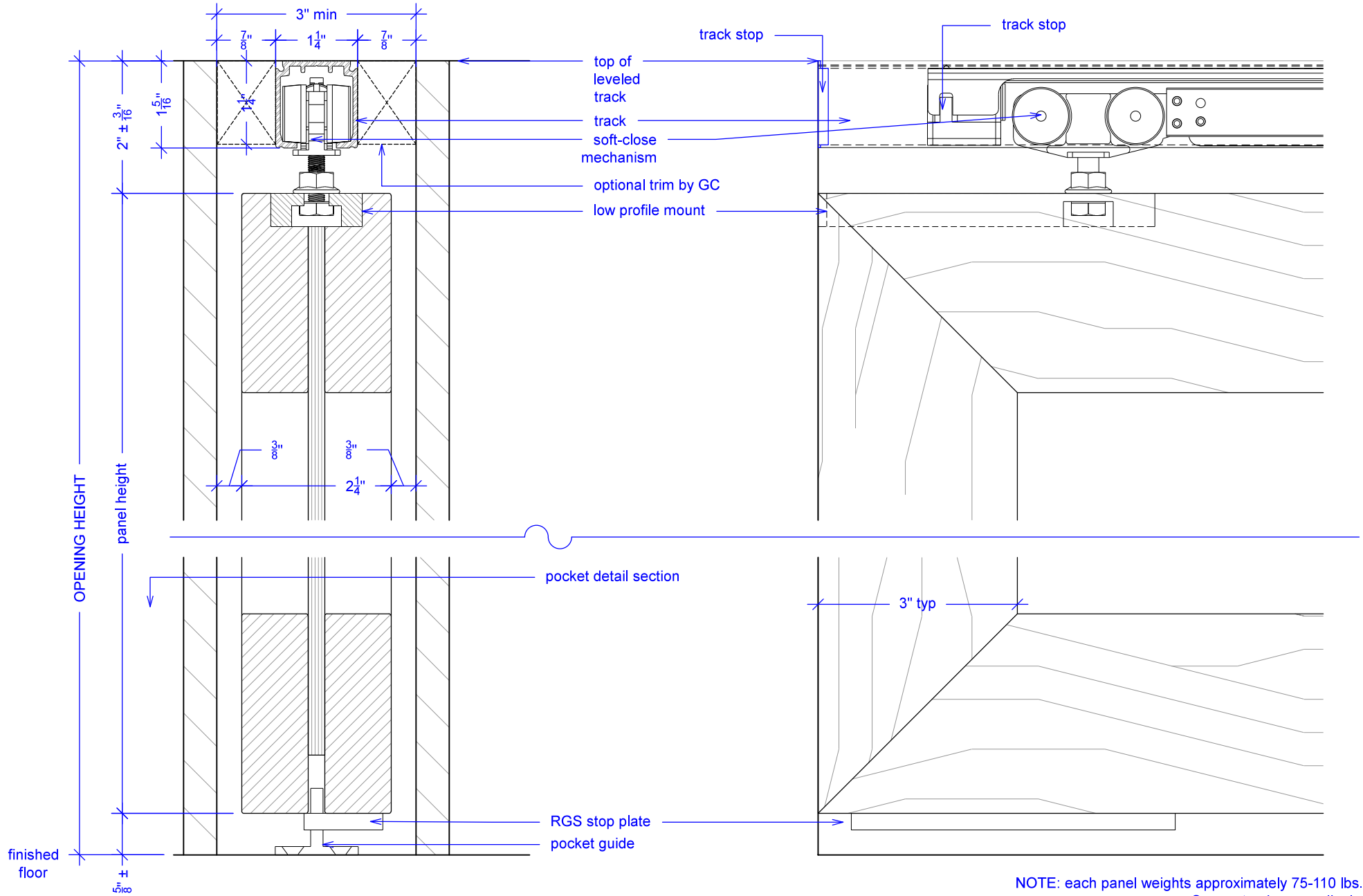


# Sliding Pocket w/ Soft-Close, 2 Panels, Symmetrical

(SP2S-SC)

SECTION

RAYDOOR STANDARD  
SYSTEM DRAWINGS  
©2020



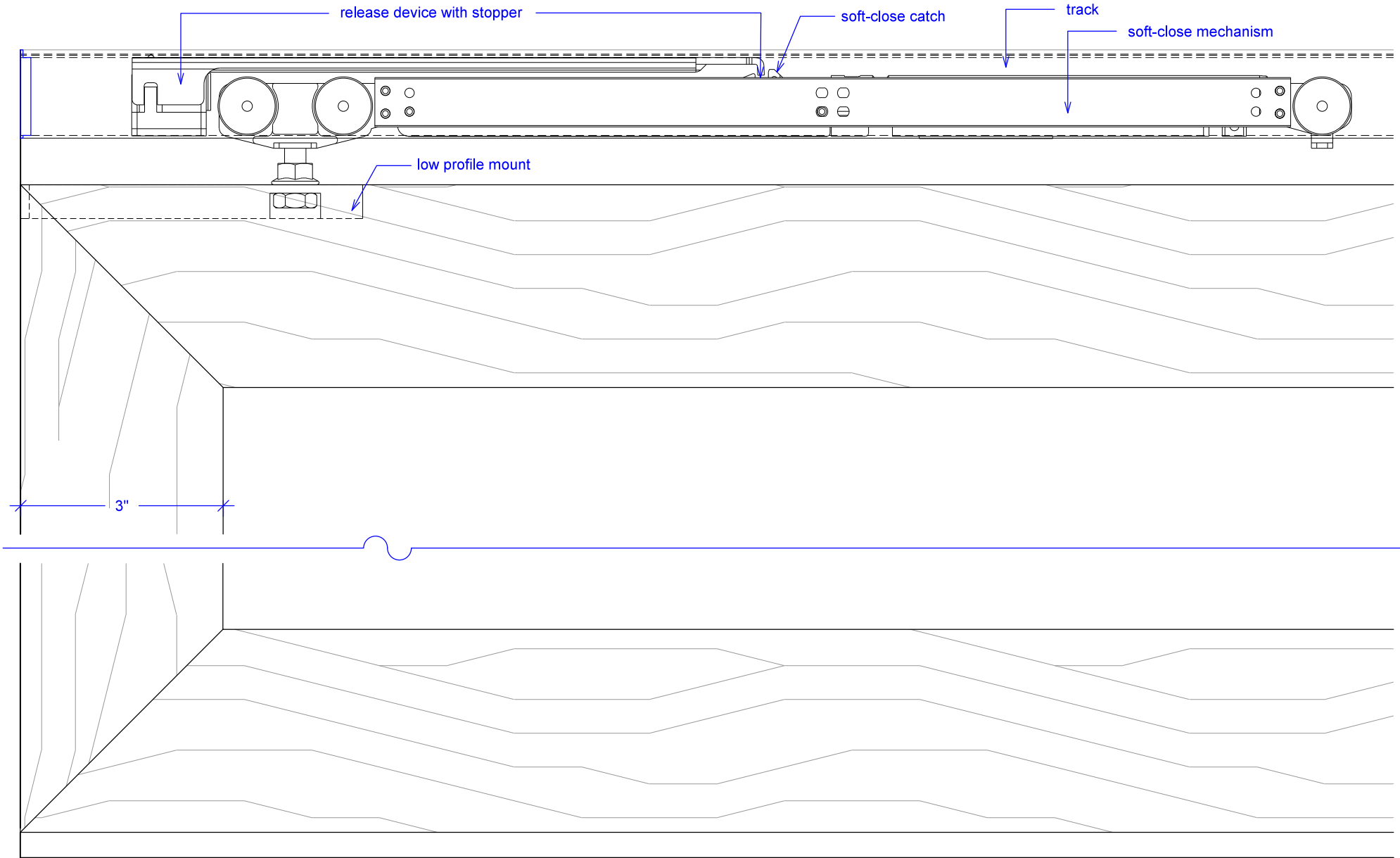
NOTE: each panel weights approximately 75-110 lbs.  
Secure tracks accordingly.

# Sliding Pocket w/ Soft-Close, 2 Panels, Symmetrical

(SP2S-SC)

## SOFT-CLOSE HARDWARE

RAYDOOR STANDARD  
SYSTEM DRAWINGS  
©2020

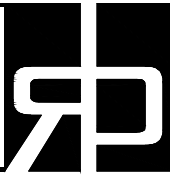


# Sliding Pocket w/ Soft-Close, 2 Panels, Symmetrical

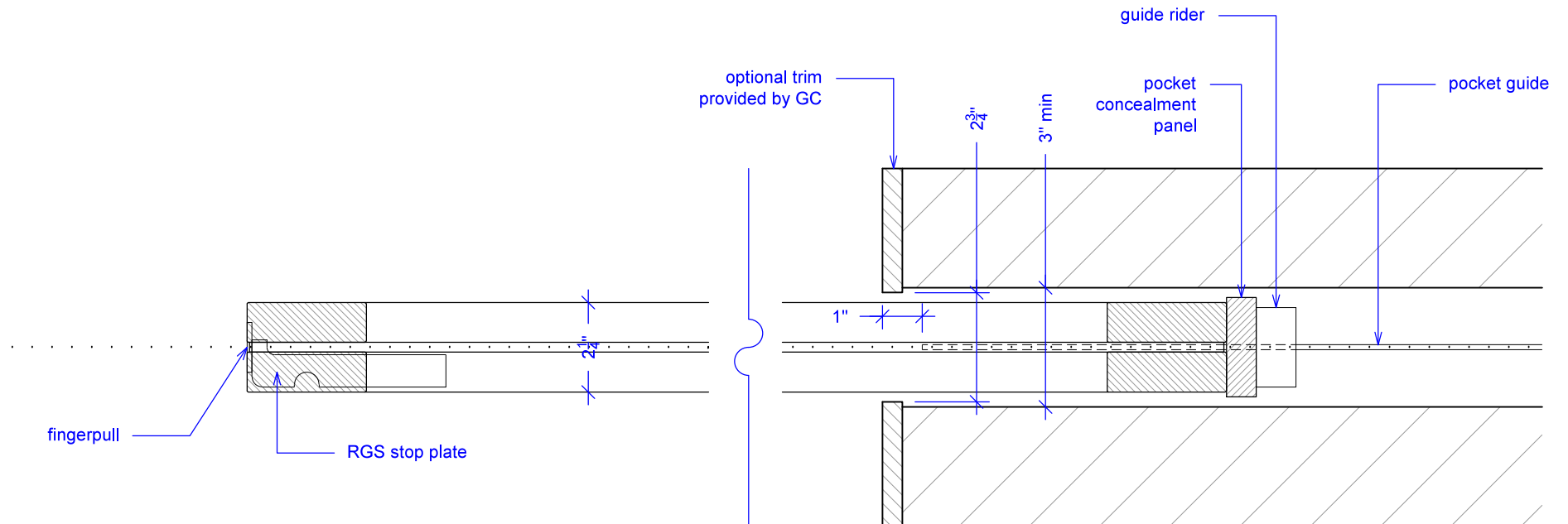
(SP2S-SC)

## POCKET DETAIL

RAYDOOR STANDARD  
SYSTEM DRAWINGS  
©2020



NOTE: pocket depth should be 2"  
deeper than width of doors



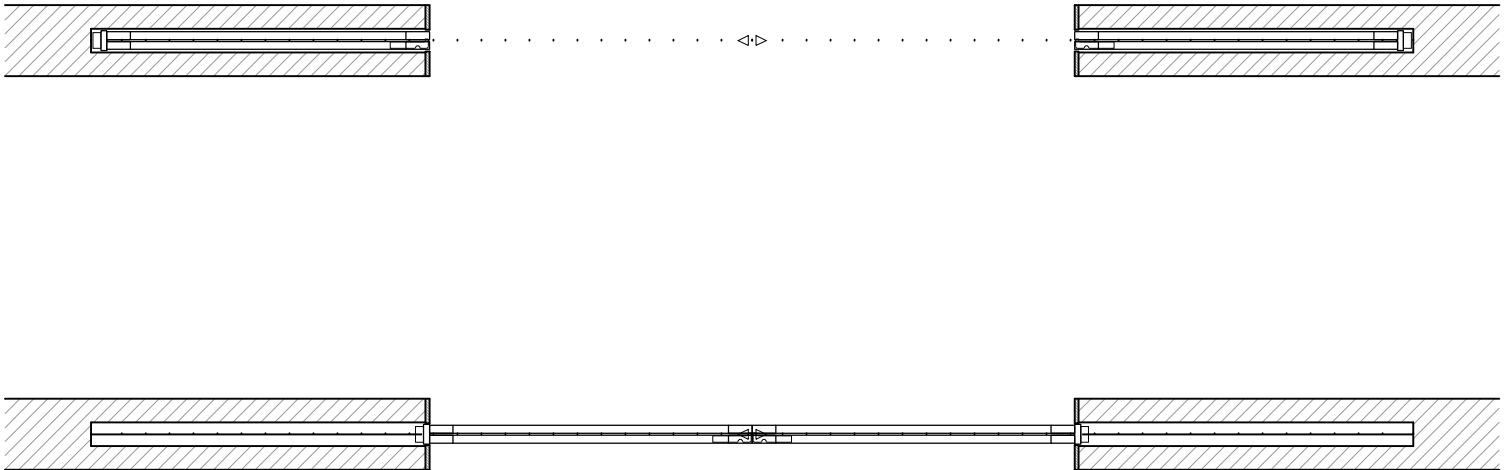
Guide rider is a block with a slit for the pocket guide; it allows for full extension, attach to bottom of concealment panel.

# Sliding Pocket w/ Soft-Close, 2 Panels, Symmetrical




(SP2S-SC)

## OPERATION OVERVIEW

RAYDOOR STANDARD  
SYSTEM DRAWINGS  
©2020



KEY:

 RGS stop	 pocket guide	 stopper/release device
--	--	--