

# Sliding Bypass w/ Soft-Close, 5 Panels

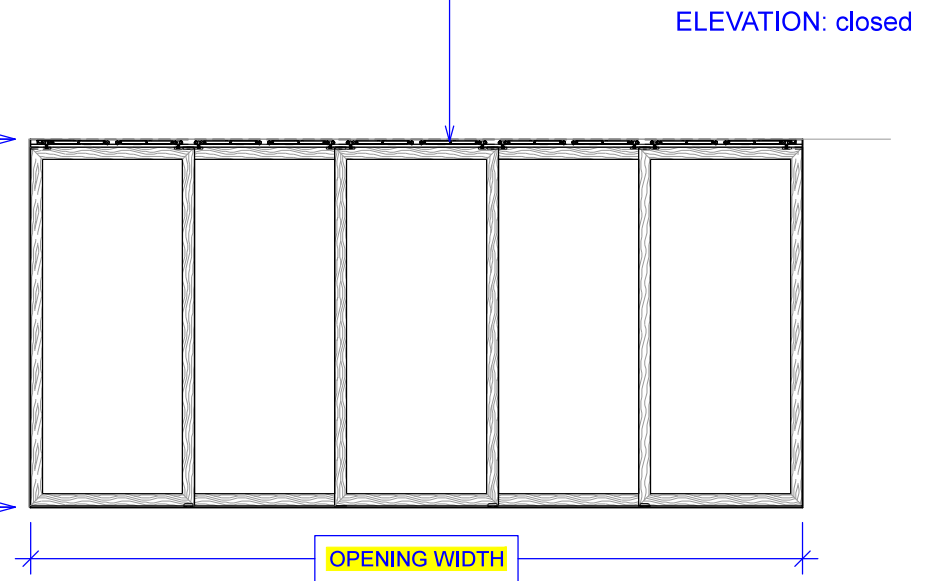
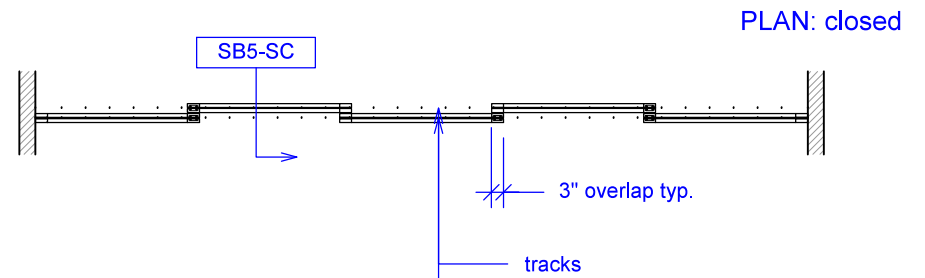
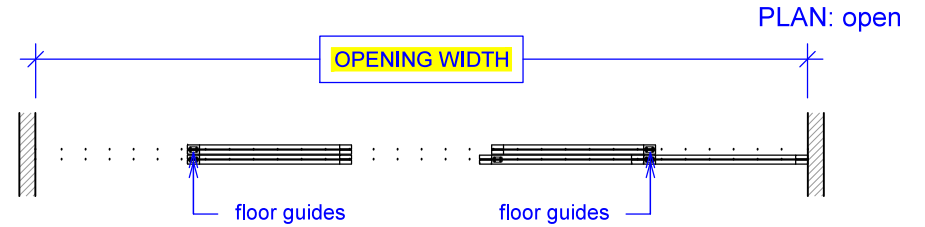
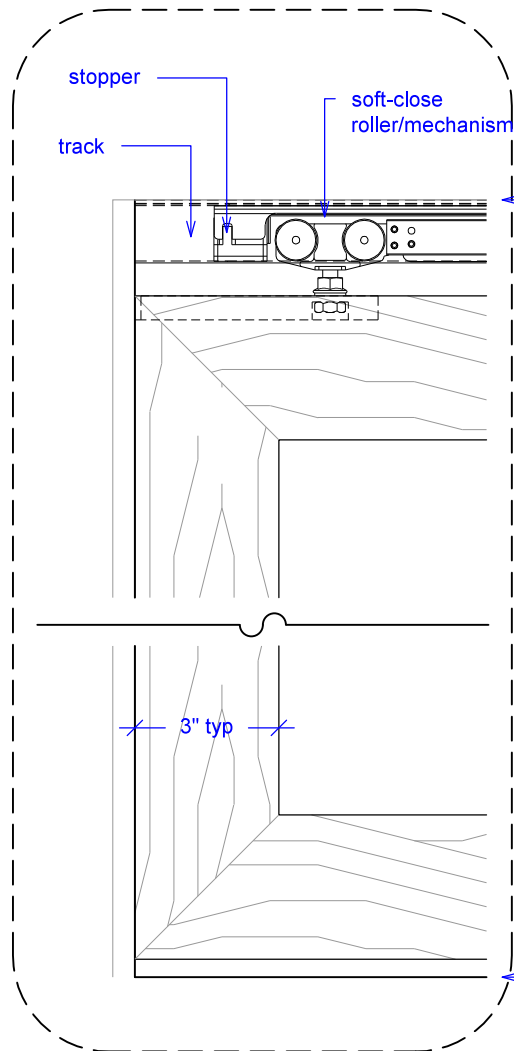
(SB5-SC)

ELEVATION

RAYDOOR STANDARD  
SYSTEM DRAWINGS  
©2020



YOUR OPENING HEIGHT = PANEL + 2<sup>3</sup>/<sub>8</sub>"  
YOUR OPENING WIDTH = (5 x PANEL) - 12"

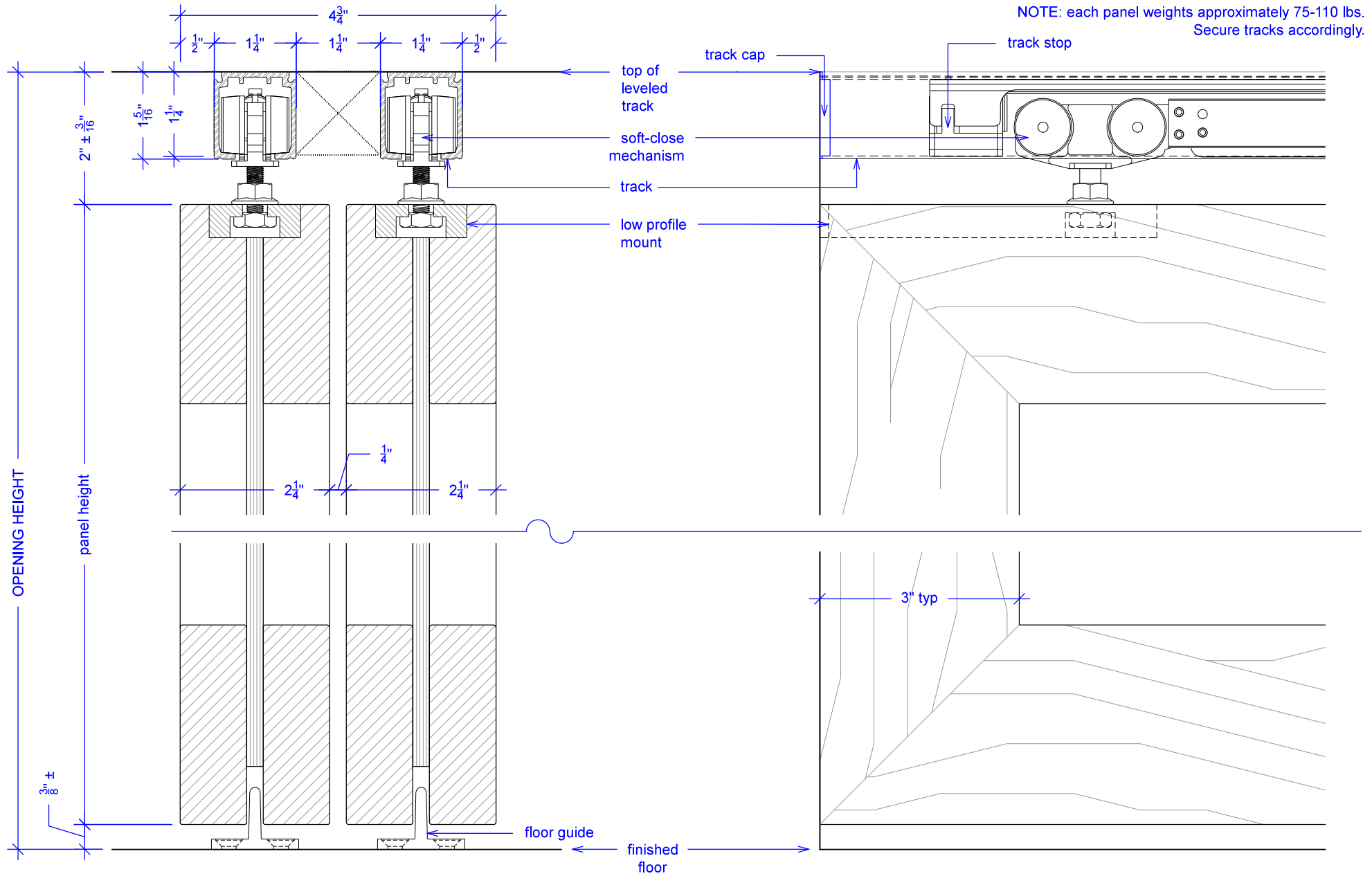


# Sliding Bypass w/ Soft-Close, 5 Panels

(SB5-SC)

SECTION

RAYDOOR STANDARD  
SYSTEM DRAWINGS  
©2020

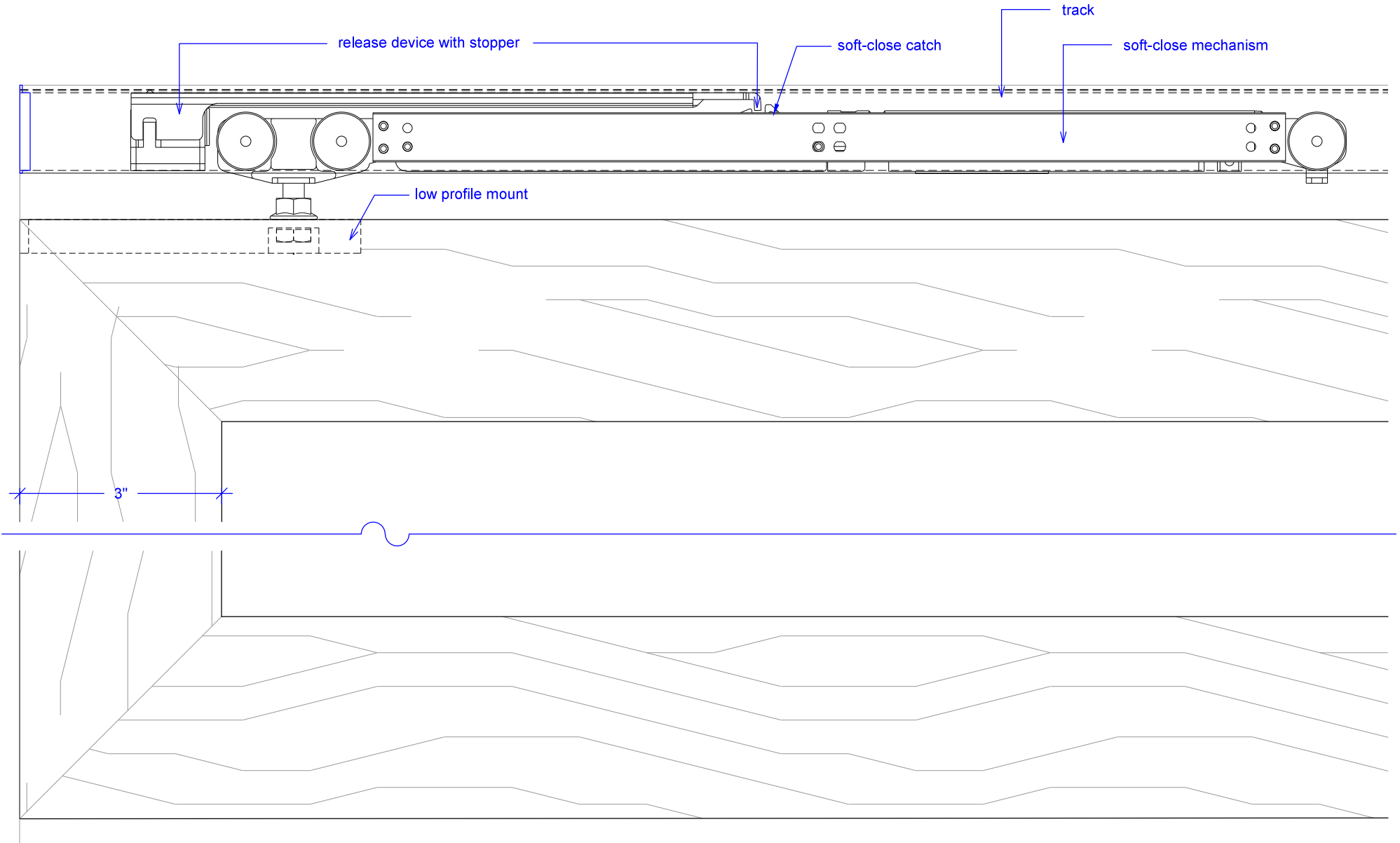


# Sliding Bypass w/ Soft-Close, 5 Panels

(SB5-SC)

## SOFT-CLOSE HARDWARE

RAYDOOR STANDARD  
SYSTEM DRAWINGS  
©2020

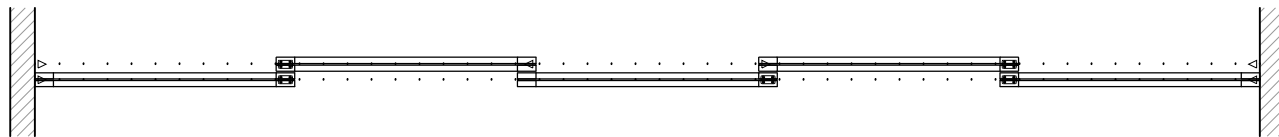
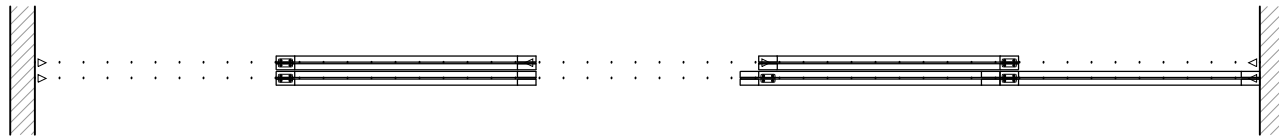
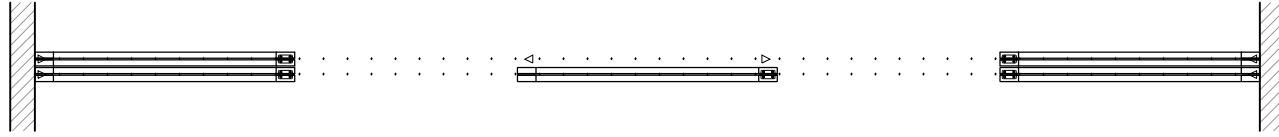


# Sliding Bypass w/ Soft-Close, 5 Panels

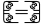

(SB5-SC)

## OPERATION OVERVIEW

RAYDOOR STANDARD  
SYSTEM DRAWINGS  
©2020



KEY:

 floor guide       Stopper / release device