

Sliding Bypass w/ Soft-Close, 4 Panels, Symmetrical

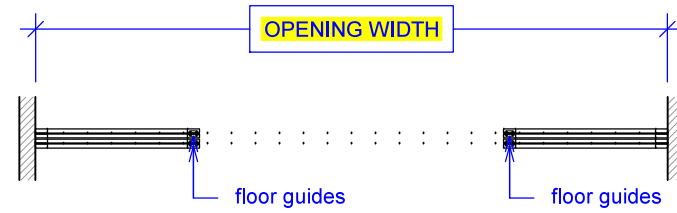
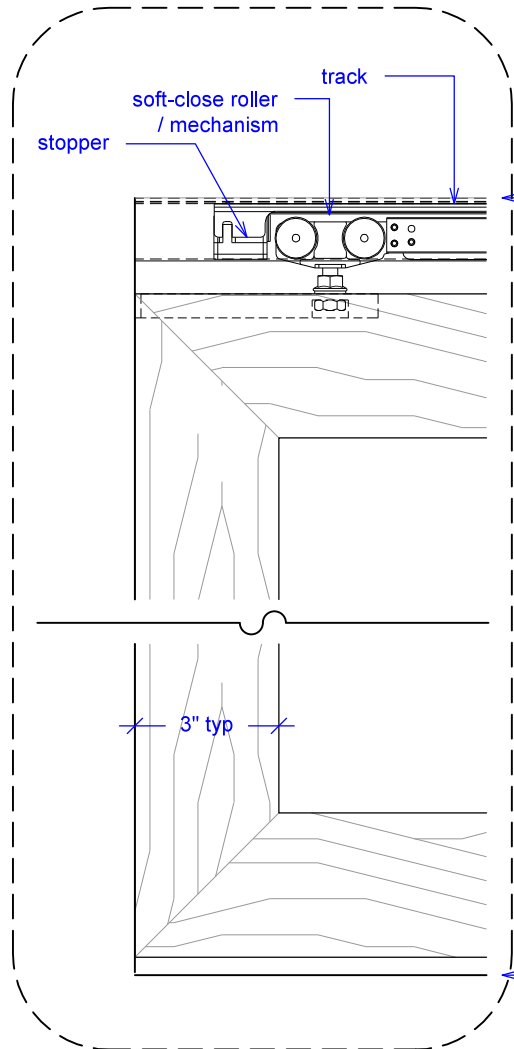
(SB4S-SC)

ELEVATION

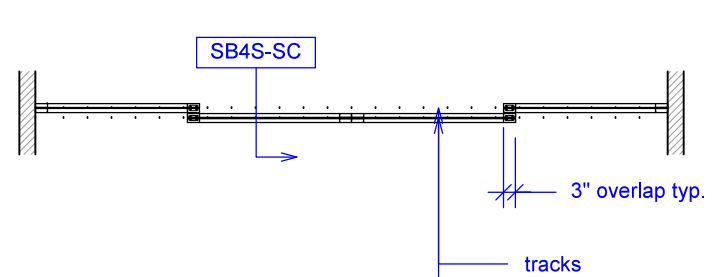
RAYDOOR STANDARD
SYSTEM DRAWINGS
©2020



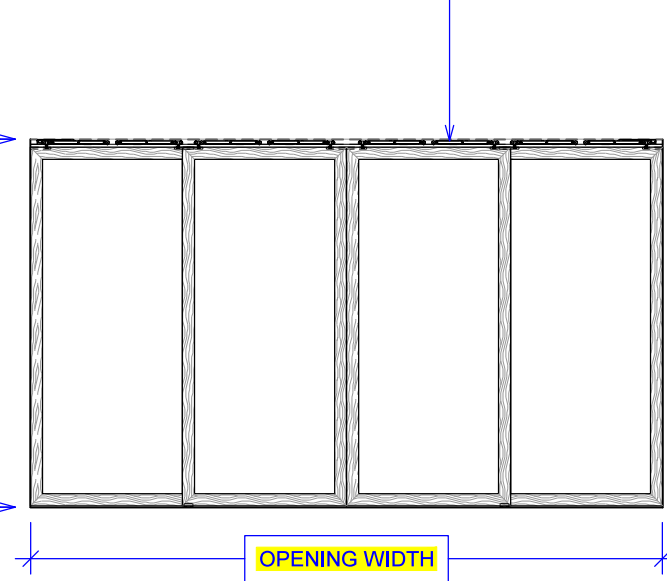
YOUR OPENING HEIGHT = PANEL + 2³/₈"
YOUR OPENING WIDTH = (4 x PANEL) - 6"



PLAN: open



PLAN: closed



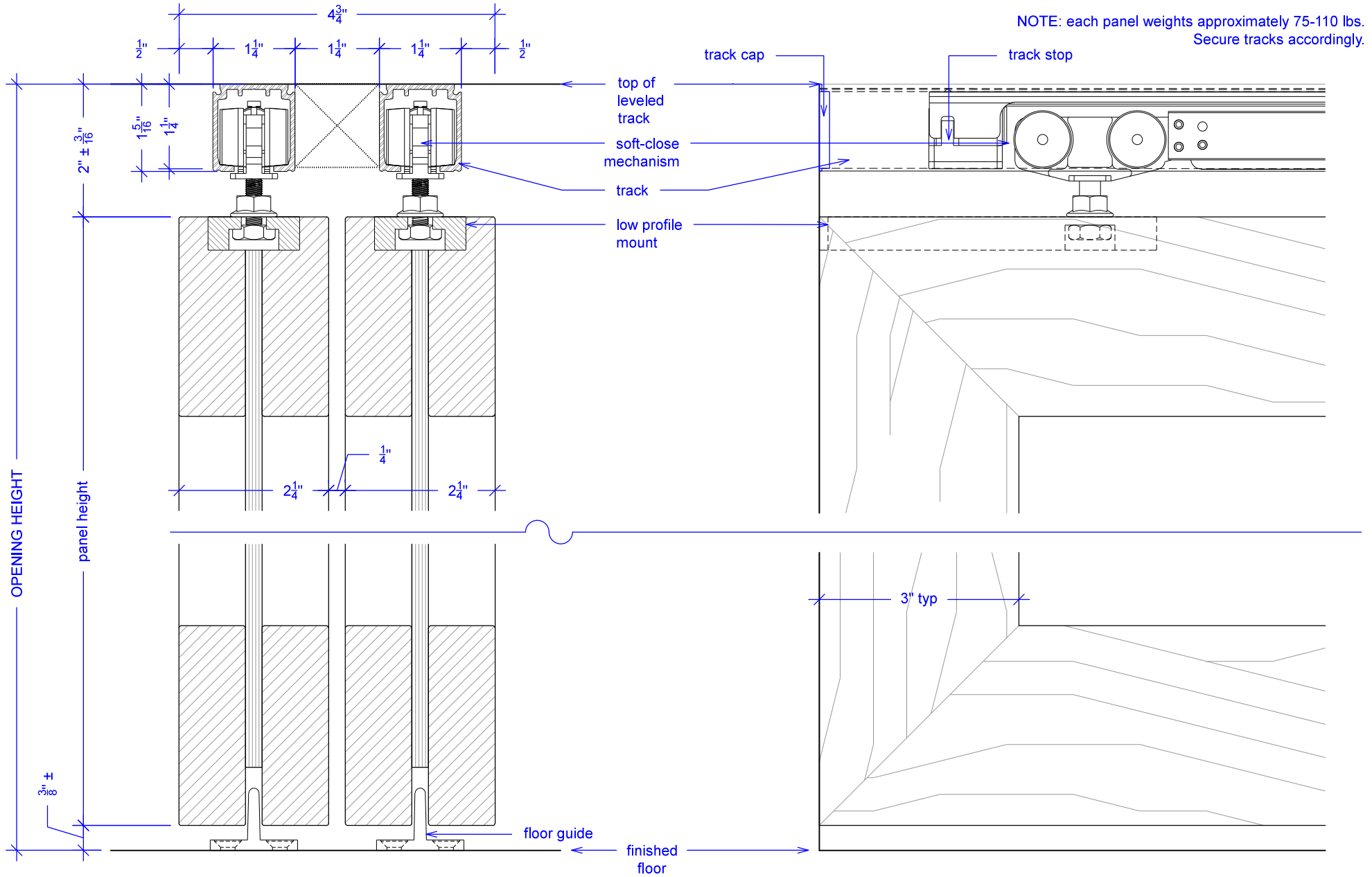
ELEVATION: closed

Sliding Bypass w/ Soft-Close, 4 Panels, Symmetrical

(SB4S-SC)

SECTION

RAYDOOR STANDARD
SYSTEM DRAWINGS
©2020

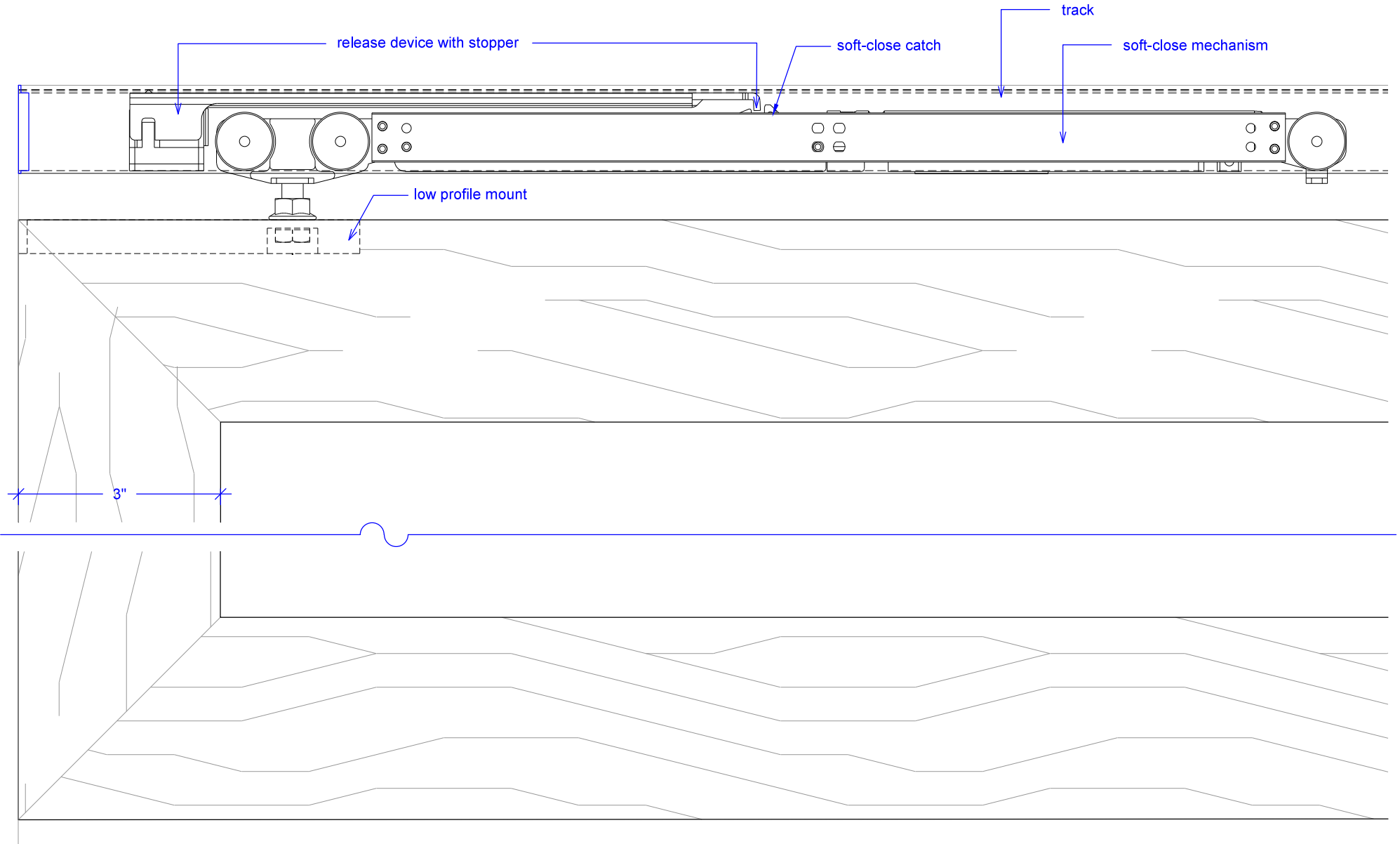


Sliding Bypass w/ Soft-Close, 4 Panels, Symmetrical

(SB4S-SC)

SOFT-CLOSE HARDWARE

RAYDOOR STANDARD
SYSTEM DRAWINGS
©2020

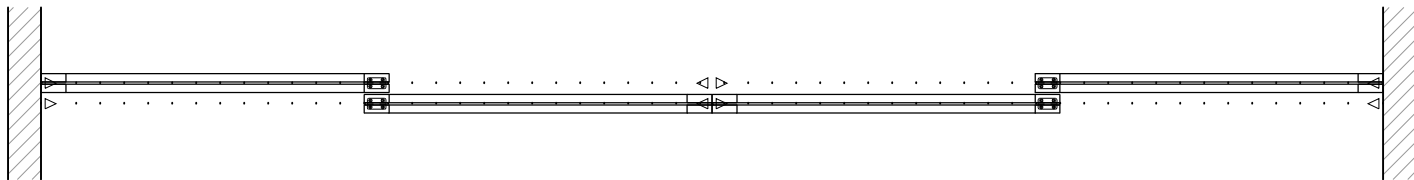
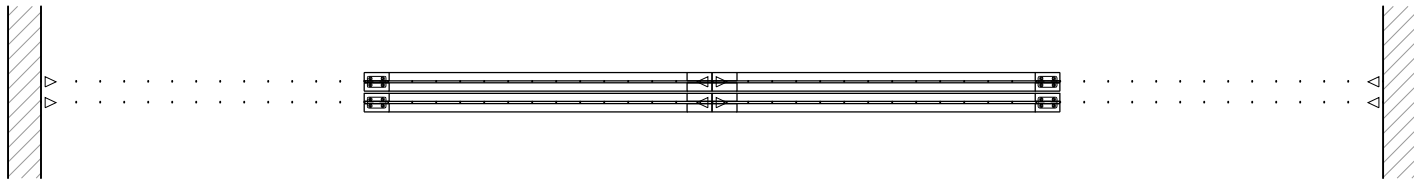
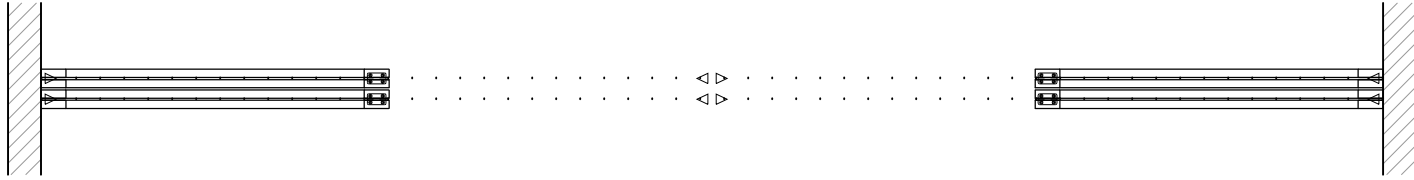


Sliding Bypass w/ Soft-Close, 4 Panels, Symmetrical

(SB4S-SC)

OPERATION OVERVIEW

RAYDOOR STANDARD
SYSTEM DRAWINGS
©2020



KEY:



floor guide



Stopper / release device