

Sliding Bypass w/ Soft-Close, 3 Panels

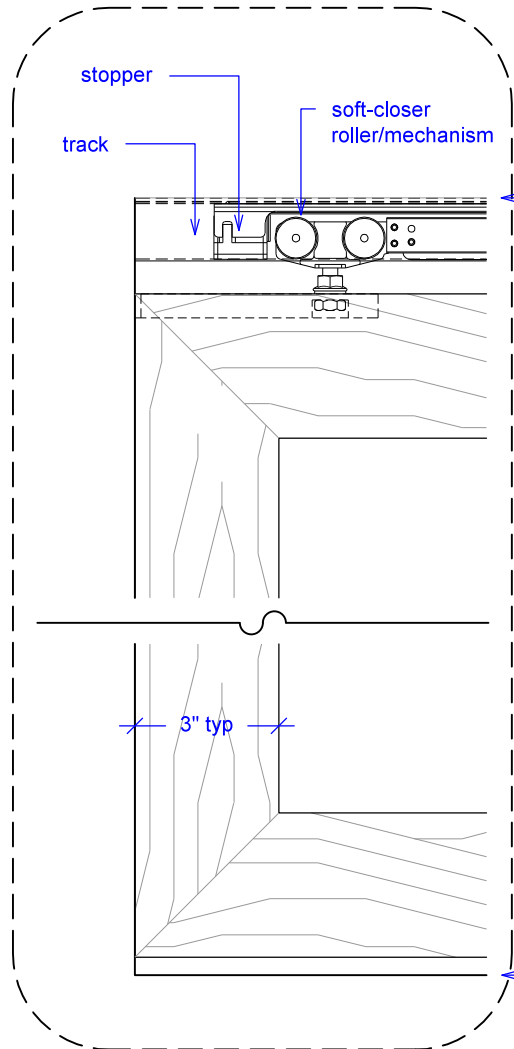
(SB3-SC)

ELEVATION

RAYDOOR STANDARD
SYSTEM DRAWINGS
©2020



YOUR OPENING HEIGHT = PANEL + 2³/₈"
YOUR OPENING WIDTH = (3 x PANEL) - 6"



top of leveled track

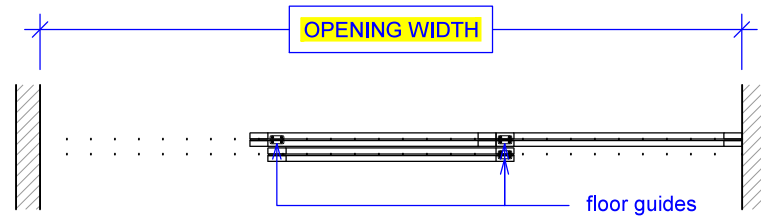
stopper

soft-closer roller/mechanism

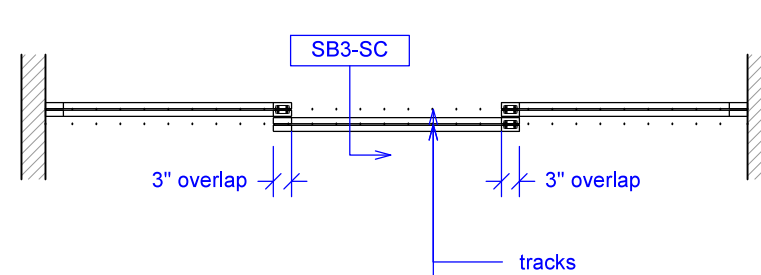
track

3" typ

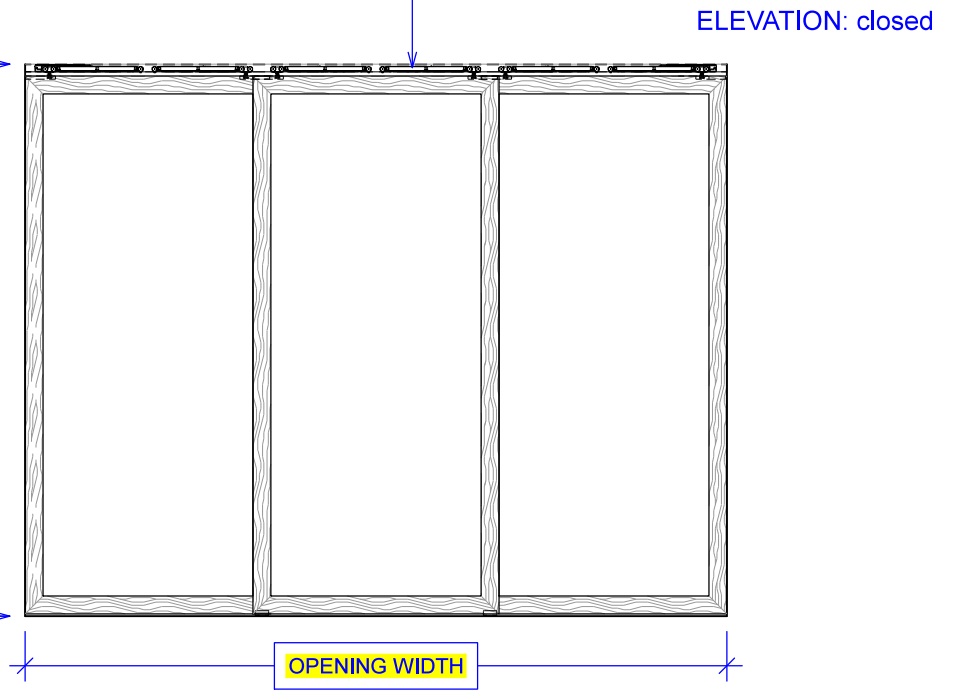
finished floor



PLAN: open



PLAN: closed



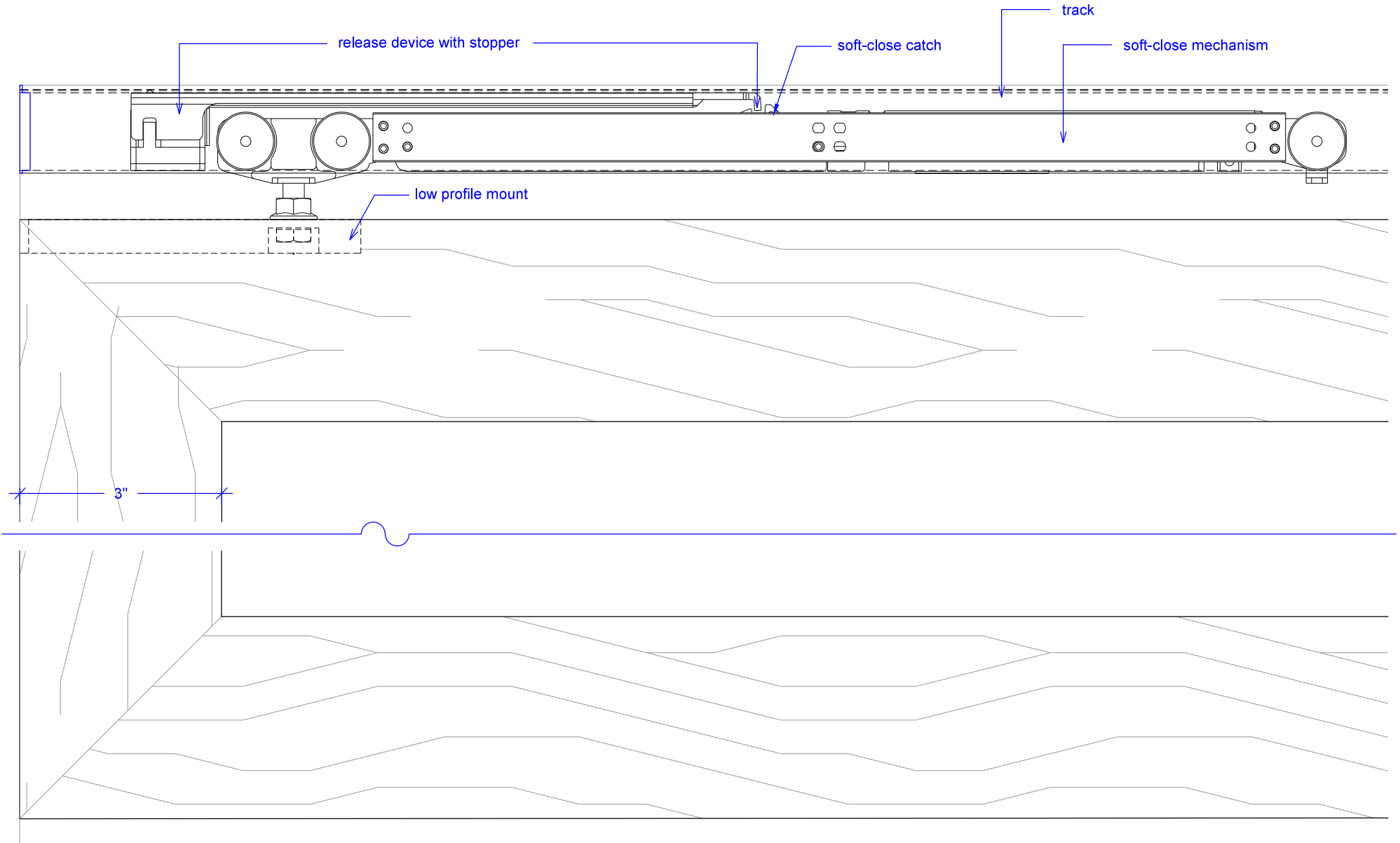
ELEVATION: closed

Sliding Bypass w/ Soft-Close, 3 Panels

(SB3-SC)

SOFT-CLOSE HARDWARE

RAYDOOR STANDARD
SYSTEM DRAWINGS
©2020

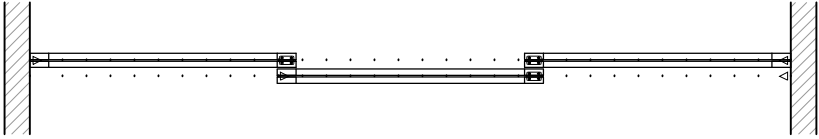
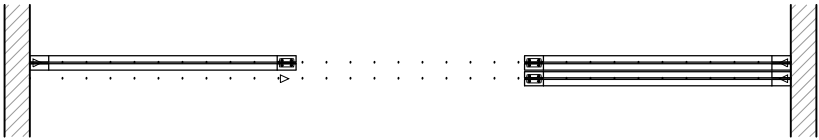


Sliding Bypass w/ Soft-Close, 3 Panels

(SB3-SC)

OPERATION OVERVIEW

RAYDOOR STANDARD
SYSTEM DRAWINGS
©2020



KEY:

 floor guide	 stopper/release device
---	--